

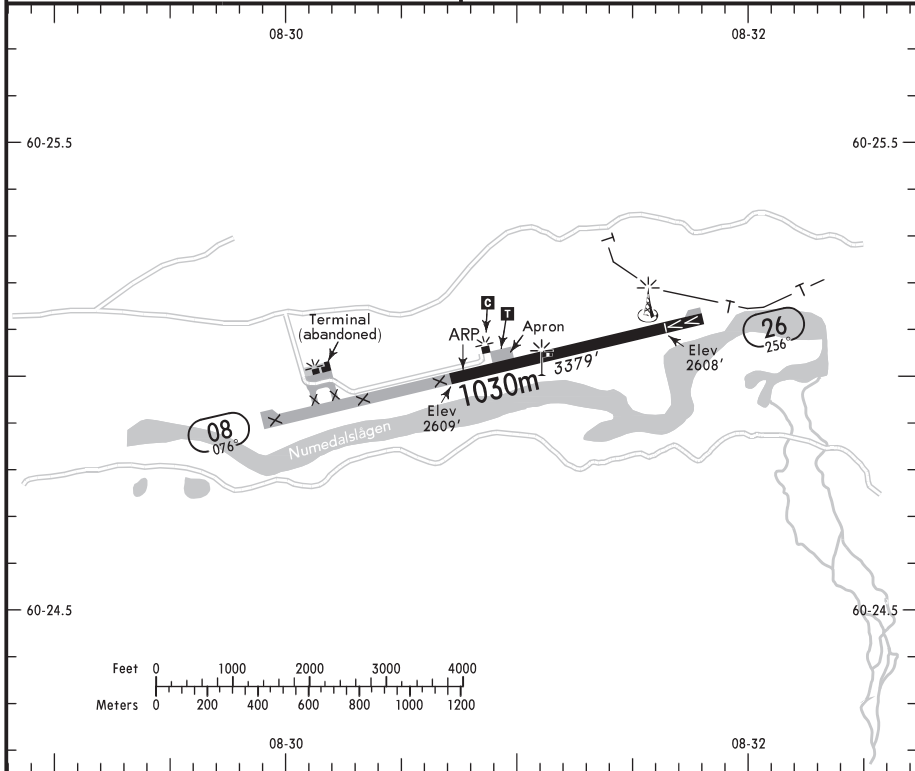
GEILO
DAGALI
NORWAY

19-2 26 NOV 10



(FIS)

OSLO CONTROL **120.37**



TAXI

WDI - OBSTL.

| RWY No | Dimension (m) - Surface | TORA (m) | LDA (m) | Strength | Lights |
|----------|-------------------------|----------|---------|----------------|--------|
| 08 26 | 1030 x 45 Asphalt | 1000 | 850 | PCN 40/F/B/X/U | — |

AD is PPR.

CAUTION:
 Elk & other wildlife may occur on AD.

RH circuit RWY 08.

Holding 1 NM S of AD at 4500'.

No regular snow/ice removal.