

A NEW VISION OF HOME AND COMMUNITY



OSPREY VILLAGE
a cohousing community



OSPREY VILLAGE COMMUNITY INFORMATION

WHO WE ARE

OUR GROUP WAS FORMED JULY OF 2012 BECAUSE WE SAW A NEED FOR SUPPORT AND STRUCTURE FOR ADULTS WITH AUTISM BEYOND THE STATE PROVIDED TRAINING THAT ENDS AT AGE 22. WHAT WE NOTICED AS WE MET AND TALKED IS THAT THERE IS AN UNADDRESSED HOPELESSNESS OFTEN EXPRESSED AS "WHERE WILL THE MONEY COME FROM". THE STATE IS COMPLICATED AND UNDEPENDABLE AS ARE GRANTS AND GIFTS. THIS THINKING SHADES ALL DISCUSSION MAKING IT DIFFICULT TO MOVE FORWARD. SO NATURALLY THE QUESTION ARISES, WHAT TO DO?

WE HAVE REALIZED THAT WE DON'T NEED TO LOOK FOR ADDITIONAL MONEY FOR HOUSING, TRAINING, TRANSPORTATION ETC. WE ALREADY SPEND THE MONEY IT IS JUST THAT WE ARE ALL PROVIDING IT INDIVIDUALLY. WE NEED TO ORGANIZE OURSELVES AND WORK TOGETHER TO CREATE A COMMUNITY THAT IS INTEGRATED AND SUPPORTIVE. BY POOLING OUR RESOURCES WE WILL ACTUALLY BE ABLE TO LIVE BETTER FOR LESS. THIS IS ALL WITHIN OUR GRASP.

WE JUST HAVE TO REALIZE OUR SHARED NEED AND THAT WE CAN GREATLY BENEFIT FROM COOPERATION.

OUR VISION

CREATE A SAFE, ECO-FRIENDLY COHOUSING COMMUNITY WITH AN EXTENDED FAMILY ATMOSPHERE. THIS COMMUNITY WILL PROVIDE WORK, RECREATION, EDUCATION AND TRAINING FOR INDIVIDUALS WITH AUTISM AND OTHER DISABILITIES. OUR STRATEGIC PLAN INCLUDES LONG-TERM CARE FOR OURSELVES AND FOR OUR LOVED ONES WHEN WE ARE NO LONGER ABLE.

OUR PLAN

WHAT WE ARE TALKING ABOUT IS NOT AN INSTITUTION OR GROUP HOME BUT A COHOUSING COMMUNITY WHERE WE LIVE ALONG WITH OUR YOUNG ADULTS. WE DECIDE HOW IT IS BUILT AND WHAT SERVICES ARE PROVIDED.

>> WE ARE DISCUSSING LIVING ARRANGEMENTS AND FINANCIAL STRUCTURES THAT WILL ASSURE CARE AND A SUPPORTIVE COMMUNITY FOR OUR LOVED ONES WHEN WE ARE GONE.

>> WE ARE DESIGNING LOTS OF VARIATION IN HOUSING TO SUIT DIFFERENT ABILITIES AND DESIRES FOR INDEPENDENCE.

>> OUR COMMUNITY CENTER WILL SERVE MANY FUNCTIONS FROM VOCATIONAL TRAINING AND SOCIAL EVENTS TO COMMUNITY DINNERS AND MEETINGS WITH CRAFT ROOMS, MUSIC ROOMS, CLASSROOMS, WORKSHOPS AND MORE.

>> THERE IS POWER IN OUR NUMBERS. OUR GROUP OF COMMITTED BUYERS IS AN ASSET FOR A BUILDER WHO IS WILLING TO ADDRESS THE NEEDS OF AN EVER GROWING POPULATION OF PEOPLE WITH DISABILITIES

>> WITH CONCERNED PARENTS INVOLVED IN AN INTEGRATED COMMUNITY, PREDATION IS NO LONGER A CONCERN FOR US. LIVING IN COMMUNITY TRANSPORTATION BECOMES A MUCH LESS DAUNTING PROBLEM AND WE ARE DISCUSSING WITH OUTSIDE PROVIDERS TO LOCATE TRAINING IN OUR COMMON SPACE.

>> WE HAVE AN OPPORTUNITY TO DISCUSS AND LIVE SHARED VALUES SUCH AS A DESIRE FOR HEALTHY, SUSTAINABLE LIVING, ORGANIC GARDENING, LOW IMPACT 'GREEN BUILDING' AND MUCH MORE. WHAT DO YOU SEE AS POSSIBLE?

WHAT DOES COMMUNITY MEAN?

WE CAN CREATE THE SORT OF COMMUNITY WHERE WE KNOW AND TRUST OUR NEIGHBORS THROUGH MUCH SHARED WORK AND AGREEMENTS. THIS ENVIRONMENT CREATES OPPORTUNITIES FOR US TO SHARE RESPONSIBILITIES. SINCE WE ALL WILL LIVE LOCALLY WE CAN BE THERE FOR ONE ANOTHER AND SUPPORT EACH OTHER IN DAY TO DAY MATTERS. OUR FRIENDS AND COMPANIONS ARE RIGHT NEXT DOOR. THIS IS NOT A PIPEDREAM BUT AN EVERYDAY REALITY FOR THOUSANDS OF PEOPLE WHO HAVE CHOSEN THE COHOUSING LIFESTYLE, TRADING ISOLATION AND ALIENATION FOR INTERDEPENDENCE AND COMMUNITY. OUR WORLD IS CRYING OUT FOR CONNECTION. THIS IS AN IDEA FOR OUR TIME. WE SHOULD NOT LEAVE THE PROBLEM OF SECURING A FUTURE FOR OURSELVES AND OUR LOVED ONES TO OTHERS. TOGETHER WITH OUR NEIGHBORS, WITH WHOM WE HAVE A PERSONAL RELATIONSHIP, WE CAN CREATE A BRIGHT FUTURE

ALL WE NEED IS YOU

ALL WE NEED IS YOU. WE LOOK FORWARD TO THE HONOR AND PRIVILEGE OF WORKING TOGETHER WITH YOU TO MAKE THIS HAPPEN. **WON'T YOU JOIN US?**

CALL FOR MORE INFORMATION.

CONTACT INFORMATION

726 98TH AV N
NAPLES, FL. 34108
PHONE: 239-450 6060
DEBBY.CREATINGAFUTURE@GMAIL.COM
FACEBOOK.COM/OSPREY VILLAGE A COHOUSING COMMUNITY

COMMUNITY CENTER OVERVIEW

THIS BUILDING IS DESIGNED FOR DAILY USE AS AN INTEGRAL PART OF THE COMMUNITY, AND IS SUPPLEMENTAL TO THE PRIVATE RESIDENCES. SOME OF THE AMENITIES ARE OUTLINED BELOW:

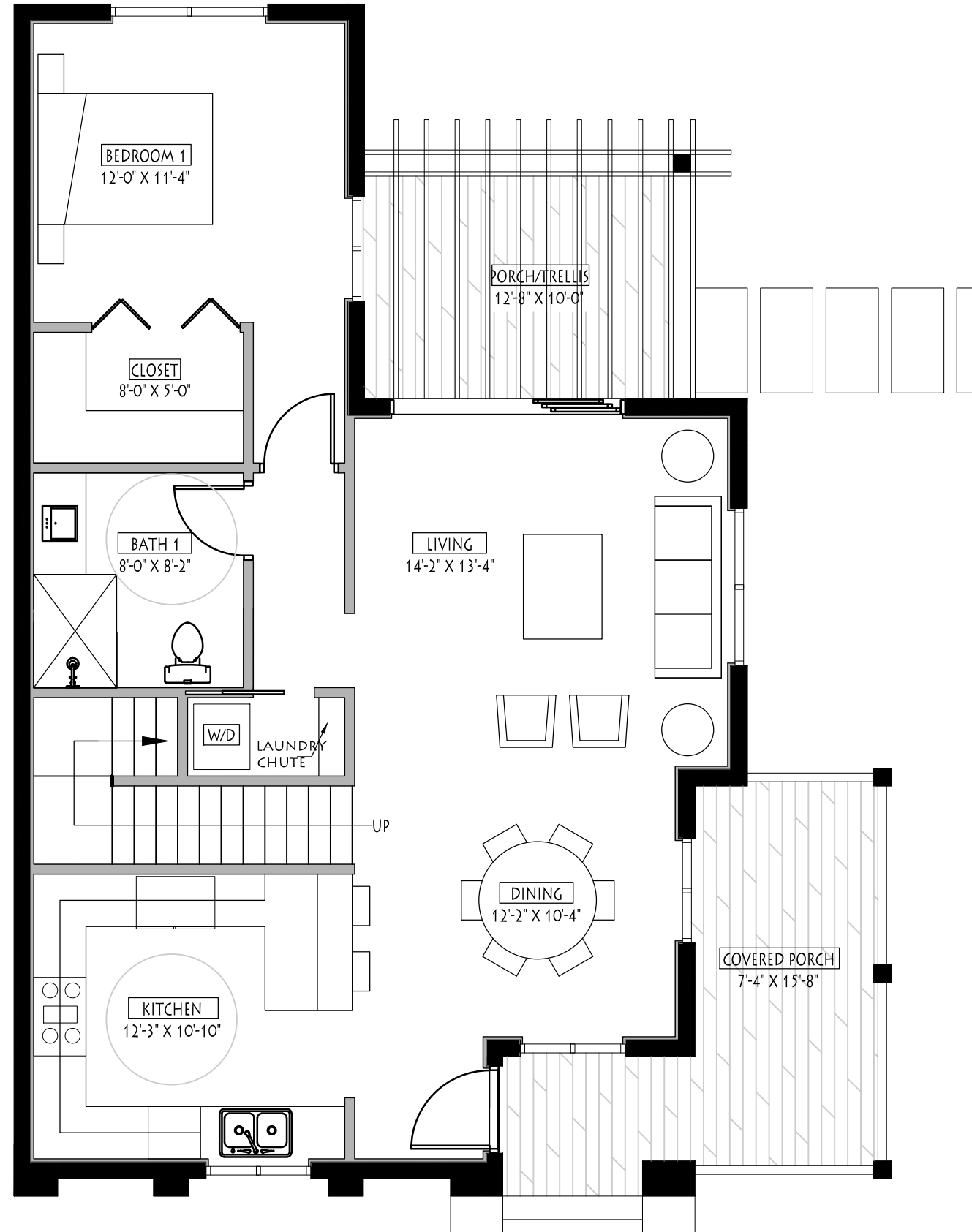
- >> COMMON KITCHEN & DINING
- >> MULTI-PURPOSE GREAT ROOM
- >> CLASSROOMS
- >> POOL
- >> EXERCISE ROOM
- >> MAIL ROOM
- >> GUEST SUITES



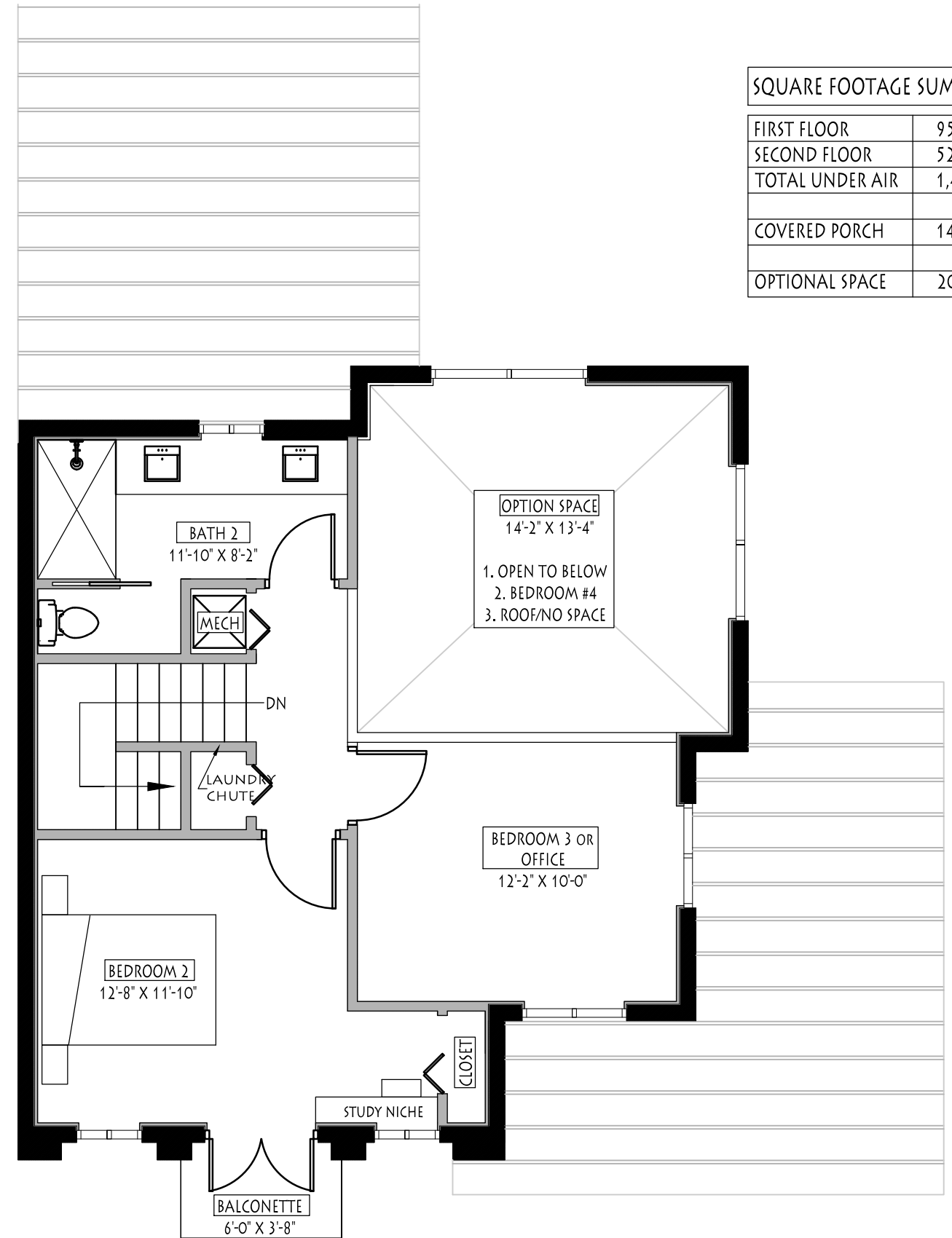
COMMUNITY CENTER CONCEPTUAL RENDERING



OSPREY VILLAGE TOWNHOUSE _END UNIT



FIRST FLOOR PLAN



SECOND FLOOR PLAN

SQUARE FOOTAGE SUMMARY	
FIRST FLOOR	956 S.F.
SECOND FLOOR	525 S.F.
TOTAL UNDER AIR	1,481 S.F.
COVERED PORCH	146 S.F.
OPTIONAL SPACE	202 S.F.

TOWHOUSE DESIGN FEATURES

THIS RENDERING ILLUSTRATES AN END UNIT OF THE TOWNHOUSES. THERE WILL BE 2 OTHER UNIT TYPES (INTERNAL FLATS AND AN INTERNAL TOWNHOUSE) IN THE COMMUNITY THAT SHALL PROVIDE FLEXIBILITY FOR EVOLVING FAMILIES AND DIVERSITY IN UNIT TYPES TO PROVIDE INDIVIDUALITY. THE RESIDENCES WILL BE ENVIRONMENTALLY FRIENDLY, AS WELL AS COST EFFECTIVE SOME OF FEATURES ARE PROPOSED ARE AS FOLLOWS:

- >> STRUCTURAL INSULATED PANEL CONSTRUCTION
- >> ENERGY EFFICIENT WINDOWS
- >> USE OF RAPIDLY RENEWABLE MATERIALS
- >> HIGH EFFICIENCY HVAC AND APPLIANCES
- >> EASILY MAINTAINED PRODUCTS
- >> PROJECT TO BE DESIGNED TO BE CERTIFIED BY THE
FLORIDA GREEN BUILDING COALITION



TOWNHOUSE_END UNIT CONCEPTUAL RENDERING

