

# Elizabeth Mine

Site Update  
November 2012

Elizabeth Mine  
Public Update - November 28, 2012

- Status of cleanup work
- Remaining activities
- Photo Update
- Monitoring data update
- Questions

**Elizabeth Mine  
Public Update - November 28, 2012**

- 2011/2012 Completed Cleanup Work
  - Cover system for TP-1 and TP-2
  - Bulk removal of mine waste at South Mine and SOC haul road
  - WWII Building area waste removed and area restored
  - Copperas channel repaired
  - Borrow area restored
  - Mine Road sediment basin restored
  - Continued operation of Water Treatment Plant
  - Continued long-term monitoring of surface water and groundwater

TP-1/TP-2

North Open Cut

South Open Cut

South Mine

Channel Repairs

WWII Building Removal and Restoration

TP-1/TP-2 Cover System

Borrow area Restoration

Remove sediment basin and establish Copperas Channel. Green remediation restoration

Elizabeth Mine  
Public Update - November 28,  
2012

- **Remaining NTCRA Activities**

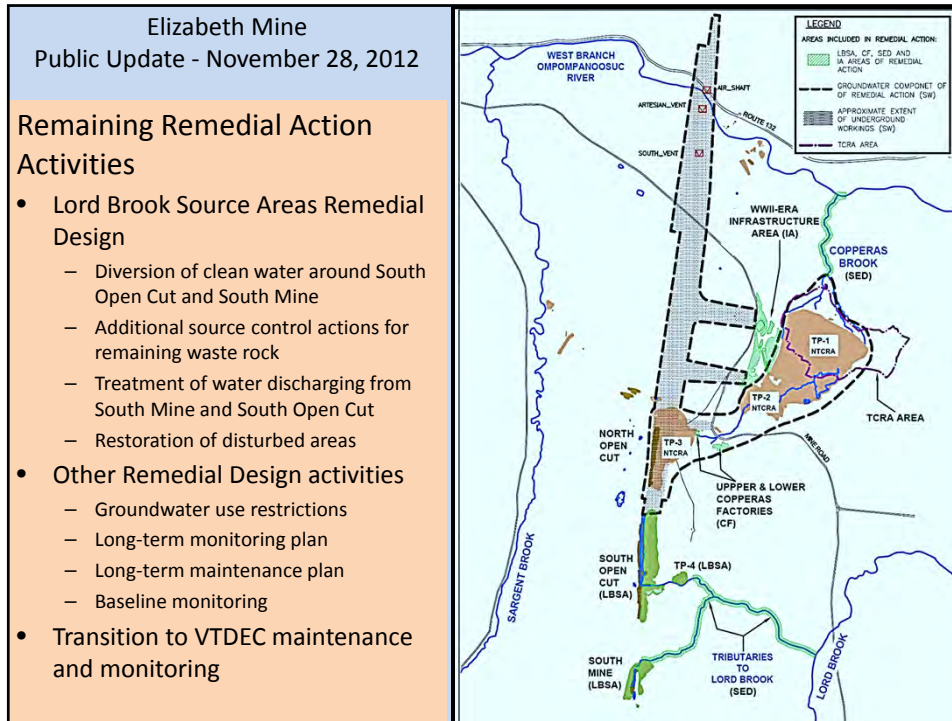
- Interim treatment system operation
- Passive treatment system construction
- Continued restoration of disturbed areas
- Punch List items
  - Establish good vegetative cover and stabilize any areas experiencing soil erosion
  - Complete stabilization and establish vegetation for off-cap areas



Elizabeth Mine  
Public Update - November 28, 2012

- **Water treatment plant**
  - Began operation in July 2008
  - Gallons of leachate treated through 2012 – 29,966,573 gallons (approx 30 million gallons)
  - Estimated iron removed from WBOR – 180,000 lbs or 90 tons
  - Lime used – 182 tons of quick lime
  - EPA expect to operate the WTP through 2015 assume passive treatment system can be operational in 2016



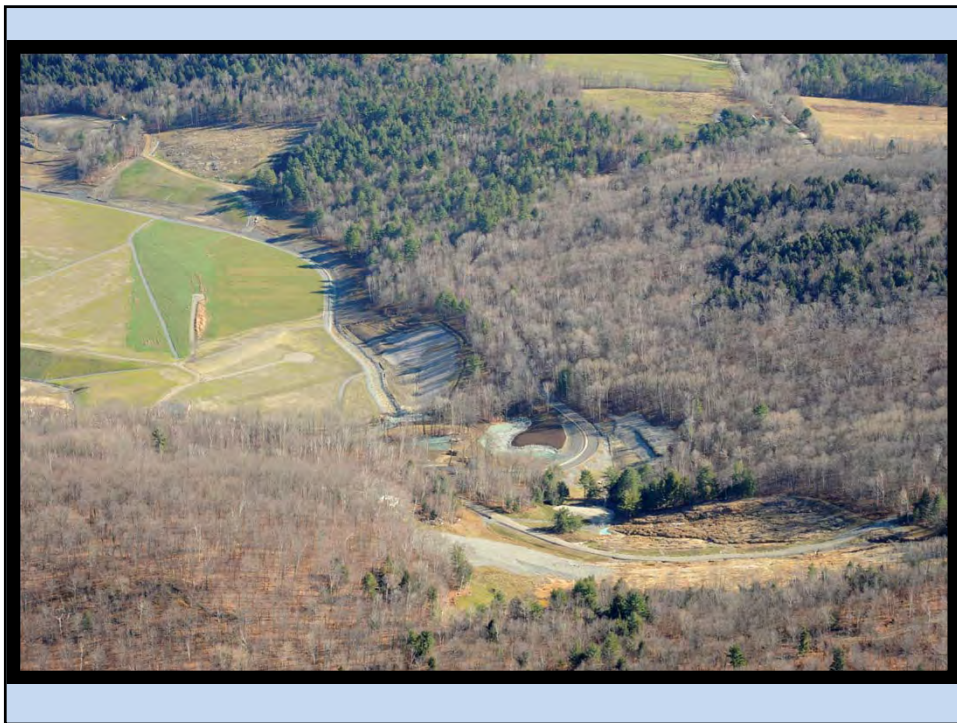


Photographs of Site



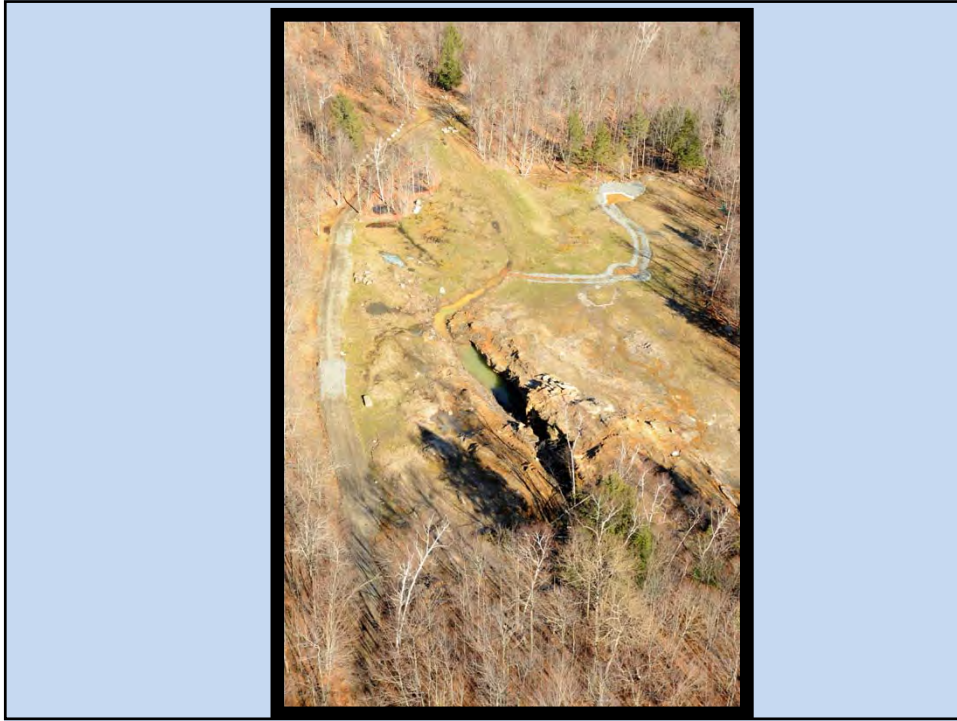












TP-1 and TP-2 from Mine Road (School bus turnaround)



TP-1 and TP-2 from Mine Road (School bus turnaround)



WWII Building Foundations from Mine Road (School bus turnaround)



WWII Building Foundations from TP-1



WWII Building Foundations from Site Access Road



TP-3 From Copperas Road



TP-3 From Copperas Road



TP-3 From Copperas Road

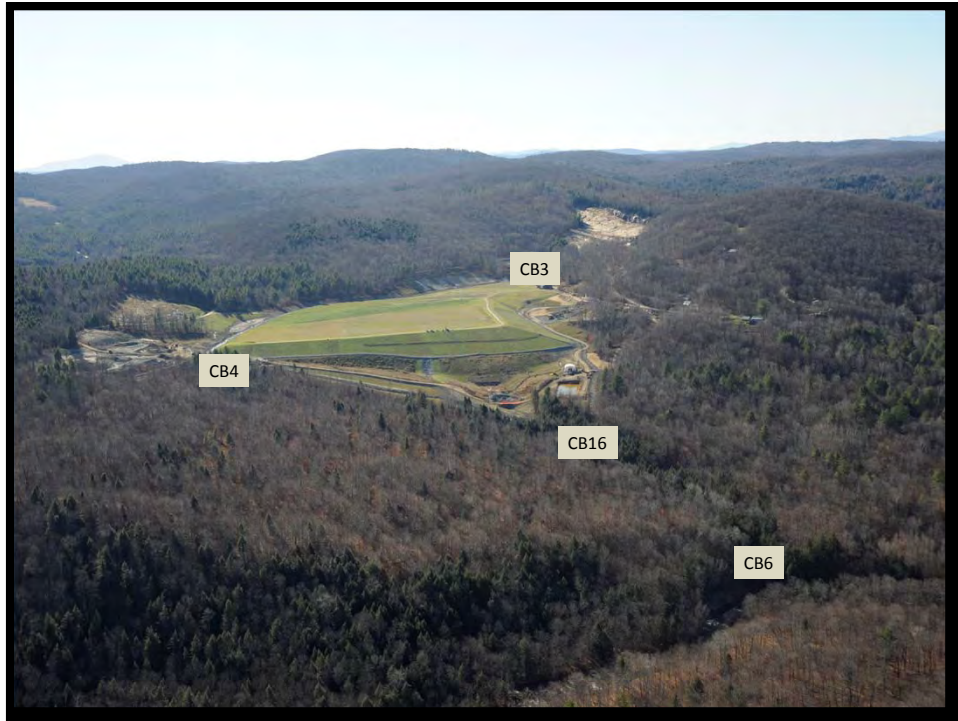


South Mine From Copperas Road



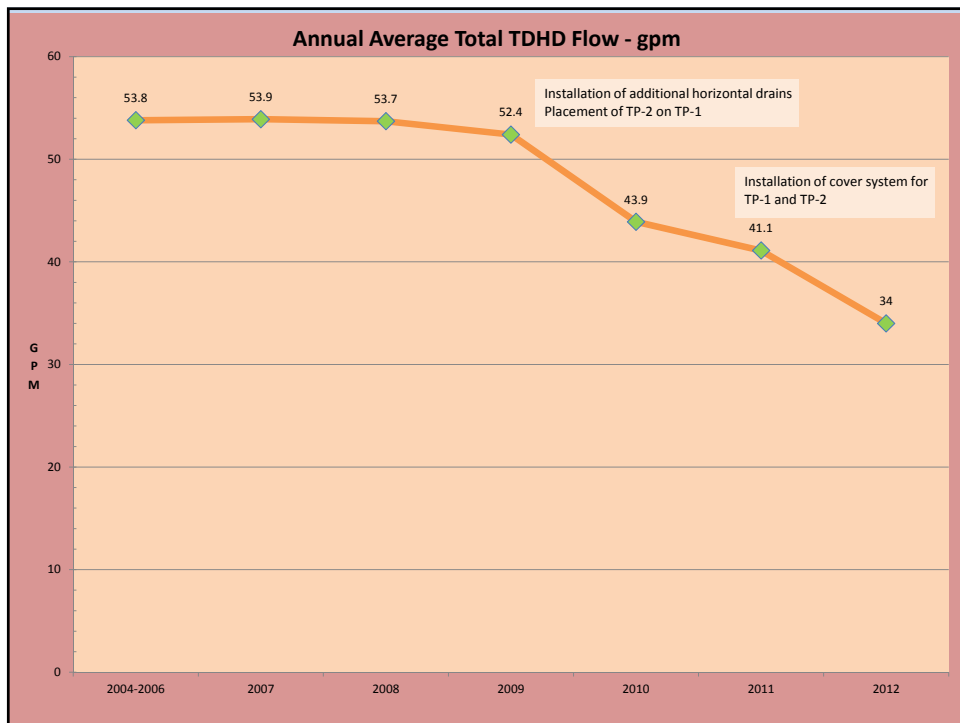
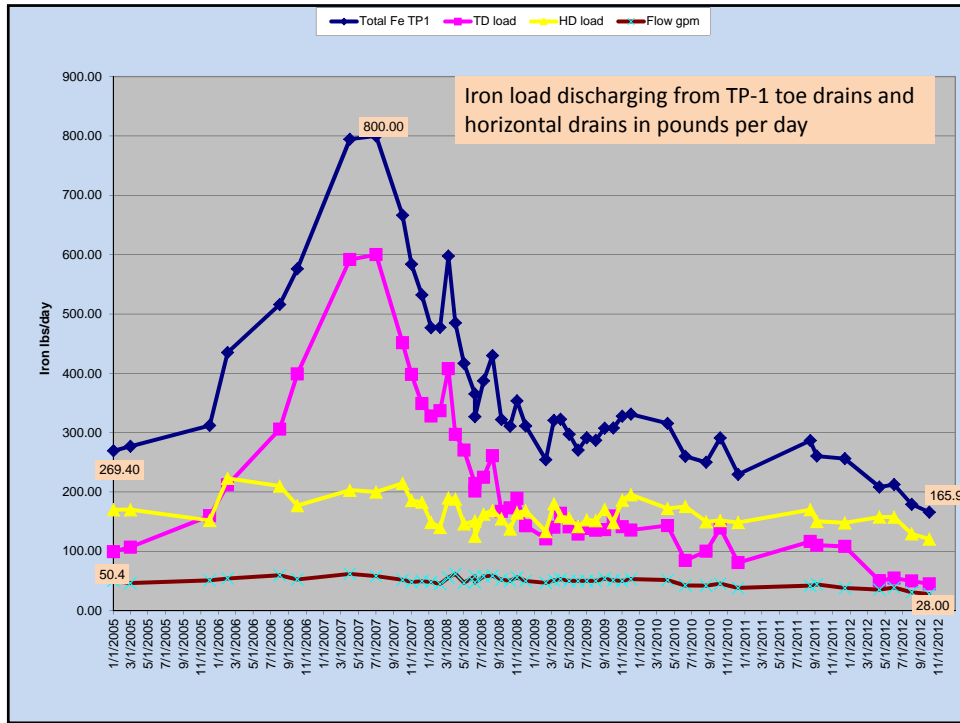
South Mine from Copperas Road

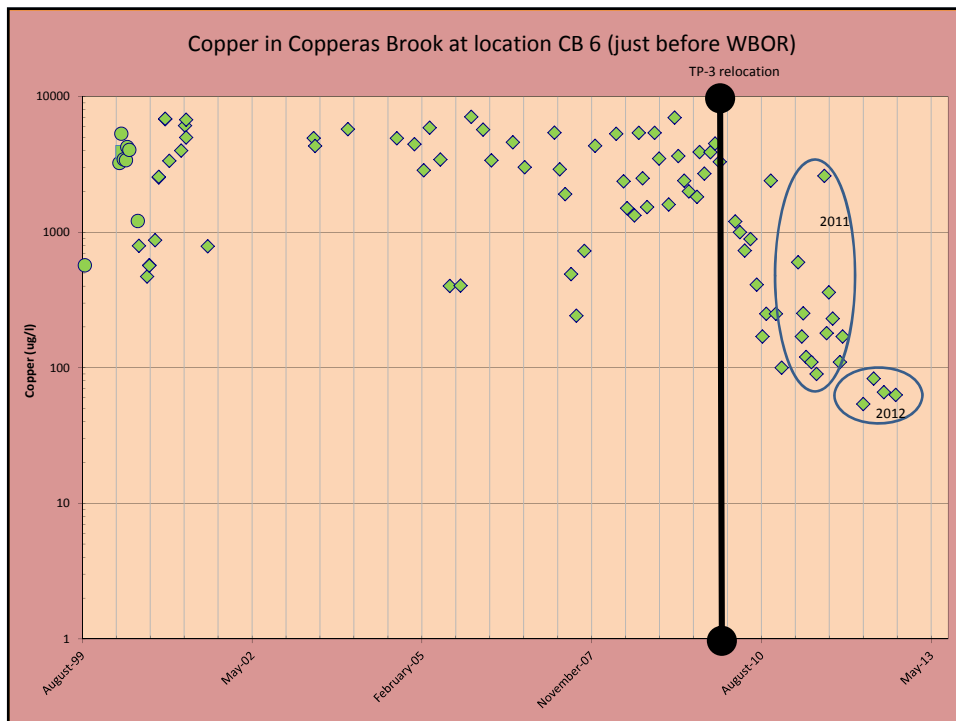
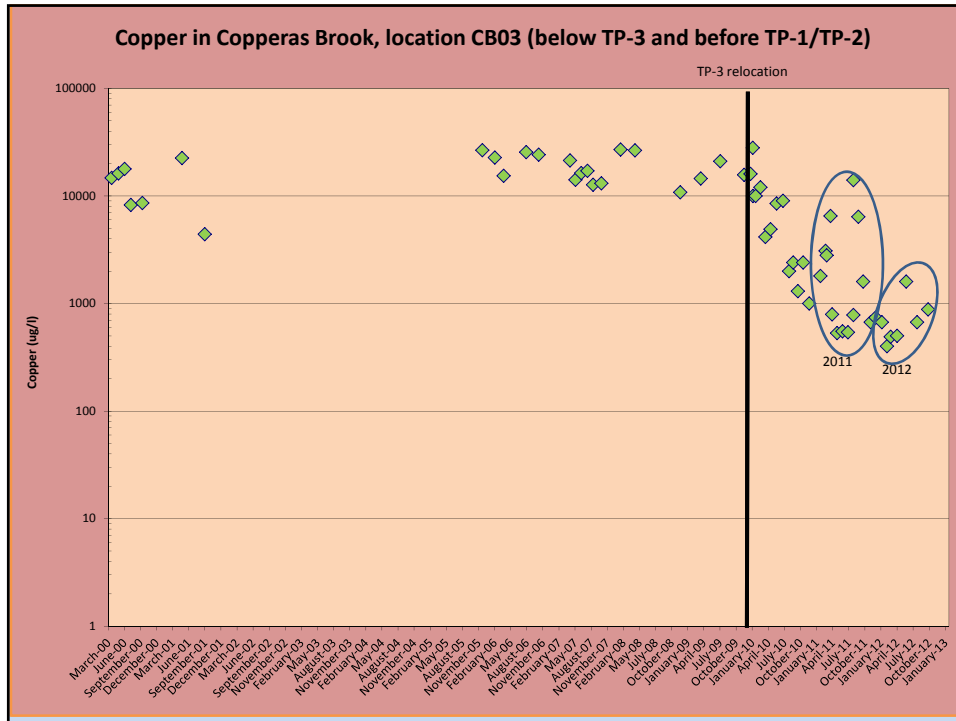


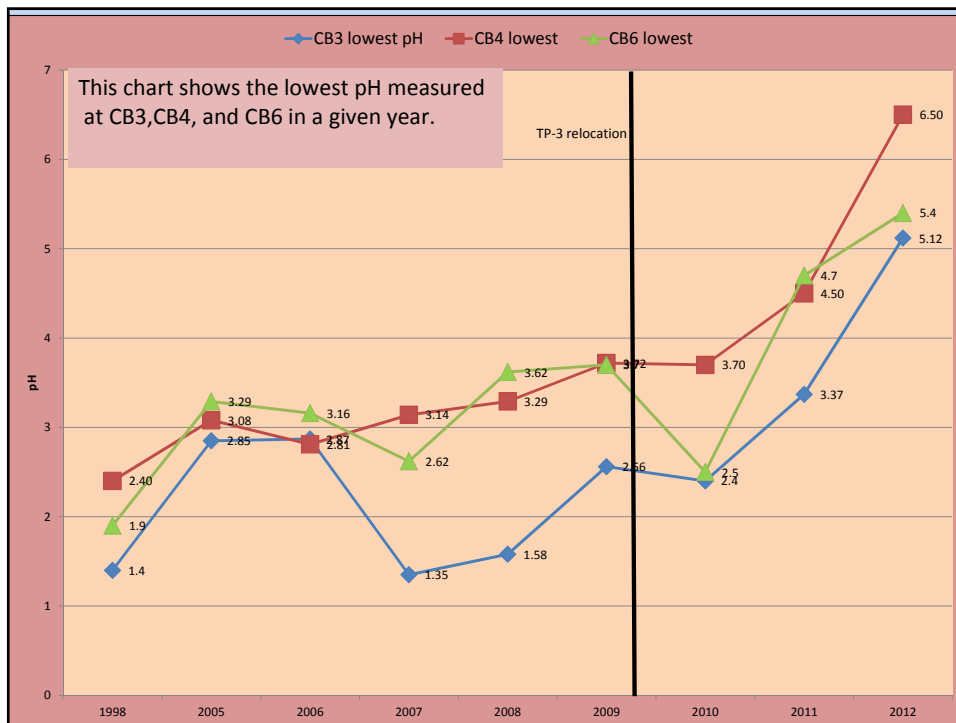
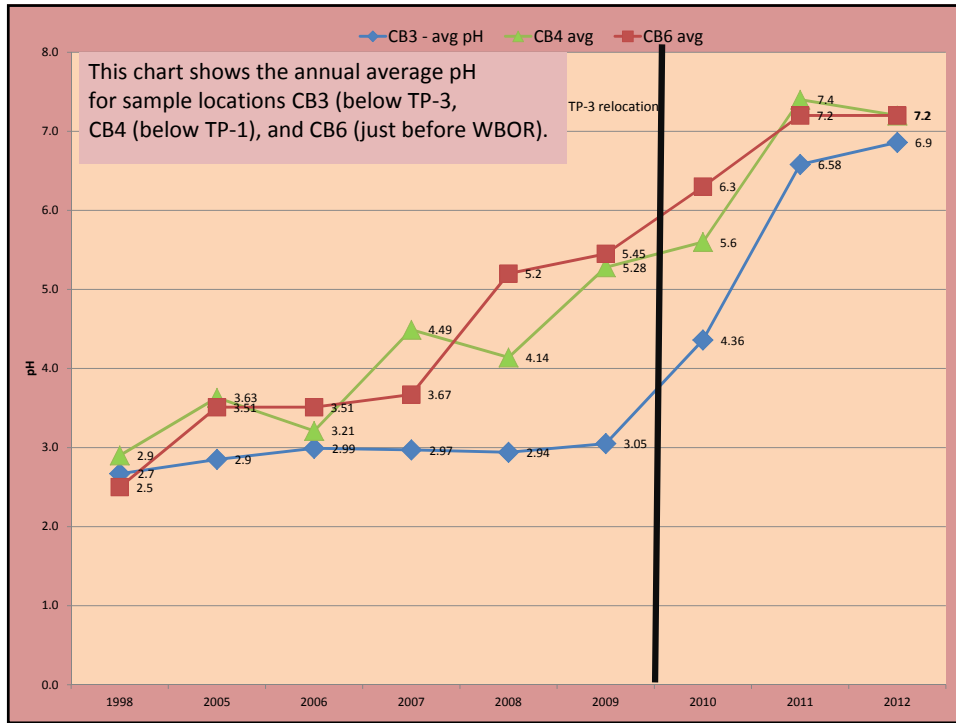


## Monitoring Data









Questions