

WHO Director - General Election Poll

...



Overview

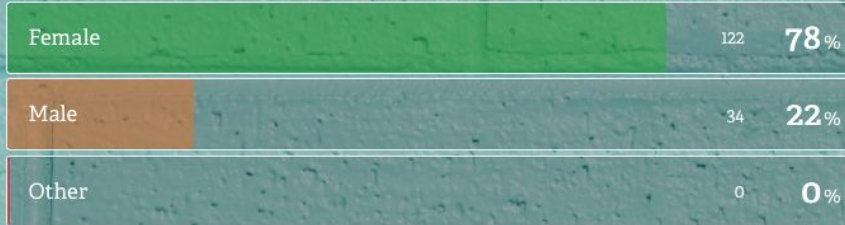
Women in Global Health conducted an online survey, during the month of December, after most of the WHO DG candidates' public engagements had taken place, to ask the online global health community about their perspective on the candidates and the elections. We shared our survey through our social media platforms and those of our partners.

Our survey was meant to inspire interest and probe deeper into the perspectives of the global health community on the WHO Election.

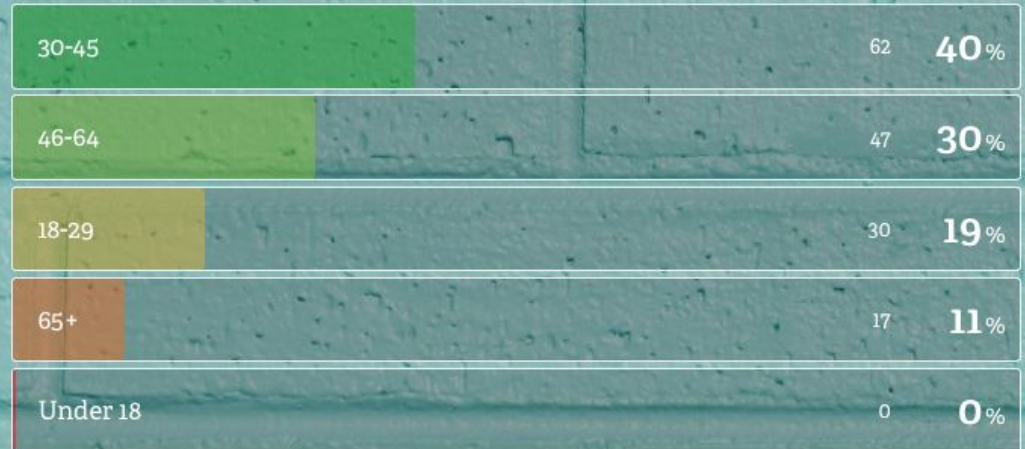
There were a total of 222 participants with 157 completed surveys. The trends, comments and questions are quite interesting.

Respondent Demographics

What is your gender?



What is your age?



Respondents' Sector of Work

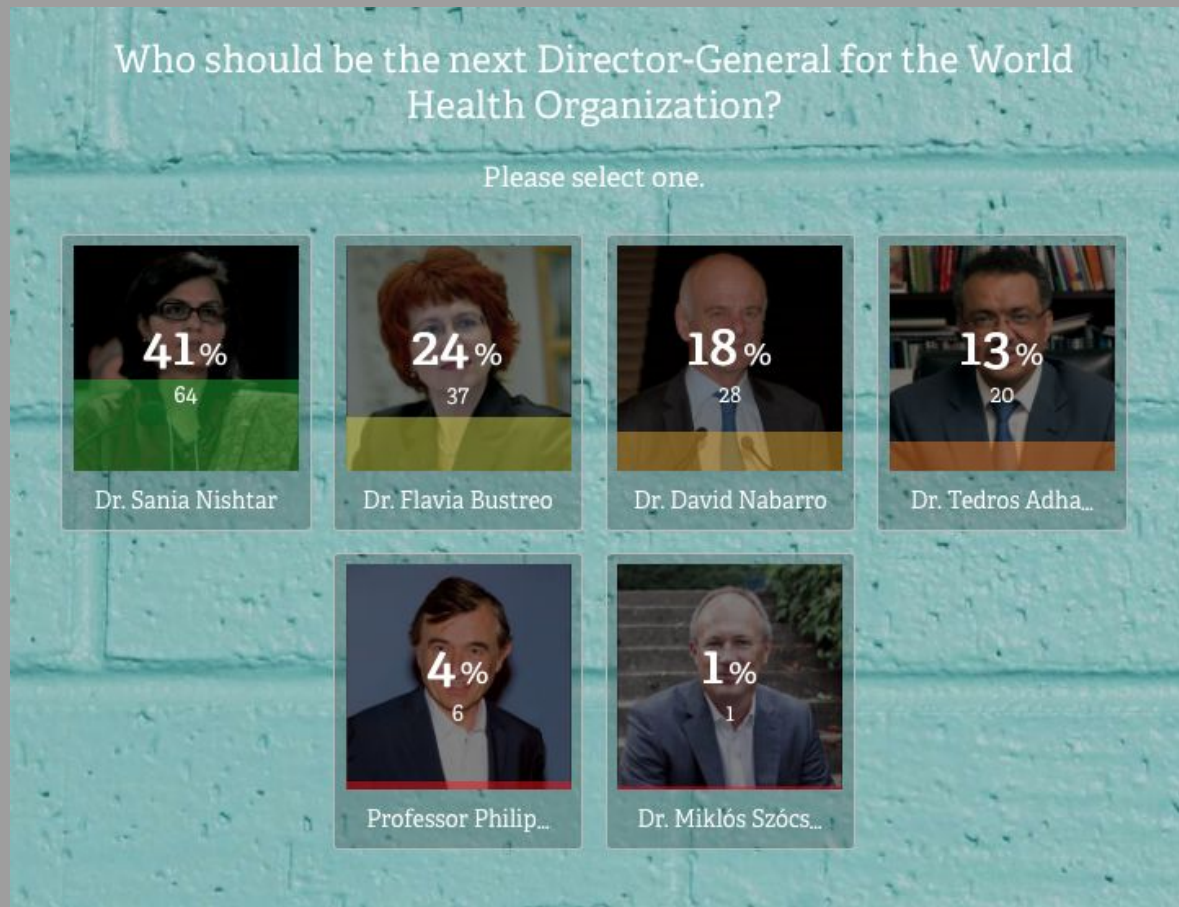
What is your sector of work?



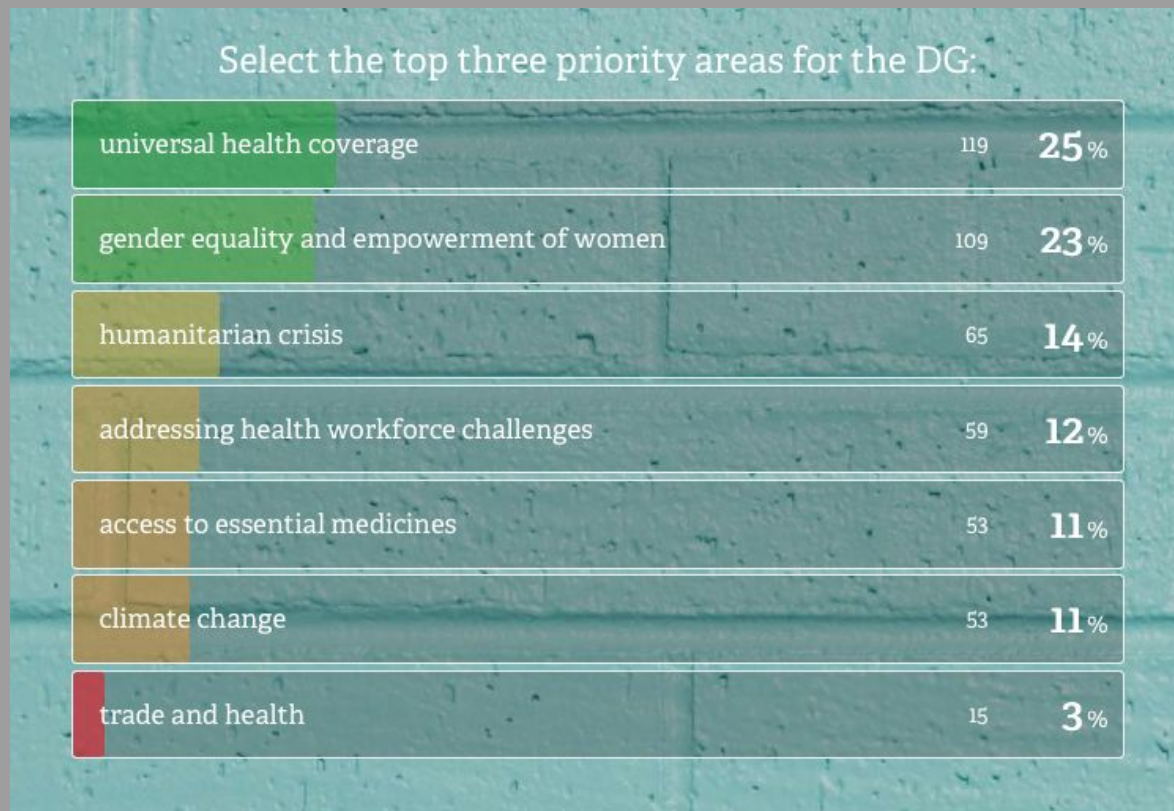
Average interest in WHO Director-General Election



The Candidates



Top 3 priorities respondents found most important



Three most important leadership characteristics, according to those who completed survey

According to the The Blavatnik School of Government, CFR, Women in Global Health and Women Who Lead, these are the leadership characteristics needed for UN work.

Please select the top three you think are most important.



Survey perspectives on Gender and Leadership

Do you agree with the following statement?
"Gender factors into the perceived leadership qualities of the
candidates and will impact how the next WHO Director-
General is selected."



Based on your previous answer, would you advocate to the
WHO governing bodies for a gender equal short-listing of the
candidates during the first round of voting at the January
WHO Executive Board meeting?





Contact: info@womeningh.org