



MF-22 RAPTOR

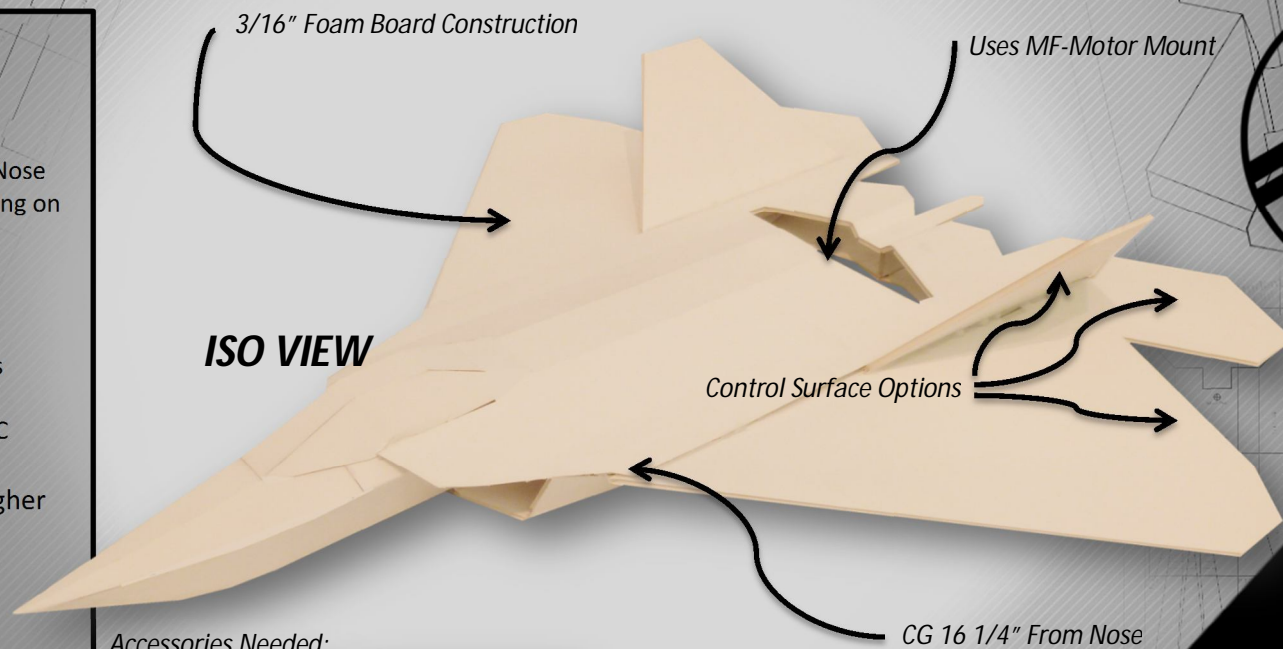
BASIC SPECS

WINGSPAN: 28 inches
LENGTH: 32.5 inches
WEIGHT: 20 to 25 Ounces
CENTER OF GRAVITY: 16 1/4" From Nose
TOP SPEED: 30mph to 60+ (Depending on Power System)

Recommended Parts

MOTOR: 2212/6 or Higher Brushless Outrunner
ESC: 30 AMP or Higher Brushless ESC
PROP: APC 6x4
Battery: 2100mAh 3S (30C or Higher Lipo)

Servos: 2 to 4 Metal Gear
Radio and Receiver: Any 4-channel or better (2.4ghz preferred)



Accessories Needed:



TEMPLATE ASSEMBLY KEY PLAN

(rc Model Airplane Construction Plans)

MESA rcFoam Fighters

MF-22 RaptorTemplate

(Design by Colton Vogel)

(CAD Drawing by MESArcFF)

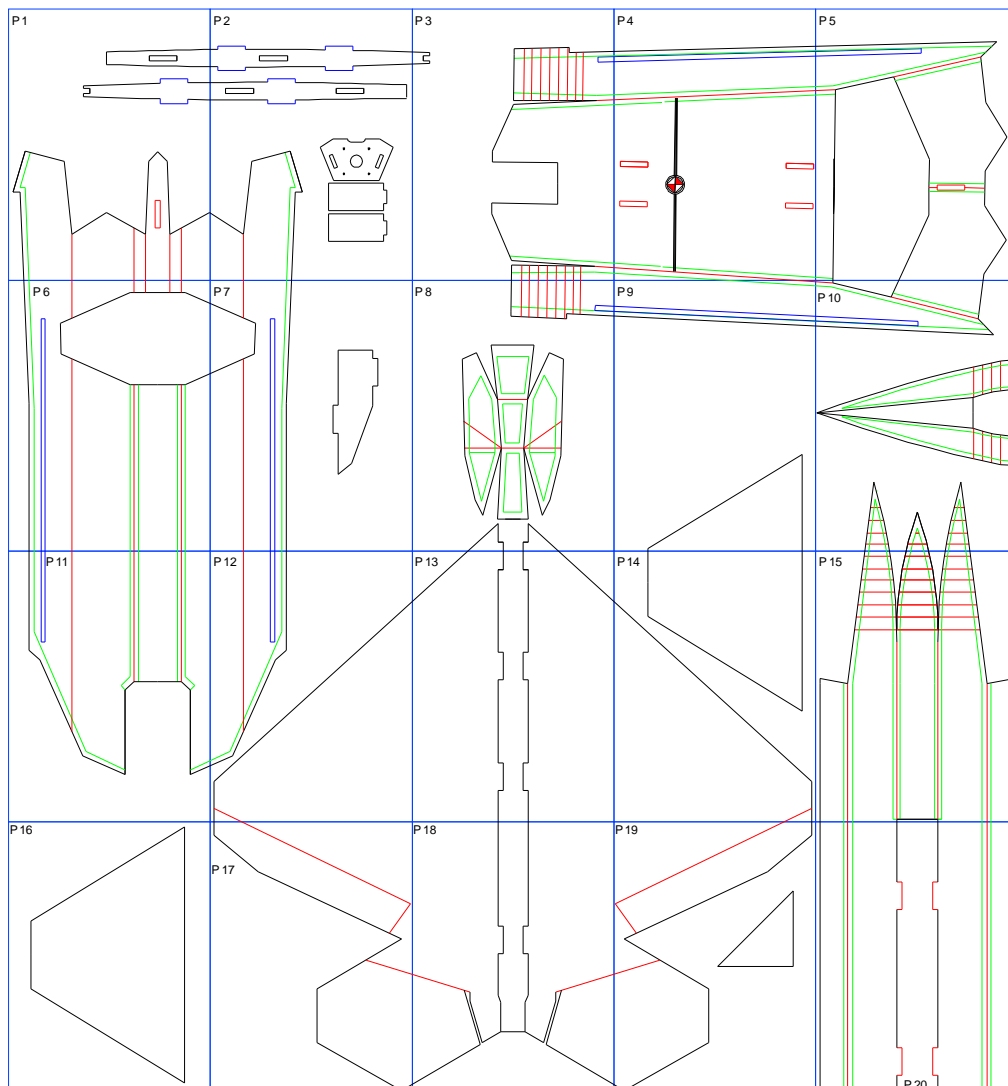


INSTRUCTIONS (Choose Print to "NONE")
PRINT TEMPLATE SHEETS. CUT AND ASSEMBLE AS SHOWN.

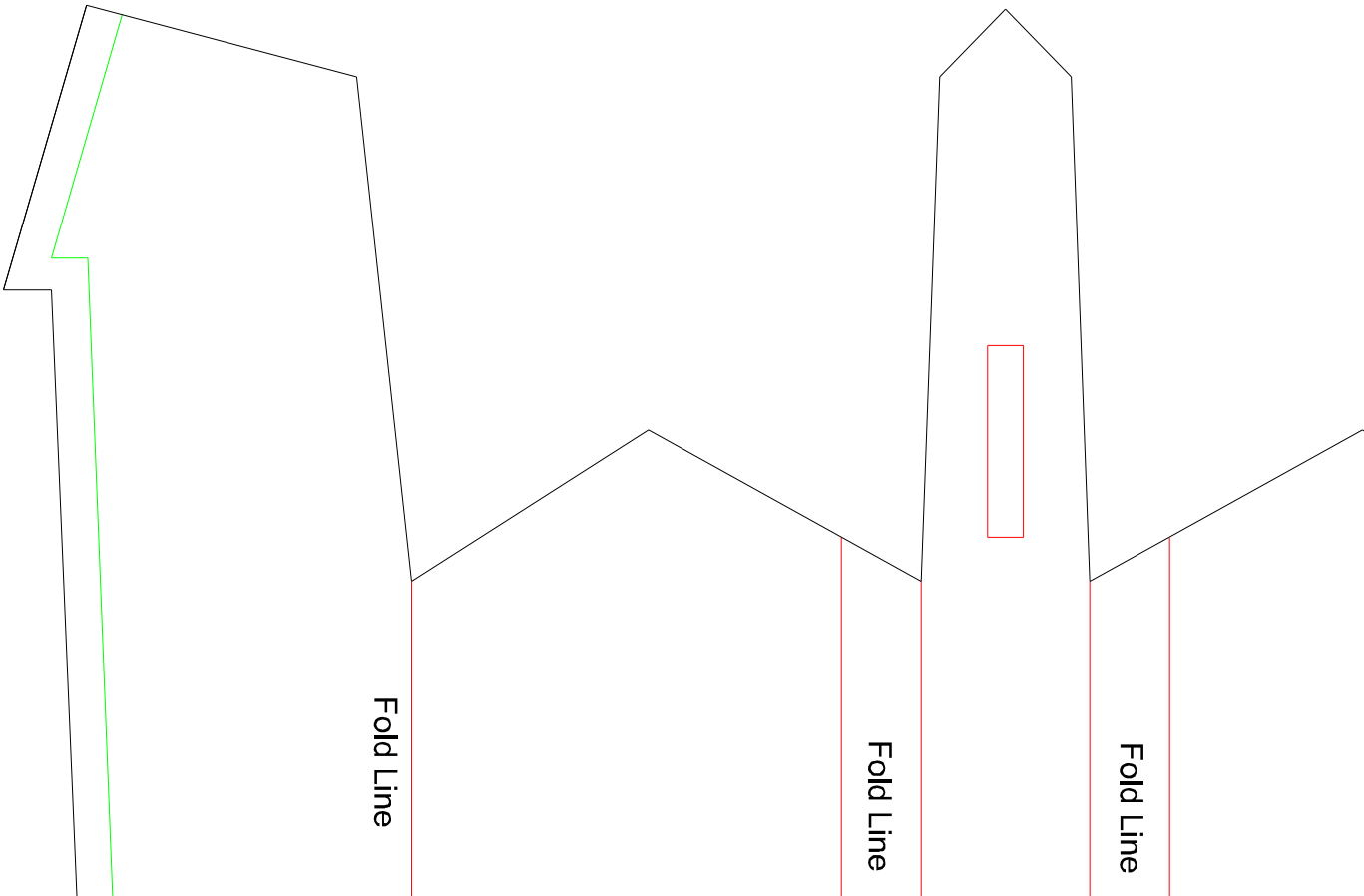
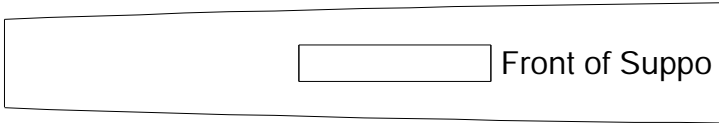
See YouTube Channel for MF-22 Raptor Build Video



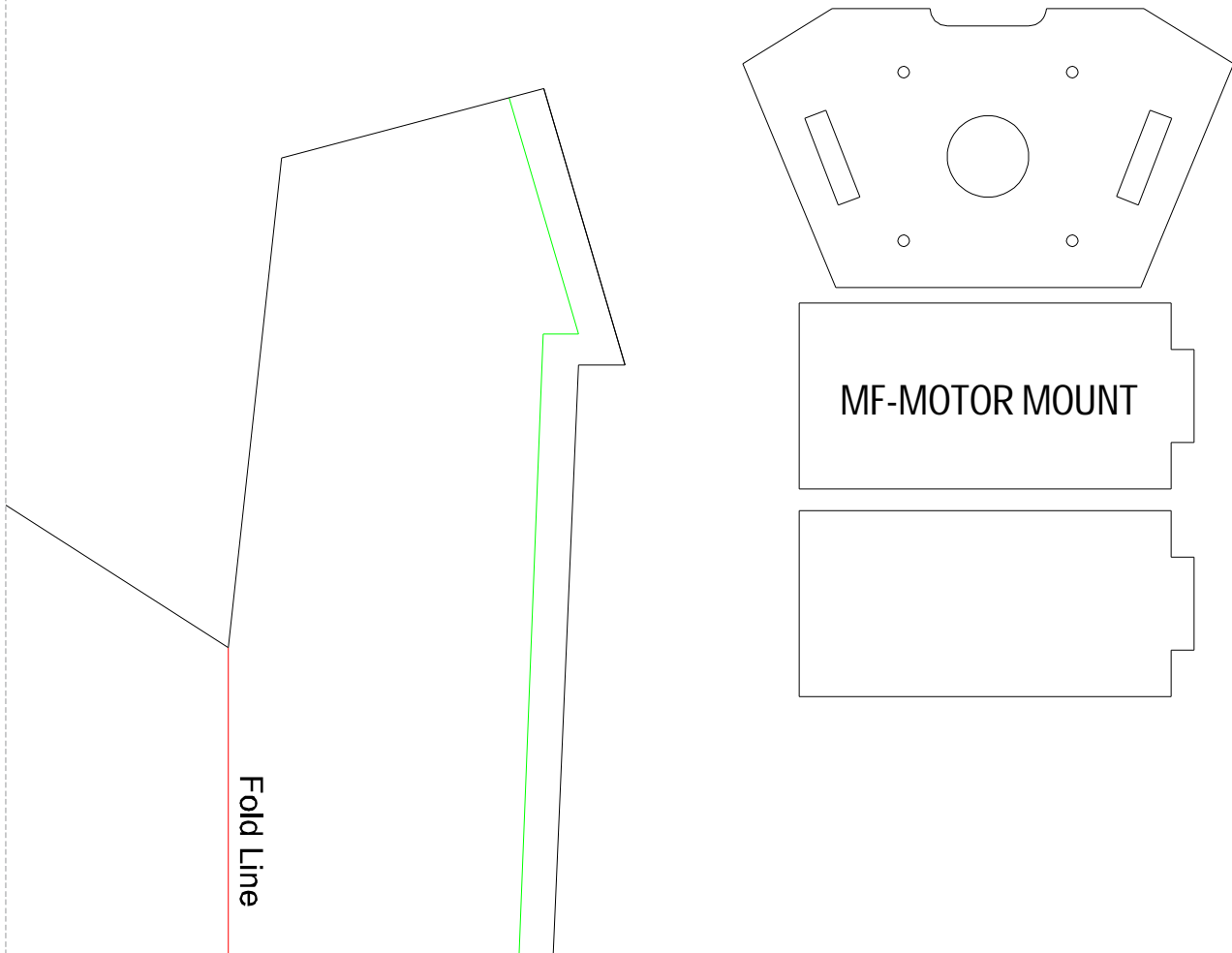
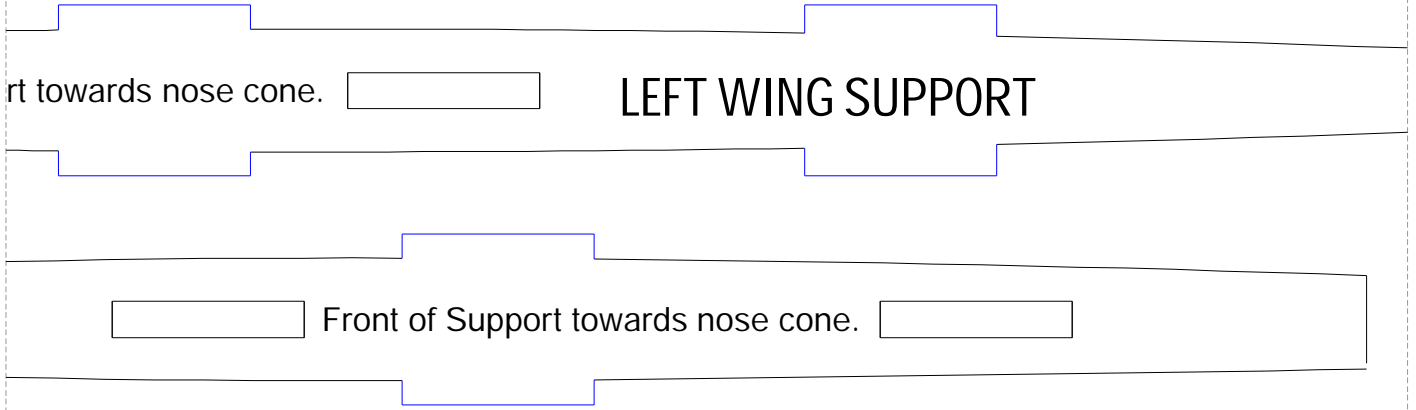
Check Distance to Insure Correct Scaling.



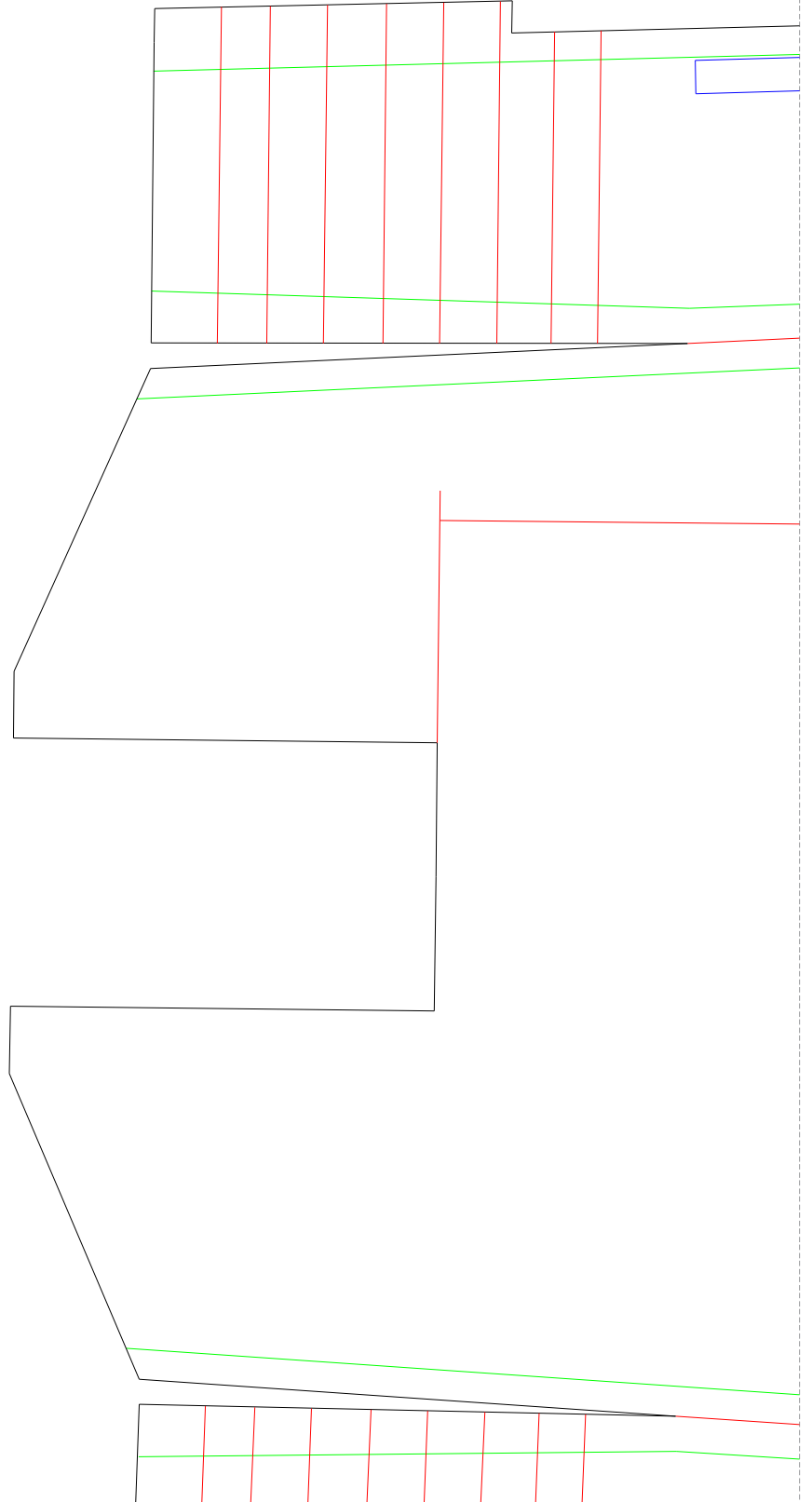
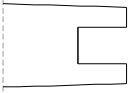
P 1



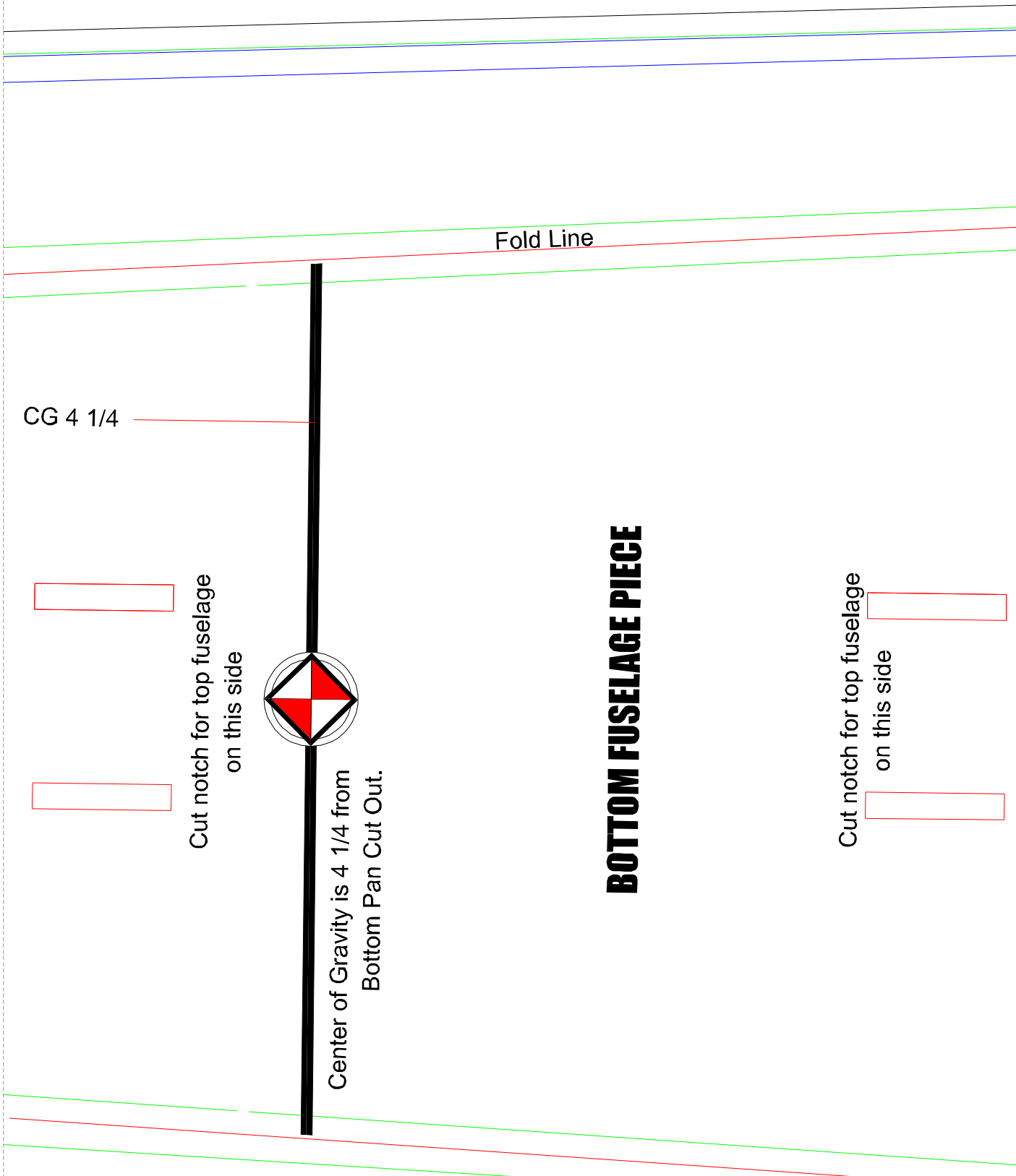
P2



P 3



P 4



Fold Line

CG 4 1/4

Cut notch for top fuselage
on this side

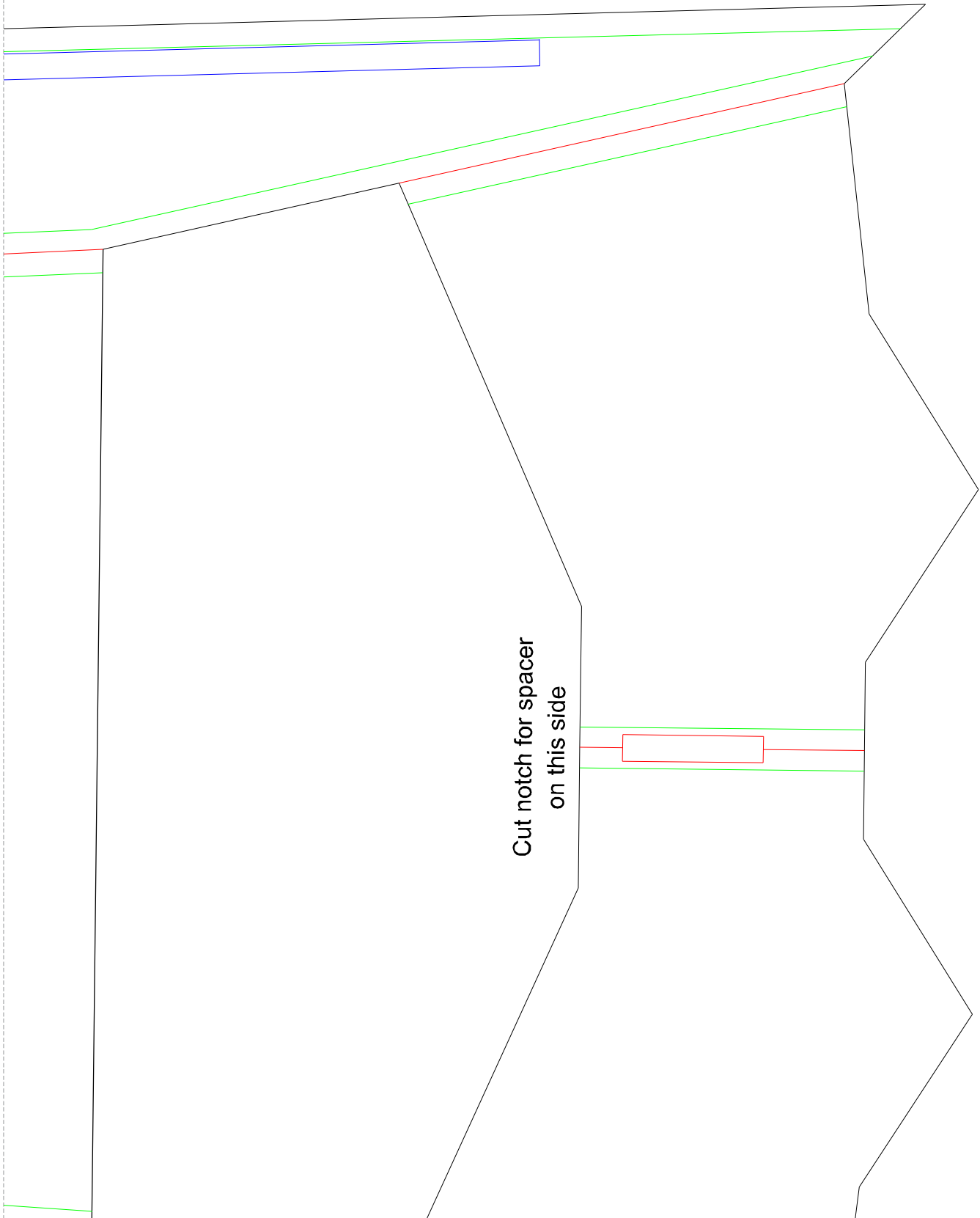


Center of Gravity is 4 1/4 from
Bottom Pan Cut Out.

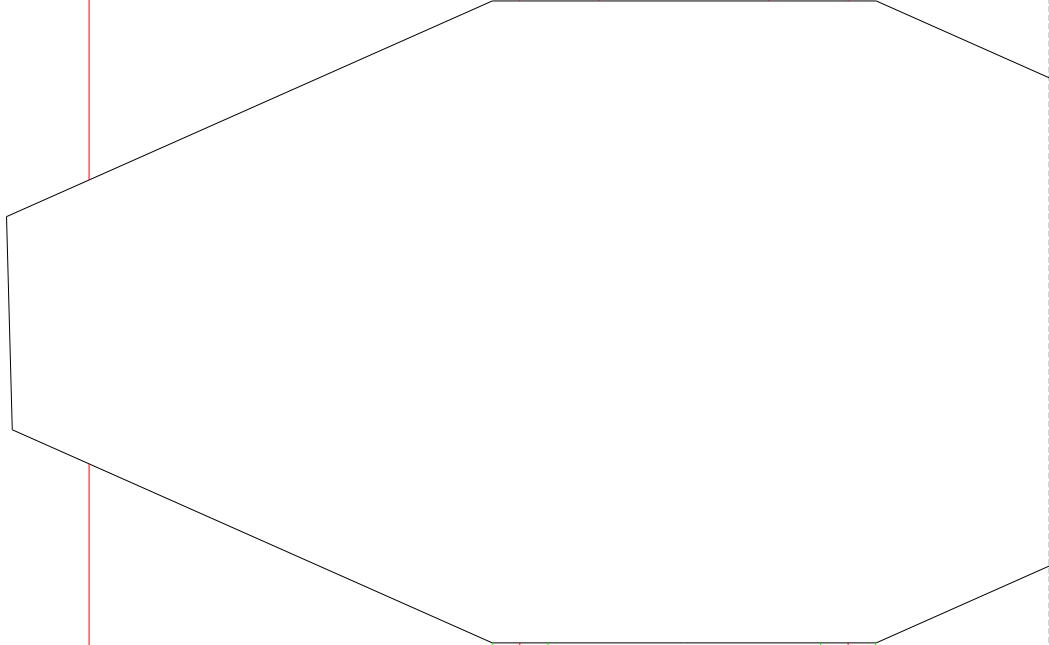
BOTTOM FUSELAGE PIECE

Cut notch for top fuselage
on this side

P5

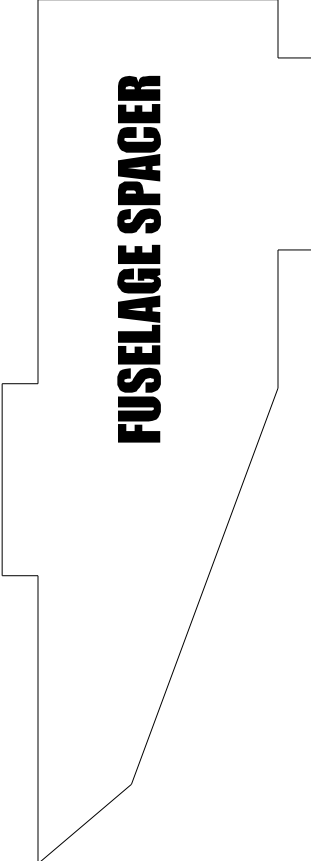
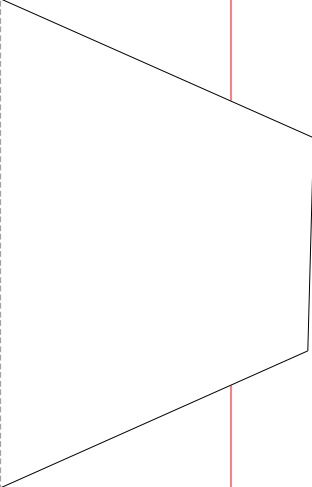


P 6



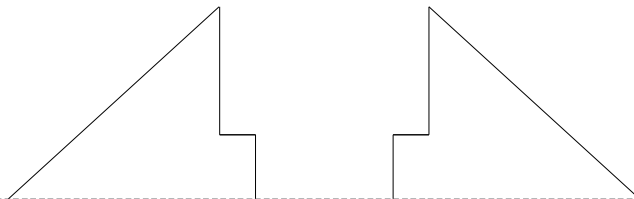
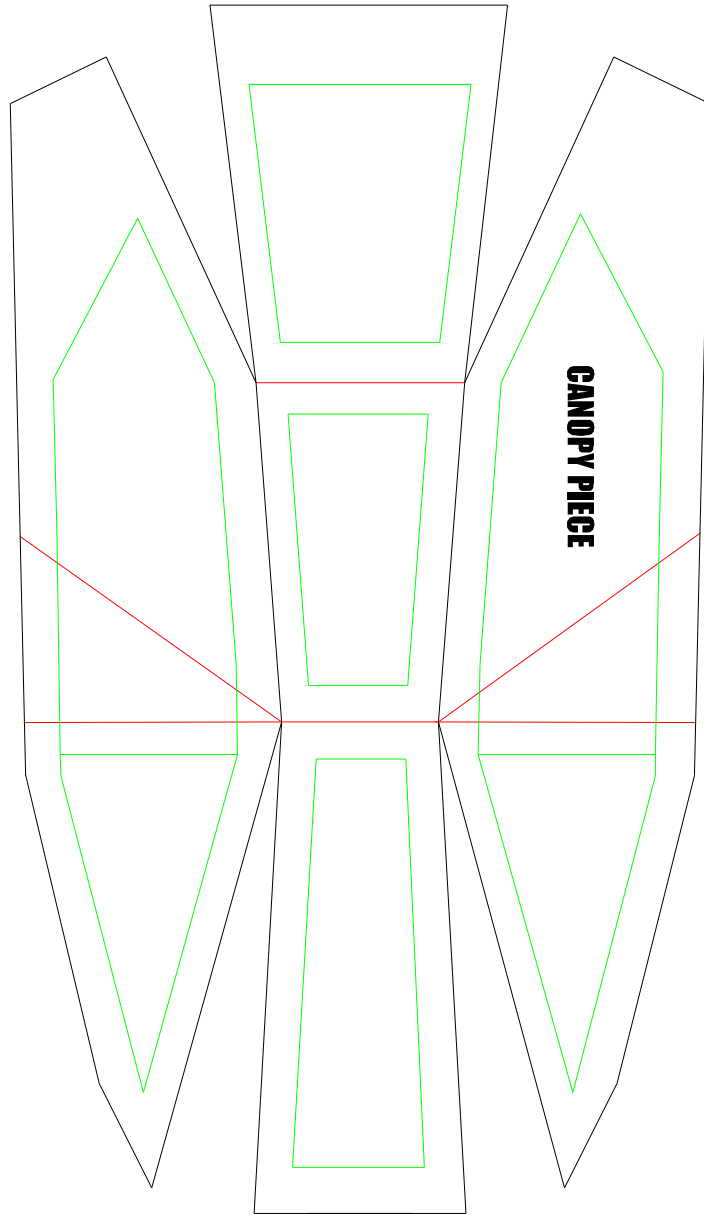
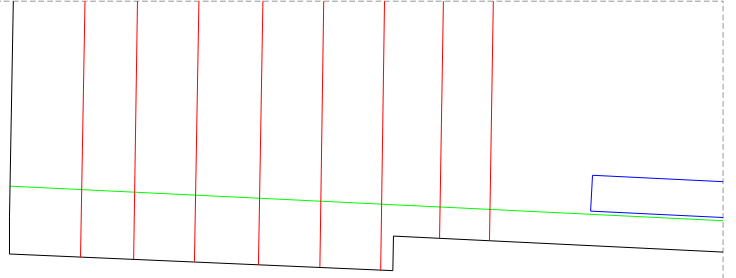
TOP FUSELAGE PLATE PIECE

P7

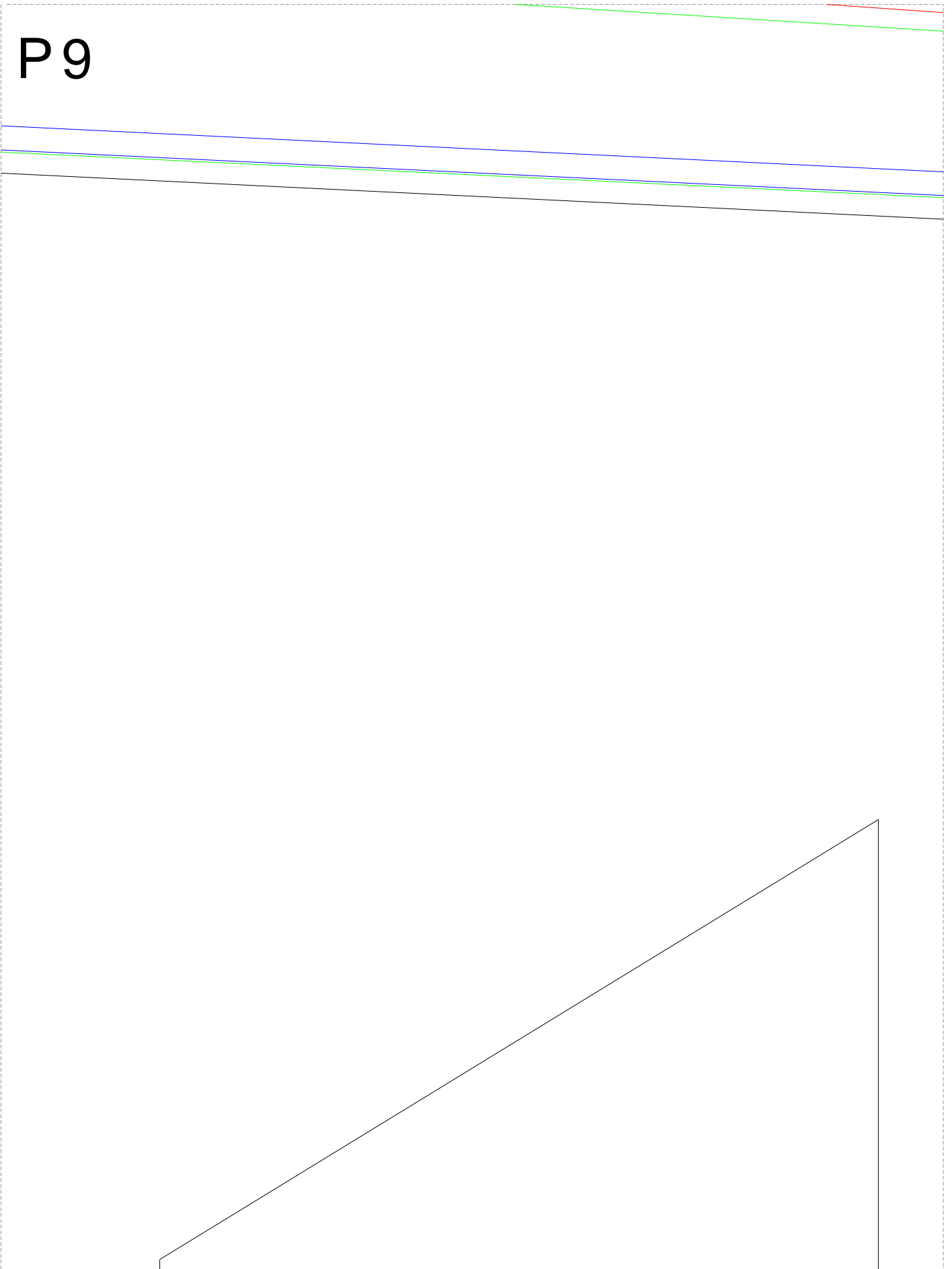


FUSELAGE SPACER

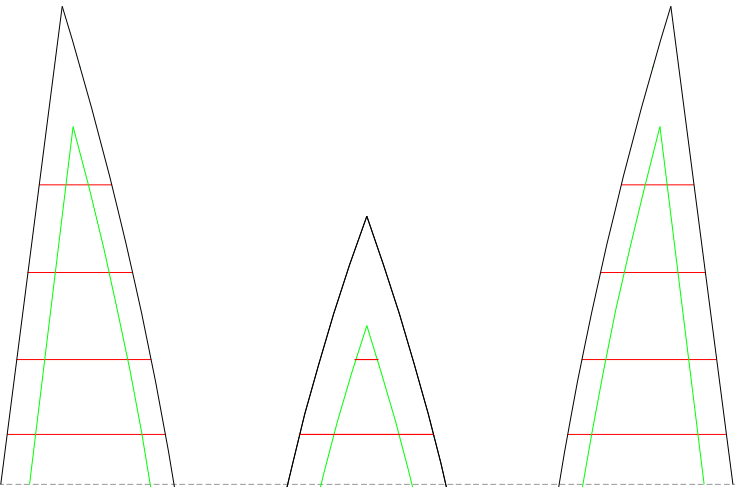
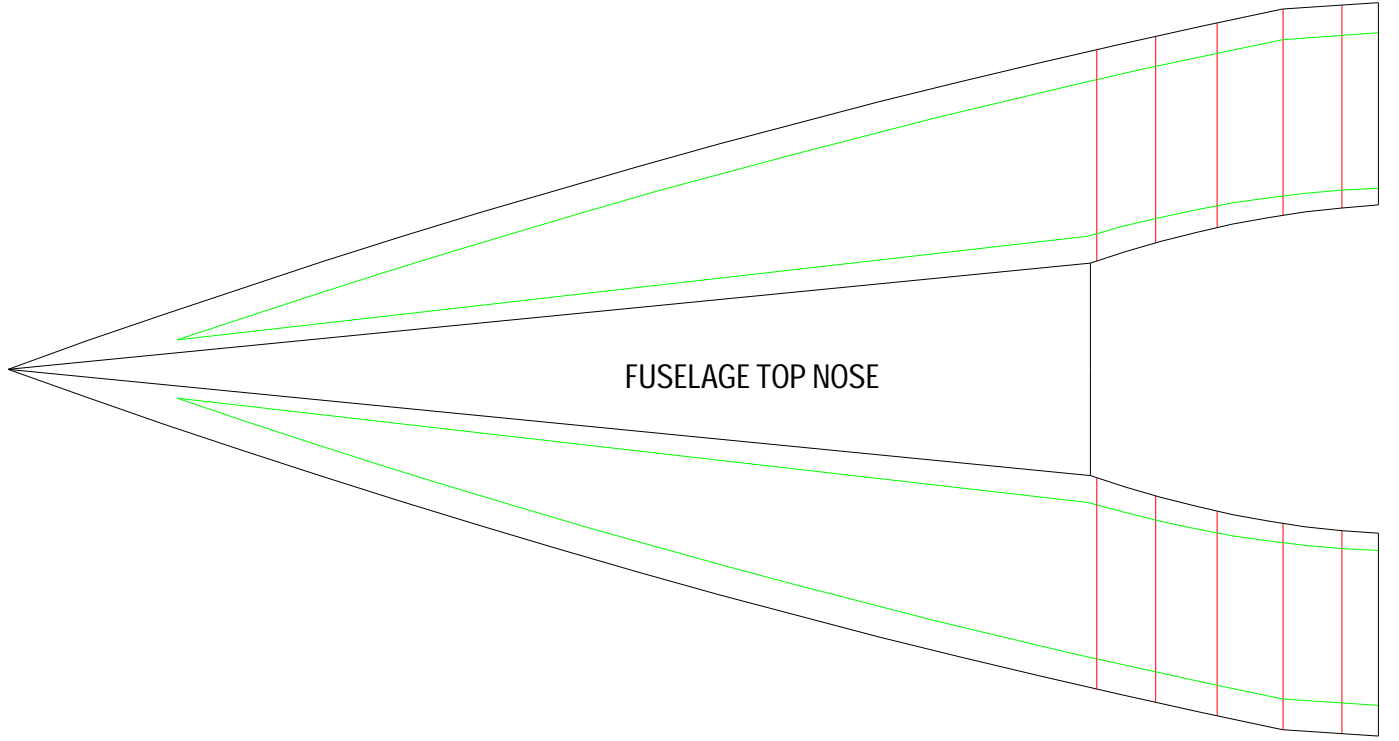
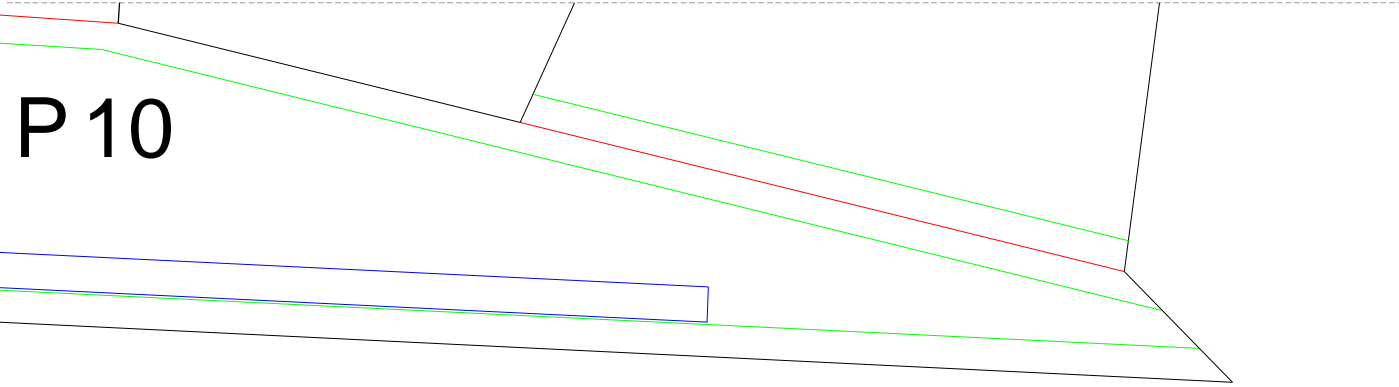
P 8



P9

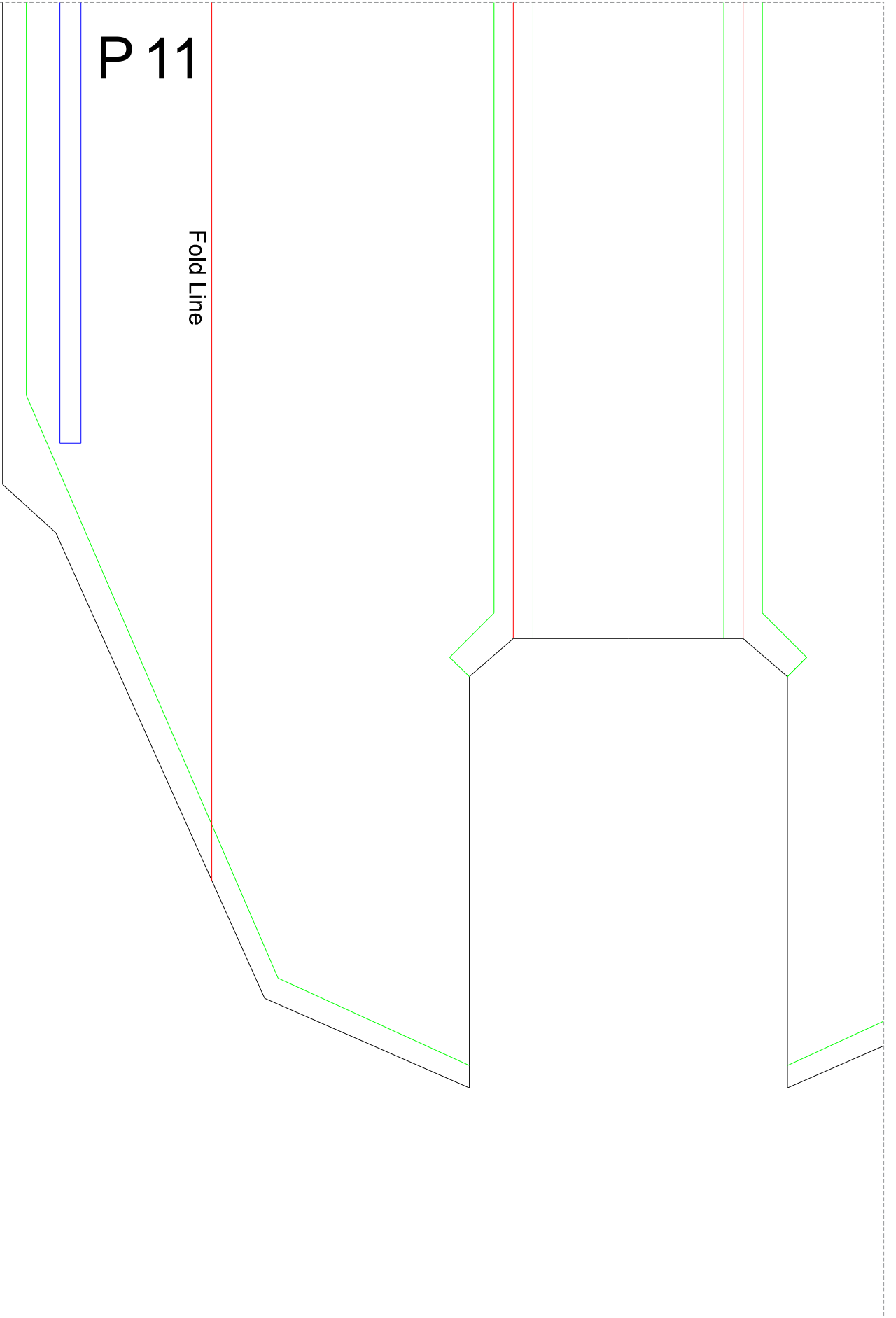


P 10



P 11

Fold Line



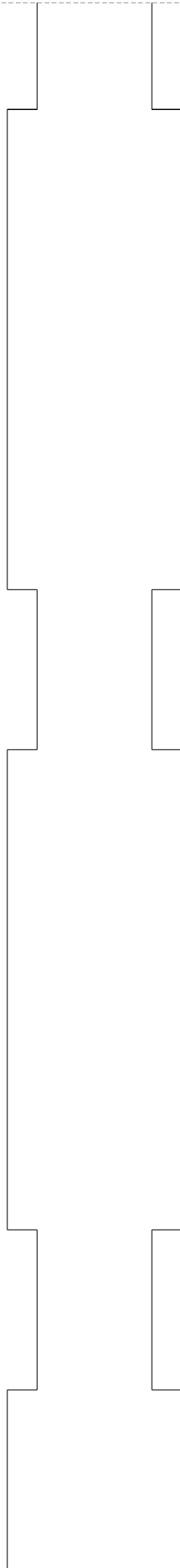
P 12

Fold Line

LEFT MAIN WING PIECE



P 13



P 14

**RIGHT VERTICAL
STABILIZER**

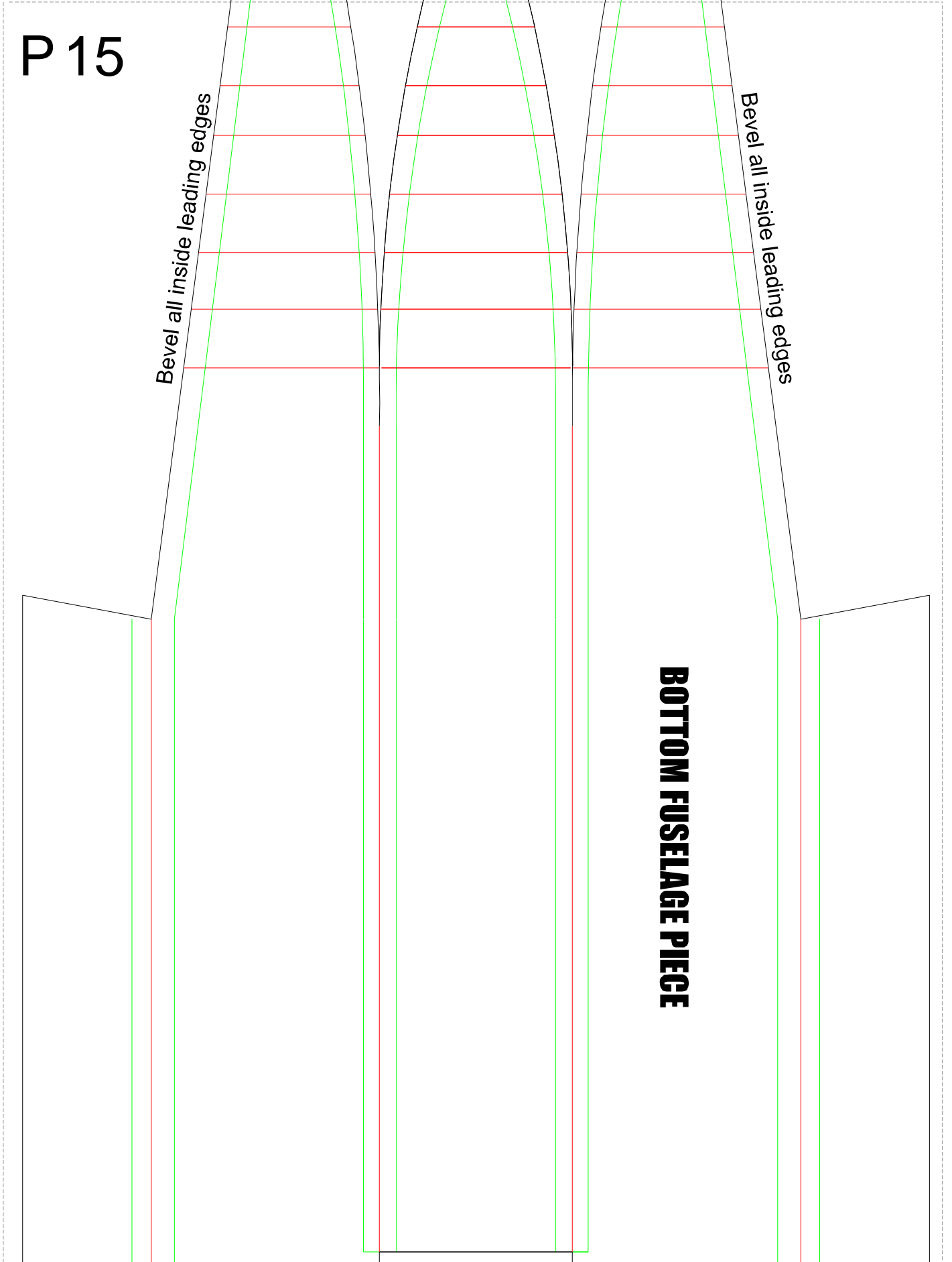
RIGHT MAIN WING PIECE

P 15

Bevel all inside leading edges

Bevel all inside leading edges

BOTTOM FUSELAGE PIECE



P 16

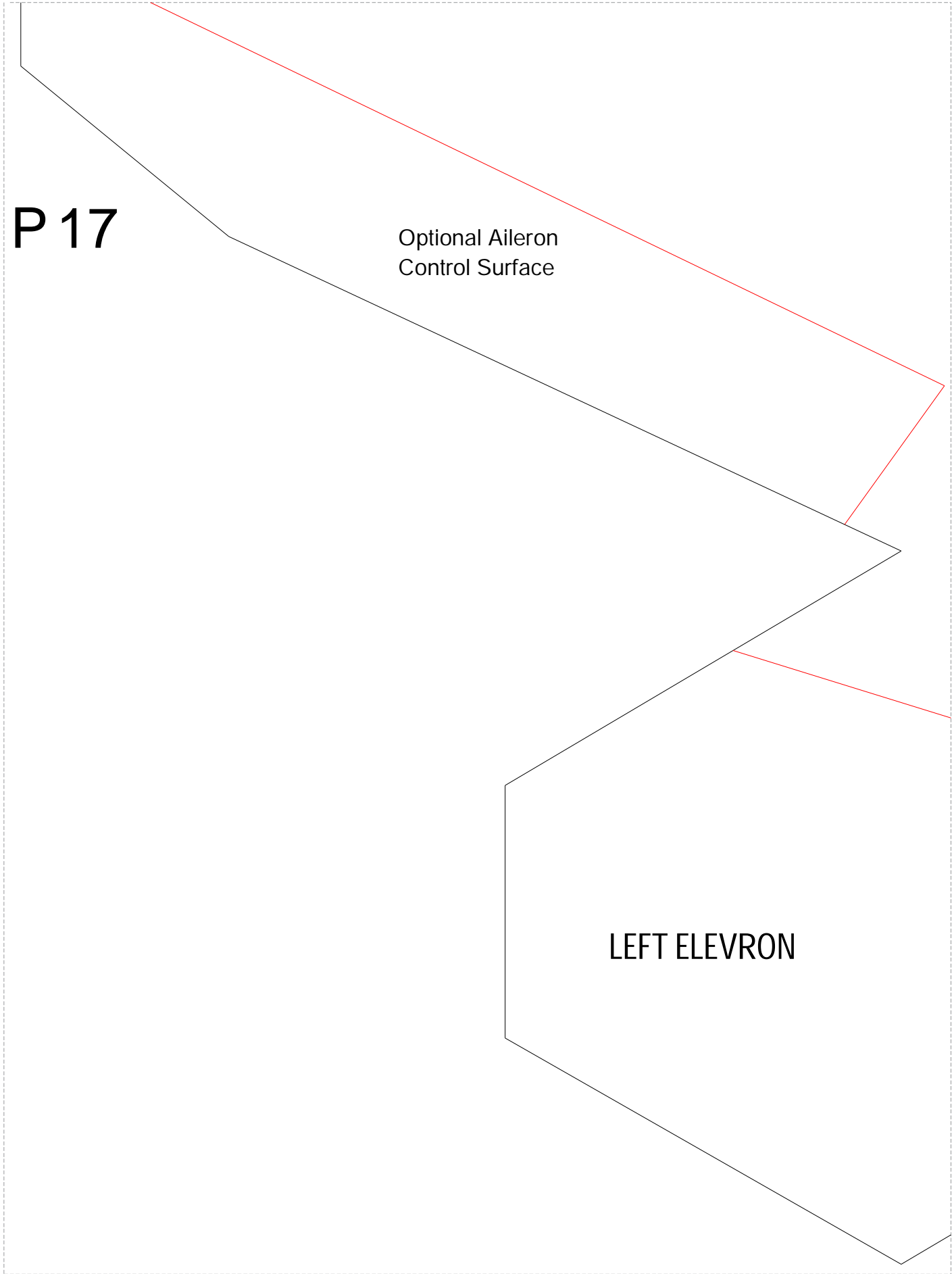


LEFT VERTICAL STABILIZER

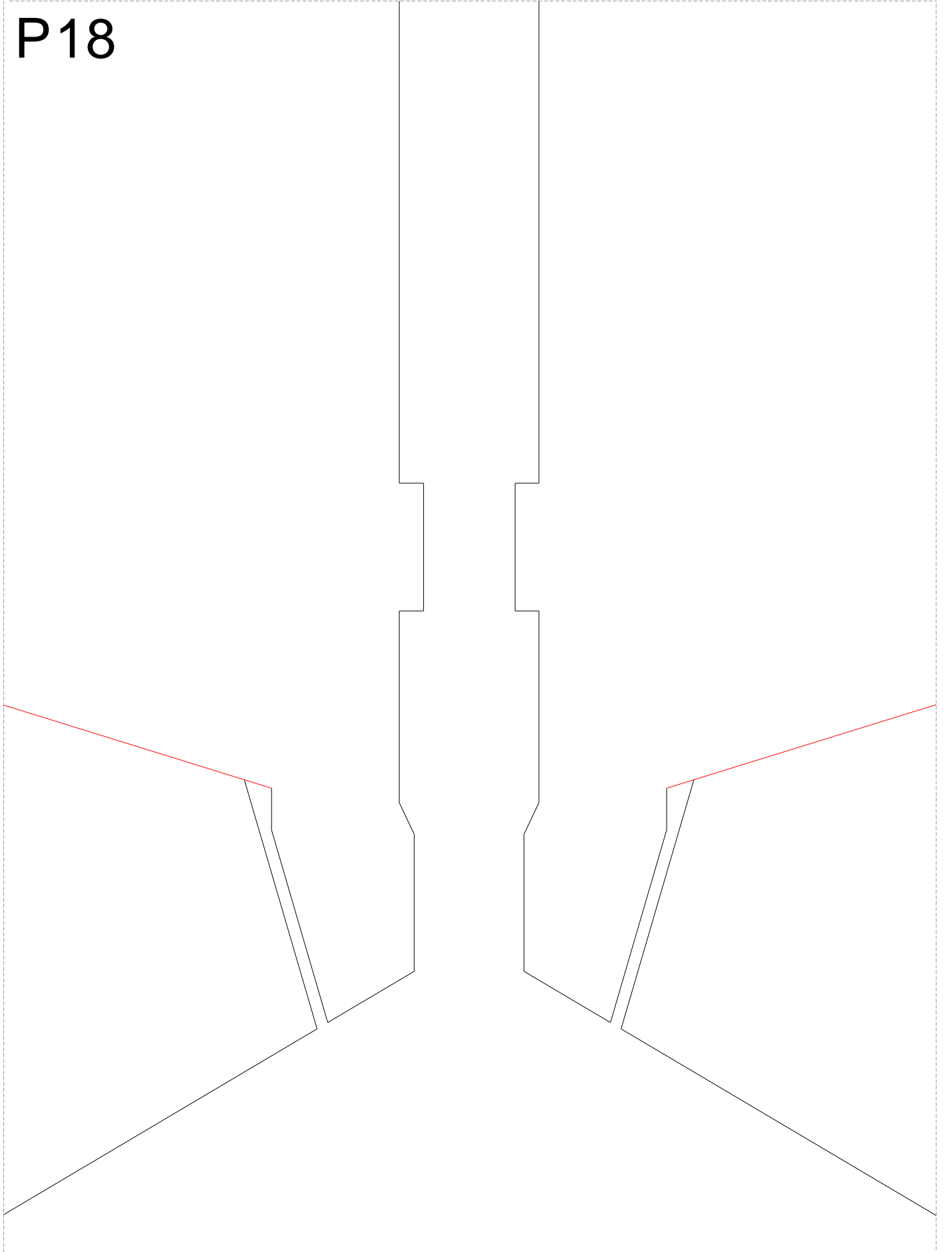
P 17

Optional Aileron
Control Surface

LEFT ELEVON



P18

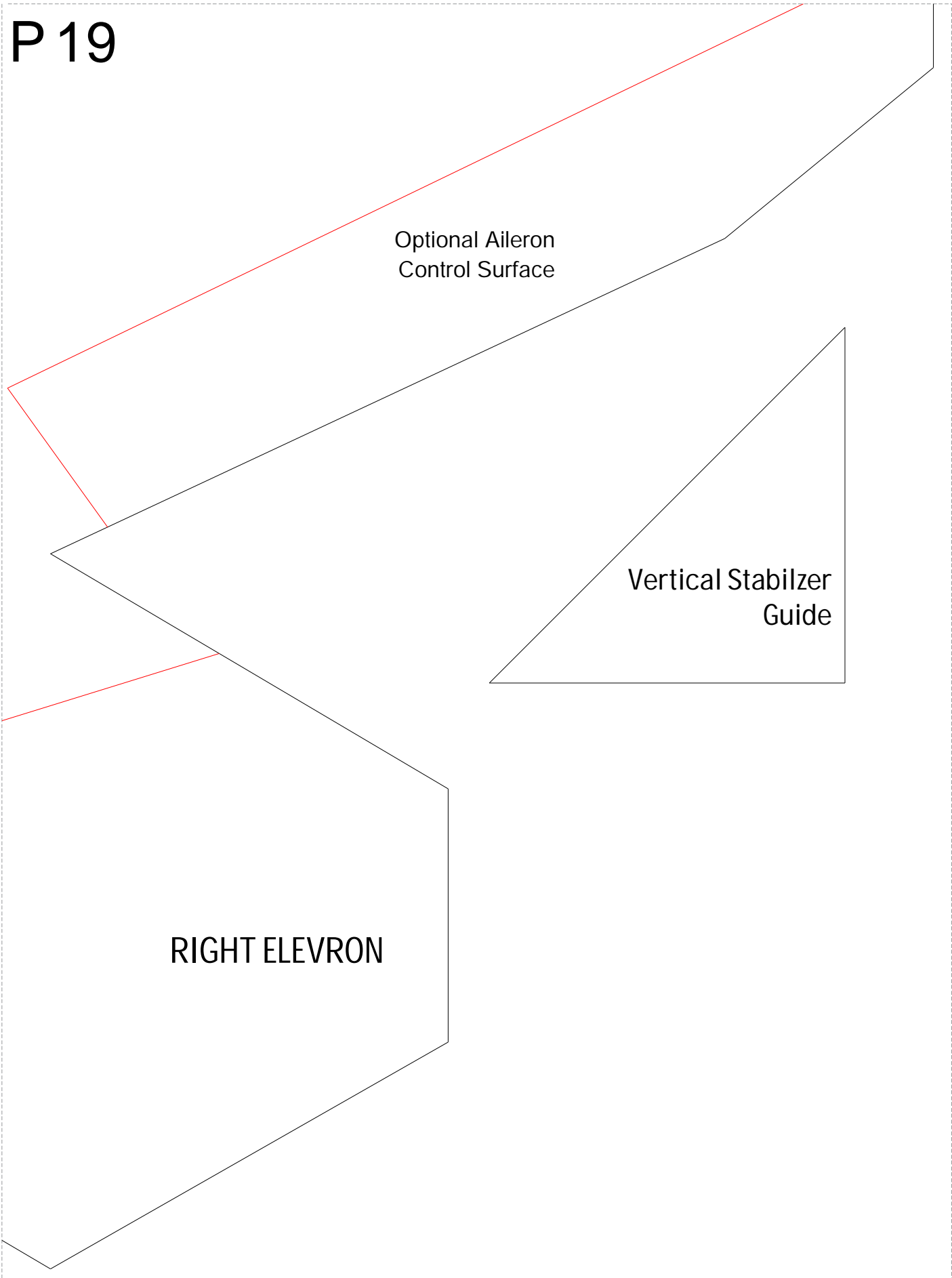


P 19

Optional Aileron
Control Surface

Vertical Stabilizer
Guide

RIGHT ELEVON



Bevel inside cut @45Deg to allow for bending inward.

BOTTOM FUSELAGE PIECE

P 20

Bevel inside @45Deg to allow for bending inward.