

# Become a friend of Roslyn Trails Alliance

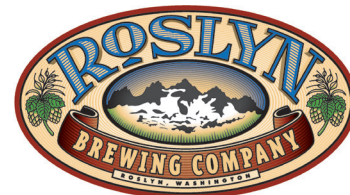
Become a supporter by visiting [www.roslyntrails.com](http://www.roslyntrails.com)  
or email us at [info@roslyntrails.com](mailto:info@roslyntrails.com)



**ROSLYN  
YARD**



**World Famous  
CICELY'S  
GIFT SHOP**  
Established 1989



**kitchensink**  
wonderful things for cooking and entertaining



**Marko's Place**  
(509) 649-2349



425-444-2941  
[www.andrewsandrews.com](http://www.andrewsandrews.com)



**The  
Pastime**

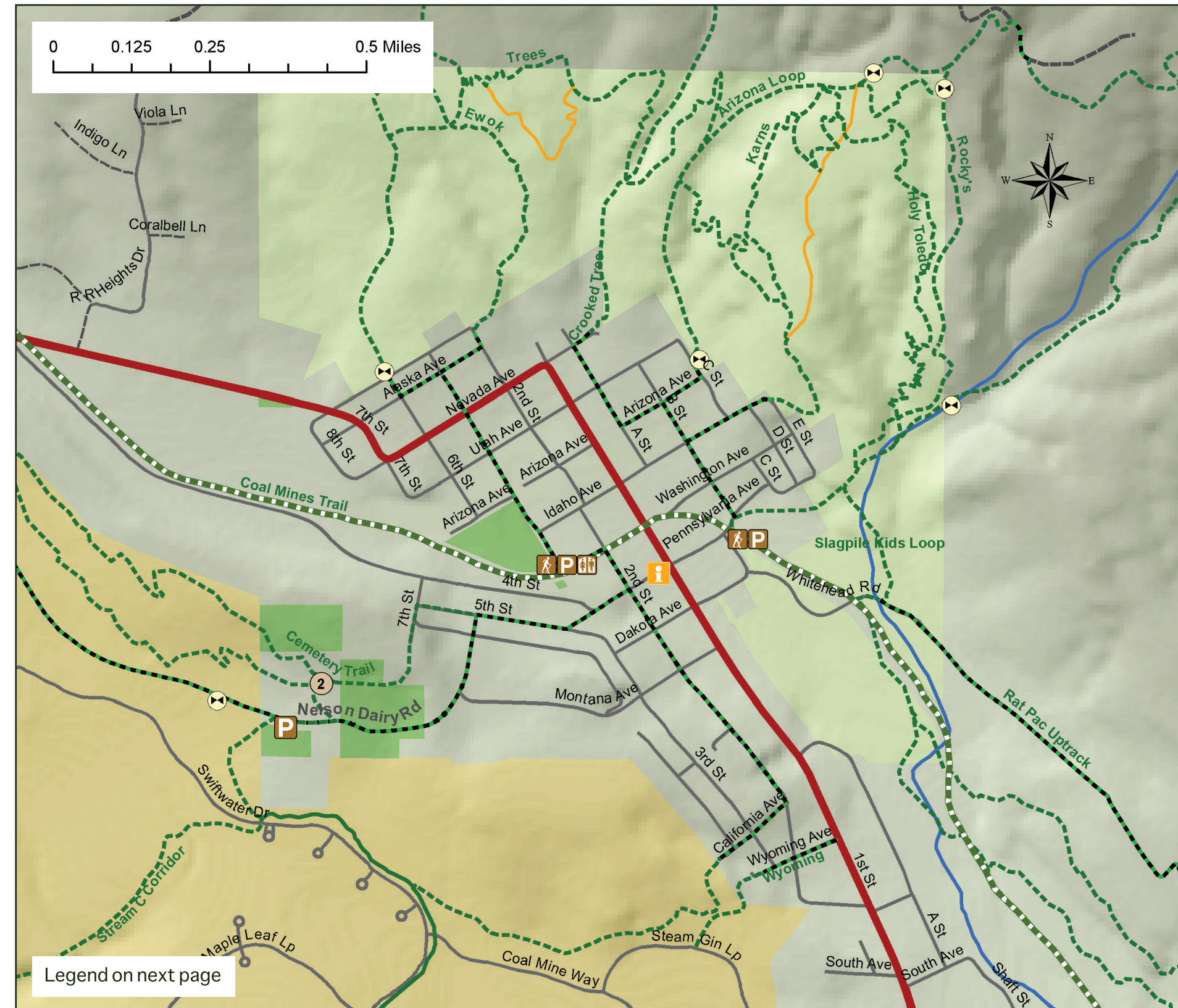


Roslyn Trails Alliance is a volunteer organization composed of hikers, bikers and non-motorized winter sports advocates who build and maintain trails in the Roslyn Area.

Our vision is to create an outstanding trail system that helps make the Roslyn area a great place to live safely connecting us to each other and our remarkable natural surroundings.

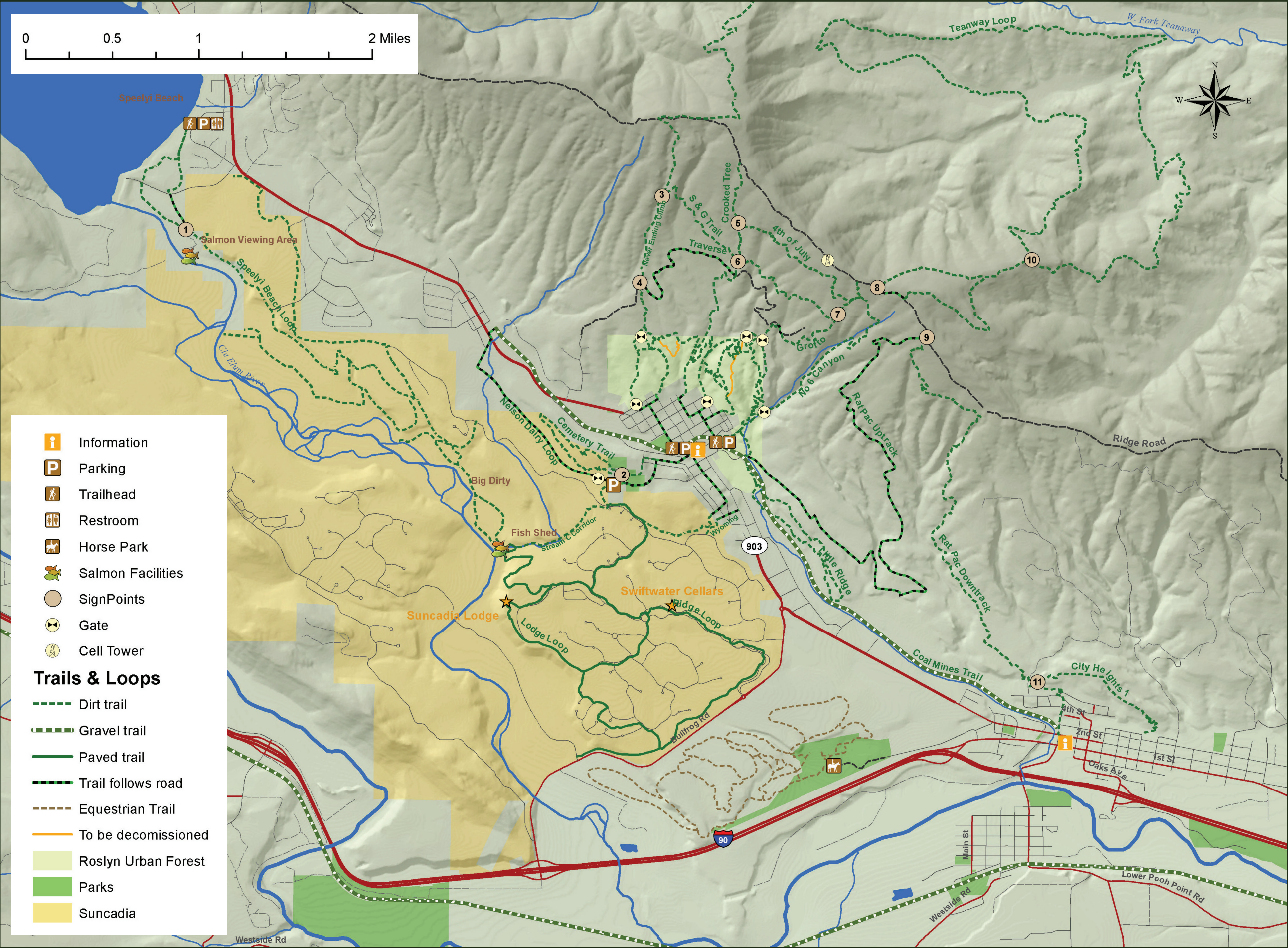


# 2015 Roslyn Community Trail System





# 2015 Roslyn Community Trail System



## Welcome:

This is the second edition of the Roslyn Trails Alliance map. This map is published annually with revisions. As with all maps there are errors of omission and accuracy - some informal user built trails are not reflected on this map and trails depicted may be decommissioned or closed. Your comments and concerns are welcome.

## Trail Data:

GPX and KML files of the Roslyn Trails are available at [www.roslyntrails.com](http://www.roslyntrails.com). Please help up maintain accurate data and trail condition information by emailing your comments to [info@roslyntrails.com](mailto:info@roslyntrails.com).

## Trail Maintenance:

Please join volunteer groups for trail work by checking the RTA website for opportunities and sign up for our newsletter to get involved.

## Private Property:

Many of the trails depicted cross multiple private property lines whose owners have traditionally allowed non-motorized access. Abuse of property, use of motorized vehicles, or other behaviors not in keeping with good land stewardship risks the loss of trail access.

## Safety:

Many of these trails should be considered wilderness. Do not travel unprepared. Be prepared for rapidly changing weather. Bring food, water, and extra clothes at a minimum. Do not count on cell service. Leave your travel plans and expected return time with someone who can initiate a search if you are overdue.

## Parking:

Please park only in designated parking zones at the Coal Mines Trailheads in Roslyn. Respect the residential quality of the trail ends and do not park in residential neighborhoods.

## Motorized Access:

There is NO MOTORIZED VEHICLE ACCESS on any of the trails depicted on these maps. All areas are closed to ORV's. There are excellent motorized access points primarily south of I-90. The LT Murray area at Exit 93 is an outstanding location for dirt bikes and quads.



**BASECAMP  
ROSLYN**

**HIKE - BIKE - SKI**

[www.roslyntrails.com](http://www.roslyntrails.com)  
[info@roslyntrails.com](mailto:info@roslyntrails.com)