

# PAVANE








GAILLARDE

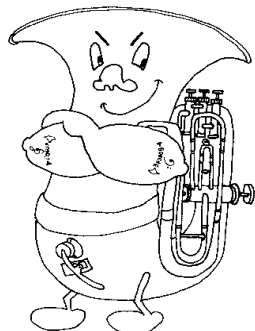
Musique :  
Claude GERVAISE ?

Arrangement :  
Tchi-Tchi

## COMPOSITION

Conducteur 5 voix

- 1 | Trompette Bb  
| Trompette Ut
- 2 | Sax Alto Eb  
| Sax Ténor Bb
- 3 | Euphonium Bb   
| Tuba Ut 
- 4 | Trombone Ut   
| Trombone à pistons Bb 
- 5 | Soubassophone Bb   
| Sax Basse Bb   
| Sax Baryton Eb  
| Contrebasse Ut   
| Guitare Ut



# PAVANE

5 Voix

Musique : Claude GERVAISE ?

CONDUCTEUR

Arrangement : Tchi-Tchi

1

Trompette Bb

Sax Alto Eb

Euphonium Bb

Trombone Ut

Souba Bb

*f-p*

*f-p*

*f-p*

*f-p*

*f-p*

*f-p*

Em Em G D7 G

9

*p-f*

*p-f*

*p-f*

*p-f*

*p-f*

*p-f*

G D7 B7 Em B7 Em

# PAVANE

Voix 1

Musique : Claude GERVAISE ?

TROMPETTES Bb

Arrangement : Tchi-Tchi

1

*f-p*

9

*p-f*

# PAVANE

Voix 1

Musique : Claude GERVAISE ?

TROMPETTES Ut

Arrangement : Tchi-Tchi

1

*f-p*

9

*p-f*

# PAVANE

Voix 2

Musique : Claude GERVAISE ?

SAX ALTO Eb

Arrangement : Tchi-Tchi

1











# PAVANE

Voix 4

Musique : Claude GERVAISE ?

TROMBONE à pistons Bb

Arrangement : Tchi-Tchi

1

*f-p*

9

*p-f*

# PAVANE

Voix 5

Musique : Claude GERVAISE ?

SOUBASSOPHONE Bb

Arrangement : Tchi-Tchi

1

*f-p*

9

*p-f*

# PAVANE

Voix 5

Musique : Claude GERVAISE ?

SAX BASSE Bb

Arrangement : Tchi-Tchi

1

*f-p*

9

*p-f*

# PAVANE

Voix 5

Musique : Claude GERVAISE ?

SAX BARYTON Eb

Arrangement : Tchi-Tchi

1

*f-p*

9

*p-f*

# PAVANE

Voix 5

Musique : Claude GERVAISE ?

CONTREBASSE Ut

Arrangement : Tchi-Tchi

The image shows a musical score for a double bass (Contrebasse) in the key of B-flat major and 3/4 time. The score consists of two staves. The first staff begins with a first ending bracket and a dynamic marking of *f-p*. The second staff begins with a second ending bracket and a dynamic marking of *p-f*. The music is written in bass clef and features a series of eighth and quarter notes, with some notes beamed together. The first staff contains 8 measures, and the second staff contains 8 measures, for a total of 16 measures.

# PAVANE

Voix 5

Musique : Claude GERVAISE ?

GUITARE Ut

Arrangement : Tchi-Tchi

1

Dm Dm F C7 F

*f-p*

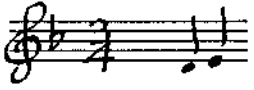
9

F F C7 A7 Dm A7 Dm

*p-f*

# PAVANE

Claude GERVAISE - Arr. Tchi-Tchi



MESURES A 3 TEMPS

32 AABB

A	D <sub>m</sub>	-	F	-	-	C7	F	D <sub>m</sub>
A	-	-	-	-	-	-	F	F
B	F	-	C7	A7	D <sub>m</sub>	A7	D <sub>m</sub>	F
B	-	-	-	-	-	-	D <sub>m</sub>	D <sub>m</sub>