

MOOD INDIGO

FOX TROT

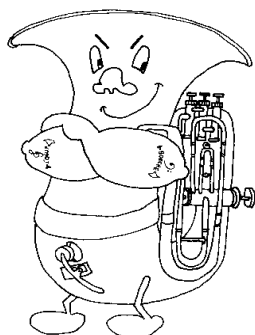
Musique :
Duke ELLINGTON

Arrangement :
J. L'OEUF

COMPOSITION

Conducteur 4 voix

- 1 | Flute Ut
| Trompette Bb
| Sax Alto Eb
- 2 | Trompette Ut
| Clarinette Bb
| Sax Alto Eb
| Sax Tenor Bb
- 3 | Euphonium Bb tr
| Trombone Ut b
- 4 | Soubassophone Bb b
| Sax Basse Bb tr
| Sax Baryton Bb tr
| Contrebasse Ut b
| Guitare Ut



MOOD INDIGO

4 Voix

Musique : Duke ELLINGTON

CONDUCTEUR

Arrangement : J. L'OEUF

Trompette Bb

Clarinete Bb

Tromb/Euph. Bb

Souba Bb

C

C°

C

D7

Gm

G7⁵⁺

C

C

C°

C

D7

A^b7

G7

Dm7

G7

C

G7⁵⁺

C7

F

Fm

G7⁵⁺

C

C°

C

D7

Gm

G7⁵⁺

C

MOOD INDIGO

4 Voix

CONDUCTEUR

chorus ad lib.

17

chorus ad lib.

17

chorus ad lib.

17

chorus ad lib.

17

C C° C D7 Dm7 G7 C

21

21

21

21

C C° C D7 Ab7 G7

25

25

25

25

C C7 F Ab7 G7

29

29

29

29

C C° C D7 Dm7 G7 C

MOOD INDIGO

4 Voix

CONDUCTEUR

Coda

C⁶ C^o C⁶ D7^(b5) B^b7^(b5) G7⁵⁺ C⁶

C⁶ C^o C⁶ D7^(b5) A^b9 E^bm7 A^b7 G13 Dm7 D7⁵⁺ G7

C C G7⁵⁺ C7 C7^(b9) F6 F7M F A^b7 G7⁵⁺

C⁶ C^o C⁶ D7^(b5) B^b7^(b5) G7⁵⁺ C⁶

MOOD INDIGO

Voix 1

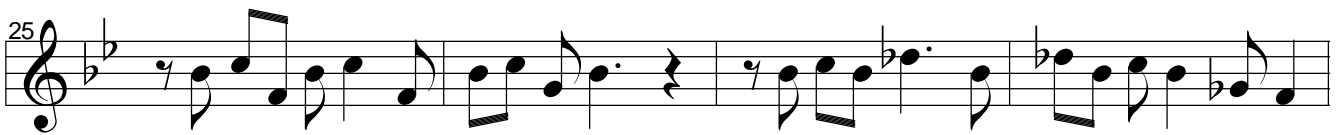
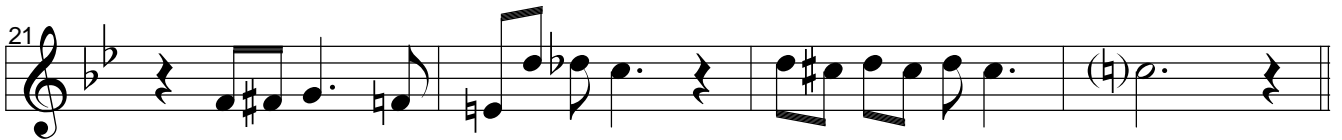
Musique : Duke ELLINGTON

FLUTE Ut

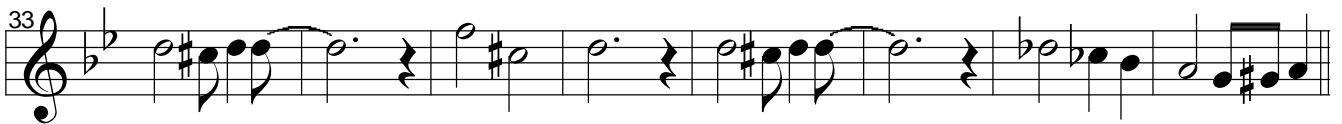
Arrangement : J. L'OEUF



chorus ad lib.



Coda



MOOD INDIGO

Voix 1

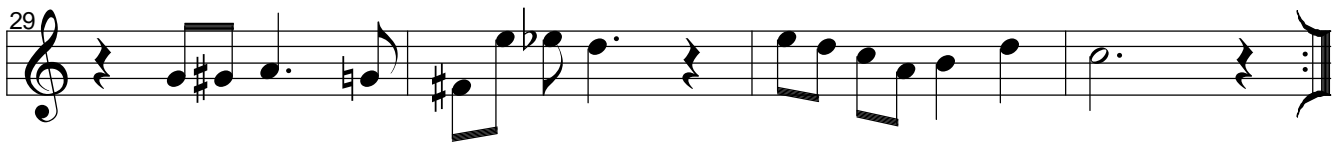
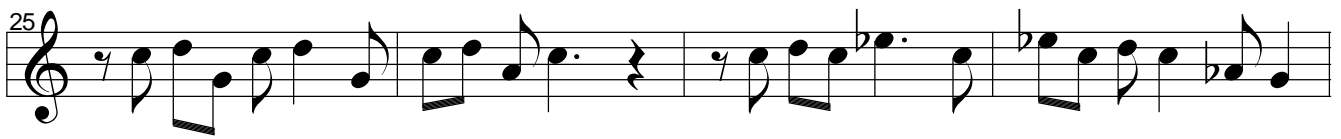
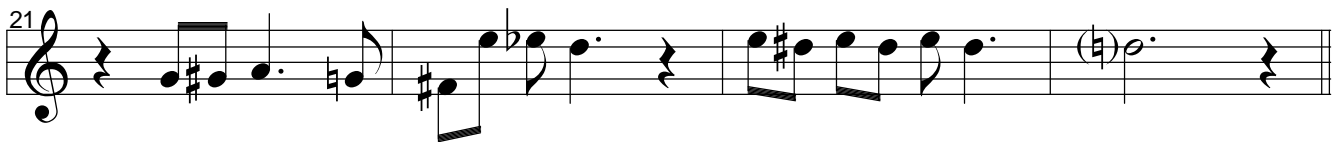
Musique : Duke ELLINGTON

TROMPETTE Bb

Arrangement : J. L'OEUF



chorus ad lib.



Coda



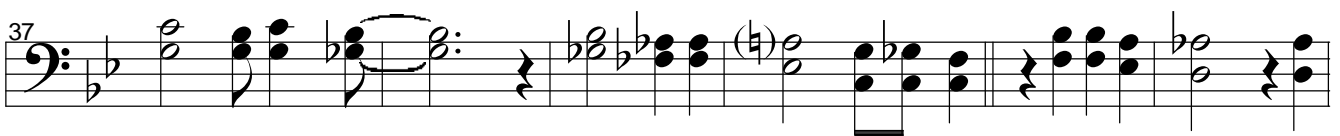
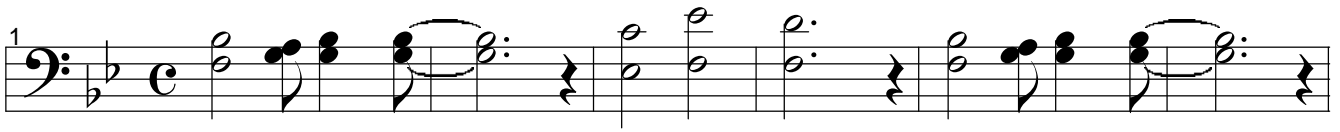
MOOD INDIGO

Voix 3

Musique : Duke ELLINGTON

TROMBONE Ut (Ligne du bas)

Arrangement : J. L'OEUF



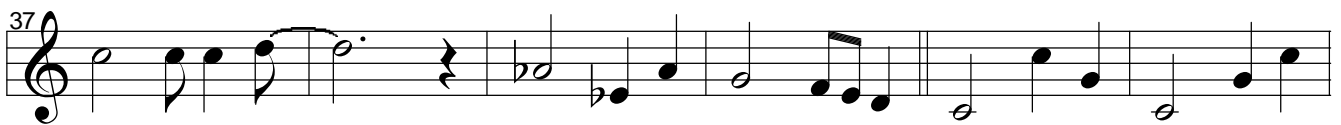
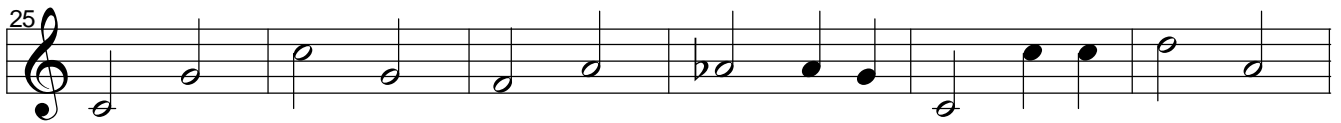
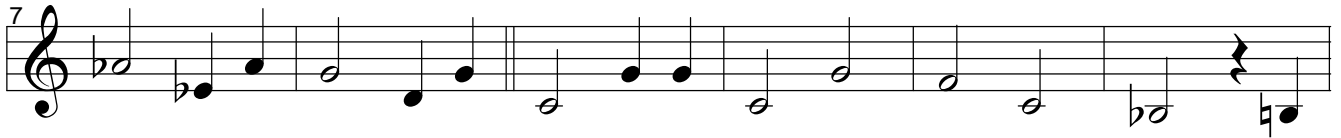
MOOD INDIGO

Voix 4

Musique : Duke ELLINGTON

SAX BASSE Bb

Arrangement : J. L'OEUF



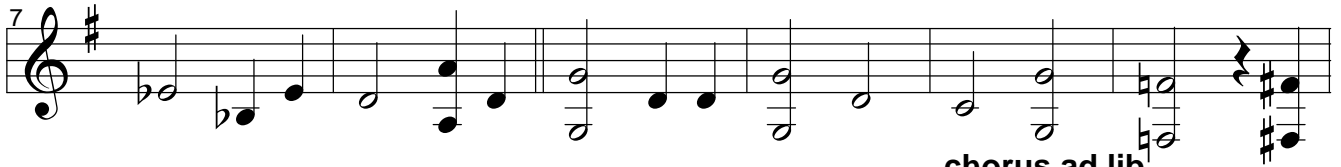
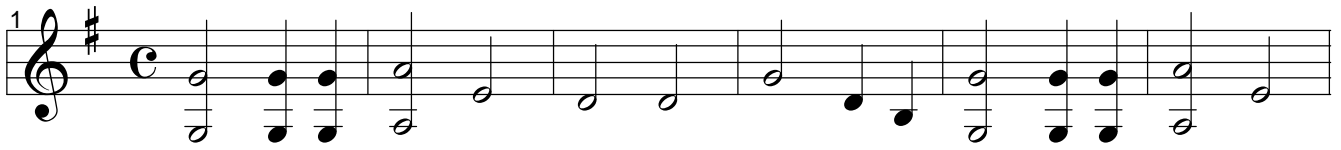
MOOD INDIGO

Voix 4

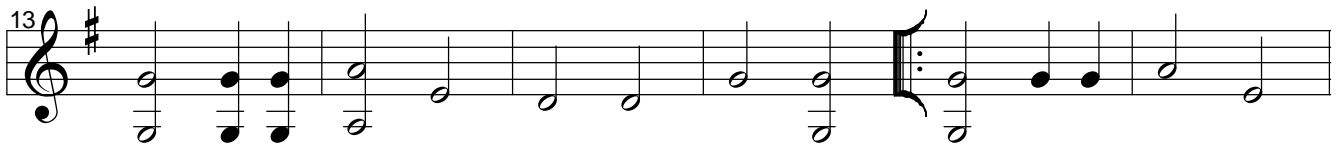
Musique : Duke ELLINGTON

SAX BARYTON Eb

Arrangement : J. L'OEUF



chorus ad lib.



Coda



MOOD INDIGO

Voix 4

Musique : Duke ELLINGTON

GUITARE Ut

Arrangement : J. L'OEUF

1 $B\flat$ $B\flat^\circ B\flat$ $C7$ Fm $F7^{5+}$ $B\flat$

5 $B\flat$ $B\flat^\circ B\flat$ $C7$ $G\flat7$ $F7$ $Cm7$ $F7$

9 $B\flat$ $F7^{5+}$ $B\flat7$ $E\flat$ $E\flat m$ $F7^{5+}$

13 $B\flat$ $B\flat^\circ B\flat$ $C7$ Fm $F7^{5+}$ $B\flat$

chorus ad lib.

17 $B\flat$ $B\flat^\circ B\flat$ $C7$ $Cm7$ $F7$ $B\flat$

21 $B\flat$ $B\flat^\circ B\flat$ $C7$ $G\flat7$ $F7$

25 $B\flat$ $B\flat7$ $E\flat$ $G\flat7$ $F7$

29 $B\flat$ $B\flat^\circ B\flat$ $C7$ $Cm7$ $F7$ $B\flat$

Coda

33 $B\flat_9^6$ $B\flat^\circ B\flat_9^6$ $C7^{(b5)}$ $A\flat_7^{(b5)}$ $F7^{5+}$ $B\flat_6$

37 $B\flat_9^6$ $B\flat^\circ B\flat_9^6$ $C7^{(b5)}$ $G\flat_9$ $D\flat m7$ $G\flat7$ $F13$ $Cm7$ $C7^{5+}$ $F7$

41 $B\flat$ $B\flat F7^{5+}$ $B\flat7$ $B\flat_7^{(b9)}$ $E\flat_6$ $E\flat_7 m$ $E\flat$ $G\flat7$ $F7^{5+}$

45 $B\flat_9^6$ $B\flat^\circ B\flat_9^6$ $C7^{(b5)}$ $A\flat_7^{(b5)}$ $F7^{5+}$ $B\flat_9^6$

MOOD INDIGO

Duke ELLINGTON - 1930

THEME

16 AA'BA

B^b B^b o B^b	$C7$	F^m $F7^{5+}$	B^b	B^b B^b o B^b	$C7$	G^b7	$F7$ C^m7 $F7$
B^b $F7^{5+}$	B^b7	E^b	E^b_m $F7^{5+}$	B^b B^b o B^b	$C7$	F^m $F7^{5+}$	B^b

CHORUS

16 AA'BA

B^b B^b o B^b	$C7$	C^m7 $F7$	B^b	B^b B^b o B^b	$C7$	G^b7	$F7$
B^b	B^b7	E^b	G^b7 $F7$	B^b B^b o B^b	$C7$	C^m7 $F7$	B^b

THEME CODA

16 AA'BA

$B^b_6^9$ B^b o $B^b_6^9$	$C7^{5b}$	$A^b_7^{5b}$ $F7^{5+}$	B^b_6	$B^b_6^9$ B^b o $B^b_6^9$	$C7^{5b}$	G^b_9 D^b_m7 G^b_7	F^{13} C^m7 $F7$
B^b $F7^{5+}$	B^b7 9^b	E^b_6 7^m E^b	G^b7 $F7^{5+}$	$B^b_6^9$ B^b o $B^b_6^9$	$C7^{5b}$	$A^b_7^{5b}$ $F7^{5+}$	$B^b_6^9$ B^b_6