

Schedules and Maps

Effective November 16, 2015



Hours of Operation: M-F, 6am-6pm

Buses depart from the County Office Building on Central Ave. Buses utilize flag stops; signal the driver with your hand to stop the bus for a pickup.

Fares

Routes 1 - 4	\$1.50	(reduced fare \$0.75)
Routes 5, 6, 8-15	\$2.00	(reduced fare \$1.00)
Route 7	\$5.00	(reduced fare \$2.50)
Monthly pass (all but Rte. 7)	\$45.00	
Monthly pass (incl. Rte. 7)	\$85.00	

Children under the age of 5 ride free with adult.
 Limit 3 per adult

Route Deviation
 Deviations (within 3/4 mile of the route) are available on all routes but only available on runs leaving at the top of the hour on Routes 1-4.

The charge for a deviation is double the regular fare.

Deviation charge applies to monthly pass users.



ROUTE 6

LOCATION	AM	AM	PM	PM	PM
Co. Office Building	6:45	8:30	12:00	2:50	4:45
TC3	7:10	8:55	12:25	3:15	5:10
Dryden Bus Stop	7:15	9:00	12:30	3:20	5:15
Co. Office Building	7:40	9:25	12:55	3:45	5:40

ROUTE 7

LOCATION	AM	PM
Riverside Plaza Park and Ride	7:00	----
County Office Building	7:05	4:00
Cortlandville Park and Ride	7:12	----
Cortland SUNY Campus Library	----	4:05
East Hill Plaza	----	4:32
Vet Building (Cornell Campus)	7:41	4:40
Rice Hall	7:44	4:43
Kennedy Hall	7:47	4:46
Sage Hall	7:50	4:50
East Hill Plaza	7:54	----
Cortland SUNY Campus Library	8:25	----
Cortlandville Park and Ride	----	5:25
County Office Building	8:30	5:30
Riverside Plaza Park and Ride	----	5:35

ROUTE 1

HOLIDAY CLOSINGS: New Year's Day, Memorial Day, July 4th, Labor Day, Thanksgiving Day, Christmas Day

REDUCED FARES
PERSONS WITH DISABILITIES
 Persons with disabilities may be entitled to a fare discount on fixed routes. To receive your discount, you must display a Half-Fare Card each time you board the bus. To obtain a card, please call 758-3383. You will need to provide proof of SSI/SSD, or a copy of Veterans Affairs Benefits for veterans with disabilities. All buses are wheelchair accessible.

SENIOR CITIZENS
 If you are 60 years of age or older you can ride half fare on fixed routes. To receive a discount, you must display a half-fare card or a photo ID with your birth date each time you board.
 Youth - Under 18 years of age - Eligible for reduced fare

SUGGESTIONS/PROBLEMS
 Cortland Transit prides itself on providing the highest quality service to the public. All operating personnel are trained professionals with an eye toward attitude, appearance, and performance. If you encounter any difficulty, have complaints, or have lost/found an item on the bus, please call us.

DIAL-A-RIDE

Cortland Transit operates a Dial-a-Ride system, a curb-to-curb service. Residents wishing to access the service must call 607-758-3383 at least 1 day in advance. Fares are a minimum of \$5 and a maximum of \$6, one way. Please call if you need to cancel a ride. Don't be late! If you delay more than 3 minutes, the driver is instructed to continue

on so other riders will not have to wait. Reduced fares apply with half-fare card.

FLEX ROUTES (ROUTES 8-15)
 Flex routes run twice per day. Estimated schedules and maps are available at www.way2gocortland.org

MONTHLY PASSES
 Monthly passes, available at Cortland Transit offices and the Daily Grind, must be displayed each ride and remain in your possession for the entire trip.

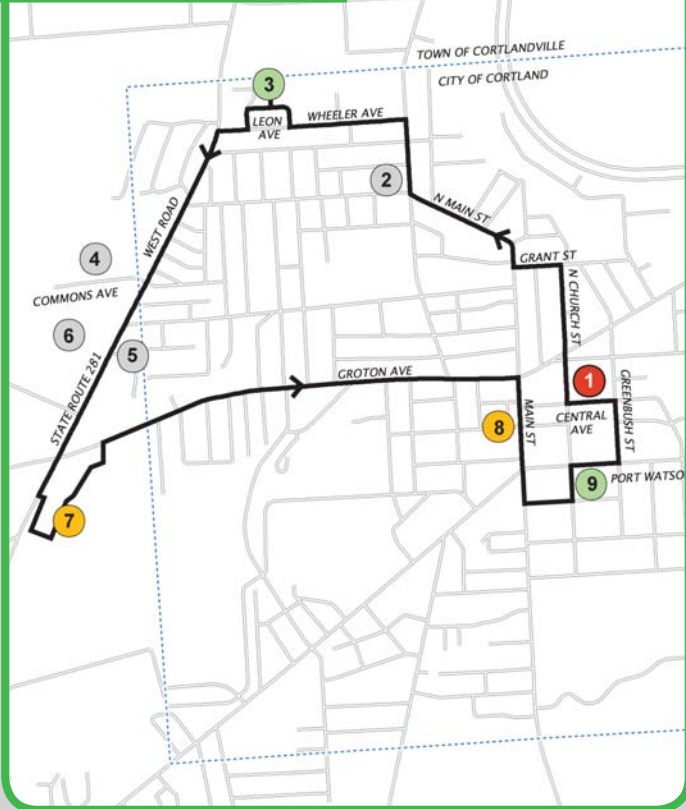
Cortland Transit is committed to providing non-discriminatory service to ensure that no person is excluded from participation in, or denied the benefits of, or be subjected to discrimination in the receipt of its services on the basis of race, color, or national origin as protected by Title VI of the Civil Rights Act of 1964 ("Title VI"). To request additional information about Title VI, or if you believe you have been subjected to discrimination and would like to submit a written complaint, you may contact: Dan Dineen, Cortland County Planning Department, 37 Church Street, Cortland, NY 13045.

LOCATION	Departs on the	
	Hour	1/2 Hour
County Office Building	:00	:30
Pomeroy School Apartments	:15	:45
Riverside Plaza	:23	:53
arrives County Office Building	:27	:57

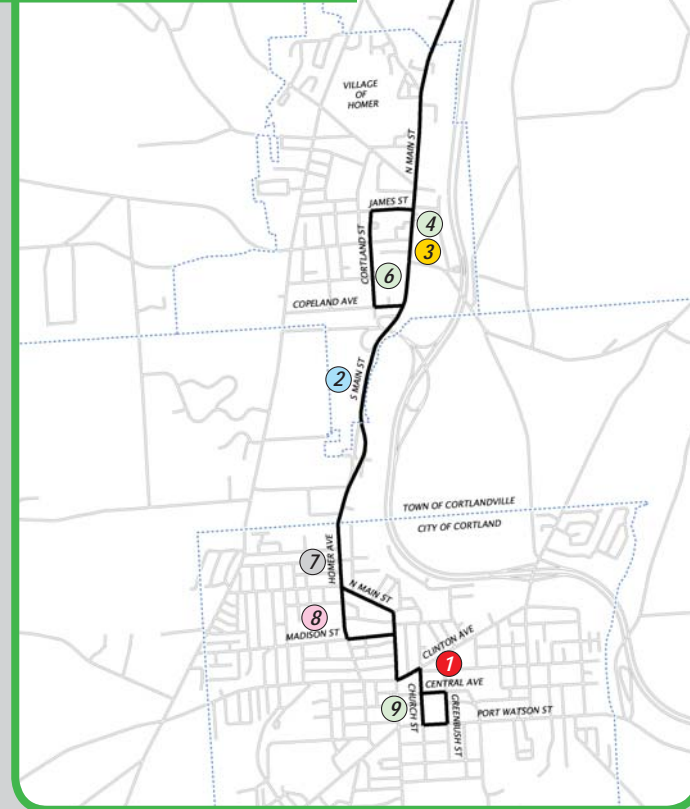
- Points of Interest**
- County Office Building (:00 / :30)
 - Cortland Free Library
 - YWCA
 - TC3 Extension Center
 - Marietta Corporation
 - Cortland Jr/Sr High School
 - Crown Center
 - Cortland Alternative School (OCM BOCES)
 - Pomeroy School Apartments (:15 / :45)
 - Ramada
 - OCM BOCES (Route 13)
 - Riverside Plaza (:23 / :53)
 - Cortland Park Apartments
- Route 1 will stop as requested along Kennedy Parkway & Port Watson Commons*

County Office Building	Employer	Shopping
Educational	Medical	Recreational

ROUTE 2



ROUTE 3



ROUTE 4



ROUTE 5



Routes 5 through 15 operate only at certain times of the day. Please note all time points are estimates. Riders should arrive early to ensure they will catch the bus & arrive at their destination on time.

Questions? Call 607-758-3383.

LOCATION	Departs on the	
	Hour	1/2 Hour
County Office Building	:00	:30
Friendship House	:09	:39
Tops Plaza	:17	:47
arrives County Office Building	:27	:57

Points of Interest

1. County Office Building (:00 / :30)
2. Cortland Regional Medical Center
3. Friendship House (:09 / :39)
4. Commons Ave. (Medical Offices)
5. Family Health Network
6. Employment Connection / JM Murray Center
7. Tops Plaza (:17 / :47)
8. Downtown - Main Street
9. 51 Port Watson (Housing Complex)

Route 2 will stop as requested at the Dialysis Center, Family Health Network, and on Commons Ave.

All time points are approximations. To flag a bus for pickup, signal the driver by waving your hand from a visible location along the route.

LOCATION	Departs on the	
	Hour	1/2 Hour
County Office Building	:00	:30
Ellis Pines Senior Housing	:15	:45
42 Church Street (Complex)	:24	:54
arrives County Office Building	:27	:57

Points of Interest

1. County Office Building (:00 / :30)
2. Albany International
3. Village of Homer - Main Street
4. Elizabeth Brewster House
5. Pine Hill Mobile Home Park
6. Ellis Pines Senior Housing (:15 / :45)
7. Cortland Regional Medical Center
8. Suggett Park
9. 42 Church Street (Housing Complex) (:24 / :54)

Route 3 will make the following stops as requested:

- Homer Senior Center
- Euclid Avenue Medical Center
- Cortland Health Center (Fisher Ave.)
- Cortland Regional Nursing & Rehabilitation Center

LOCATION	Departs on the	
	Hour	1/2 Hour
County Office Building	:00	:30
College Suites	:07	:37
Walmart	:15	:45
arrives County Office Building	:27	:57

Points of Interest

1. County Office Building (:00 / :30)
2. YMCA
3. College Suites (:07 / :37)
4. JM Murray Center
5. Walmart (:15 / :45)
6. Cortlandville Crossing Center
7. Lowe's
8. Cortland Transit Offices

Route 4 will make the following stops as requested:

- JM Murray Center Parking Lot
- Cortland Transit Offices

Routes 1 through 4 depart the County Office Building (Central Avenue) every 30 minutes on the hour and half-hour. Buses operate from 6am to 6pm, Monday through Friday.

FOR MORE INFORMATION, CALL 607-758-3383

LOCATION	Departs on the			
	AM	AM	PM	PM
County Office Building	6:00	7:30	2:30	4:00
Polkville	6:04	7:34	2:34	4:04
McGraw	6:07	7:37	2:37	4:07
Solon	6:09	7:39	2:39	4:09
E. Freetown	6:15	7:45	2:45	4:15
Lower Cincy	6:23	7:53	2:53	4:23
Rural Services	6:26	7:56	2:56	4:26
Willet-Four Corners	6:34	8:05	3:05	4:34
Marathon	6:44	8:15	3:15	4:44
Blodgett Mills	6:58	8:28	3:28	4:58
Polkville	7:00	8:30	3:30	5:00
McGraw	7:04	8:34	3:34	5:04
Polkville	7:10	8:40	3:40	5:10
County Office Building	7:15	8:45	3:45	5:15



For all your transportation needs, including info about walking, biking, driving, public transit, taxis, and more, call 607-756-4198 or check out:

www.way2gocortland.org