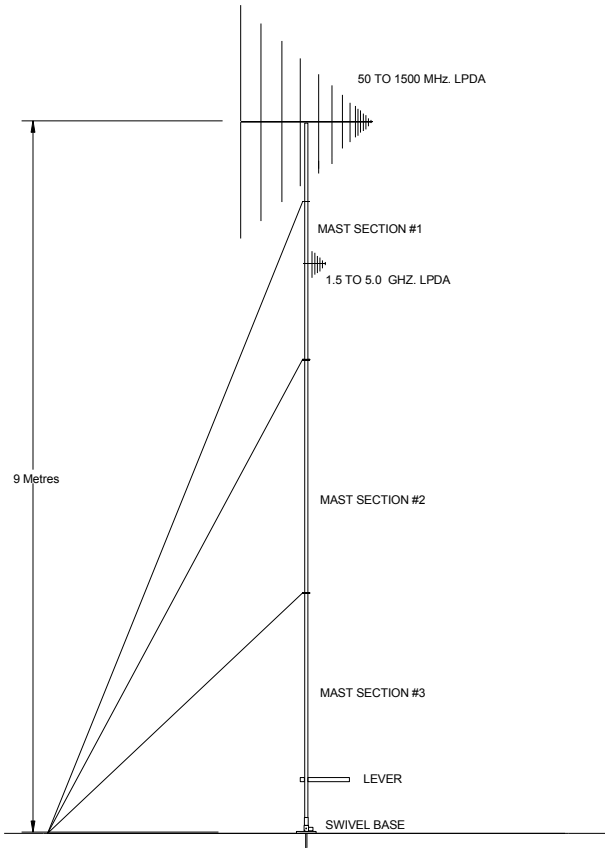


Type BRX5000

Directional Broadband 50MHz to 5000MHz receiving antenna system

The BRX5000 is designed to provide wideband directional reception of radio signals from VHF through to the SHF bands. Output is provided via two 50Ω coaxial outputs in two frequency ranges: 50-1500 MHz and 1500-5000 MHz.



The main construction is from marine grade aluminium, nylon and stainless steel. It is supplied in sections as a semi-knockdown kit, which, when together, forms a 9.5m section complete with RF transparent guy ropes. Mounting is either over the ground or on a roof top via the swivel base mount, plate and spike and is easily achieved with two men and the use of the optional gin pole to “swing it up”. No special tools are needed. The system is supplied with comprehensive assembly instructions.

The principle of operation is that of a directional wideband system comprising two separate log periodic array antennas which can be swivelled through 90 degrees allowing horizontal, vertical or slant polarisation to be selected prior to erection. The complete mast and antenna assembly can be rotated manually through 360° whilst erected.

- . 50-1500MHz: A log periodic array which has removable elements, the longest of which is 1.5 metres with a boom length of 2 metres.
- . 1500-5000MHz: A log periodic array of very compact dimensions with a boom length of 500mm and a longest element of 200mm. Connection is via the antenna interface unit which provides 50Ω coaxial outputs for each of the frequency ranges.

Standard colour is drab olive (other colours to order). An erection kit which includes a gin pole and four triangular guy stakes is available as an option.

Specifications

Frequency Range	50 to 5000 MHz
Bands	50-1500 MHz; 1500-5000MHz
Impedance (output)	50Ω (nominal)
Gain	10dBi (nominal)
Connection	N type coaxial connectors
Polarisation	Vertical, horizontal or slant (adjustable)
Directionality	System may be rotated 360°
Overall Length	9.8m (33ft)
Wind Survival	160 km/h (100mph)
Guy System	3 sets (RF transparent guys)
Guy Radius	5m (20ft) recommended
Base Mount	Special ground plate, spike and swivel mount
Total Weight (approx)	40kg (88 lbs) antenna system and mount; 53kg (116.6 lbs) packed

Specifications subject to change 9/01