

## CAT5/CAT6 KVM extender

Extends keyboard, video, mouse, audio and serial up to 1,000' over CAT5/6 cable

Video resolutions up to 1600 x 1200

Supports PC, serial, and audio

Video tuning is made easy with simple keyboard commands

Skew compensation to support CAT5, CAT5e, and Cat6 cable

Available in single, dual or quad video

## Features and Benefits

- Single, dual, or quad video models available
- Video resolutions up to: 1600 x 1200 @ 60Hz (650')  
1280 x 1024 @ 75Hz (1000')
- Integrated skew adjustments for compensating different CATx cable types
- Independent low and high frequency equalization adjustments
- All control and video adjustments are easily made with simple keyboard commands
- Audio options:
  - Full stereo audio can be transmitted either direction across the link (simultaneously)
  - Digital CD quality audio
  - Supports stereo speakers and microphone
- Serial option:
  - Supports serial baud rates up to 19.2 baud
  - Supports Transmit, Receive, and two hardware handshaking lines
- Full keyboard and mouse emulation
- Compatible with Rose Electronics KVM switches
- Compatible with Windows, UNIX, Linux, and other operating systems
- All settings stored in flash memory
- Rackmount kits available in 19", 23", or 24" sizes

## The CrystalView™ Plus Advantage .

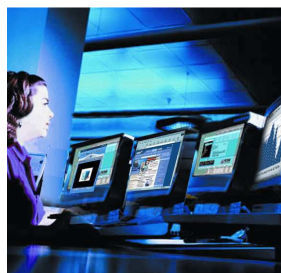
The CrystalView Plus series of enhanced KVM extenders allow you to position your KVM station up to 1,000 feet (300 meters) away from your computer using a single CATx cable. If your computer supports dual or quad video, the CrystalView Plus dual or quad model can fully support it.

The CrystalView Plus has gone one step further and eliminated adjustment knobs and jumper switch settings. Integrated controls that adjust for skew, low and high frequency equalization, and RGB delay for each channel have been made easy by simple keyboard commands.

Each channel (single, dual, or quad) can be adjusted independently or global settings can be applied for all. These adjustments make for a crystal clear image using CAT5, CAT5e, or CAT6 cabling.

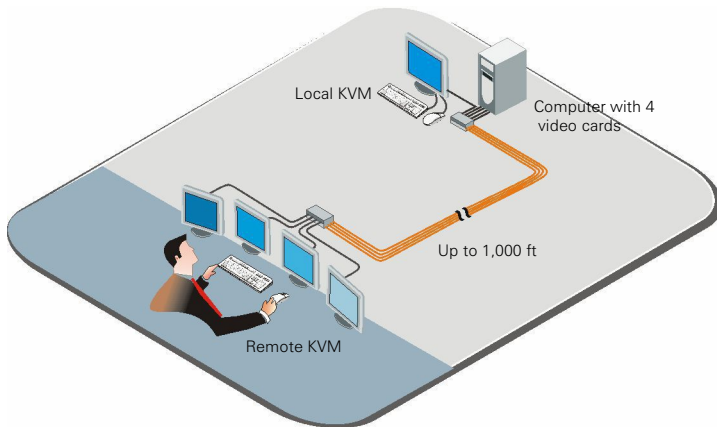
The stereo audio option produces low-noise CD quality sound. Speakers, headphones, or a powered or un-powered microphone can be connected to the remote unit. It's perfect for call centers, trader's desks, kiosks, TV stations, and other applications where multiple video sources are used and need to be extended from the computer.

The bi-directional serial option allows you to connect a touchscreen, digital tablet, serial printer or other supported serial device to the remote location. No set-up is needed; just connect the serial device to the serial port and it's ready to use.



View single, dual, and quad video  
1,000 feet away

## Typical Application



View 4 video sources

**Overview** The CrystalView Plus series CATx KVM extenders are usually sold in pairs, a local unit and a remote unit. The local unit connects to your computer or KVM switch and the remote unit connects to a keyboard, monitor, and mouse. The Local and remote unit are connected together with standard CAT5, CAT5e, or CAT6 cable. To compensate for these different cable types, the CrystalView Plus has a built-in RGB compensator that can incrementally adjust the red, green, and blue color delay in 2.8ns increments. This and the skew compensation provide for a crystal clear image using any CATx type cable. All configuration and video tuning is performed using simple keyboard commands from the remote unit.

**Installation** Installing the CrystalView Plus is as simple as connecting the computer or KVM switch to the local unit, a KVM station to the remote unit and connecting the local and remote units together with CATx cable. Using standard CAT5 cable, no compensation, or very little is needed. If you're using other than CAT5 cable or several patch panels, some compensation may be needed. This is easily done using simple keyboard commands.

**Extending to a Rose switch** In addition to extending a KVM station from a computer, you can also connect the local unit to a KVM switch providing access up to 1,000 computers.

**Local access features** The single and dual video models offer an additional KVM station on the local unit providing both local and remote unit access.

## Part Numbers

CRK-1P1V	PS/2 KVM Extender kit, Single video
CRK-1P2V	PS/2 KVM Extender kit, Dual video
CRK-2P1V	Single video, local/remote access
CRV-SL2	Dual video, local KVM extender
CRV-R1V	Single video, remote KVM extender
CRV-R2V	Dual video, remote KVM extender
CRV-R4V	Quad video, remote KVM extender
/AUD suffix	Audio & Serial option
RM-BR1	Rack Mount brackets for: CRV-SL1, CRV-SL1/AUD CRV-DL1, CRV-DL1/AUD
RM-BR3	Rack Mount shelf for: CRV-R1V, CRV-R1V/AUD CRV-R2V, CRV-R2V/AUD CRV-R4V, CRV-R4V/AUD CRV-SL2, CRV-SL2/AUD

Note: CRK part numbers consist of a local unit and a remote unit

## Specifications

Dimensions	Width	Depth	Height	Weight
CRK-1P1V/2P1V (in)	7.76	3.94	1.38	2.20 lbs
(mm)	197	100	35	1.0 kg
CRK-1P1V/2P1V (in) with audio	7.76	3.94	1.73	2.87 lbs
(mm)	197	100	44	1.3 kg
CRK-1P2V (in)	4.33	5.75	1.14	1.76 lbs
(mm)	110	146	29	0.8 kg
CRK-1P2V (in) with audio	4.33	5.75	1.73	2.65 lbs
(mm)	110	146	44	1.2 kg
CRV-R1V/R2V (in)	5.51	5.71	1.14	2.65 lbs
(mm)	140	145	29	1.2 kg
CRV-R1V/R2V (in) with audio	5.51	5.71	1.73	2.87 lbs
(mm)	140	145	44	1.3 kg
CRV-R4V (in)	10.8	5.71	1.14	3.75 lbs
W / wo audio (mm)	275	145	29	1.7 kg

Resolution	1600 x 1200 (60Hz) @ 650' 1280 x 1024 (75Hz) @ 1,000'
Skew	2.8ns steps / 42ns max/color
Connectors	Keyboard / Mouse – PS/2 – miniDin6 Video – HD15M/F Interconnect – RJ45 Serial – DB9M/F Audio – 3.5mm stereo jack Remote – 9.0VDC adapter Local – Supplied from CPUs
Power	Remote – 9.0VDC adapter Local – Supplied from CPUs
Approvals	FCC-A, CE



Rear view Local units (Single / Dual)



Rear view Remote units (Single / Dual / Quad)