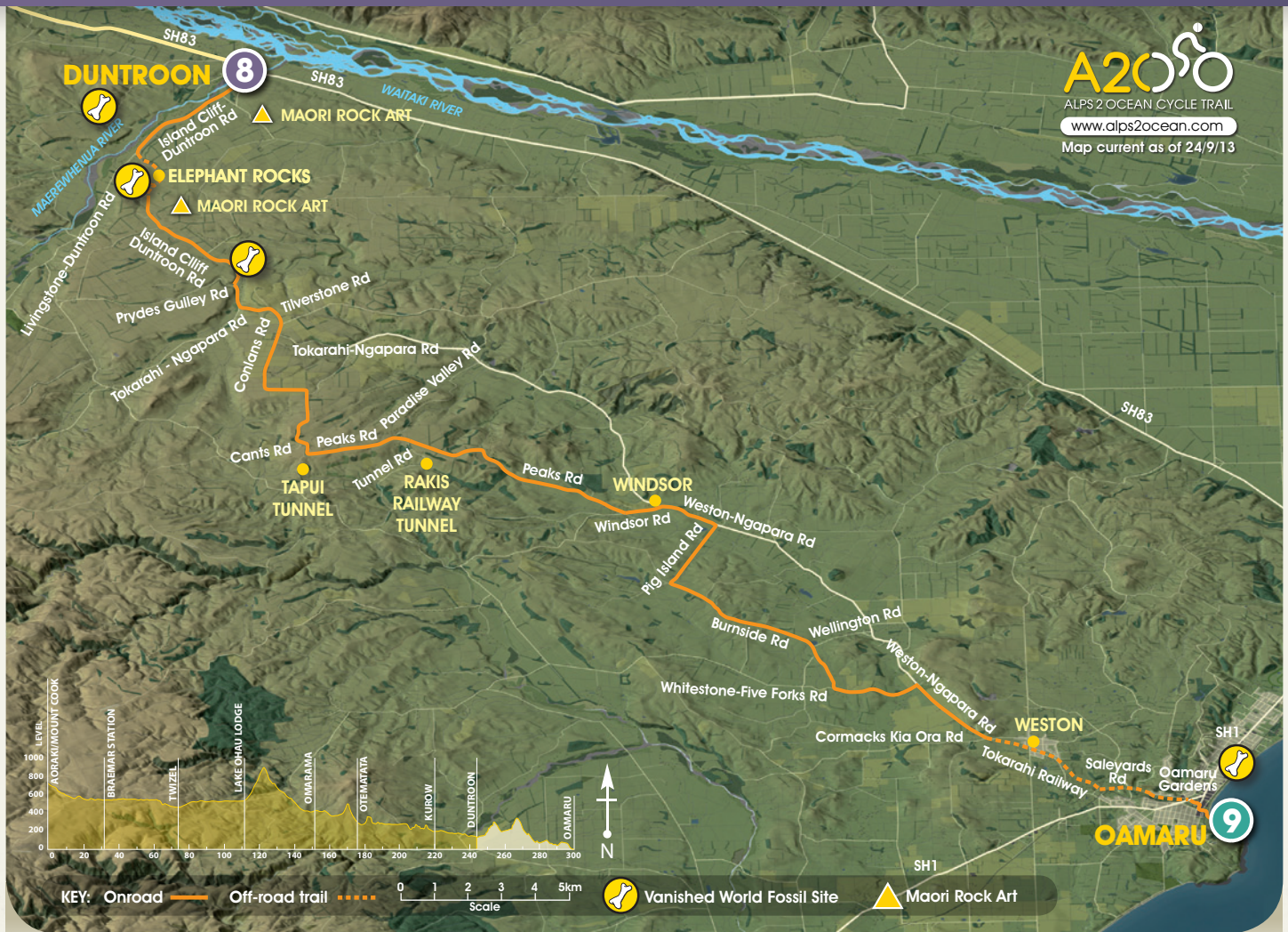




SECTION 8: Duntroon to Oamaru

FITNESS: Intermediate . SKILL: Easy . TRAFFIC: High . GRADE: 3



From Duntroon the trail passes through the limestone and rock formations known as 'Elephant Rocks' [6.4km]. The trail then connects with quiet country roads to take you through to Weston. From here you rejoin the old railway line and continue to Saleyards Road. Proceed along the sealed cycleway until you enter the Oamaru Gardens. Bike through the gardens, passing the Aquatic Centre to the Main Street (Thames Street). Turn right on Thames Street, then past the i-SITE, turning left on Ichen Street. Follow the historic trail to the Oamaru Harbour where the trail ends at Friendly Bay, adjacent to the Victorian Historic Precinct.

TRAIL IS UNDER CONSTRUCTION.



Trail route and weather conditions subject to change. Please check website before daily departure.

Highlights:

- Elephant Rocks
- Vanished World Fossil Sites
- Maori Rock Art Sites
- Historic Tokarahi Branch Rail Line
- Historic Rakis & Tapui Sandstone Block Tunnels
- Oamaru Historic Victorian Precinct
- Oamaru Blue Penguin Colony
- Steampunk HQ
- North Otago Museum
- Oamaru Gardens

Trail Surfaces:



Sealed Road (47%)



Smooth Shingle (9%)



Gravel Road (44%)



Dirt (less than 1%)



FOR MORE INFORMATION PLEASE GO TO: www.alps2ocean.com