

# Valiant®

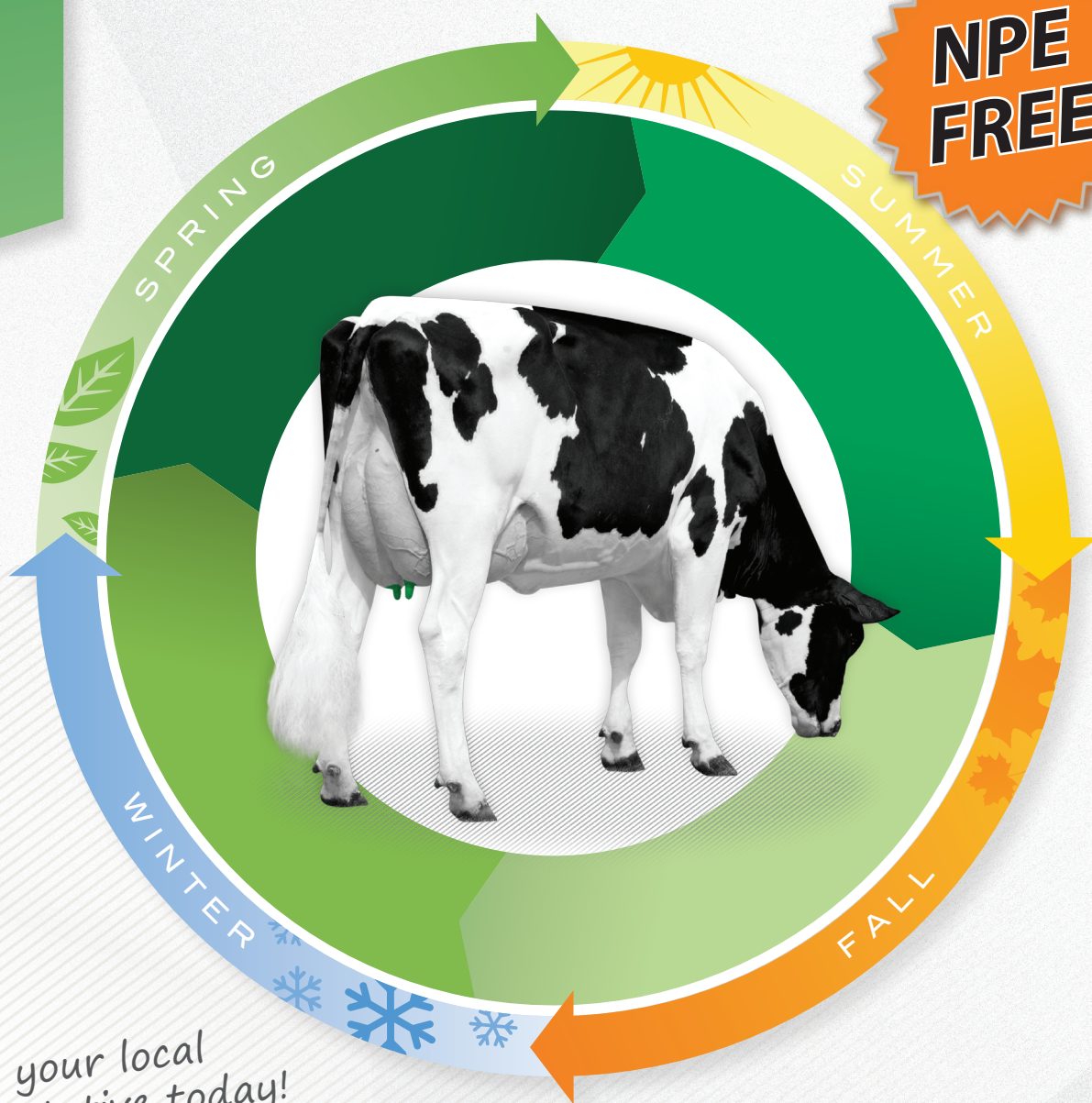


## YEAR-ROUND TEAT PROTECTION & CARE

FULL SPECTRUM **Valiant** **ENCORE** *Express*

The ABS Valiant® product line contains a dual germicide system that ensures teat protection from bedding to parlor and everywhere in between. Formulated to maintain healthy skin year-round, the premium products use the germicide Chlorine Dioxide (ClO<sub>2</sub>) as a base because it is broad spectrum, safe, sustainable, quick kill and effective under the most challenging dairy farm conditions. No matter the season or the challenge, the full range of ABS solutions delivers the highest quality of care every time.

**NPE  
FREE**



Contact your local  
ABS representative today!

A Solution for Each Season

**ABS** QUALITY MILK SYSTEMS®



# TOP UDDER CARE CHALLENGES ON THE FARM

- 1** Repair and prevent a skin condition or teat end issue (hyperkeratosis)  
**Solution: Valiant Pre-Post with CLO<sub>2</sub> germicide**

  - High emollient levels maintain or improve skin condition
  - Quick and gentle repair of skin tissue and teat ends
  - Exfoliation relieves dry skin and softens hyperkeratosis
- 2** Shorten prep time  
**Solution: Valiant Pre and Express Yellow**

  - Both provide a 15 second, 5 log kill; other products need at least 30 seconds to achieve the same kill
  - Valiant Pre is high in detergent, aiding the physical cleaning process
  - Least affected by organic interference, maintaining kill speed above other germicides
- 3** Dirty environment  
**Solution: Valiant family with CLO<sub>2</sub> germicide**

  - Effective between milking times
  - Stands up to high organic loads without interference
  - Dual germicides maximize kill performance with the combination of Acidified Sodium Chlorite/LAS
- 4** High bacterial load of alternative bedding (sawdust, reclaimed or recycled sand, manure solids, etc.)  
**Solution: Valiant Shield**

  - Effective barrier dip
  - Reduced tackiness prevents bedding from sticking to skin
  - Dries quickly without degrading condition as other barriers do
- 5** Wet bedding materials cause high levels of bacteria and dry, cracked teat skin  
**Solution: Post dip with Valiant Pre-Post**

  - Lactic acid plus 12.5% total emollients soften dead skin
  - Allows dead skin removal during prep procedure
- 6** Monitoring application accuracy and results  
**Solution: Valiant Pre-Post and Express Blue**

  - Color marking on teat skin post dip clearly indicates skin condition
  - Green/blue colorant stains only dead skin cells
  - Skin condition is excellent when "green teats" disappear

## Valiant<sup>®</sup> PRODUCT RECOMMENDATIONS

CONDITIONS	RECOMMENDED PRE-DIP	RECOMMENDED POST-DIP
<b>Environmental Mastitis</b>	1 <sup>st</sup> Valiant Pre, 2 <sup>nd</sup> Express	1 <sup>st</sup> Valiant Barrier/Shield or Encore Barrier
<b>Contagious Mastitis</b>	1 <sup>st</sup> Valiant Pre or Valiant PP, 2 <sup>nd</sup> Express	1 <sup>st</sup> Valiant PP, 2 <sup>nd</sup> Express
<b>Teat Skin or Teat End Score &gt; 3</b>	1 <sup>st</sup> Valiant PP, 2 <sup>nd</sup> Valiant Pre	1 <sup>st</sup> Valiant PP or Encore PP, 2 <sup>nd</sup> Express Blue, 3 <sup>rd</sup> Artec
<b>Very Poor Skin Condition</b>	1 <sup>st</sup> Valiant PP or Encore PP	1 <sup>st</sup> Artec, 2 <sup>nd</sup> Valiant PP
<b>Hot, Humid and Wet</b>	1 <sup>st</sup> Valiant Pre, 2 <sup>nd</sup> Express	1 <sup>st</sup> Valiant Shield or Encore Barrier
<b>Dry and/or Cold</b>	1 <sup>st</sup> Valiant PP or Encore PP	1 <sup>st</sup> Valiant PP, Encore PP or Artec