



MENSWEAR SARTORIALIST COLLECTION
FALL/WINTER 2013

CONCEPT

“An attempt at visualizing the Fourth Dimension: Take a point, stretch it into a line, curl it into a circle, twist it into a sphere, and punch through the sphere.”
Einstein, Albert

FACETS OF THE FOURTH DIMENSION SUCH AS SIMULTANEITY, FRAGMENTATION, AND DISORIENTATION ARE EXPLORED THROUGHOUT THIS FALL/WINTER COLLECTION. THESE NOTIONS ARE MADE APPARENT WITH HIDDEN AGENDAS SUCH AS MOBIUS CUFFS, TESSERACT EMBOSSEMENTS AND MONOGRAMS. FURTHER HIGHLIGHTS ARE THE PRINTS BY LIU WEI AND EADWEARD MUYBRIDGE; THE FORMER ADVOCATES AN OPEN-MINDED MENTALITY WHILE THE LATTER SHOWCASES MOTION IN PHOTOGRAPHY VIA FRAGMENTATION.

THE NATURE OF THE HYPERCUBE AND THE MOBIUS STRIP IS ONE THAT DOES NOT ACCOMMODATE ANY SECTIONS THAT REPRESENT “NOW” OBJECTIVELY. WITHIN THIS FOUR-DIMENSIONAL STRUCTURE, THE CONCEPTS OF HAPPENING AND BECOMING ARE NOT COMPLETELY SUSPENDED, WHAT OCCURS MERGES BOTH PAST AND PRESENT EXPERIENCE SUCH THAT ONLY A SINGLE EXISTENCE REMAINS. WITH THIS IN MIND, THE FOLLOWING COLLECTIONS ARE RIDDLED WITH GARMENTS THAT ADOPT A MORE SINGULAR FORM. SIMULTANEITY IS PERCEIVED IN THE LACK OF A DEFINITE FRONT AND BACK OR THE MULTIPLE PRESENCES OF PLACKETS, POCKETS, AND COLLARS, AS WELL AS THE USE OF SHEER FABRICS. THE SENSE OF DISORIENTATION EXPERIENCED AS A HYPERCUBE FOLDS INTO ITSELF IS REPRESENTED IN THE DISPROPORTIONATE COLLARS AND SLEEVES, EXTERIOR LAPELS, AND THE DISPLACEMENT OF WELTS.

COLLECTION KEY FEATURES

DISPLACED WELTS / DOUBLE FRONTED GARMENTS / DISPROPORTIONATE SLEEVES + COLLARS / EXTERIOR LAPELS / OFF-CENTER PLACKETS / TRANSPARENT BOWTIES + LININGS / MISMATCHED HEMLINES / MONK STRAPS / BOW TIES

MUSE

JUNYA WATANBE

“My ideas and feelings are strongly distilled into the collections and the garments I create” Watanabe concludes. “I believe that providing further detail and explanation in words would not lead to more profound insight, but rather, obscure the focus that should be placed on the garments themselves.”

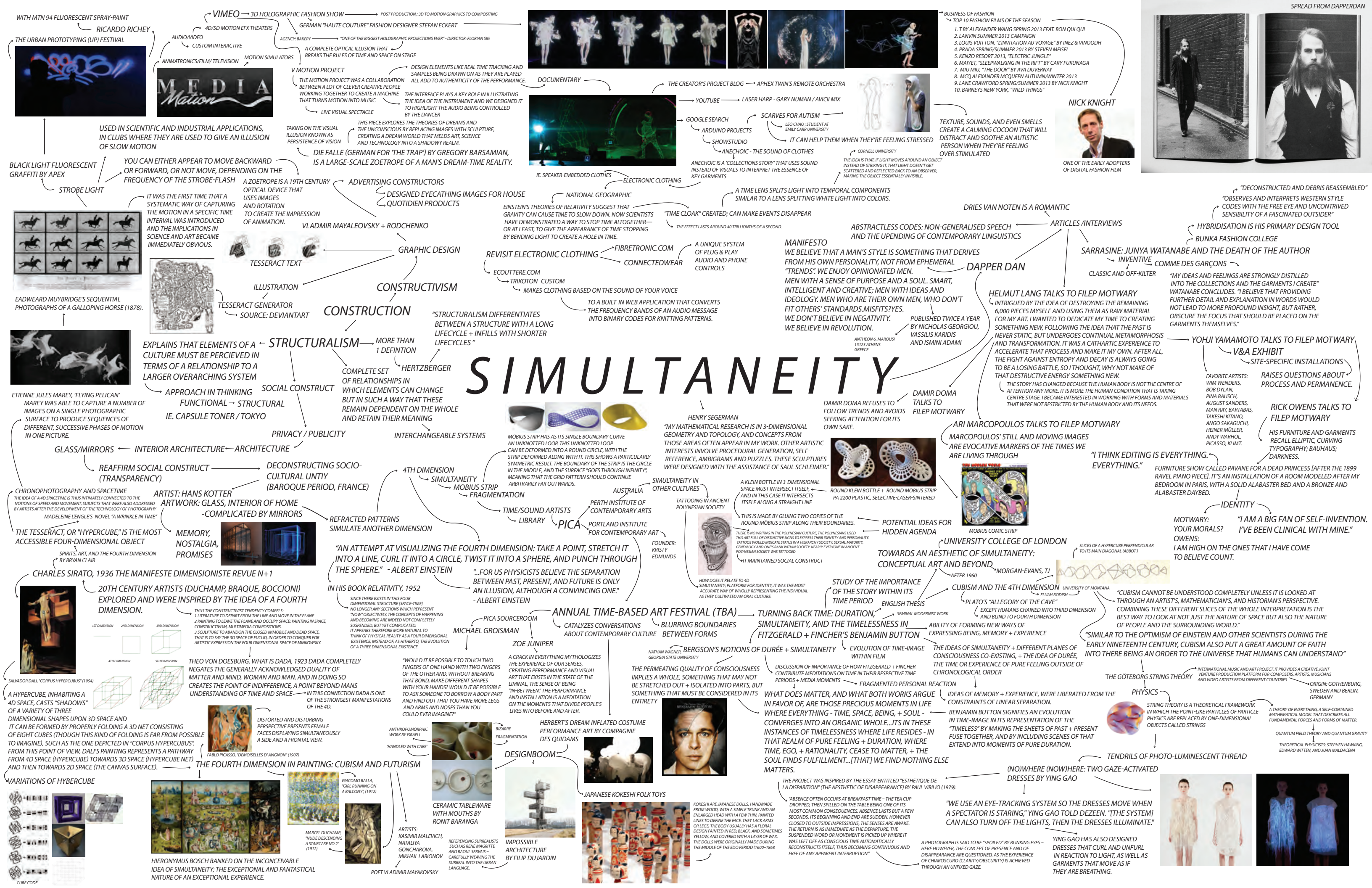
- Flaccavento, Angelo. "Sarrasine: Junya Watanabe and the Death of the Author."
Dapper Dan 5 (2012)

TARGET CONSUMER

ADVOCATES OF DAPPER DAN MAGAZINE

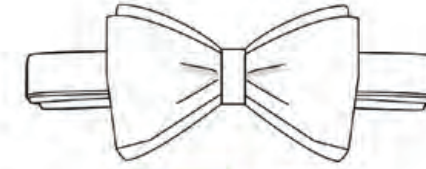
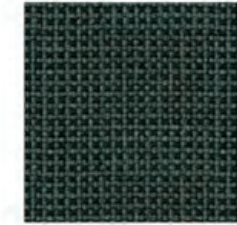
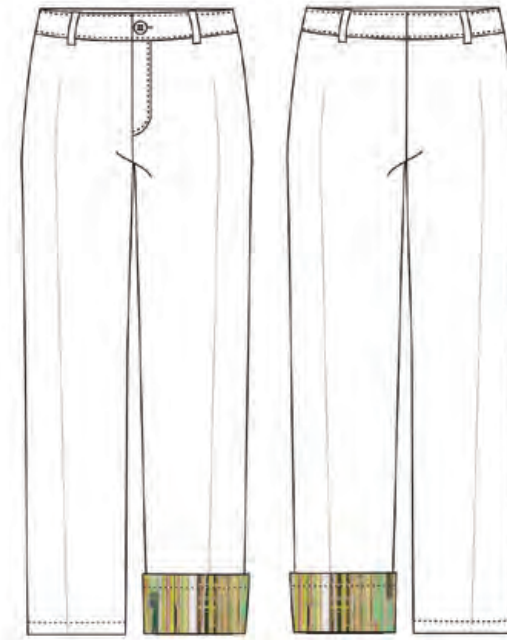
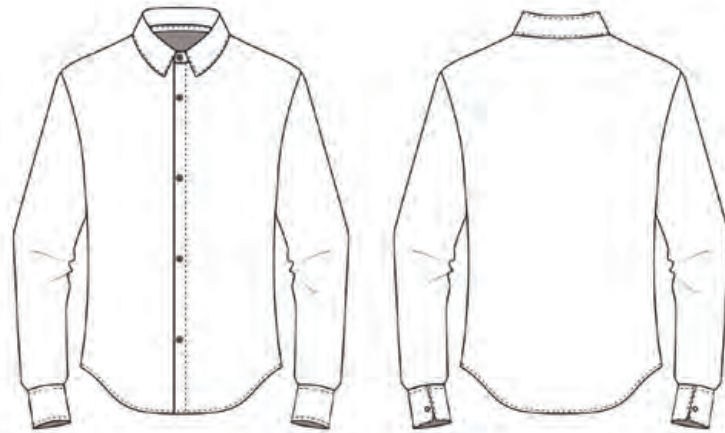
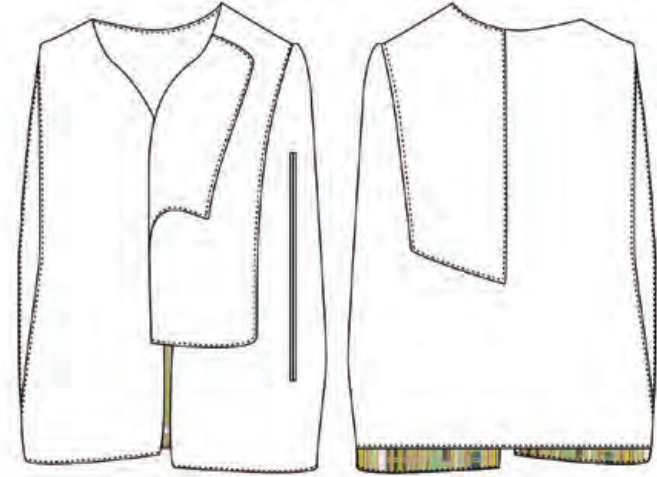
DAPPER DAN; A MENS MAGAZINE THAT DISCARDS SPOON-FED TRENDS. FOUNDED ON SPIRIT; NOT FORMAT. ENCOMPASSES MUSIC, CULTURE, APPAREL, PHILOSOPHY...FEEDS THE WANDERING MIND. PUBLISHED TWICE A YEAR. INFLUENCES OPINION. CELEBRATES INTELLIGENCE AND CREATIVITY. SATISFIES MEN WHO STAND STRONG. MEN WHO ARE THEIR OWN MEN.

“Dapper Dan is for the man who doesn’t feel he should have to be like everybody else.”

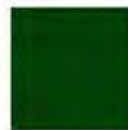
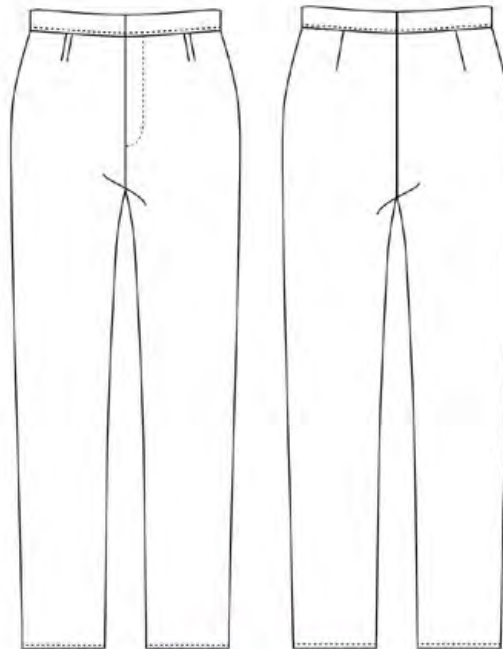
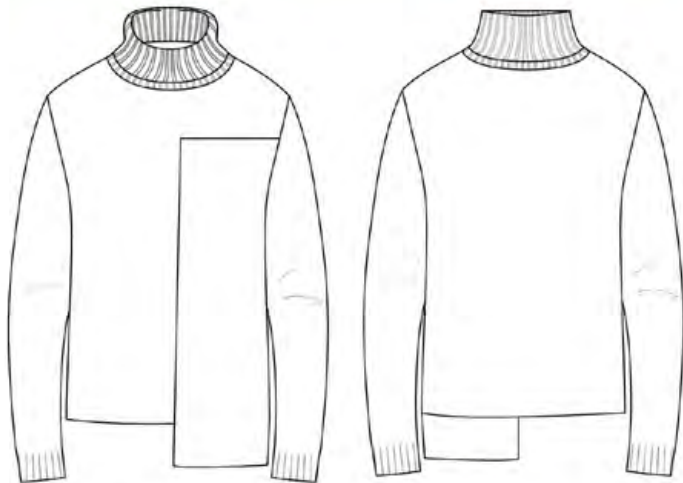
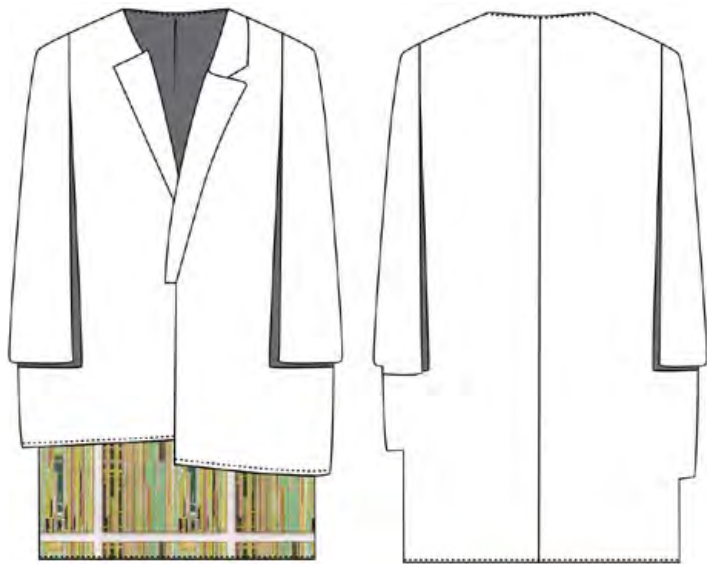




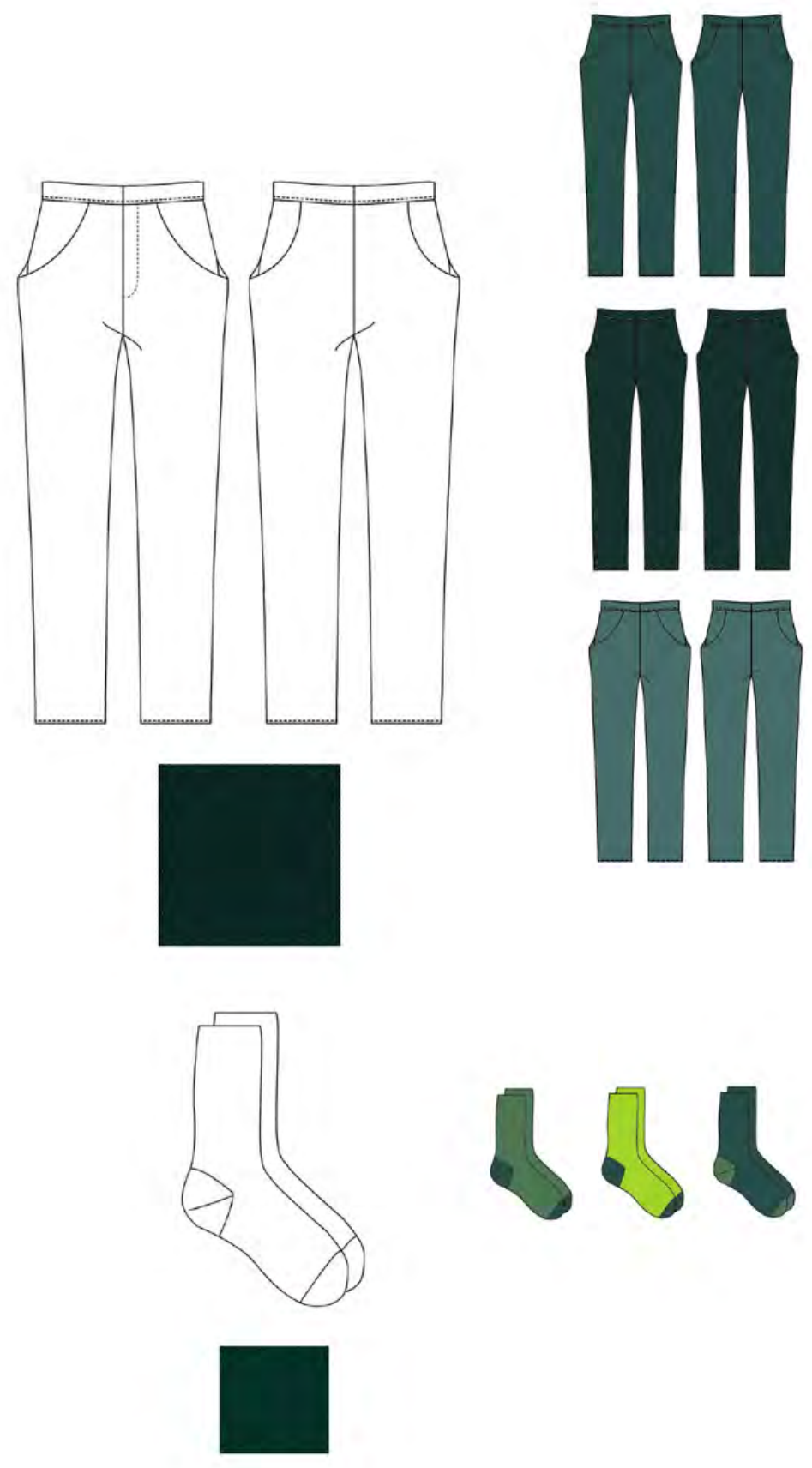
LOOK 1



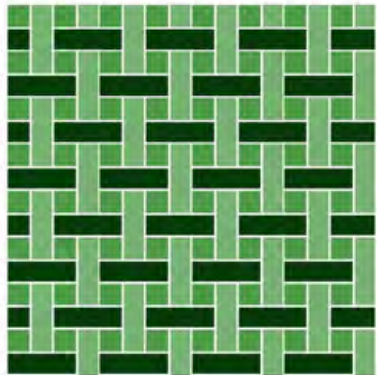
LOOK 2



LOOK 3



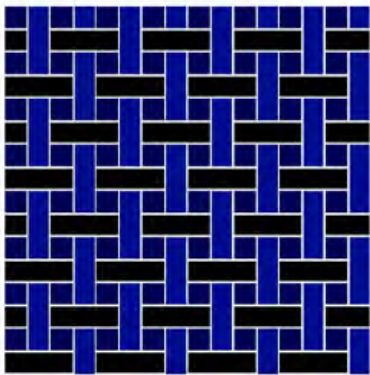
MENSWEAR YARN DYE TEXTILES A/W 2013 COLLECTION



PLAIN WEAVE



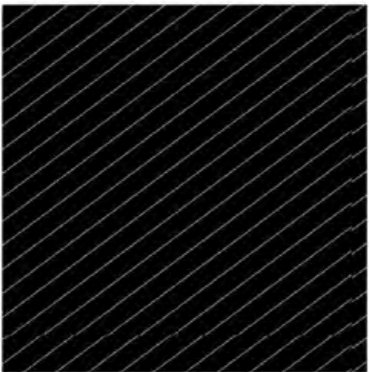
HERRINGBONE WEAVE



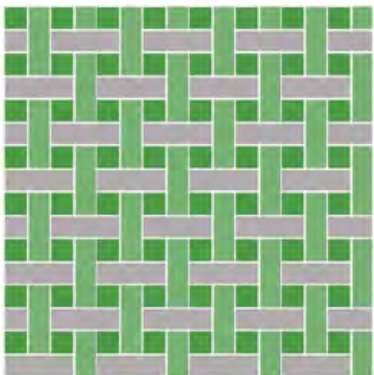
PLAIN WEAVE



HERRINGBONE WEAVE



TWILL WEAVE

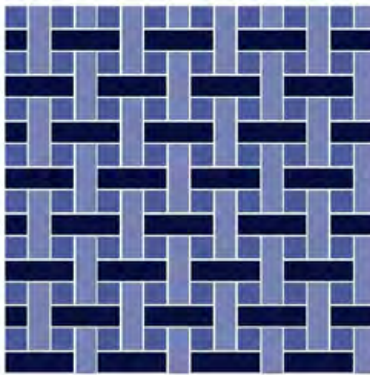


PLAIN WEAVE

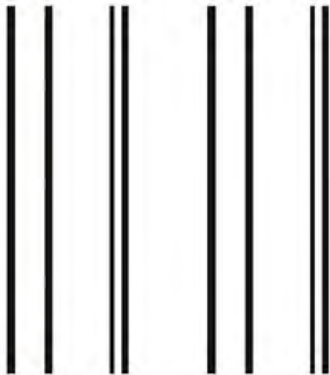


PLAIN WEAVE

WEEKEND



PLAIN WEAVE

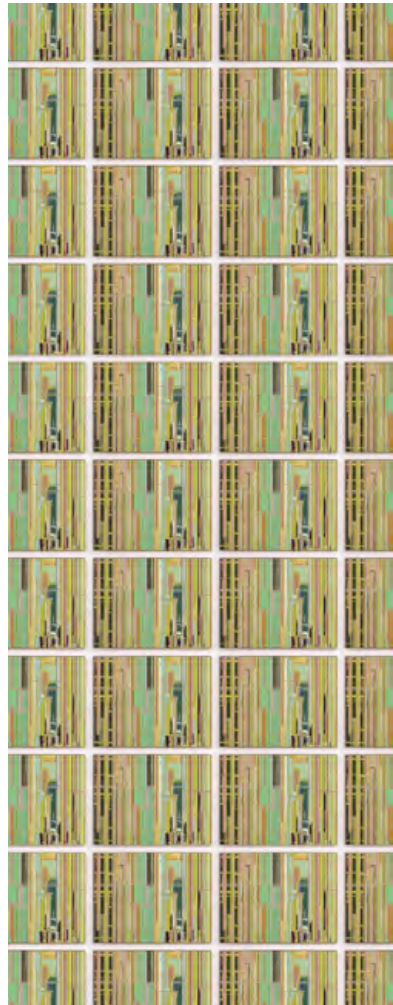


PLAIN WEAVE

WORK

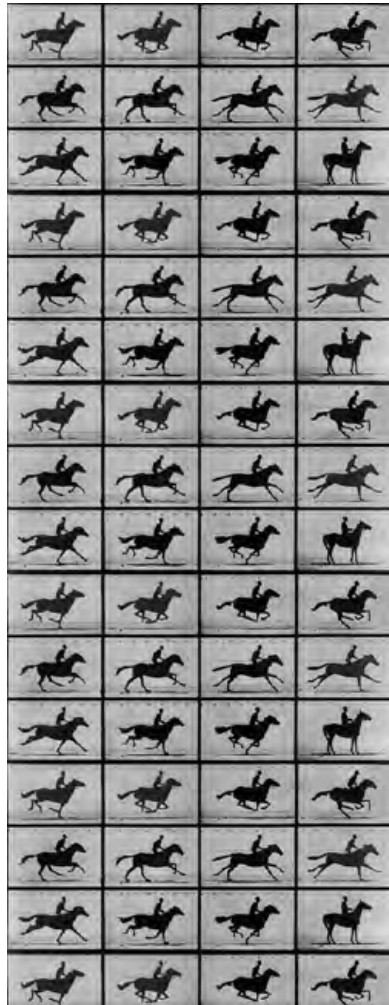
NEW FORMAL

PRINTS



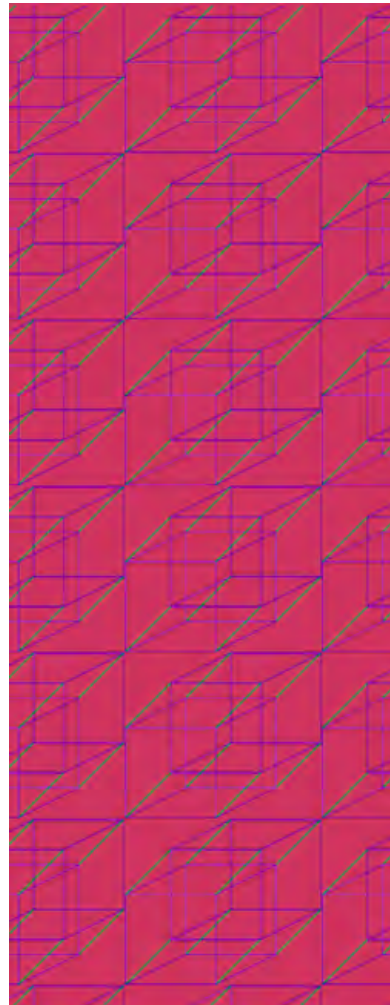
PLACED AS LINING

LIU WEI'S WORK IS A JOURNEY FOR BOTH THE EYES AND MIND. THESE COLOR BLOCK PANELS IN PASTEL HUES DO NOT HAVE ANY SPECIFIC MEANING; THUS IT CULTIVATES THE SAME OPEN-MINDED APPROACH THAT THE CONCEPT OF THE 4TH DIMENSION DEMANDS.



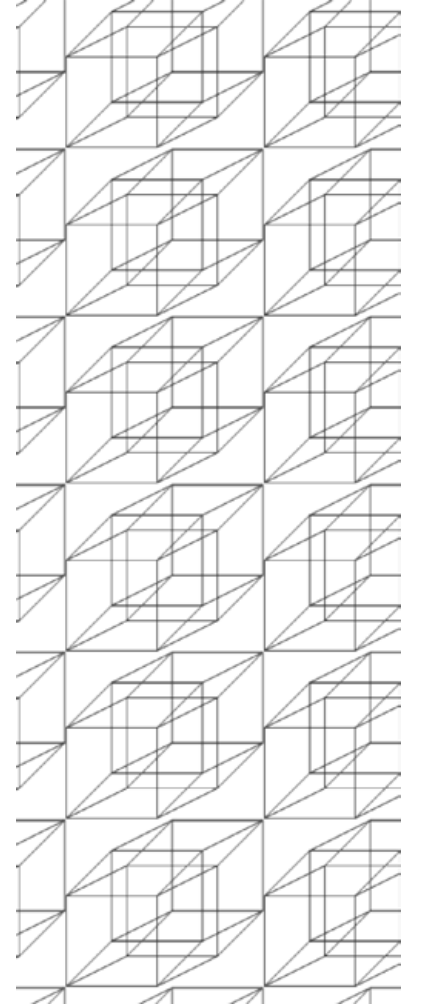
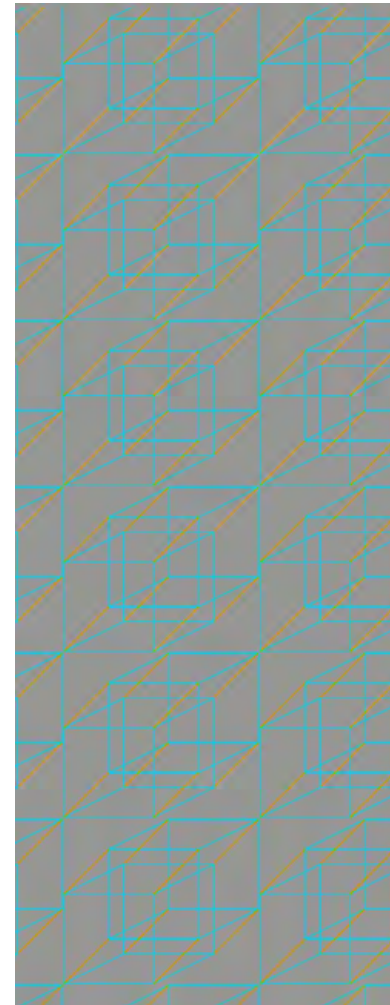
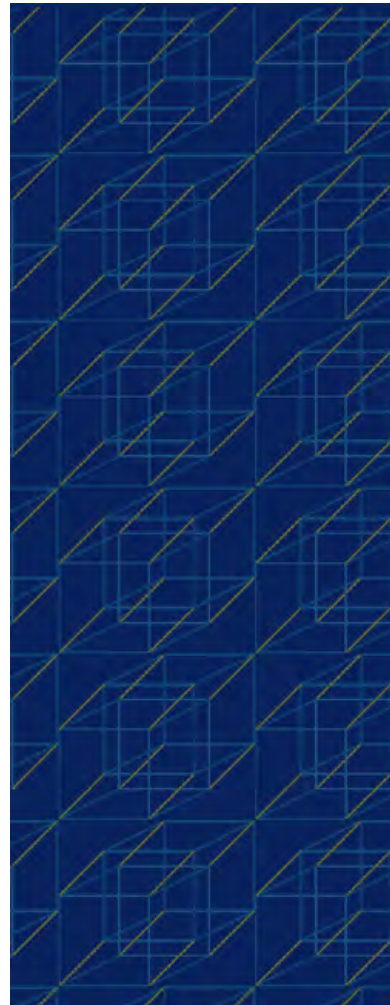
PLACED AS POCKET LINING

EADWARD MUYBRIDGE (1830-1904) SUCCEEDED IN CAPTURING SUCCESSIVE IMAGES OF A GALLOPING HORSE AND INVENTED THE ZOOPRAXISCOPE TO REPRODUCE THEM IN SUCCESSION, CREATING THE ILLUSION OF MOTION. THIS FRAGMENTATION OF MOTION IS AN INVESTIGATION OF SIMULTANEITY.

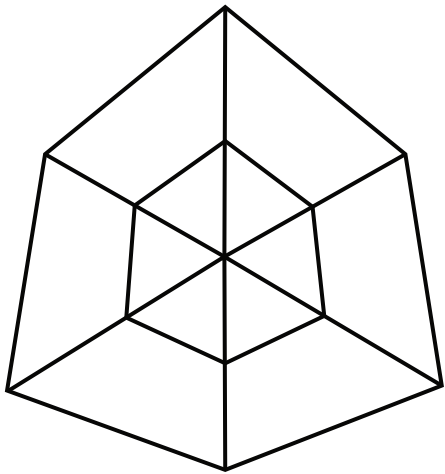


PLACED ON SELF FABRIC

THIS IS A REPRESENTATION OF THE HYPERCUBE. THE HYPERCUBE IS A GENERALIZATION OF A 3-CUBE TO N DIMENSIONS.

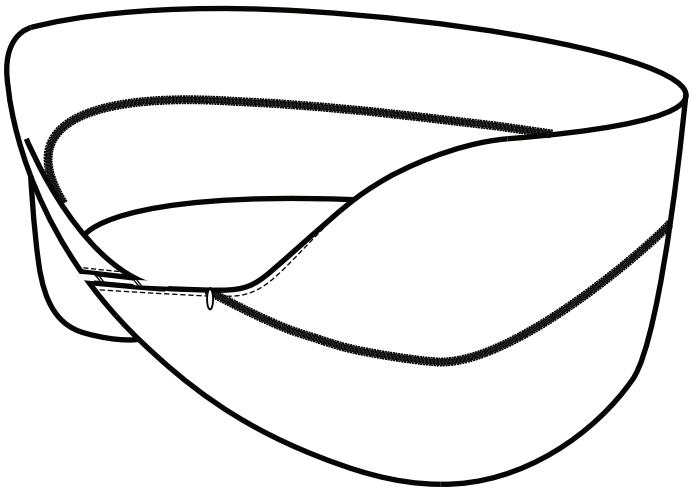


HIDDEN AGENDA



WORK
HYPERCUBE MONOGRAM
TO BE PLACED ON COLLAR (CENTER BACK)

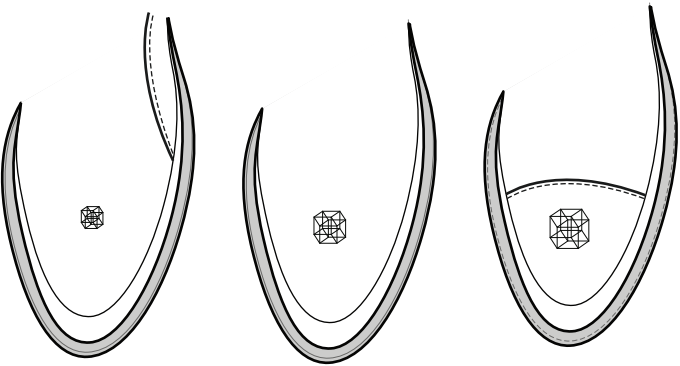
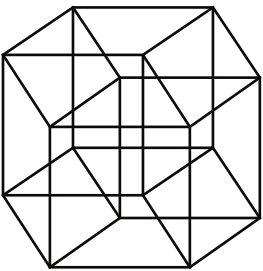
THE TESSERACT, OR "HYPERCUBE," IS THE MOST ACCESSIBLE FOUR-DIMENSIONAL OBJECT. IT IS A PORTRAYAL OF A CUBE THAT CONTINUALLY FOLDS INTO ITSELF.



NEW FORMAL
MÖBIUS CUFF

THE MÖBIUS STRIP IS A SURFACE WITH ONLY ONE SIDE AND ONLY ONE BOUNDARY COMPONENT. THE MÖBIUS STRIP HAS THE MATHEMATICAL PROPERTY OF BEING NON-ORIENTABLE. A LINE DRAWN STARTING FROM THE SEAM DOWN THE MIDDLE WILL MEET BACK AT THE SEAM BUT AT THE "OTHER SIDE". IF CONTINUED THE LINE WILL MEET THE STARTING POINT AND WILL BE DOUBLE THE LENGTH OF THE ORIGINAL STRIP.

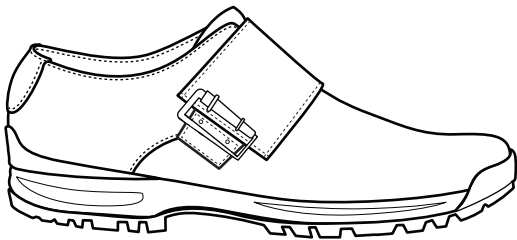
THE POSSIBILITY OF TRAVELING INDEFINITELY IN A LOOP ALONG A MOBIUS STRIP MAKES SOME PEOPLE ASSOCIATE THE MOBIUS STRIP WITH THE CONCEPT OF INFINITY.



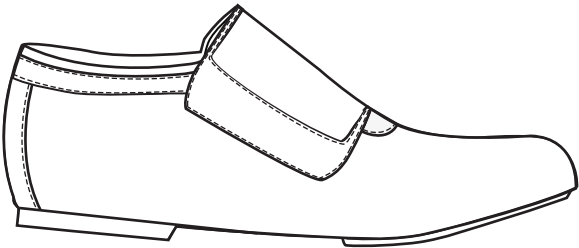
WEEKEND
EMBOSSED HYPERCUBE

"...FOR US PHYSICISTS BELIEVE THE SEPARATION BETWEEN PAST, PRESENT, AND FUTURE IS ONLY AN ILLUSION, ALTHOUGH A CONVINCING ONE."
- ALBERT EINSTEIN

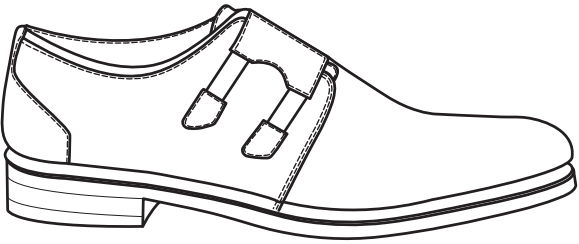
SHOES



WEEKEND



WORK



NEW FORMAL