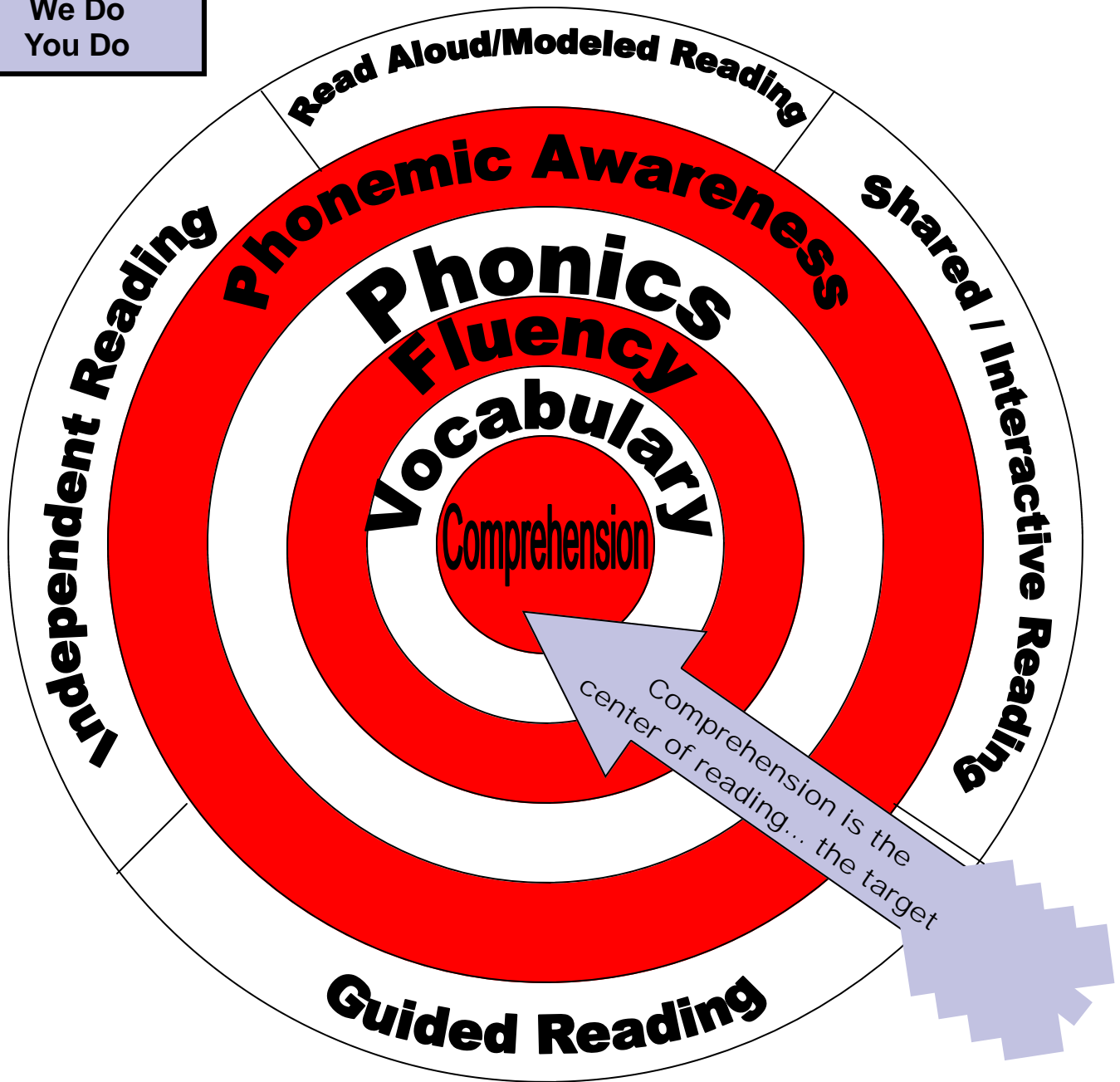


Targeted Reading Instruction

When Teaching
Reading,
Remember...
I Do
We Do
You Do



For more information,
please visit www.phila.k12.pa.us/regions/north/literacy.html#wheel

What is Balanced Literacy?

Read Aloud/Modeled Reading

- Demonstrates proficient reading
- Expands access to text beyond child's abilities
- Exposes children to a variety of genres

Write Aloud/Modeled Writing

- Demonstrates proficient writing
- Expands access to writing beyond child's abilities
- Exposes children to a variety of genres

Shared/Interactive Reading

- Models reading strategies
- Teaches reading strategies
- Extends understanding of the reading process
- Teacher and child share reading
- Teacher encourages child to read when able

Shared/Interactive Writing

- Models writing strategies
- Teaches writing strategies
- Extends understanding of the writing process
- Teacher and child share pen
- Teacher and child compose together

Guided Reading

- Teacher reinforces skills
- Teacher engages child in questioning and discussion
- Teacher acts as a guide
- Child does the reading
- Child practices strategies
- Child builds independence

Guided Writing

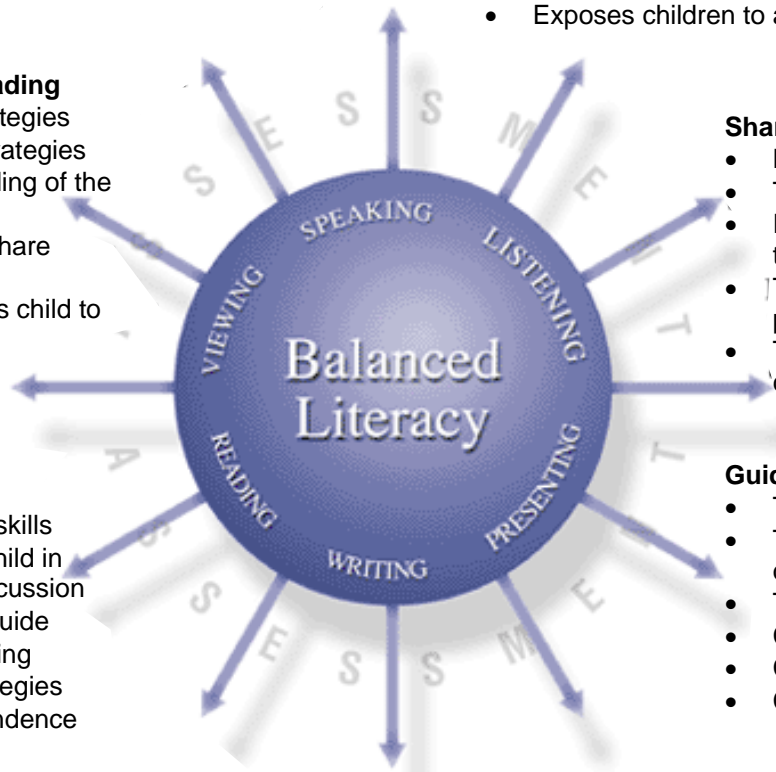
- Teacher reinforces skills
- Teacher engages child in questioning and discussion
- Teacher acts as a guide
- Child does the writing
- Child practices strategies
- Child builds independence

Independent Reading

- Child chooses the text
- Child practices at his or her independent level
- Time to practice
- Demonstrates the value of reading

Independent Writing

- Child chooses topic
- Child practices at his independent level
- Time to practice
- Demonstrates the value of writing



Steps of the Writing Process

Integrating the 6 + 1 traits of writing

When Teaching Writing, Remember...
I Do
We Do
You Do

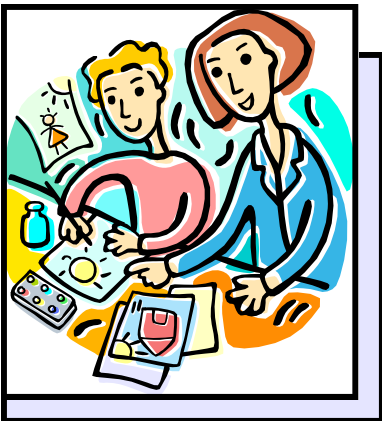


Teaching Sequence



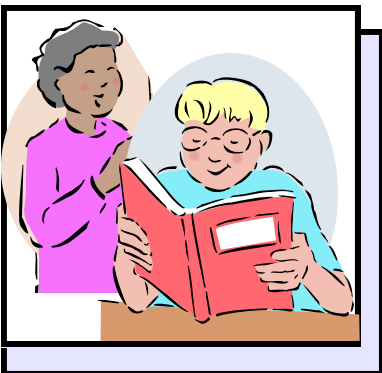
I DO – Teacher

- Teacher Modeling/Think Aloud
- Explicit Instruction
- Literacy Components
 - ◇ Read Aloud/Modeled Reading
 - ◇ Shared/Interactive Reading
 - ◇ Write Aloud/Modeled Writing
 - ◇ Shared/Interactive Writing



WE DO -Teacher/Student(s)

- Guided Practice
- Shared Responsibility
- Literacy Components:
 - ◇ Shared/Interactive Reading
 - ◇ Guided Reading
 - ◇ Shared/Interactive Writing
 - ◇ Guided Writing



YOU DO -Student(s)

- Independent and/or Cooperative Practice
- Student Demonstration/Teacher Monitoring
- Literacy Components:
 - ◇ Independent Reading
 - ◇ Independent Writing

ASSESSMENT