

Thank you for choosing our product!

2015

## 1. About this manual

This manual tells you how to use **Shade** (Cybergenic Security Center).

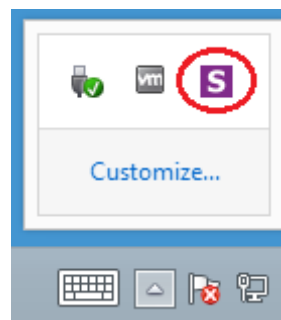
## 2. About Shade

**Shade** is a virtual environment that separates malware (viruses including worms and Trojans) from harming computer's Operating System, executable files and the Registry.

## 3. Launching Shade

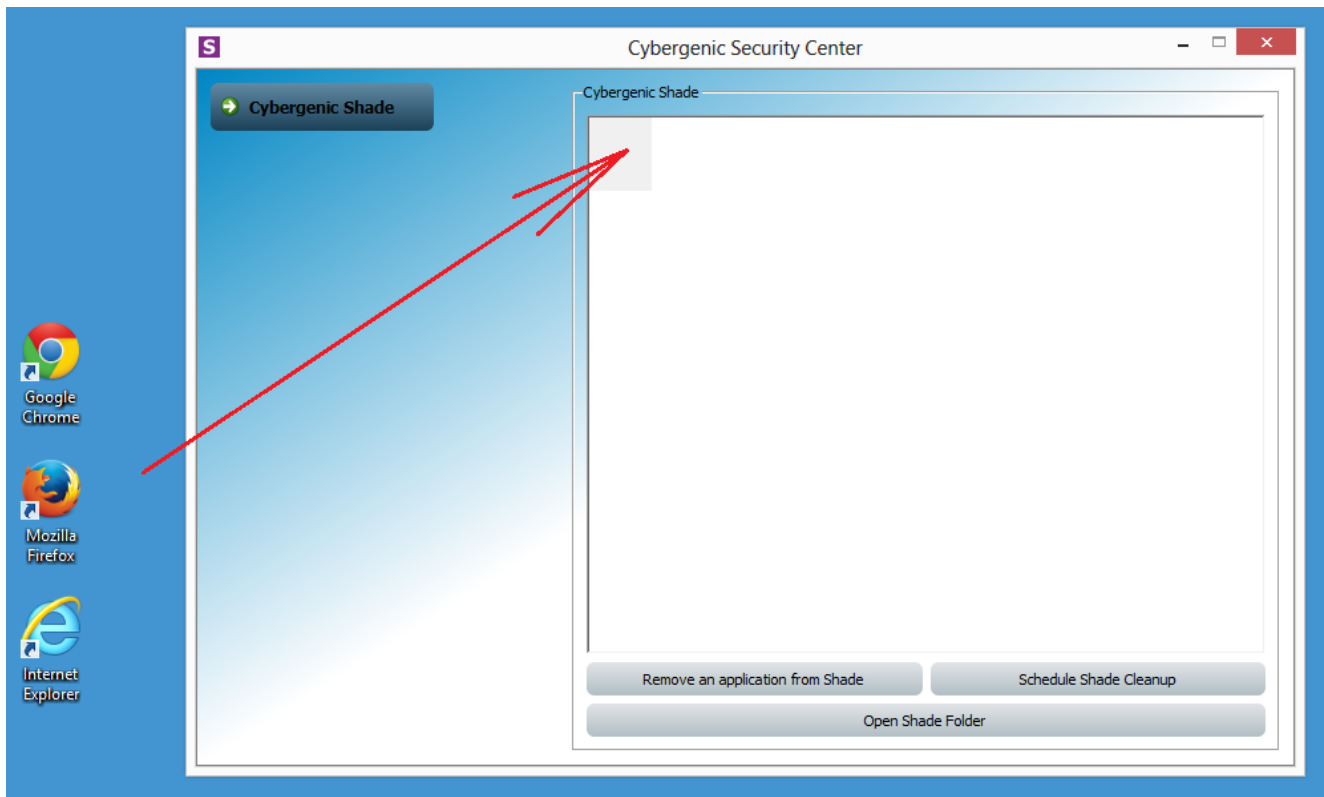
After installing **Shade** on your computer, you should add browsers that you use for internet surfing (e.g. **Internet Explorer, Mozilla Firefox, Google Chrome, etc.**) into the virtual environment, unless Shade does not offer to add it automatically right after installation. You can also add email programs to secure your email from viruses and unwanted encryption.

Double-click purple "**S**" (Shade) icon in system tray.

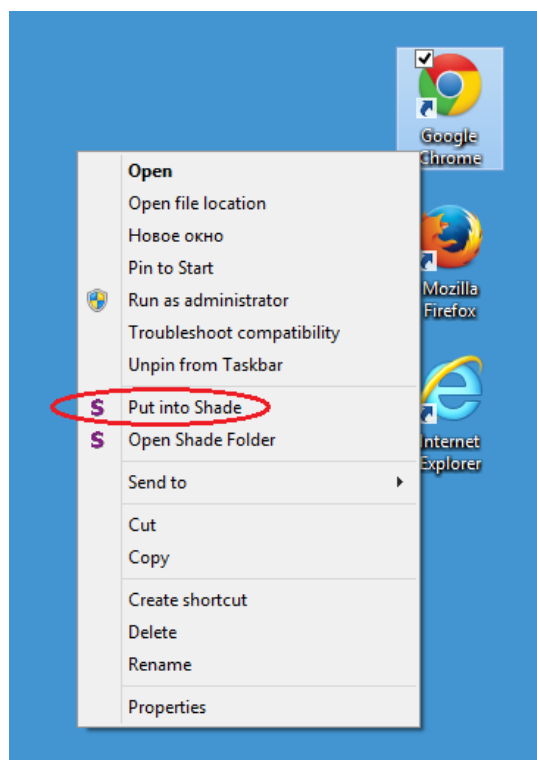


Then click **Cybergenic Shade** button when window of Cybergenic Security Center interface opens.

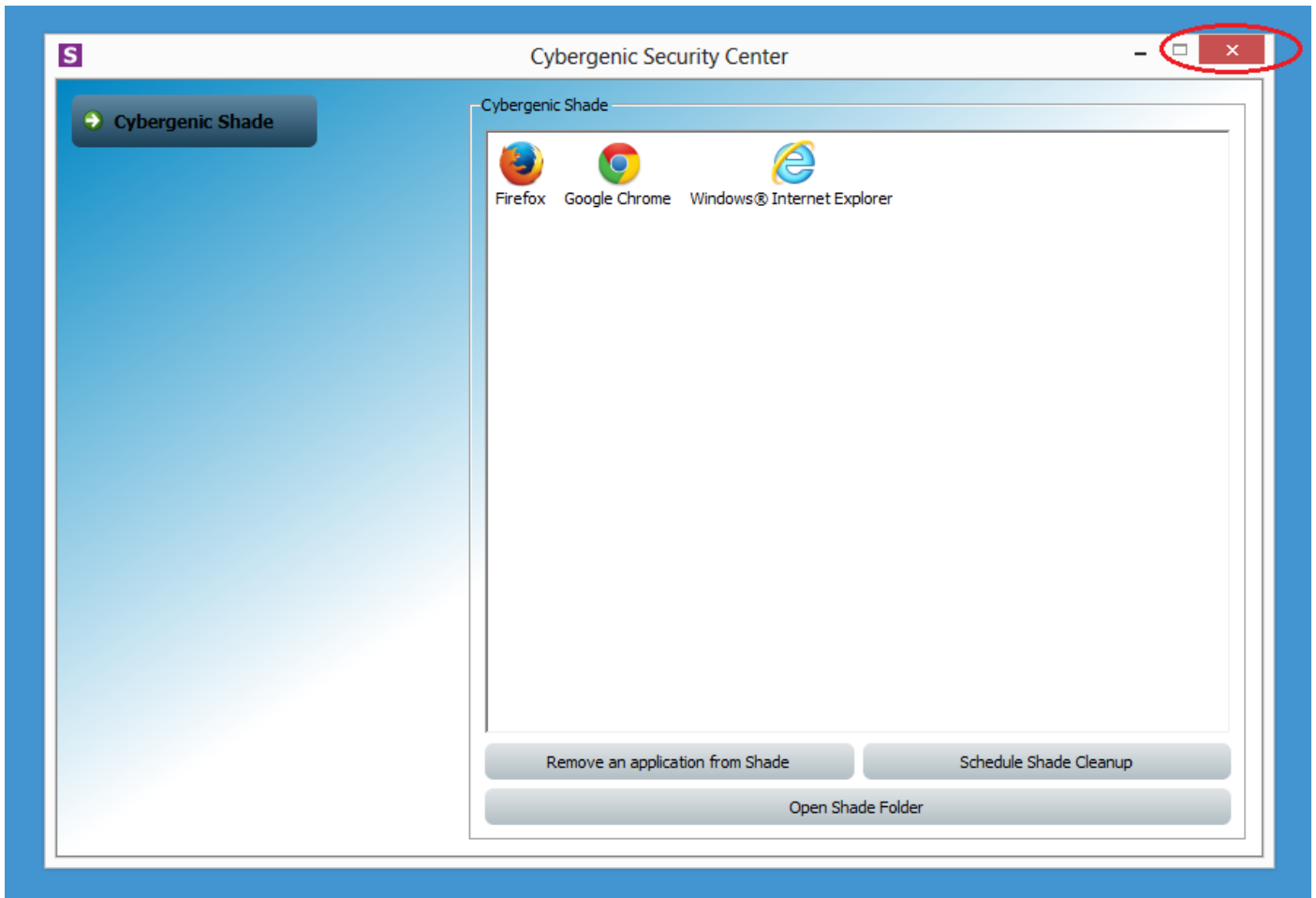
Drag&Drop your browser's or email's Shortcuts into the Shade window from your Desktop or Program List.



Also, Shortcuts can be placed into the window by clicking their Shortcut with the right mouse button, then choosing **Put into Shade** option.



After desired Shortcuts are placed into **Shade**, the window can be closed by clicking X button.



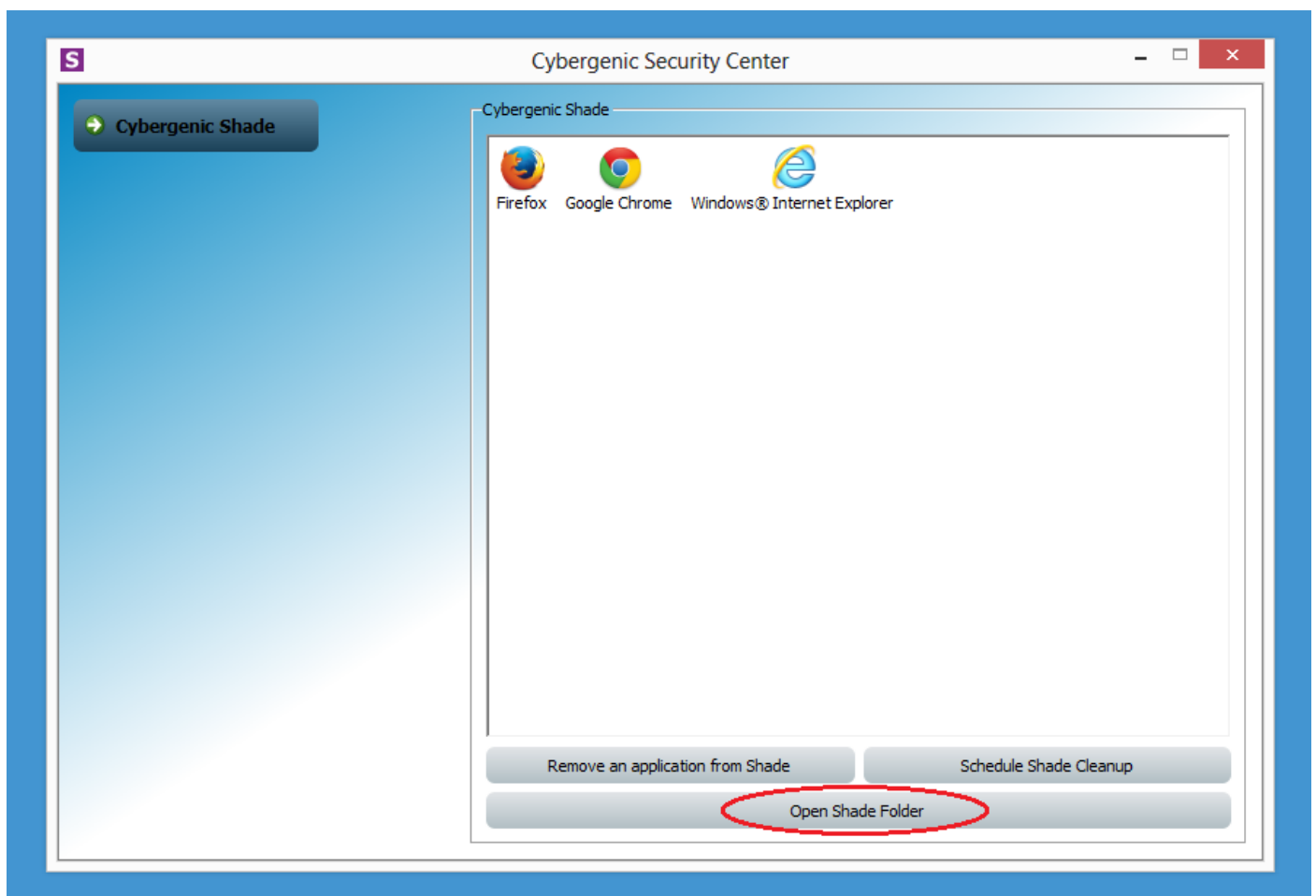
Then, browsers or email programs should be launched as usual, by double-clicking the same Shortcuts on Desktop or Program List.

## 4. How to use Shade Folder (virtual folder)

By placing browser of email program into **Shade**, it begins to operate in a virtual safe environment including downloaded files from the Internet, which ensures high level of protection of Computer's Operating System.

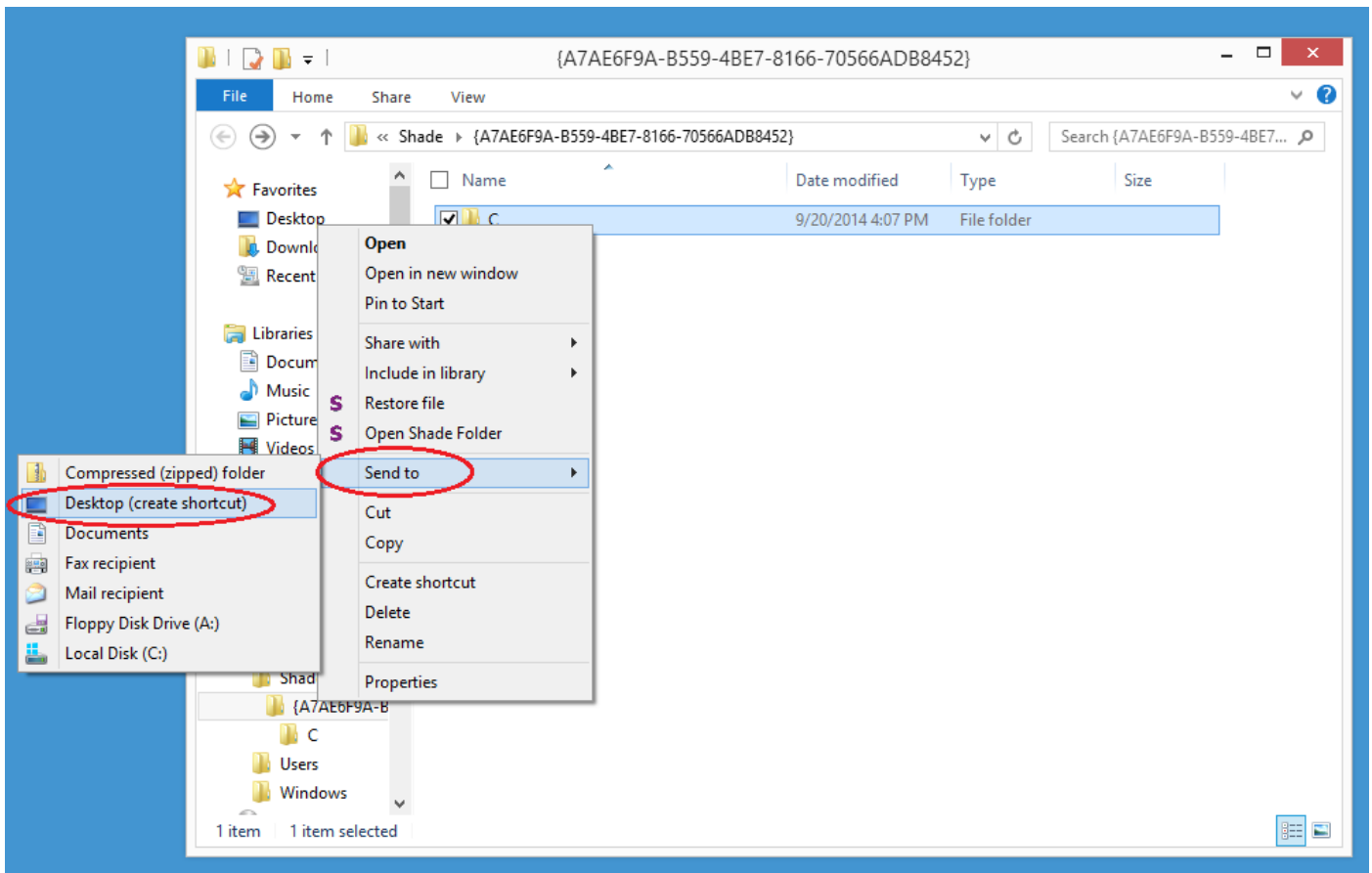
To have a convenient and quick access to downloaded files, it is recommended to have a Shortcut to the Shade Folder on your Desktop.

To place a Shortcut, click **Open Shade Folder** button.



Virtual root folder will open. Go to **C** folder, then to **Users** folder. **User** folder can be found there (**C > Users > user**). There you can find your **Downloads**, **Desktop** and other folders.

Click **user** folder with the right mouse button, then roll over **Send to** option, then choose **Desktop (Create Shortcut)**.



Hereby, downloading your files in regular way, for instance into your **Downloads** folder or on your **Desktop**, they will appear in Shade Folder in a folder with the same name (e.g. Downloads or Desktop, etc.), where you can pick them up and remove anywhere you like.

**Important notice!** Once files removed from Shade Folder, they are not in the safe environment anymore. It is NOT safe to execute downloaded files or open them with software not being executed inside virtual environment. For your convenience, once program is run inside virtual environment, it has "S" (Shade) logo on it's windows.

We are constantly working on improving our product and would be more than happy to receive your feedback about **Shade** by email [info@cybergenic.co](mailto:info@cybergenic.co) or via feedback form on our website <http://www.shadesandbox.com/#!support-shade/crfb>

**Have a Zero security incidents!**