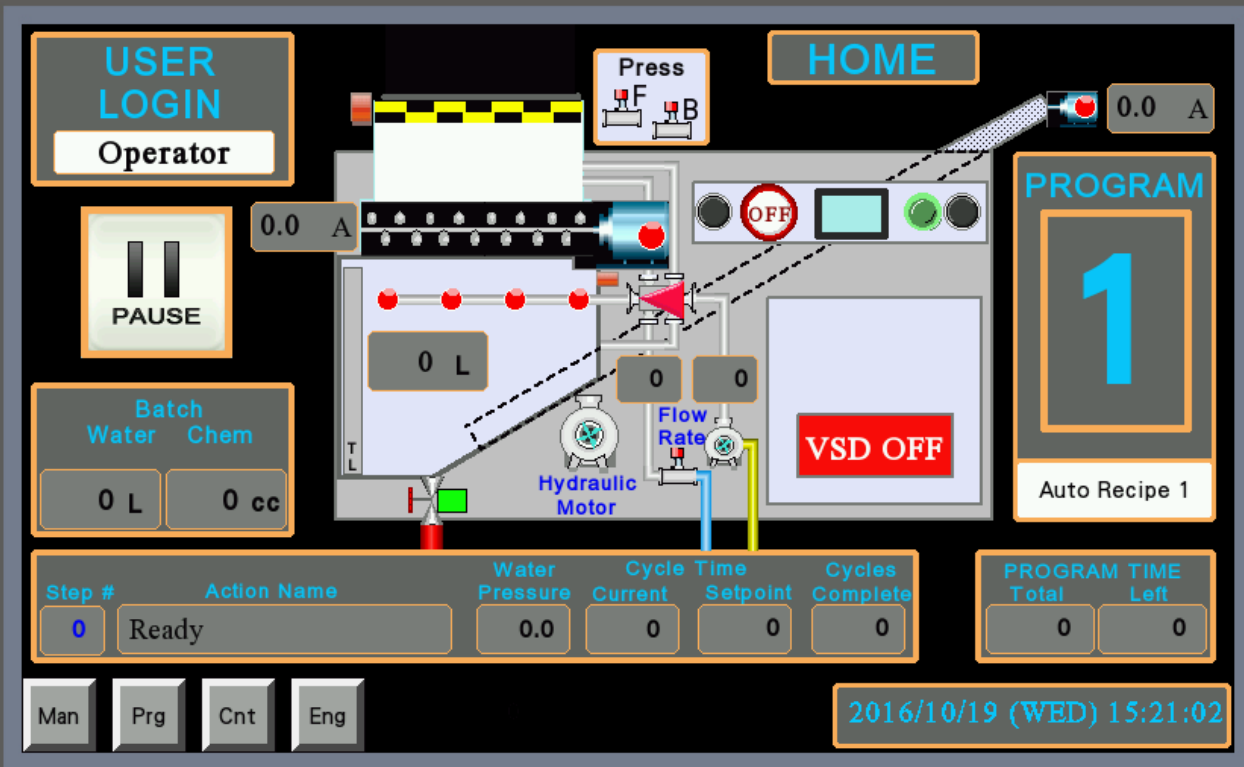


POWER



OMRON

POWER

USER  
LOGIN

Operator

Press

F B

HOME

0.0 A

PROGRAM

Cycle Paused By Operator.  
Press Start To Continue.

Step #

Action Name

Pressure

Current

Setpoint

Complete

Total

TIME  
Left

0

Ready

0.0

0

0

0

0

0

Man

Prg

Cnt

Eng

2016/10/19 (WED) 15:34:07

OMRON

POWER

USER  
LOGIN

Operator

HOME

Press



0.0 A

PROGRAM

**Paused.**  
**Unable To Dispense Enough**  
**Chemical. Please Check Chemical**  
**Level And Replace Drum If Needed.**  
**Press Start When Ready.**

Step #

Action Name

Pressure

Current

Setpoint

Complete

Total

TIME  
Left

0

Ready

0.0

0

0

0

0

0

Man

Prg

Cnt

Eng

2016/10/19 (WED) 15:25:39

OMRON

POWER

USER  
LOGIN

Operator

HOME

Press



0.0 A

PROGRAM

**Paused.**  
**Water Dispensing Is**  
**Insufficient For Cycle.**  
**Resolve Water Problem**  
**To Continue.**

Step #	Action Name	Pressure	Current	Setpoint	Complete	Total	TIME Left
0	Ready	0.0	0	0	0	0	0

Man

Prg

Cnt

Eng

2016/10/19 (WED) 15:24:41

OMRON

POWER

USER  
LOGIN

Operator

HOME

Press



0.0 A

PROGRAM

**Paused.**  
**Emergency Stop Activated.**  
**Release Emergency Stop**  
**And Press Start To Continue.**

Step #	Action Name	Pressure	Current	Setpoint	Complete	Total	TIME Left
0	Ready	0.0	0	0	0	0	0

Man

Prg

Cnt

Eng

2016/10/19 (WED) 15:22:43

OMRON

POWER

## COUNTERS

### CYCLES

0 Auto Cycles  
0 Incomplete  
0 Rinse Cycles

**Clear  
Counters**

0 Water Total  
0 Chemical Total  
0 Chemical Fault  
0 Water Evac Fault  
0 Water Ster Fault  
0 Auger Jam  
0 Shredder Jam  
0 Phase Failure

Hme

Man

Prg

Eng

OMRON

POWER

	Nozzle Number				
	1	2	3	4	
1st Flush					Flush Delay 2 s
2nd Flush					Flush Duration 2 s
3rd Flush					
4th Flush					

POWER

Chem 1  
Bottom 150 ml

Water 1  
Bottom 26 L

Chem 2  
Top 50 ml

Water 2  
Top 15 L

Chem 1  
Bottom 100 ml

Water 1  
Bottom 25 L

Chem 2  
Top 50 ml

Water 2  
Top 15 L

Chem 1  
Bottom 50 ml

Water 1  
Bottom 24 L

Chem 2  
Top 50 ml

Water 2  
Top 15 L

Chem 1  
Bottom 25 ml

Water 1  
Bottom 23 L

Chem 2  
Top 50 ml

Water 2  
Top 15 L

Wash Cycle

Water 1 15 L

Chem 50 ml

Water 2 10 L



OMRON



POWER

Shredder  
Run Time 600 s

Press Start  
Delay Time 60 s

Press  
Run Time 480s

Press Fwd  
Time 30 s

Press Rev  
Time 6 s

Shred Done  
Delay Time 10 s

Chem Spray  
Delay Time 10 s

Chem Down  
Delay Time 10 s

Auger  
Mix Time 30 s

Auger  
Mix Delay 30 s

Sterilising  
Time 660s

Drain Open  
Delay 10 s

1st Wash  
Delay 10 s

2nd Wash  
Delay 10 s

Discharge  
Time 180s

Hme



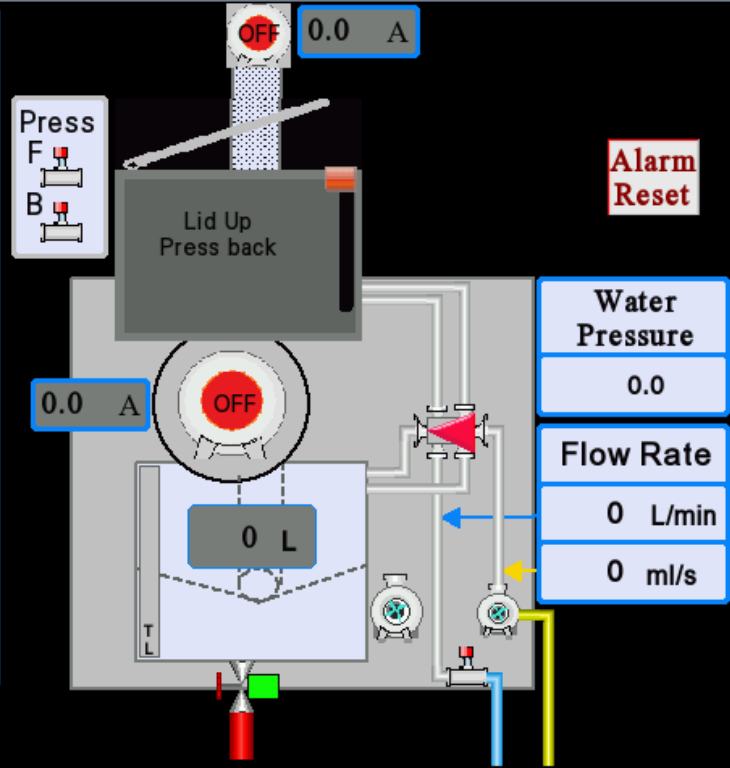
OMRON

POWER

**MANUAL CONTROLS**

Press	MTR OFF	FWD	BCK
Shredder		FWD OFF	REV OFF
Liquids Route		TNK OFF	HOP OFF
Water	ON	10 L	
Chemical	OFF	50 cc	
Auger		FWD	REV
Tank Drain	CLS		

Hme Prg Cnt Eng



OMRON

114

**Stick  
inserted.  
Press to  
remove**

## Clear Counters

[illegible]

OMRON

POWER

Year

2016

Month

10

Day

19

Hour

15

Min

49

Sec

9

Shredder  
Fwd Freq 50.00 Hz

Auger  
Sterlze Freq 50.00 Hz

Water Press  
Min SP 6.0 bar

Shredder  
Rev Freq 25.00 Hz

Auger  
Disch Freq 25.00 Hz

Aug High A  
Rev Time 3 s

Shred High  
Curr Limit 9.0 A

Auger High  
Curr Limit 1.0 A

Water Fill  
Delay Time 2 s

Shred Low  
Curr Limit 4.0 A

Auger Low  
Curr Limit 0.4 A

Wash Water  
Setpoint 5 L

Hme

Man

Prg

Cnt

Program  
Auto Recipe 1

1

USB

OMRON

POWER

USER  
LOGIN

Operator

HOME

Press



0.0 A

PROGRAM

**Stopped. Safety Circuit  
Tripped. Close Main Water  
Valve. Leave Machine On.  
Call Maintenance.**

Step #	Action Name	Pressure	Current	Setpoint	Complete
0	Ready	0.0	0	0	0

Total	TIME Left
0	0

Man

Prg

Cnt

Eng

2016/10/19 (WED) 15:44:21

OMRON

POWER

USER  
LOGIN

Operator

Press



HOME

0.0 A

PROGRAM

**Stopped. Booster Pump  
Tripped. Close Main Water  
Valve. Leave Machine On.  
Call Maintenance.**

Step #

Action Name

Pressure

Current

Setpoint

Complete

Total

TIME  
Left

0

Ready

0.0

0

0

0

0

0

Man

Prg

Cnt

Eng

2016/10/19 (WED) 15:44:09

OMRON

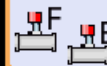
POWER

USER  
LOGIN

Operator

HOME

Press



0.0 A

PROGRAM

**Stopped. Tank Leak  
Detected. Close Main  
Water Valve. Leave Machine  
On. Call Maintenance.**

Step #	Action Name	Pressure	Current	Setpoint	Complete	Total	TIME Left
0	Ready	0.0	0	0	0	0	0

Man Prg Cnt Eng

2016/10/19 (WED) 15:43:52

OMRON

POWER

USER  
LOGIN

Operator

HOME

Press

0.0 A

PROGRAM

**Stopped. Tank Drain  
Malfunction. Close Main  
Water Valve. Leave Machine  
On. Call Maintenance.**

Step #	Action Name	Pressure	Current	Setpoint	Complete	Total	TIME Left
0	Ready	0.0	0	0	0	0	0

Man

Prg

Cnt

Eng

2016/10/19 (WED) 15:43:42

OMRON



POWER

USER  
LOGIN

Operator

HOME

Press



0.0 A

PROGRAM

**Stopped. Auger Scroll Broken.  
Close Main Water Valve.  
Leave Machine On.  
Call Maintenance.**

Step #

Action Name

Pressure

Current

Setpoint

Complete

Total

TIME Left

0

Ready

0.0

0

0

0

0

0

Man

Prg

Cnt

Eng

2016/10/19 (WED) 15:43:27

OMRON

POWER

USER  
LOGIN

Operator

HOME

Press



0.0 A

PROGRAM

**Stopped. Auger Jam Detected.  
Close Main Water Valve.  
Leave Machine On.  
Call Maintenance.**

Step #

Action Name

Pressure

Current

Setpoint

Complete

Total

TIME  
Left

0

Ready

0.0

0

0

0

0

0

Man

Prg

Cnt

Eng

2016/10/19 (WED) 15:43:13

OMRON

POWER

USER  
LOGIN

Operator

Press



HOME

0.0 A

PROGRAM

**Stopped. Shredder Jam  
Detected. Close Main Water  
Valve. Leave Machine On.  
Call Maintenance.**

Step #	Action Name	Pressure	Current	Setpoint	Complete	Total	TIME Left
0	Ready	0.0	0	0	0	0	0

Man

Prg

Cnt

Eng

2016/10/19 (WED) 15:42:47

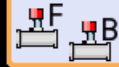
OMRON

POWER

USER  
LOGIN

Operator

Press



HOME

0.0 A

PROGRAM

**Stopped  
Tank Draining In Progress.  
Wait For Tank To Empty  
To Continue.**

Step #

Action Name

Pressure

Current

Setpoint

Complete

Total

TIME  
Left

0

Ready

0.0

0

0

0

0

0

Man

Prg

Cnt

Eng

2016/10/19 (WED) 15:42:12

OMRON

POWER

USER  
LOGIN

Operator

HOME

Press



0.0 A

PROGRAM

**Stopped. No Chemical Flow.  
Close Main Water Valve.  
Leave Machine On.  
Call Maintenance.**

Step #

Action Name

Pressure

Current

Setpoint

Complete

Total

TIME  
Left

0

Ready

0.0

0

0

0

0

0

Man

Prg

Cnt

Eng

2016/10/19 (WED) 15:40:51

OMRON

POWER

USER  
LOGIN

Operator

HOME

Press



0.0 A

PROGRAM

**Stopped.  
Lid Opened While Cycle  
In Progress.  
Cycle Aborted For Safety.**

Step #

Action Name

Pressure

Current

Setpoint

Complete

Total

TIME  
Left

0

Ready

0.0

0

0

0

0

0

Man

Prg

Cnt

Eng

2016/10/19 (WED) 15:40:20

OMRON

POWER

USER  
LOGIN

Operator

Press



HOME

0.0 A

PROGRAM

**Cycle Completed Successfully.  
Please Open The Lid To  
Load Or Press Start For  
Rinse Cycle.**

Step #	Action Name	Pressure	Current	Setpoint	Complete	Total	TIME Left
0	Ready	0.0	0	0	0	0	0

Man

Prg

Cnt

Eng

2016/10/19 (WED) 15:39:56

OMRON

POWER

USER  
LOGIN

Operator

Press



HOME

0.0 A

PROGRAM

Lid Closed.  
Press Start For  
Cycle.

Step #	Action Name	Pressure	Current	Setpoint	Complete	Total	TIME Left
0	Ready	0.0	0	0	0	0	0

Man

Prg

Cnt

Eng

2016/10/19 (WED) 15:39:30

OMRON



POWER

USER  
LOGIN

Operator

HOME

Press



0.0 A

PROGRAM

**Water Pressure  
Rectified. Please Press  
Start To Continue.**

Step #	Action Name	Pressure	Current	Setpoint	Complete	Total	TIME Left
0	Ready	0.0	0	0	0	0	0

Man

Prg

Cnt

Eng

2016/10/19 (WED) 15:36:17

OMRON

POWER

USER  
LOGIN

Operator

HOME

Press



0.0 A

PROGRAM

Machine Is Resetting  
And Will Continue  
Operation Shortly.

5

Step #

Action Name

Pressure

Current

Setpoint

Complete

Total

TIME Left

0

Ready

0.0

0

0

0

0

0

Man

Prg

Cnt

Eng

2016/10/19 (WED) 15:33:07

OMRON

POWER

USER  
LOGIN

Operator

HOME

Press



0.0 A

PROGRAM

Chemical Pump  
Priming. Cycle Will  
Continue Shortly.

14

Step #	Action Name	Pressure	Current	Setpoint	Complete	Total	TIME Left
0	Ready	0.0	0	0	0	0	0

Man

Prg

Cnt

Eng

2016/10/19 (WED) 15:32:24

OMRON

POWER

USER  
LOGIN

Operator

Press



HOME

0.0 A

PROGRAM

**Paused.**  
**Water Pressure Too Low**  
**For Operation. Please**  
**Rectify To Continue.**

Step #	Action Name	Pressure	Current	Setpoint	Complete	Total	TIME Left
0	Ready	0.0	0	0	0	0	0

Man

Prg

Cnt

Eng

2016/10/19 (WED) 16:05:46

OMRON

POWER

USER  
LOGIN

Operator

Press



HOME

0.0 A

PROGRAM

**Paused.**  
**Phase Failure Relay**  
**Activated. Press Start**  
**To Continue.**

Step #	Action Name	Pressure	Current	Setpoint	Complete	Total	TIME Left
0	Ready	0.0	0	0	0	0	0

Man

Prg

Cnt

Eng

2016/10/19 (WED) 15:35:20

OMRON