

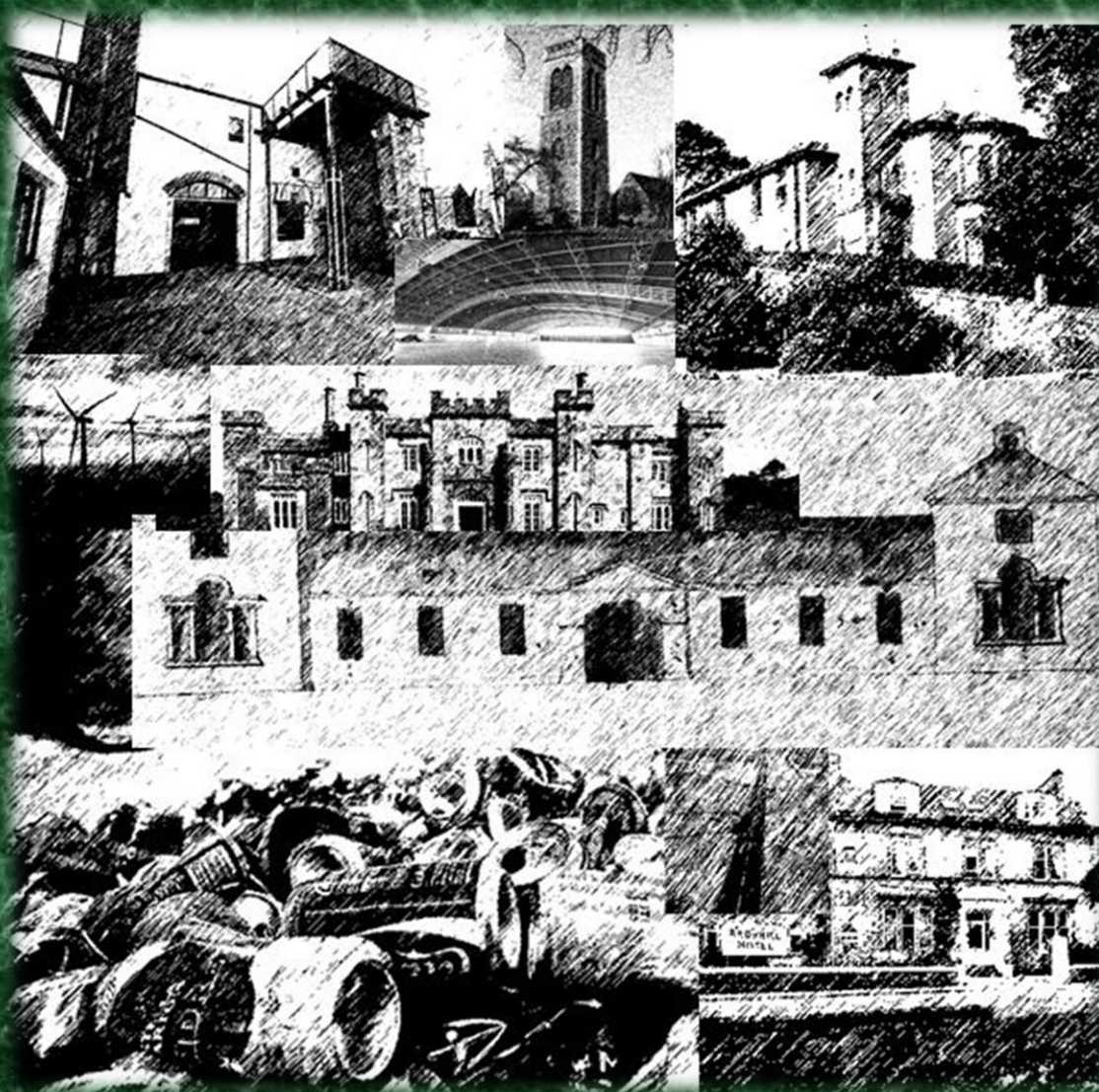
INVERARAY TO CAMPBELTOWN

Argyll & Bute

DOORS OPEN DAYS

Get into buildings

Saturday 26th and Sunday 27th September 2015



Advancing
Sustainable
Development
and Regeneration

SKDT

South Kintyre Development Trust

Welcome to Doors Open Day in Argyll

South Kintyre Development Trust is delighted to be coordinating Argyll & Bute's Doors Open Day, Scotland's largest free annual architectural event which takes place in September each year.

Doors Open Day takes place throughout Scotland and is part of European Heritage Days, giving free access to places that are normally closed to the public. Some open up once a year, some just once in a lifetime. Information about the national programme can be found at www.doorsopendays.org.uk

As this is the first time we have co-ordinated the event, our programme has a distinct Kintyre flavour. We hope it will entice visitors to explore our beautiful peninsula, stopping off at other places of interest along the way – for some suggestions see our Castles and Chapels Map on page 11.

We are also delighted to have attracted interest from further north where visitors will find more interesting venues to enjoy in Inveraray and Rosneath. These include the enchanting Retreat garden and artist's studio in Kilcreggan, and the Duke of Argyll's archive at Inveraray Castle, where visitors have a rare opportunity to see treasures from one of Scotland's most important private archives.

There are lots more exciting highlights in this year's programme which would not have been possible without the support of so many participants who were willing to open their doors and give up their time for free.

Let's hope we can make this an annual event which will grow each year, benefitting the local community and drawing others to the area.

SKDT is a community anchor organization and registered charity, led by volunteers who want to make a difference. We have recently saved Campbeltown's magnificent 18th century Town Hall, which will become a community space to be used by EVERYONE!

£2.2 million of funding from The Big Lottery, Campbeltown THI, Argyll and Bute Council CHORD and Historic Scotland has been received to help secure the future of the building and reopen it as a multi-purpose facility and focal point for community activities.

Unfortunately it is not quite ready for this year's Doors Open Day but we look forward to including it in next year's programme!

We hope you enjoy your journey around Inveraray and Kintyre and will share your experiences on our Facebook page
<https://www.facebook.com/SKDT.org>

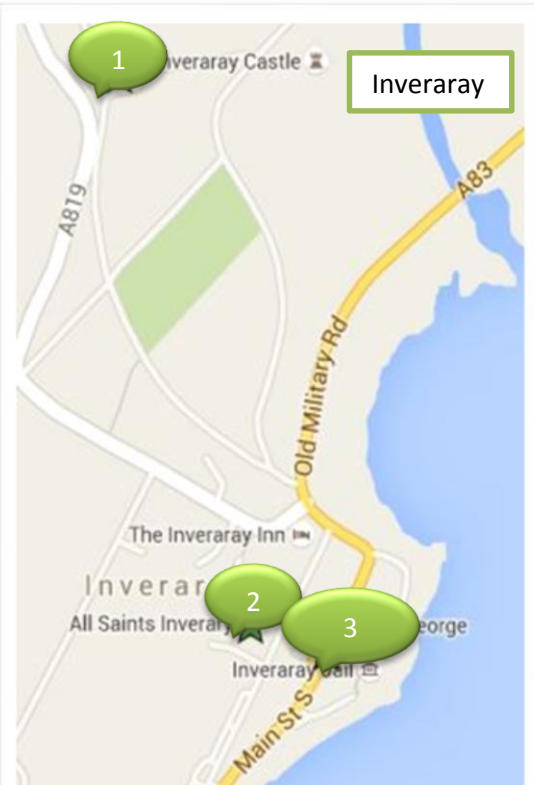


This programme was produced and distributed by South Kintyre Development Trust. Every effort has been made to ensure the information in this brochure was correct at time of print.

For up to date information please check the national website www.doorsopendays.org.uk

MAP OF VENUES 2015

An interactive map can be viewed at <https://www.google.com/maps/d/edit?mid=z01ltykNLezA.kGAiuttYeso>
 You will also find a link on the skdt page <http://www.skdt.org/#!doors-open-day/c18uq>



1. The Argyll Papers
2. Inveraray Bell Tower
3. Inveraray Church
4. The Retreat, Kilcreggan
5. Royal Castle of Tarbert

6. Wind Towers, Machrihanish
7. Machrihanish Airbase
8. Kintyre Recycling
9. Ardshiel Hotel
10. Campbeltown Museum

11. Craigard House Hotel
12. Springbank Distillery
13. Torrisdale Castle
14. Dunaverty Hall

INVERARAY VENUES



Opening Times – Saturday 26th Sep 2015

Guided tours 2.00pm & 3.30pm – max 12 per tour

Booking essential - contact Ishbel MacKinnon by e-mail (archives@inveraray-castle.com) or telephone Argyll Estates Office (01499 302 203 – state you are making a DOD booking).

The Inveraray Conservation Area Regeneration Scheme (CARS) will also have a stand at the Nicol Hall, Church Square, from 12.00pm to 4.00pm providing information about the programme of repair and restoration to the historic fabric of Inveraray Conservation Area, the architectural history of Inveraray, conservation advice and Historic Scotland publications etc. Contact: Feargal de Buiteléir, Inveraray Conservation Area Regeneration Scheme (CARS) Officer. Phone 01546 604549 or Mobile 07920817681

THE ARGYLL PAPERS

1

Cherry Park, Inveraray, PA33 8XE

The Argyll Papers is the family and estate archive of the Campbell family, dukes of Argyll. One of the most important private archives in Britain, it is a rich resource for Scottish and British history from the 13th to 21st centuries, and attracts researchers from all over the world. A small selection of the archives' treasures will be on display, themed around Argyll's built, industrial and landscape heritage.

The archive is housed in Cherry Park, an elegant 18th century Palladian style farm steading, designed for the 5th Duke of Argyll by John Adam and Robert Mylne, with some early 19th century alterations by Joseph Bonomi.



Inveraray
CARS

INVERARAY BELL TOWER

All Saints Episcopal Church, Inveraray, PA32 8YX

2



Opening Times – Saturday 26th Sep 2015

Guided Tours 12.00 noon, 1pm & 2pm

Booking essential – max 12 per tour

Contact: 01546 604549 to reserve a place

Inveraray Bell Tower is the 10th Duke of Argyll's memorial to members of the Clan Campbell and all those who lost their lives in the Great War. It was designed by Hoare and Wheeler of London and built by George Reid of Catrine, Ayrshire. It contains the heaviest ring of ten bells in Scotland, which are enjoyed by bell ringers from all over the world. The tower's viewing platform offers magnificent views of Inveraray and Loch Fyne.

Bell ringers will give guided tours explaining the history of bell ringing, the Bell Tower and All Saints Church. There will also be an opportunity to see the town from the viewing platform on the tower's roof.

www.inveraraybelltower.co.uk

INVERARAY CHURCH

3

Main Street, Inveraray, PA32 8TX



Opening Times – Saturday 26th Sep 2015

The Church will open for tours throughout the day

Inveraray Church was designed and built by Robert Mylne between 1795 and 1802. It was built to house two congregations, the English, or Lowland Church, and the Gaelic, or Highland Church - a solid wall separated the two.

In 1957 the Gaelic Church was converted into a Church Hall and its gallery was enclosed to form the Paul Fraser Memorial Chapel, named in honour of Reverend Doctor Paul Fraser, author of the parish Statistical Accounts of 1793, who was minister here when the Church was built. The English Church was remodelled in 1898 under instruction of Duchess Ina, the third wife of the Eighth Duke of Argyll.

www.inveraraychurch.org.uk

Another place you might enjoy visiting on your journey to Inveraray is

THE RETREAT KILCREGGAN

Argyll Road, Kilcreggan, G84 0JW



Opening Times – 26th & 27th Sep 2015

11am to 4pm. Entry from Temperance Brae
beside the bus stop off Shore Rd.

The Retreat is an early Victorian domestic dwelling built around 1860, located on the Rosneath Peninsula within the Victorian burgh of Cove and Kilcreggan.

The garden is designed around a dramatic gully with a serpentine path which follows Aiden's burn for some 930 feet as it runs out into the Firth of Clyde. The garden is in contrast with the house itself which though small in scale offers pleasing architectural features whilst carrying a unique social history. As the restoration continues the next stage will be the conversion of an outbuilding into an artist's studio and gallery.

Pop up kitchen serving free coffee, tea and homemade scones. Donations welcome.

ROYAL CASTLE OF TARBERT

Tarbert, PA29 6UF



Opening Times – 26th & 27th Sep 2015

Guided Tours at 11am both days

From the 13th century or earlier, Tarbert Castle has guarded the anchorage in the bay, below, and controlled the land link between East and West Lochs Tarbert. It has been a Royal Castle since at least 1292, when it was granted to John Balliol by Edward I of England. In 1325 Robert the Bruce enlarged and fortified the Castle and in the 16th c the prominent tower-house was added, which still commands the village skyline today. The impressive ruin has recently been conserved by the local community and the grounds are grazed by a flock of Hebridean sheep. A new interpretation trail guides visitors around the site.

Park in village and meet at bottom of castle access steps behind fish quay – outdoor clothing advised – No disabled access. Tour should take ½ hr offering splendid views over village and Loch Fyne. There is a Community Woodland and sculpture walk to be enjoyed adjacent to Castle. www.tarbertcastle.info

CAMPBELTOWN VENUES

WIND TOWERS MACHRIHANISH

Machrihanish, Campbeltown, PA28 6NU

6



Opening Times – Sat 26th Sep 2015

Open 1pm to 3pm Mini Tours

max 4 people at 1pm, 1.30pm, 2pm & 2.30pm

Booking essential. Tel: 01586 555000

Visit Wind Towers for a fascinating insight into one of Scotland's newest industries. This world class manufacturing site at Machrihanish provides "ready to install" tower solutions for the onshore and offshore wind energy market. It also provides services for the repair and modification of turbine tower sections, and fabricates mono-pile sections and other large steel components for the renewable energy sector. It employs around 135 people from the local area.

You might also like to visit Campbeltown Community Orchard & Garden located at Auchinlee Eventide Home, High Askomil, Campbeltown.

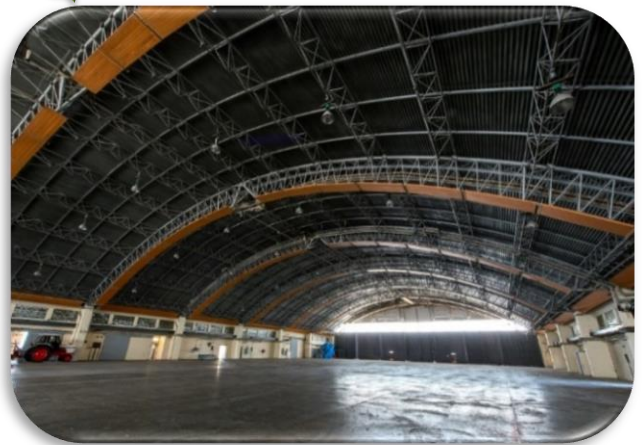
Visit, volunteer, sit, dig, picnic, play, weed, plant, photograph, wildlife watch, paint, work, relax! www.ccog.org.uk

Open week days only. Free entry.

MACHRIHANISH AIRBASE

Machrihanish, PA28 6NU

7



Opening Times- Sat 26th Sep 2015

Open 10am to 4pm

Tours at 11am & 2pm

A rare opportunity to explore part of Scotland's military history at the former RAF Machrihanish in Kintyre. The 1,000 acre site boasting a 10,000ft runway is operated by Machrihanish Airbase Community Company (MACC) it is home to around 50 private and commercial tenants ranging from a 50m indoor shooting range to a Wind Tower Factory. Tour the site and explore buildings including a former US Navy SEAL training facility, the old Station Headquarters and the Gaydon hangar (the subject of many conspiracy theories). Not to be missed.

Starting at the former Station Headquarters, the tour will show off some of the key buildings and areas on site and conclude at the shooting range, where Owston Grange will provide a shooting demonstration and (depending on numbers) people will then have the chance to "have a go".

www.machrihanish.org

8

KINTYRE RECYCLING

67 Glebe Street, Campbeltown, PA28 6LR



Opening Times- Saturday 26th Sep 2015
10am to 4pm

Kintyre's local recycling unit is opening its doors at 67 Glebe Street, giving visitors an opportunity to see what happens to our household recycling after it is collected from our doorsteps. View the sorting processes, the machinery used and the end product. There will also be a chance to see pictures and diagrams of its new premises and find out about hopes and plans for the future..

www.kintyrerecycling.com

9

ARDSHIEL HOTEL

Kilkerran Road, Campbeltown, PA28 6JL



Opening Times – Sat 26th Sep 2015
10.30am to 1pm

The Ardsziel Hotel was once home to one of Campbeltown's wealthy distilling families. It was designed and built in 1877 by prominent Victorian architect, John Burnet Senior, and over the past four years has been lovingly restored to its former glory – visitors can enjoy many of its original features and find out about its connections with the town's distilling history.

www.ardshiel.co.uk

10

CAMPBELTOWN MUSEUM

Shore Street, Campbeltown, PA28 6BS



Opening Times – Sunday 27th Sep 2015
Special weekend opening from 11am to 2pm

Campbeltown Museum is housed in the magnificent Burnet Building designed by architect John James Burnet. The bas-relief sculptures on the exterior illustrate the industry of Kintyre including ship-building, distilling and mining. This story continues inside with objects and artworks linked to Kintyre's industrial heritage.

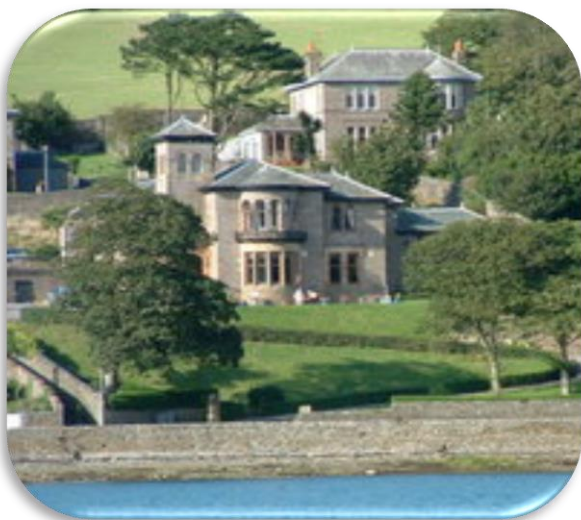
You might also like to visit The Linda McCartney Memorial Garden, beside the Museum.

Burnet's original design included a loggia opening to a sheltered inner garden. The garden is open between 9.00 am to 5.00 pm (Mon to Fri) and 10.00 am to 4.00 pm (Sat and Sun.)

11

CRAIGARD HOUSE HOTEL

Low Askomil, Campbeltown, PA28 6EP



Opening Times – 26th & 27th Sep 2015

12noon to 3pm (Mainly public rooms,
bedrooms dependent on availability).

Craigard House was built in 1882 in the Italianate style, popular at the time. It was designed by architect, Henry Clifford, for local Whisky Distiller, William McKersie and remained in the same family until 1942, when it was purchased by the local Council to become a Maternity Home, which ran until 1973.

www.craigard-house.co.uk

Babies of Craigard' and 'Mothers of Craigard' Record Books will be prominently displayed in Reception.

This weekend also coincides with

World War One Roadshow

At Campbeltown Library

On Fri 25th Sep 7pm

And Sat 26th 10am to 1pm

12

SPRINGBANK DISTILLERY

Glebe Street, Campbeltown, PA28 6LR



Opening Times – Sunday 27th Sep 2015

Tour times (lasting 30-60min)

12.30pm, 1.30pm, 2.30pm and 3.30pm

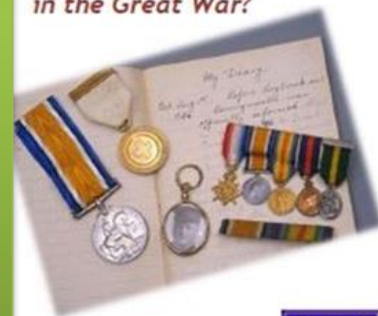
Springbank was established in 1828 and is the oldest independently owned distillery in Scotland - currently in the hands of the great, great grandson of the original owner. It is unique among Scotland's distilleries as it is the only one to undertake 100% of the distilling process on the one site, with human involvement at every stage of the process.

www.springbankwhisky.com

Meet at Cadenhead's Whisky Shop and return there at the end of the for a small dram of the famous Springbank 10 year old

You may also
want to visit
Commemoration
of the Battle of
Loos Exhibition
at the Victoria
Hall Sat 26th Sep
2015 10am to
1pm

*What did your family do
in the Great War?*



www.scotlandswar.ed.ac.uk



13 TORRISDALE CASTLE

13

Torrisdale, Carradale, PA28 6QT



www.torrisdalecastle.com

Opening Times – Sunday 27th September 2015

Tours 12noon, 1pm, 2pm, 3pm & 4pm

In 1815 General Keith Macalister began the construction of Torrisdale Castle. He employed the services of James Gillespie Graham, one of Scotland's most famous architects. William Macalister Hall, Peter's son, purchased the estate and extended the castle in 1903 and 1908 respectively, utilising the services of architect Henry Clifford. The estate remains in the ownership of the Macalister Hall family.

Tours include main living area & new holiday apartment. Sheepskin tannery will be open and walks available within the grounds for those waiting to tour.

Around Torrisdale Bay are a number of ancient cairns and among the dunes on the far side of the river are some ancient hut circles, enclosures and cists.

14

DUNAVERTY HALL

Southend, By Campbeltown, PA28 6RW



Opening Times – Sun 27th Sep 2015
1.30pm – 3.30 pm

Dunaverty's new Community Hall replaces the old Drill Hall of 1913, which became the Village Hall for Southend in 1965. Visitors will have a chance to find out how the local community's perseverance and hard work has resulted in this splendid

new building which will become the hub of the village for the community and visitors, alike. Plans include a Post Office, meeting and leisure facilities with changing rooms, heritage room and community garden

You might also like to visit Dunaverty Rock

The site was once a fort belonging to the [Clan Donald](#) (MacDonald). The remains stand on a rocky head land which forms a natural stronghold with the sea on three sides and is only approachable from the north. It is attached to the mainland only by a narrow path. It is known that the castle itself was accessed by a drawbridge.

A little further round Southend you will discover Keil Caves, which were occupied for centuries. Nearby you'll find St Columba's Chapel, St Columba's Well and St Columba's Footprints, a reminder that this is where he landed in Scotland in 563.

KINTYRE'S MEDIEVAL CASTLES AND CHAPELS

Kintyre has a fascinating and nationally important collection of castles, chapels and burial grounds, dating from pre-history to the recent past - we have highlighted the most accessible and interesting sites on this map. All are open to the public, free of charge, all year round, so why not make the most of your Doors Open Day trip and visit some of these places at the same time? A circular tour of the peninsula is just about do-able in a single day, or you could make a weekend of it and soak up the sites, scenery and coastal views at your leisure.

These can also be viewed on the interactive online map -

<https://www.google.com/maps/d/edit?mid=z01ltykNLezA.kGAiuittYeso>

1. St Cathan's Old Parish Church, Gigha
2. Killean Old Parish Church (St John's Church)
3. Kilkivan Old Parish Church
4. Kilchenzie Old Parish Church (St Kenneth's Chapel)
5. A'Chleit Church (Killean and Kilchenzie Parish Church)
6. St Columba's Church and priest's well, Southend
7. Dunaverty Castle, Southend
8. Kilchousland, Old Parish Church
9. Saddell Abbey
10. Kilbrannan Chapel and burial ground, Skipness
11. Skipness Castle



Special thanks go to:

The Directors of SKDT who encouraged our participation.

Campbeltown and Inveraray CARS projects who helped with information and contributed toward the print costs.

Will Anderson Photography for image no 12

Kate Singleton who gave her advice

The participants of this year's event who did not complain when we badgered them (not once!) and who gave up their time to open their doors for free.

To everyone who is anticipating this event or has already taken part – We hope you enjoyed it and thanks for coming – see you next year!

CAMPBELTOWN CARS

Argyll and Bute Council recently secured funding for a second Campbeltown Conservation Area Regeneration Scheme (CARS). The grant scheme runs from April 2015 until March 2020 and will repair key town centre tenement buildings and shops, improving people's homes and safeguarding over 70 jobs. In addition to this there will be a small grant scheme and training opportunities for local stakeholders of the historic built environment. For more information contact: James Lafferty, Campbeltown CARS Officer, on 01586 559048 or email james.lafferty@argyll-bute.gov.uk

Area Coordinator Details:

South Kintyre Development Trust

3 Harvey's Lane

Burnside square

Campbeltown

PA28 6GE

Tel: 01586 552780

Email: info@skdt.org

Website: www.skdt.org

