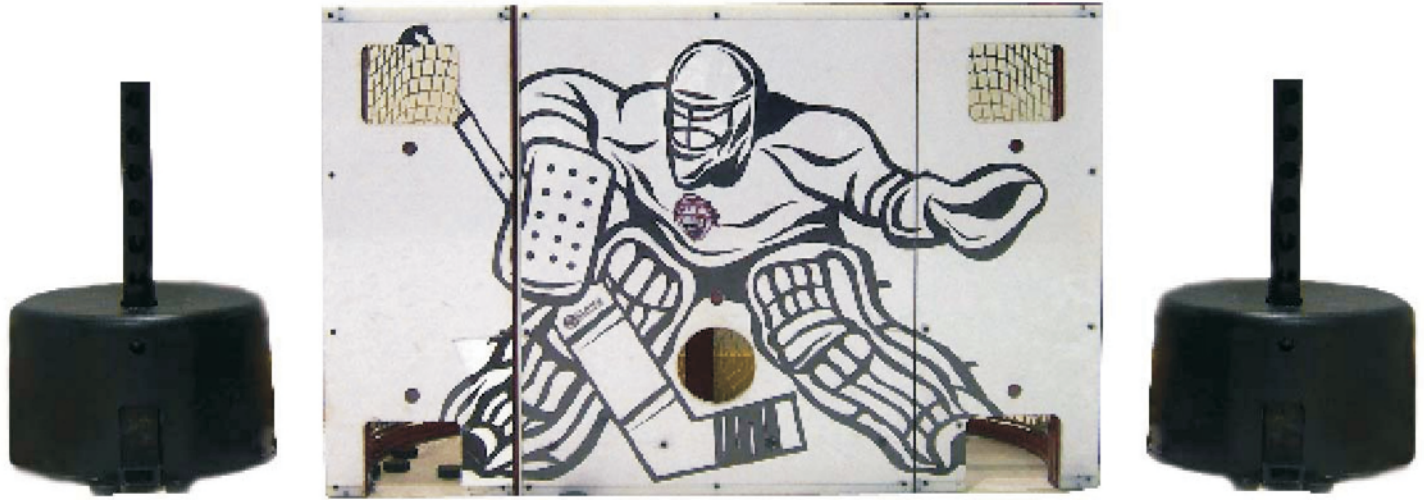


PRECISION SHOOTER





NET

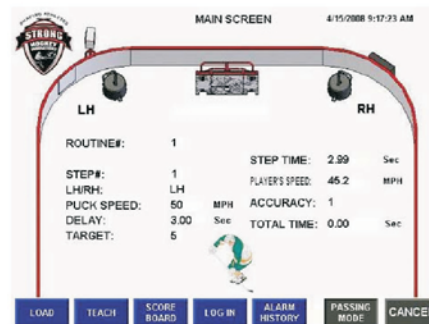
- Epoxy painted regulation size smart net
- light sensors and LED indicators
- radar gun
- access door that allows easy access to retrieve pucks from in the net
- intended target illuminates

PUCK PASSER

- holds 40 pucks
- adjustable functions- passer or shooter
- non-breakable cover
- wheels for easy maneuverability

COMPUTER PROGRAM

- user can easily create programs
- user can set the passing speed
- user can set time intervals between each pass
- records and tracks results for accuracy, time of release and the speed of the shot for each individual
- trainer interface touch screen computer and stand
- one RFID scanner



SCORE BOARD

RECORD #: 1

ROUTINE #: 1

TOTAL TIME: 19.99 Sec

STEP	LH/RH	PUCK SPEED	DELAY	TARGET	TIME	PLAYERS SPEED	ACCURACY
1	0	50	3.00	5	2.99	0.0	1
2	0	40	2.50	2	2.50	0.0	2
3	0	45	2.00	4	2.00	0.0	0
4	0	50	2.00	3	2.00	0.0	2
5	0	35	2.50	1	2.50	0.0	1
6	0	30	3.00	5	3.00	0.0	1
7	0	45	4.00	3	4.00	0.0	1
8	0	0	0.00	0	0.00	0.0	0
9	0	0	0.00	0	0.00	0.0	0
10	0	0	0.00	0	0.00	0.0	0

Buttons: FIRST, PREV, NEXT, LAST

GOALIE OPTION

Individually the puck passers are programmed to shoot on goal tenders via an automatic vertical oscillation

The Strong Precision Shooter

The Precision Smart Net passing and shooting zone will be used to develop shooting skills, speed, pass to shot response, accuracy and hand eye coordination. This station will pass pucks from one of two automated puck passing devices. Once the pass is received, the player will shoot the puck at one of five windows as prompted by a light at each of the windows. The passing speed, shot response time, shot speed and accuracy will be tracked on a per puck basis. All data collected within this station can be sent via RFID to the data collection system for further analyzing.