

MJKZZ Water Drop Photography Kit Frame Setup

Steps

- Learn the basics described below
- When assembling, before final stage, **DO NOT tighten screws YET**
- Assemble it piece by piece on flat surface, such as floor
 - Assemble the base with right angle joint techniques
 - Assemble the side bars from 3 33.3cm bars
 - Assemble valve mounting bars (two of them), make sure square screw inserts are inside aluminum extrusion, otherwise, there is no way to do so and it has to be disassembled again.
 - Assemble the top bottle mounting bar, make sure all square screws inserts are slided into the extrusion.
 - Assemble the gantry, make sure the square screw inserts are inside the bars
 - Assemble the base and gantry together, the best way is to mount the right angle bracket on the gantry legs first, then connect them.
- Once all are assembled together, **tighten all screws so that the structure is rigid and solid.**

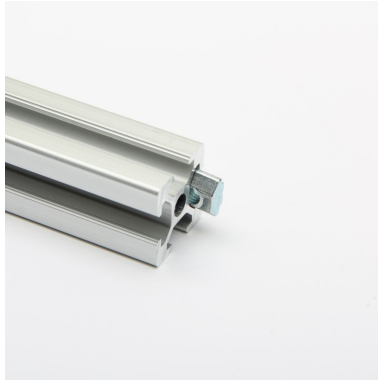
All aluminum extrusion bars are cut to precision of 0.5mm margin of error, so it is important not to tighten the screws, just enough to join all connections together, otherwise, it is very hard to move and adjust anything.

Basics

M5 Square Screw Insert



M5 Square Nut Inside Extrusion Bar



Top view



Connecting Two Extrusion Bars At Right Angle

It is much helpful later that all screws are left loose, they are tightened at last stage

Preparation Mounting Right Angle Connector



Mounting Right Angle Connector



Hexagon Wrench, do not tighten the screw at this stage, just enough to secure the right angle connector at its place.



Another View, again do NOT tighten all screws



Finished Joint -- make sure all edges are flush and then tighten up all screws



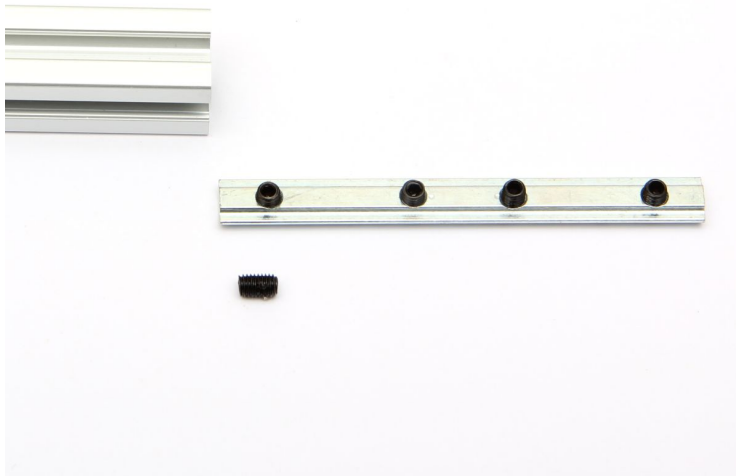
Preparation Of Valve Bracket Mounting Bars

It is very important to put six square nuts inside T-slot of the two extrusions used to mount valves because otherwise, there is NO way to do so when they are assembled with vertical side bars

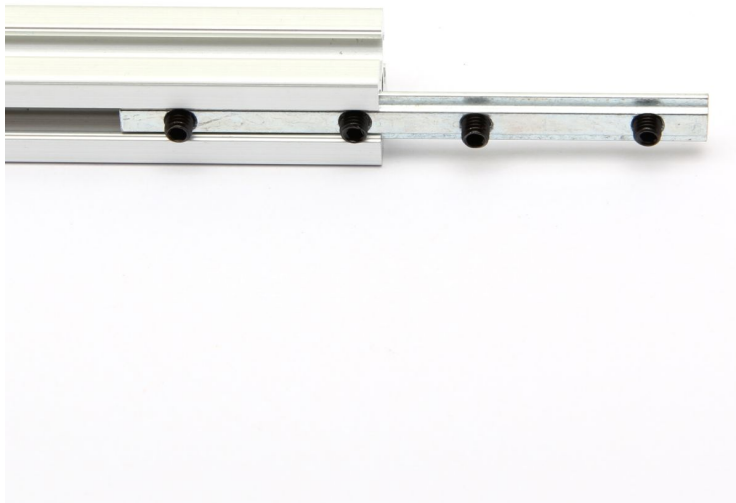


Assembling Side Bars

Putting screws into cast iron connection bar -- four screws each



Slide cast iron connection bar in



Two cast iron connection bars are needed for each joint



Make sure the joint is as close as possible. These aluminum extrusion bars are precision cut with 0.5mm (0.02 inch) margin of error, so please inspect joint visually.

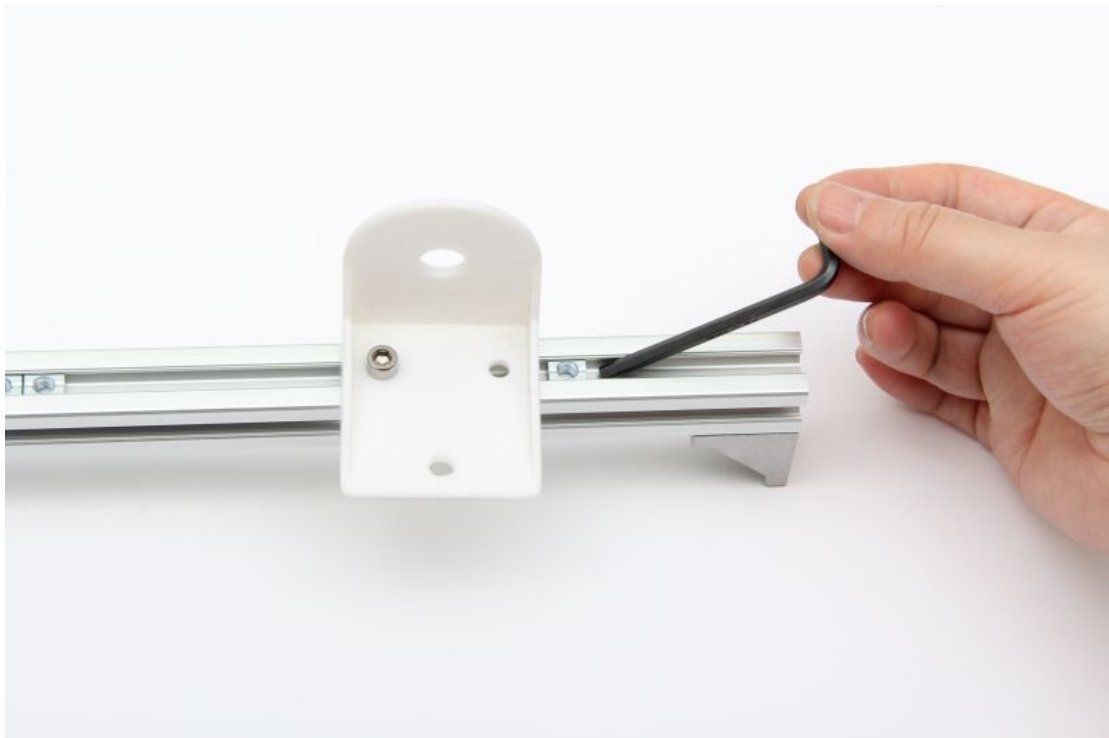


Assembling Top Bar for Bottles

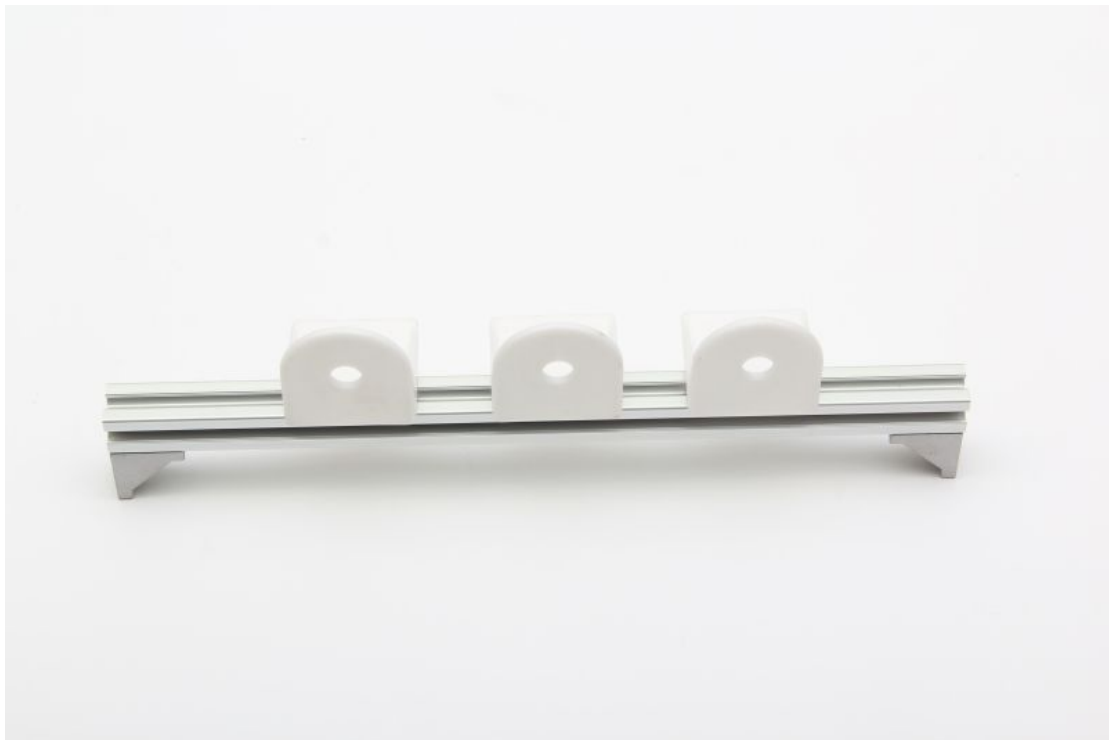
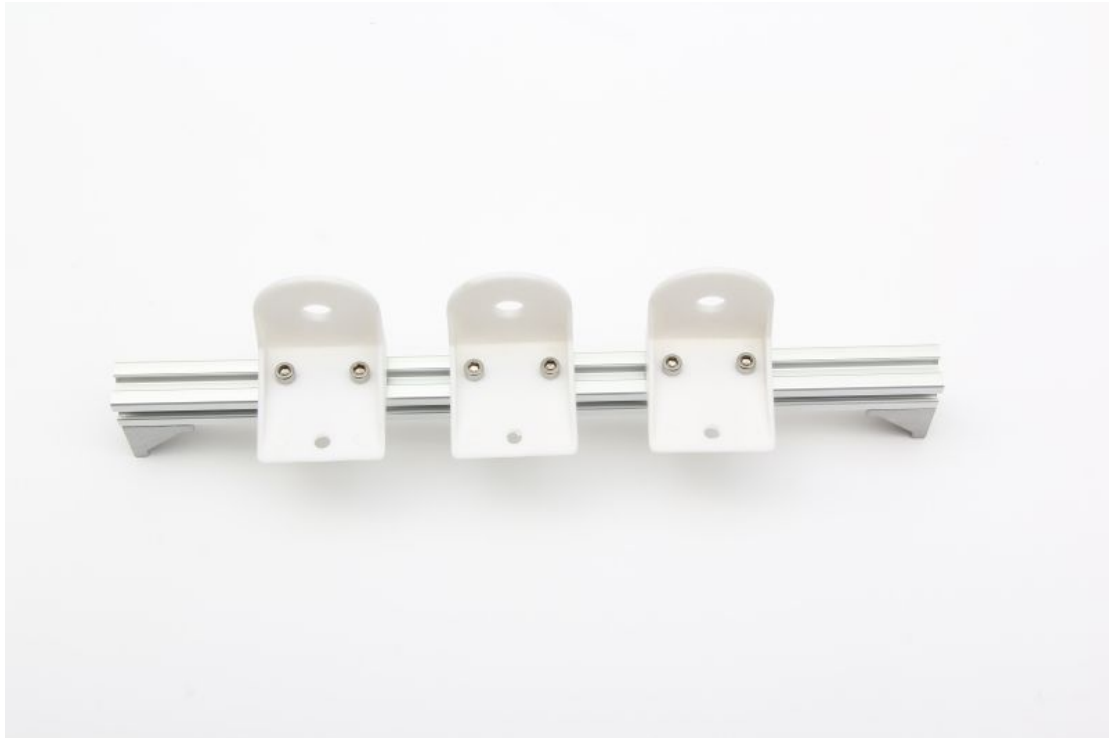
Assembling the top bar



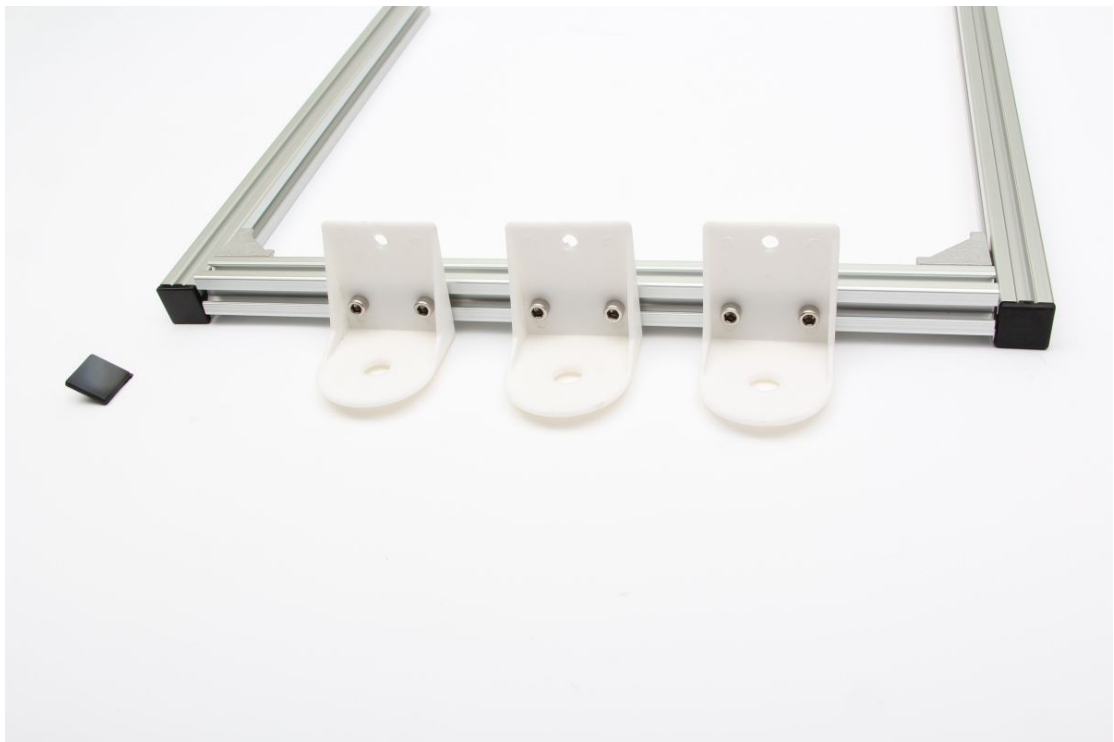
Mounting Right Angle Bracket



Assembled Top Bar



Assembled Gantry



Mounting Controller

Note: Two washers are used because there is not shorter M5 screws



