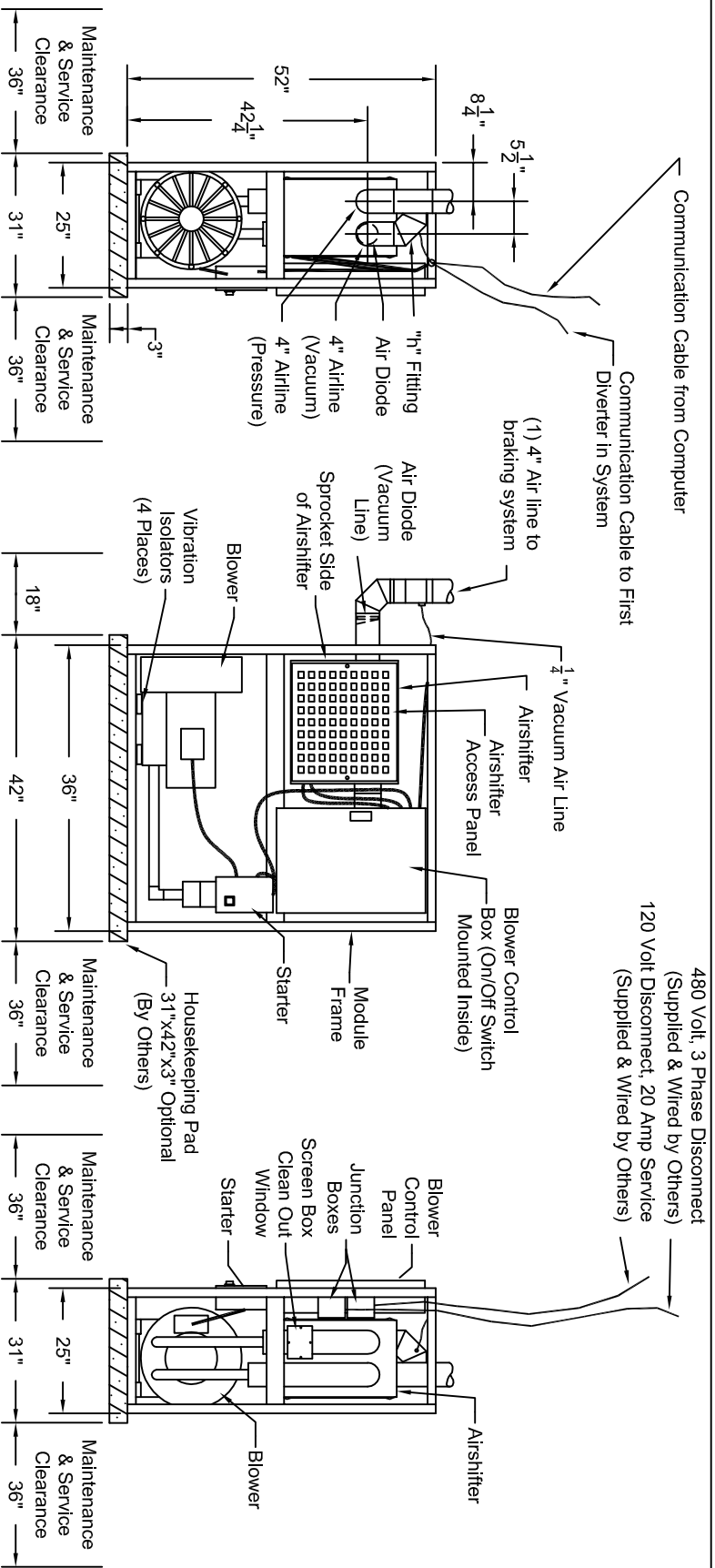


This drawing is property of Pevco Systems International, Inc. It may not be copied or exhibited without written permission.



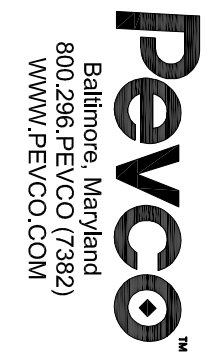
AIRLINE-END VIEW

BLOWER CONTROL BOX SIDE VIEW

SCREEN BOX-END VIEW

| | | | | | |
|------------|------------|------------|------------|------------|----------|
| 220 VOLTS | 208 VOLTS | 440 VOLTS | 480 VOLTS | HORSEPOWER | WEIGHT |
| FLC-25.0 A | FLC-27.3 A | FLC-12.5 A | FLC-12.5 A | 10.0 | 718 lbs. |

480 VOLT, 40 AMP CONNECTION IS PREFERRED. ** VERIFY POWER WITH ELECTRICIAN. **
 HOUSEKEEPING PAD IS OPTIONAL (BY OTHERS).
 A MINIMUM CLEARANCE OF 36" (THREE SIDES) & 18" (ON THE FOURTH SIDE) IS REQUIRED FOR MAINTENANCE & SERVICE ACCESS.
 THIS UNIT IS NOT DESIGNED TO BE HUNG. RECOMMENDED LOCATION IS IN A MECHANICAL ROOM.



BLOWER MODULE
w/ OPTIONAL HOUSEKEEPING PAD
 6" COMPUTERIZED PNEUMATIC TUBE SYSTEM

| | | |
|----------------|----------|----------|
| SCALE | NONE | DATE |
| DRAWN | SDW | 05.01.00 |
| REVISED | SDW | 05.01.04 |
| | SDW | 10.22.07 |
| DRAWING NUMBER | PEV225.2 | REVISION |
| | | 5 |