



# PURNAA

FALL 2015





# PURNAA *Fall 2015*

**Hi!** Welcome to PURNAA. We are excited to share our Fall 2015 Collection of ethically made and environmentally friendly styles with you. At PURNAA, we believe in making timeless pieces. In this collection we incorporate subtle Nepali accents and use fabrics that are environmentally sustainable to make items you will want to wear for many years to come. Our products are made in a beautiful, “not-a-sweat-shop”, manufacturing unit in Kathmandu, Nepal.

PURNAA is a social enterprise that exists to empower those most marginalized by society to fresh starts and fulfilled lives. We do this by offering training and employment to survivors of exploitation and those previously discriminated against because of caste, religion or disease.

In this catalog we hope to exhibit beauty; not only through our designs, but also through the opportunities created for those once rejected by society.

Thanks for taking a look.

*Corban Bryant & Preston Thiessen*

PURNAA Directors and Founders







## BISHNU OVERSIZED T-SHIRT

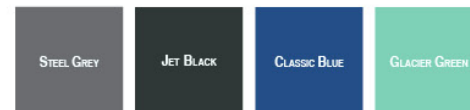
#110025

MSRP: USD 45

**DESCRIPTION:** Long-sleeve, bat-wing top in luxurious bamboo/organic cotton with soft and flowing gauze accent panels

**MATERIAL:** Body: 70% Bamboo/30% Organic Cotton; Trim: 100% Lyocell

**SIZES:** S, M, L, XL





**PAWANA T-SHIRT**

#110008

**MSRP: USD 35**

**DESCRIPTION:** Slightly slim fit, round neck, traditional Nepali fabric accented pocket, in super soft and infinitely wearable bamboo/cotton.

**MATERIAL:** Body: 70% Bamboo/30% Organic Cotton; Pocket: 100% Bamboo

**SIZES:** S, M, L, XL



**ABINA BOYFRIEND T-SHIRT**

#110014

**MSRP: USD 38**

**DESCRIPTION:** Flattering v-neck, loose fit, supremely soft, and comfortable bamboo/cotton.

**MATERIAL:** Body: 70% Bamboo/30% Organic Cotton

**SIZES:** S, M, L, XL



**URMILA CARDIGAN**

#150026

**MSRP: USD 50**

**DESCRIPTION:** This long sleeve cardigan features a flowing, comfortable draped front, and is made from ultra-soft bamboo/organic cotton.

**MATERIAL:** Body: 70% Bamboo/30% Organic Cotton; Trim: 100% Lyocell

**SIZES:** S, M, L, XL







PRIYA TUNIC

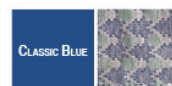
#130016

MSRP: USD 50

DESCRIPTION: Traditional Nepali Dhaka material with soft bamboo/cotton body.

MATERIAL: Body: 70% Bamboo/30% Organic Cotton; Accent: 100% Bamboo

SIZES: S, M, L, XL







## RAMA HOODIE

#110023

MSRP: USD 90

**DESCRIPTION:** We argue that this is the world's best hoodie. A comfy basic with a fashion twist. It features a cowl-neck hood and leather accented pockets and is made of super plush organic bamboo cotton.

**MATERIAL:** Body: 70% Bamboo/30% Organic Cotton Fleece

**SIZES:** S, M, L, XL

JET BLACK

CLASSIC BLUE

STEEL GREY



## SANGITA SWEATSHIRT

# 110024

MSRP: USD 65

**DESCRIPTION:** Unique Purnaa mountains in traditional Nepali material, capped with leather accent. Slim fit, crew neck.

**MATERIALS:** Body: 70% Bamboo/30% Organic Cotton Fleece

**SIZES:** S, M, L, XL

JET BLACK

CLASSIC BLUE

STEEL GREY





## KHUMBU SWEATER

#110037

MSRP: USD 270

DIMENSIONS: 32"W x 26"L (81cm x 66cm)

MATERIALS: Body: 100% Cashmere, 8 gauge

**DESCRIPTION:** A beautifully rounded hem adds movement to an ultra cozy V-neck sweater crafted from the finest cashmere. Wide ribbing at the cuff and hem. One size only.







ORDER BY: 1 MAR 2015

SHIPS BY: 15 JULY 2015



## DHAULAGIRI PONCHO

#110035

MSRP: USD 330

DIMENSIONS: 31"W x 35"L (79cm x 89cm)

MATERIAL: 100% Cashmere, 8 gauge

DESCRIPTION: A cozy lush cowl-neck cashmere poncho, accented with hand-made horn buttons. One size only.







ORDER BY: 1 MAR 2015

SHIPS BY: 15 JULY 2015



MAKALU SWEATER PONCHO

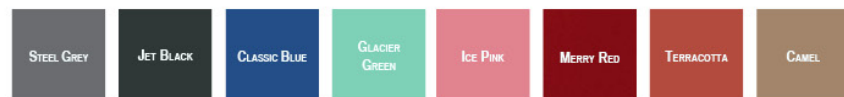
#110036

MSRP: USD 300

MATERIAL: 100% Cashmere, 8 gauge

DIMENSIONS: 32"W x 27"L (81cm x 69cm)

DESCRIPTION: Luxuriously soft cashmere and an oversized silhouette. Complemented with a flattering scoop neck and a side-slit hem. One size only.





## Ethical Employment & Social Mission

PURNAA is a social enterprise, which means that we gauge our success by the lives we impact. All of our profits are reinvested to further our social mission of creating training and job opportunities for survivors of exploitation and those discriminated against because of caste, religion, or disease. **Through business, we create sustainable, long-term solutions for engaging these most marginalized by society.**

“Purnaa” is a Nepali word that means “whole, complete and fulfilled.” Our employees receive more than just fair wages. In a safe and dignified workplace, we provide Nepali literacy and English classes; job-skills and life-skills training; health care; free access to professional counseling; and employer matched savings.

All Purnaa employees are also eligible for school scholarships for their children. In this way we equip the next generation to become less vulnerable to exploitation and to break free from the cycle of poverty.





**DADHI T-SHIRT**

#210009

MSRP: USD 35

**DESCRIPTION:** Slim fit, round neck, insulating and antimicrobial, all season, everyday t-shirt.

**MATERIAL:** Body: 70% Bamboo/30% Organic Cotton

**SIZES:** S, M, L, XL



**AMAN BASEBALL T-SHIRT**

#210017

MSRP: USD 45

**DESCRIPTION:** Slim fit, three quarter sleeve, baseball T. Made with naturally wicking and antimicrobial bamboo/organic cotton.

**MATERIAL:** Body: 70% Bamboo/30% Organic Cotton

**SIZES:** S, M, L, XL



**KHAN V-NECK T-SHIRT**

#210010

MSRP: USD 35

**DESCRIPTION:** Slim fit, v-neck t-shirt made with naturally wicking and antimicrobial bamboo/organic cotton. Accented with traditional Nepali fabric pocket.

**MATERIAL:** Body: 70% Bamboo/30% Organic Cotton

**SIZES:** S, M, L, XL





OMAN HOODIE

#210028

MSRP: USD 90

**DESCRIPTION:** This go to classic hoodie body complete with leather accents and pocket details, stands out as a great pullover. Made with wicking organic bamboo cotton that is softer with every wash, it feels cozy and insulated.

**MATERIAL:** Body: 70% Bamboo/30% Organic Cotton Fleece

**SIZES:** S, M, L, XL



SHOVAN CREWNECK

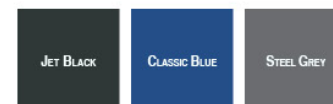
#210029

MSRP: USD 70

**DESCRIPTION:** This men's crew neck has a leather detail, slim fit, and a baseball sleeve. The organic bamboo cotton fleece keeps you warm and comfortable, and gets softer with every wash

**MATERIAL:** Body: 70% Bamboo/30% Organic Cotton Fleece

**SIZES:** S, M, L, XL







## Environmentally Sustainable Fashion

PURNAA means “whole or complete” and we always strive to live out our name by making a positive impact in the lives of our employees and the environment around us. In this collection, we use only environmentally sustainable materials.

**Bamboo and Organic Cotton:** Many of the tops and tunics featured in this collection are made with a luxe bamboo/organic cotton blend. Bamboo is among the most environmentally sustainable fibers; re-growing quickly and using less water and pesticide than cotton. The organic cotton is blended with the bamboo for long-lasting durability, but being organic it is free from environmentally damaging pesticides.

**Up-cycled Silk Saris:** The Kalpana scarf uses up-cycled saris, re-purposing a traditional garment worn by women in South Asia and giving new life to fabrics and reducing waste.

**Cashmere:** It not only feels luxurious, but is also more sustainable than most wools and synthetic alternatives. Durable and with little pilling, cashmere garments can last a lifetime, resulting in less waste and damage to the environment.

**Locally Sourced:** At Purnaa, we always look to source materials locally to minimize the carbon footprint of our manufacturing. In this collection, these Nepali touches are found in the re-purposed traditional, woven Dhaka fabrics, the hand-made water buffalo horn buttons, and brass coin trimming.





ORDER BY: 1 MAR 2015

SHIPS BY: 15 JULY 2015

## MAIYA BACKPACK

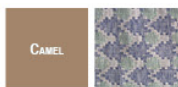
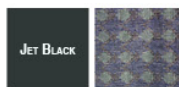
#560021

MSRP: USD 135

**DIMENSIONS:** 12"H x 11"W x 3"D  
(31cm x 28cm x 8cm)

**MATERIAL:** Body: 100% Cotton Canvas and Genuine Leather; Trim: 100% Bamboo

**DESCRIPTION:** Durable cotton canvas and genuine leather accented with traditional Nepali woven Dhaka. The main interior compartment, which has a zipper closure, fits most 13" laptops with room to spare. Includes exterior zip pocket under flap for easy and secure storage of small items. Adjustable length straps







ORDER BY: 1 MAR 2015

SHIPS BY: 15 JULY 2015



#### ANITA BAG

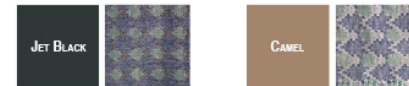
#560001

MSRP: USD 70

**DIMENSIONS:** 17.5"H x 13.25"W x 2"D (45cmx 34cmx 5cm)

**MATERIAL:** Body: 100% Cotton Canvas & Genuine Leather; Trim & Lining: 100% Bamboo

**DESCRIPTION:** Durable cotton canvas body, supported by genuine leather base and straps. Accented and lined with traditional Nepali woven Dhaka material. Includes interior pockets and exterior zip pocket. Closes with a magnet snap.



#### ENSEY CLUTCH

#560020

MSRP: USD 55

**DIMENSIONS:** 6.5"H x 9"W x 1.5"D (17cm x 23cm x 4cm)

**MATERIAL:** Body: 100% Bamboo, Trim: Genuine Leather, Embellishment: Brass

**DESCRIPTION:** Classic Nepali Dhaka material accented with genuine leather and embellished with brass coin trim. Interior zip pocket for secure storage of small items. Detachable leather wrist strap. Flap closes with magnetic snap.





## JITENDRA BAG

#560022

MSRP: USD 70

**DIMENSIONS:** 9.5"H x 13"W x 3"D (24cm x 33cm x 8cm)

**MATERIAL:** Body: 100% Cotton Canvas and Genuine Leather; Trim and Lining: 100% Bamboo Dhaka

**DESCRIPTION:** Sturdy cotton canvas and genuine leather construction. Adjustable length strap. Includes interior zip pocket, gear storage flap, and exterior pockets. Large enough to fit all gear. Fits most 11" laptops.





**KALPANA SARI SCARF**

#560019

**MSRP: USD 30**

**DIMENSIONS:** 78.75"L x 27.5"W (200cm x 70cm)

**MATERIAL:** 100% Recycled Silk Sari

**DESCRIPTION:** Rectangular scarf made with up-cycled 100% silk sari material. Saris are the traditional garment worn by women in South Asia. Because they are made from recycled material, every scarf is unique in pattern and color. Scarves are available in three color families: cool, neutral, and warm.



COOL



NEUTRAL



WARM



**MINGMA SCARF**

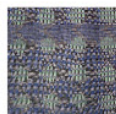
# 560030

**MSRP: USD 30**

**DIMENSIONS:** 39" x 39" (99cm x 99cm)

**MATERIAL:** 100% Woven Bamboo

**DESCRIPTION:** Square scarf with frayed edges made from locally-sourced, naturally insulating, wicking, and anti-microbial bamboo Dhaka.



**MERA SCARF**

#560034

**MSRP: USD 260**

**DIMENSIONS:** 30"W x 80"L (76cm x 203cm)

**MATERIAL:** 100% Cashmere, 8 gauge

**DESCRIPTION:** This versatile and luxurious scarf, made from pure cashmere offers warmth and style while worn layered around your neck or draped elegantly as shown.



STEEL GREY



JET BLACK



CLASSIC BLUE



GLACIER GREEN



ICE PINK



MERRY RED



TERRACOTTA



CAMEL



### LAXMI GAUZE INFINITY SCARF

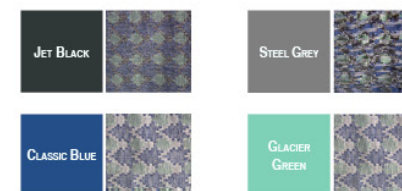
#560006\_G

**MSRP:** USD 45

**DIMENSIONS:** Circumference 91", Width 13" (circumference 231cm, width 33cm)

**MATERIALS:** Body: 50% Organic Cotton/50% Lyocell, Braids: 100% Woven Bamboo

**DESCRIPTION:** Infinity scarf made from ecologically sustainable and ultra soft bamboo/organic cotton jersey with braids made from bamboo Dhaka. Intended to wrap three times when worn.



### LAXMI BAMBOO INFINITY SCARF

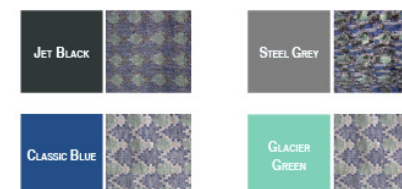
#560006

**MSRP:** USD 45

**DIMENSIONS:** Circumference 91", Width 13" (circumference 231cm, width 33cm)

**MATERIALS:** Body: 70% Bamboo/30% Organic Cotton Jersey; Braids: 100% Woven Bamboo

**DESCRIPTION:** Infinity scarf made from ecologically sustainable and ultra soft bamboo/organic cotton jersey with braids made from bamboo Dhaka. Intended to wrap three times when worn.







ORDER BY: 1 MAR 2015

SHIPS BY: 15 JULY 2015



#### MANAB CAP

#560011

MSRP: USD 20

DIMENSIONS: One size

MATERIAL: 96% Cotton, 4% Elastine

DESCRIPTION: This slightly stretchy cap fits comfortably and breathes easily. It is reversible and printed with a social justice quote on the inside and accented with a woven Purnaa label on the outside.



*"The only thing necessary for the triumph of evil is for good men to do nothing."*

*-Edmund Burke*



*"Justice will not be served until those who are unaffected are as outraged as those who are."*

*-Benjamin Franklin*





#### PURNAA CUSTOM ORDERS

Purnaa's t-shirts, sweatshirts, and caps can be customized with your print. We can use the same patterns featured in this catalog, but tailor the item to your needs. Purnaa is also a contract manufacturer. We can make custom designs based on customer specifications. Purnaa offers manufacturing services to include: pattern making, sampling, fabric sourcing, cutting, sewing, printing, and shipping. Custom orders require a minimum order quantity of 100 items per style. If you are interested in a custom order, please contact us at [sales@purnaa.com](mailto:sales@purnaa.com).









ORDER BY: 1 MAR 2015

SHIPS BY: 15 JULY 2015



FRONT



BACK

AVAILABLE IN GREY



### ANNAPURNA PILLOW

#670033

MSRP: USD 50

**DIMENSIONS:** 12"L x 24"W (30.5cm x 60 cm)

**MATERIAL:** Wool with water buffalo horn buttons

**DESCRIPTION:** Featuring the actual silhouette of the famous Nepali Annapurna Mountain range in the Himalayas, this pillow cover is hand-knit and hand-felted for unique texture.



### SAGARMATHA PILLOW

#670031

MSRP: USD 45

**DIMENSIONS:** 20"L x 20"W (50cm x 50cm)

**DESCRIPTION:** Purnaa's largest pillow cover is hand-knit and hand-felted and boasts the Nepali name for Mt. Everest

SAGARMATHA & LANGTANG PILLOWS AVAILABLE IN  
CREME, CHARCOAL, AND GREY



### LANGTANG PILLOW

#670032

MSRP: USD 35

**DIMENSIONS:** 16"L x 16"W (40cm x 40cm)

**DESCRIPTION:** Cable-knit patterned front and back with horn button flap closure in front

SALES@PURNA.COM





### Order Information:

Thank you for checking out Purnaa's Fall 2015 Product Line. To place a wholesale order, please contact us at [lo.swink@purnaa.com](mailto:lo.swink@purnaa.com). For more info about our manufacturing capabilities (we are also a contract manufacturer), contact us at: [info@purnaa.com](mailto:info@purnaa.com)

Order By: 1 March 2015

Ships By: 15 July 2015

### Buy Back Guarantee:

We value quality products and customer satisfaction. As such, we offer a guarantee to buy-back any items that are defective.

### Contact:

**Sales inquiries:** [lo.swink@purnaa.com](mailto:lo.swink@purnaa.com)

**General inquiries:** [info@purnaa.com](mailto:info@purnaa.com) or +977-9818502657

**Web:** [www.purnaa.com](http://www.purnaa.com)

**Social:** [facebook.com/PurnaaEnterprises](https://facebook.com/PurnaaEnterprises), [twitter.com/purnaanepal](https://twitter.com/purnaanepal), [pinterest.com/purnaapin](https://pinterest.com/purnaapin), [instagram.com/purnaanepal](https://instagram.com/purnaanepal)

PURNAA Women's Size Chart

	SMALL	MEDIUM	LARGE	X-LARGE
BUST	34-36" (86-91.5 cm)	37-39" (94-99 cm)	40-42" (101.5-106.5 cm)	43-45" (109-114 cm)
WAIST	27-28.5" (68.5-72 cm)	29-30.5" (73.5-77.5 cm)	31-34.5" (79-87.5 cm)	35-39.5" (89-100 cm)
HIPS	37-39" (94-99 cm)	40-42" (101.5-106.5 cm)	42-44" (106.5-112 cm)	45-47" (114-119 cm)

PURNAA Men's Size Chart

	SMALL	MEDIUM	LARGE	X-LARGE
CHEST	34-36" (86-91.5 cm)	38-40" (96.5-101.5 cm)	42-44" (106.5-112 cm)	46-48" (117-122 cm)
WAIST	29-31" (73.5-79 cm)	32-34" (81-86 cm)	35-37" (89-94 cm)	38-40" (96.5-101.5 cm)

### Our Thanks!

Many people gave their time and talents to make our first catalog a reality. Heartfelt "thank yous" go out to:

#### Photographers:

Kristen Randolph: [kristenloveslentils.smugmug.com](http://kristenloveslentils.smugmug.com)

Mikael Frisk: [mfrisk.se](http://mfrisk.se)

Graphic Designer: Candice Davis: [hyleigh.com](http://hyleigh.com)

Models: Hanna, Sarah S., Bronwyn, Katy, John, Christel, Sarah N., Stephen, Sita, Anita, Eli, Calvin, Marte, Johnson, Bikash, Meghann

JEWELRY by BeautyForAshes, a social business in Nepal  
[beautyforashesintl.com](http://beautyforashesintl.com)





 PURNAA

[WWW.PURNAA.COM](http://WWW.PURNAA.COM)