

dayton development coalition  
GROWING THE DAYTON REGION



# 2013 Aerial Surveillance Project



## Persistent Surveillance Systems

DAYTON  
— POLICE DEPARTMENT —



# Dayton Innovation & Development



- Tech Town is designed to support the application, commercialization, and convergence of cutting-edge technologies
- Creation of a national sensor test bed for surveillance: **Trusted Situational Awareness**



# Trusted Situational Awareness

## Why is it important?

- Top 7 DOD Priority
- Can be utilized to prevent and minimize acts of terrorism, crime and murder
- Improve operational effectiveness
- Global Demand



# Supporting Law Enforcement

- Technological advancements help police departments maintain its public safety mission with reduced resources

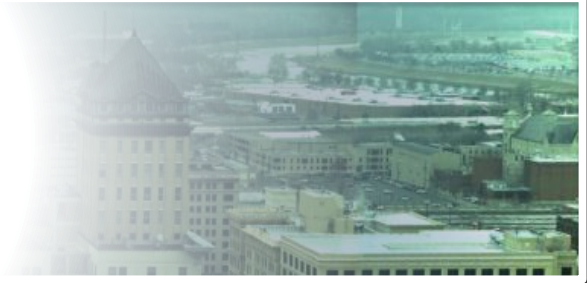
**Enhances identification and interruption of illegal activity while providing valuable forensic intelligence**





-Area Image

DAYTON  
—POLICE DEPARTMENT—



Dayton Police Department

# PILOT FLIGHT DURING SUMMER 2012



# DPD Pilot Project: Summer 2012

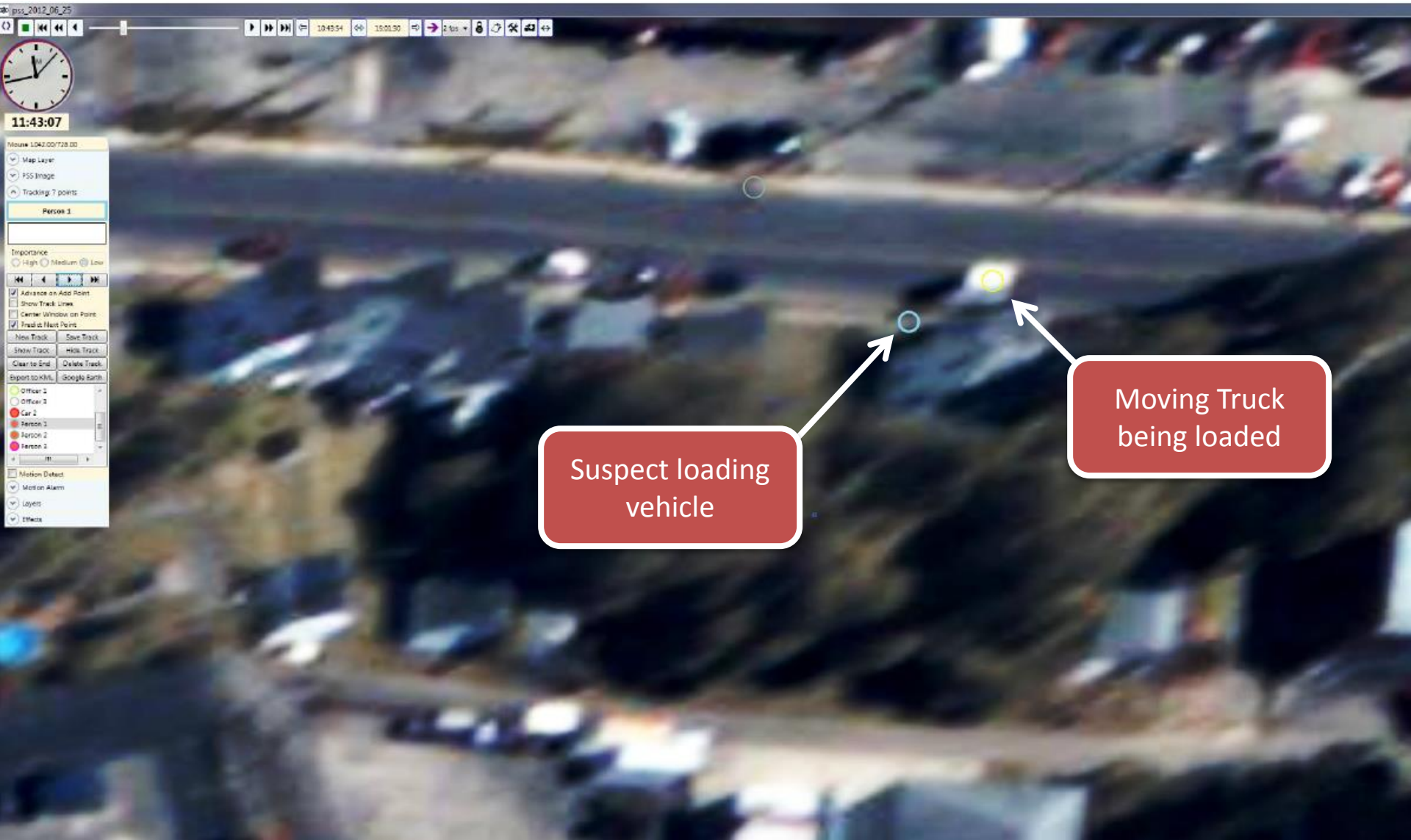
- Pilot operation was conducted from Jun. 21 – Jun. 29
- PSS flights occurred during daylight hours and were centered over Sinclair Community College
  - Imagery transmitted to a fixed location at Sinclair
- DPD selected 18 incidents for aerial surveillance
  - A detailed report of two incidents was completed during post-operational analysis
    - Burglary In-Progress at 530 Leo St.
    - Robbery Spree involving multiple commercial locations



# DPD Pilot Project: Summer 2012

- Report of Burglary In-Progress at 530 Leo St.
  - Suspect tracked from the burglary location to another location a few miles away. Officers were directed to that location and confirmed the vehicle and the suspect.
- This event was solved in real-time
- The following is actual imagery from the event

Activity is observed that looks like goods being loaded in back of truck at 11:43:07





Officer returns to scene, retrieves witness, goes to suspect's location where witness positively IDs vehicle & suspect



# DPD Pilot Project: Summer 2012

- Robbery Spree involving three commercial locations on the same day (Book Store, Subway, and Family Dollar)
- Analysts were able to track the primary suspect to all of these locations as well as to a Clark gas station prior to the robberies.
- The following is actual imagery from the event



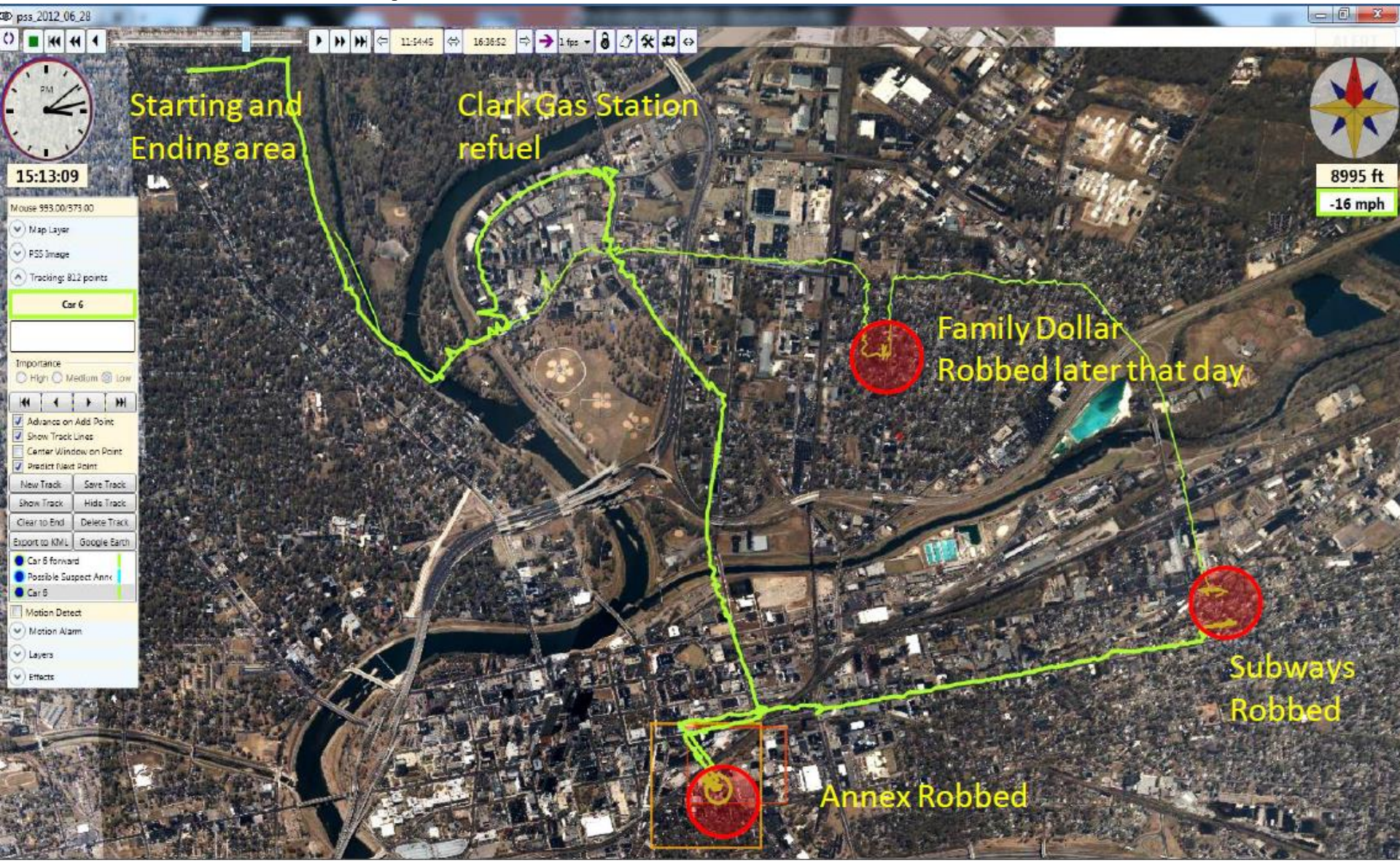


# Suspect observed running from Subway after attempted robbery





# Suspect tracked to all robbery locations and possible area of residence





# DPD Pilot Project: Summer 2012

- Lessons learned during test operation:
  - Operational priorities must be decided in advance
  - Imagery analysts will require some training by system users
  - Flight times should correspond with identified crime patterns or public safety vulnerabilities
- Opportunities for crime reduction / public safety:
  - System is ideal for obtaining investigative information on crime sprees
  - Increase solvability of crimes if occur during operational flight hours
  - Excellent support of live operations involving large disturbances, SWAT operations, or warrant service







Dayton Police Department  
EPOD North  
(937) 333-2387  
Joesph.Grieshop@daytonohio.gov

Bulletin #: 121213-0001  
Release Date: 121213  
Updated on:  
Approved By: Sgt. M. J. Evans

## PATTERN ALERT

### Burglary & B&E Sector 506, 508



#### Focus Hours

Start		Stop
1200	-	2300

#### Focus Dates

Start		Stop
11/17	-	12/5

Pattern : Since 11/17/12, there have been (8) Burglaries and (1) B&E, most occurring along Deeds Ave and Maryland Ave.

1. Keep an eye out for suspects
2. If a suspect is located, contact EPOD detectives
3. FIC's are always appreciated as they give us an idea who hangs out in the area and at what times.

Crime	Date	Time	Address	Incident#
RESIDENTIAL BURGLARY	12/5/2012	1530	430 DEEDS AV	1212050210
RESIDENTIAL BURGLARY	11/29/2012	1900	726 TROY ST	1211300243
RESIDENTIAL BURGLARY	11/25/2012	1600	306 DEEDS AV	1211260043
RESIDENTIAL BURGLARY	11/24/2012	2300	255 ALTON AV	1211250039
RESIDENTIAL BURGLARY	11/22/2012	1230	126 DEEDS AV	1211220272
RESIDENTIAL BURGLARY	11/20/2012	2133	246 ALTON AV	1211200343
RESIDENTIAL BURGLARY	11/20/2012	1400	216 HART ST	1211200206
RESIDENTIAL BURGLARY	11/17/2012	600	1325 LEONHARD ST	1211170284
B&E	11/23/2012	1600	167 GROVE AV	1211230199

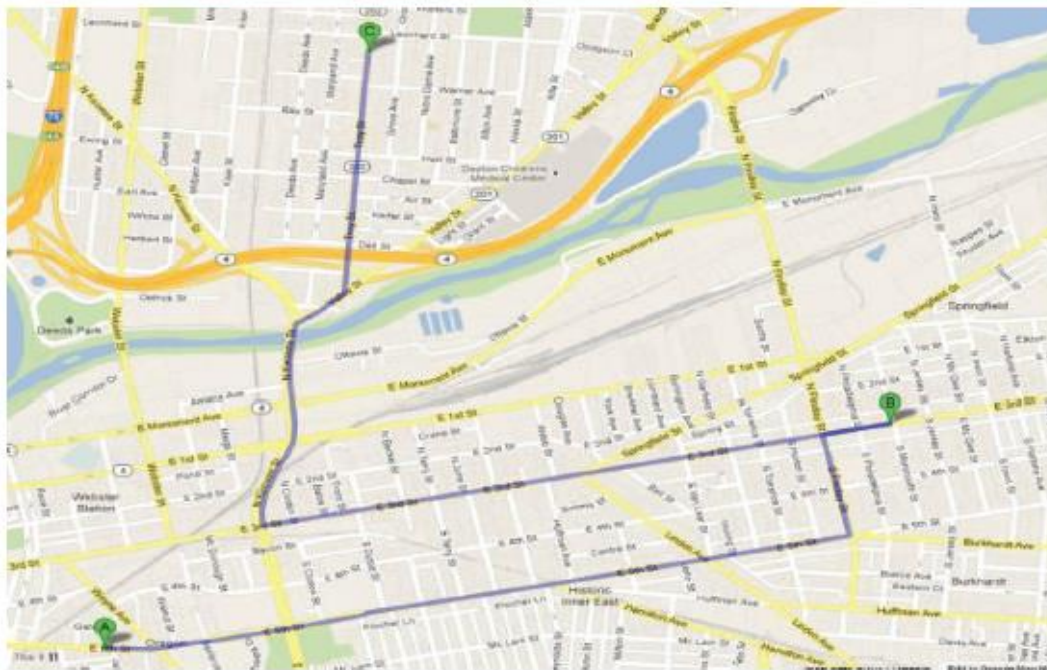


Dayton Police Department  
Central Investigations Division  
(937) 333-1222  
Moe.Perez@daytonohio.gov

Bulletin #:  
Release Date: 6/29/12  
Updated on:

## PATTERN ALERT

### Commercial Armed Robberies of Stores



Serial robber attempted to rob 3 different stores in Dayton. #A: At 1517 hours he went to the Annex Book Store @ 429 E. Fifth St. Told clerk to get away from register, she pressed alarm button he fled out back door. D#1206280216. #B At 1527 same suspect entered SUBWAY @ 2731 E. Third St. displayed a yellow utility knife and demanded cash. The owner pulled his gun out and shot into the ground, suspect fled out the rear door. D#120628-0218. #C: At 1936 hours, same suspect entered the FAMILY DOLLAR @ 745 Troy St. whispered to clerk that he wanted the money he has a gun. Clerk told robber I can't understand what you said told robber I'll get the manager, suspect immediately fled. D#120628-0339.

#### Suspect Information:

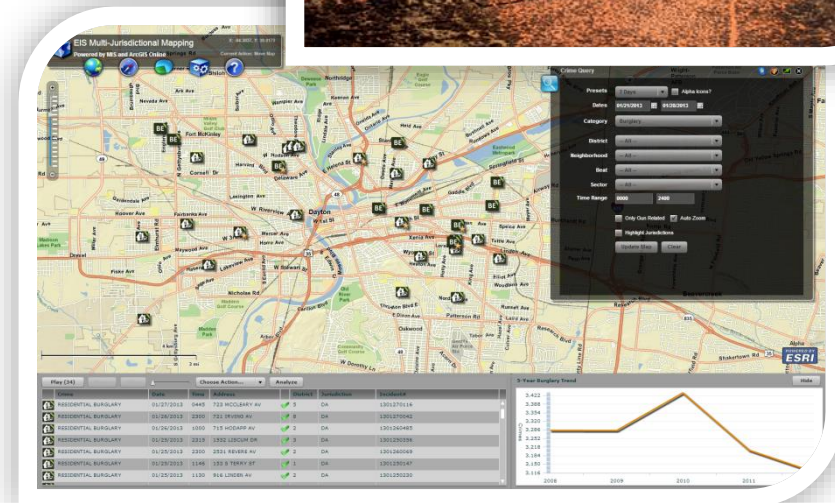
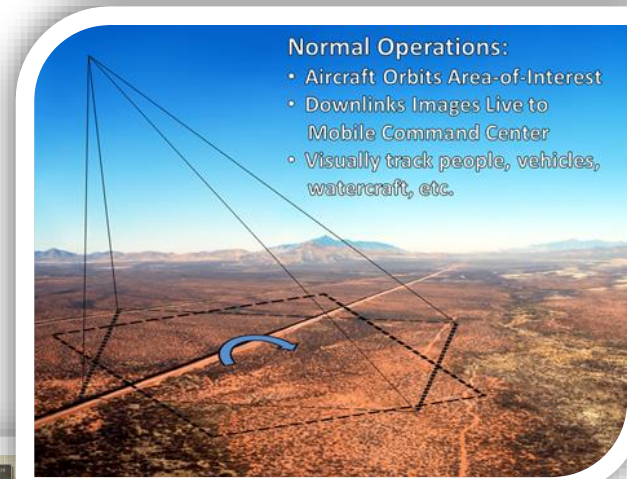


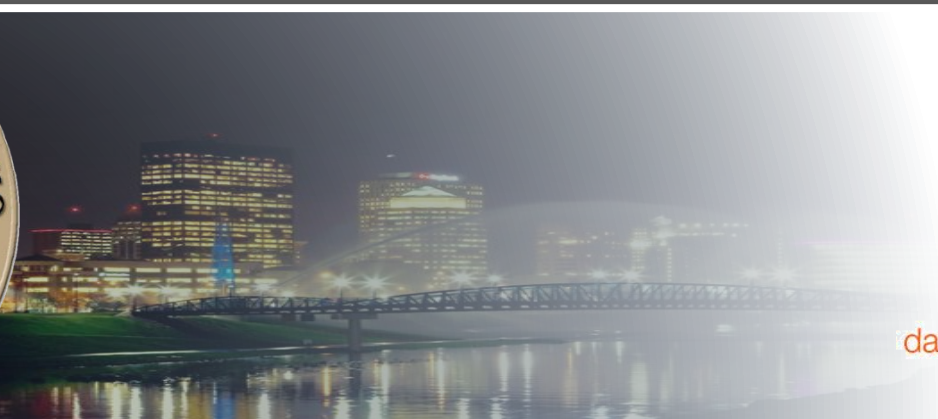
R	S	Age	Height	Wght	Description
W	M	30's	6-0	200	Light skinned
<ul style="list-style-type: none"><li>Green Plain T-Shirt, Writing on Front , Dk. Gray Cammo Shorts, Blk/White Tennis Shoes</li><li>Shoulder Length Sandy Blonde Hair, Mustache</li><li>Displayed an orange box cutter, or implied he had a gun</li></ul>					



# DPD Operation and Integration

- Highly mobile system allows deployment across a large geographical area
- Integration with:
  - Dispatch records (CAD)
  - Arrest Records
  - Warrants
  - Field Interview Contacts
  - Crime mapping & analysis tools
- Enables surveillance to monitor crime patterns as they emerge





dayton development coalition  
GROWING THE DAYTON REGION



# Questions?

DAYTON   
— POLICE DEPARTMENT —