

Vision RL

Persistent Vision System



10:33:05

International Airport

Vision RL Located on top of a Tower
77 Meters Above Ground
South Orientation

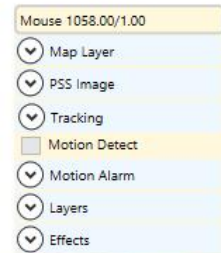
Vision RL Configuration:

Seven 16 Megapixel Cameras
Five 50 mm Lenses - Middle

Two 135 mm Lenses – Far left & Far Right

One 800 mm Spotter Camera

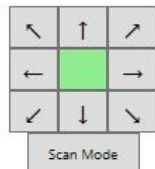
Weather Conditions: Overcast



View Looking South)
Seven Camera Zones



Yellow box within orange box
represents area being viewed



VISION-RL

Persistent Vision System

Base System Anatomy



Spotter Camera - *Option*

- Daylight (EO)
 - Available EO lens lengths from 200 mm to 1600 mm
 - 16 or 29 Megapixel
- NightTime (LWIR) - *Option*
 - Up to 3.1 megapixel
 - Up to 400 mm lens
 - Dedicated or co-bore sighted
- 300 degree operation
- Analyst cueing via iView Image Exploitation Software
- Constant on
- Step Stare when idle - *Option*

Vision RL Base System

- Daylight (EO)
- Constant On
- Seven Cameras
- Available EO lens lengths from 50 mm to 200 mm
- 16 or 29 Megapixel
- Available 190 degree coverage
- 4 km radius, 25sq km coverage area
- ½ meter resolution throughout
- Image Processing Server
- iView Image Exploitation Software

Vision RL Multi-Mount

- Tripod
- Pole
- Building

Vision RL

Persistent Vision System

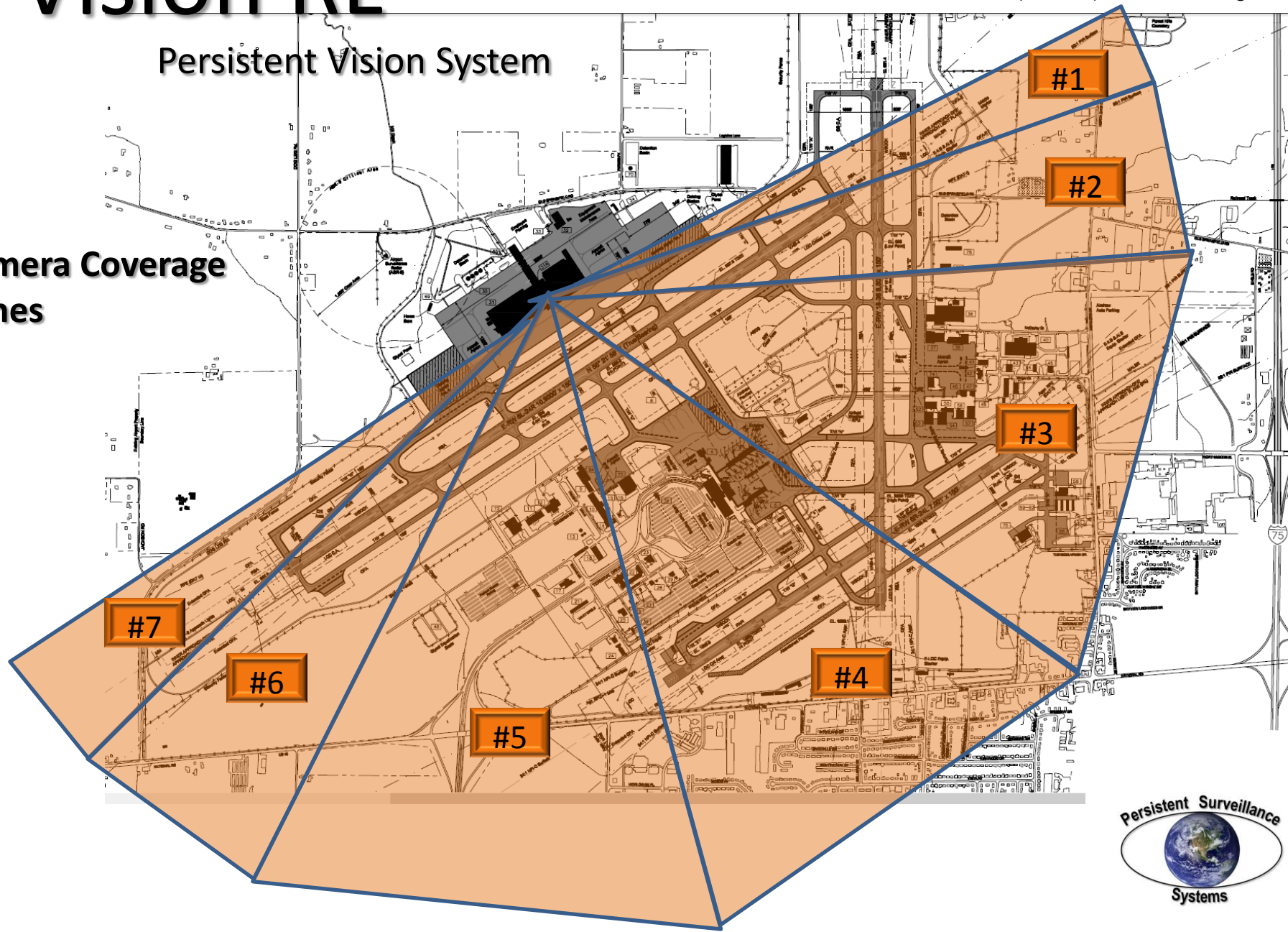
Base System Configuration – EO (Daylight)

2.5 mile (4 km) radius

9.8 sq mile (25 km) coverage area

1.5 foot (.5 meter) resolution throughout

Camera Coverage
Zones



Vision RL

Persistent Vision System



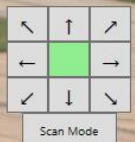
BASE SYSTEM IMAGE



Camera #1
Coverage Area

Camera #1

- 135 mm Lens
- View impeded due to Emory Tower Rail around roof and building surveillance camera.
- Images taken at 18:20 May 24, 2013



Vision RL

Persistent Vision System

SPOTTER CAMERA IMAGE



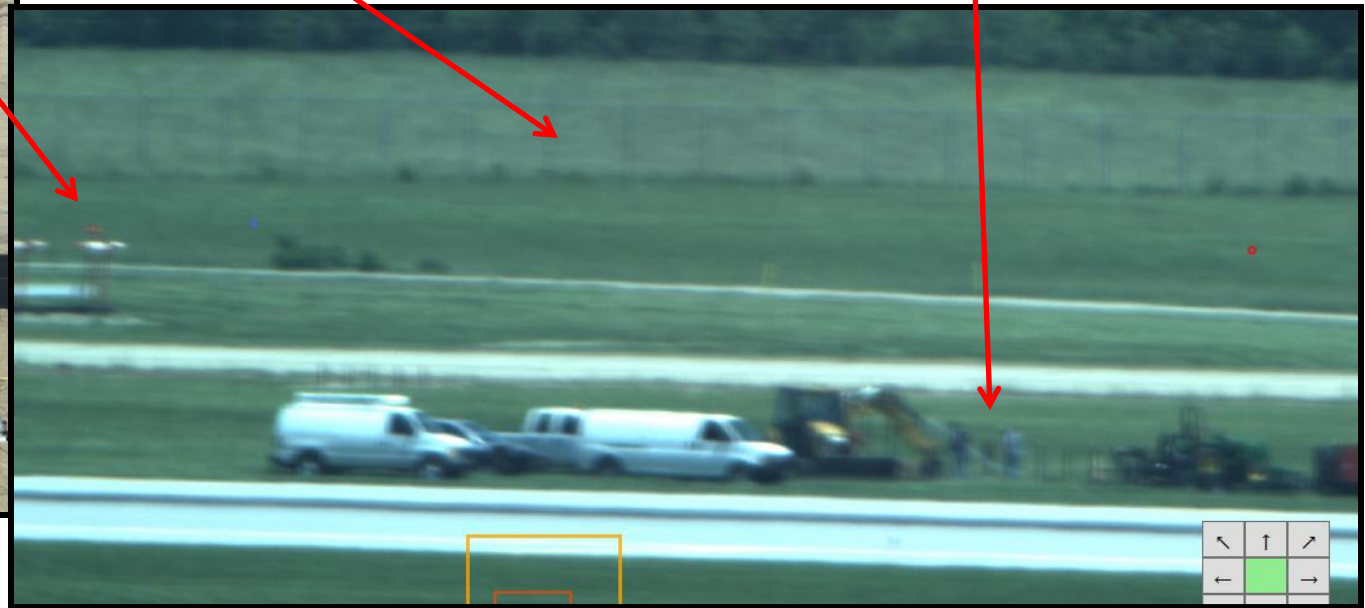
Spotter Camera

- 800 mm Lens
- View impeded due Tower Rail around roof and building surveillance camera.
- Image taken at 13:52 May 29, 2013

Camera #1
Coverage Area

Perimeter Fence

Four men, one carrying conduit

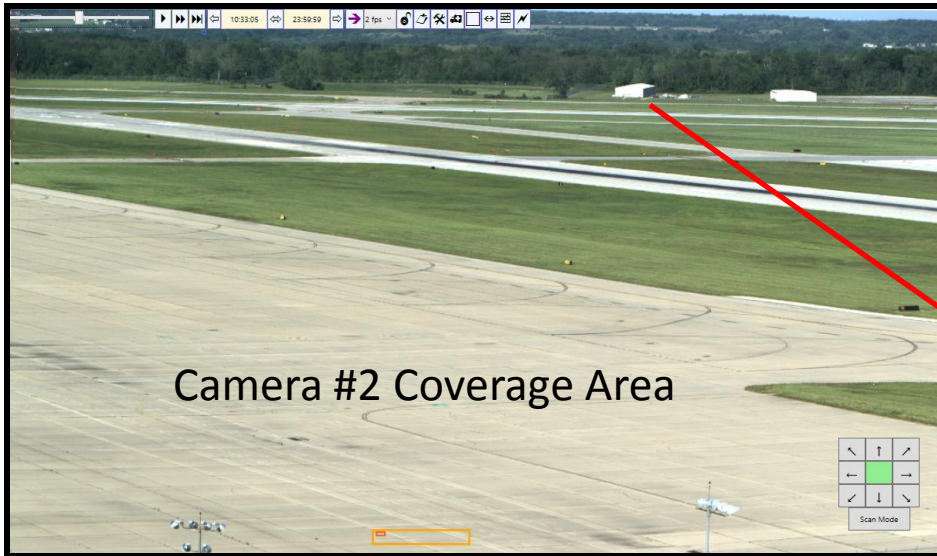


Slight Zoom View of Top of Image

Vision RL

Persistent Vision System

BASE SYSTEM IMAGE



Camera #2

- 50 mm Lens
- Images captured at 18:20 May 24, 2013



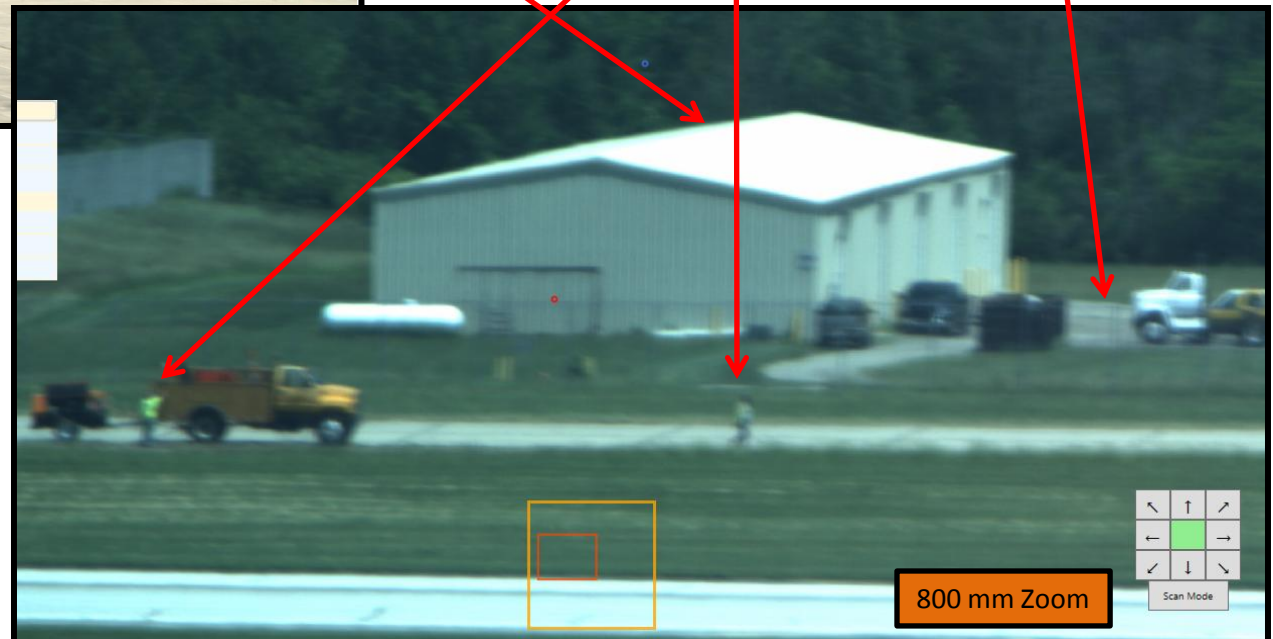
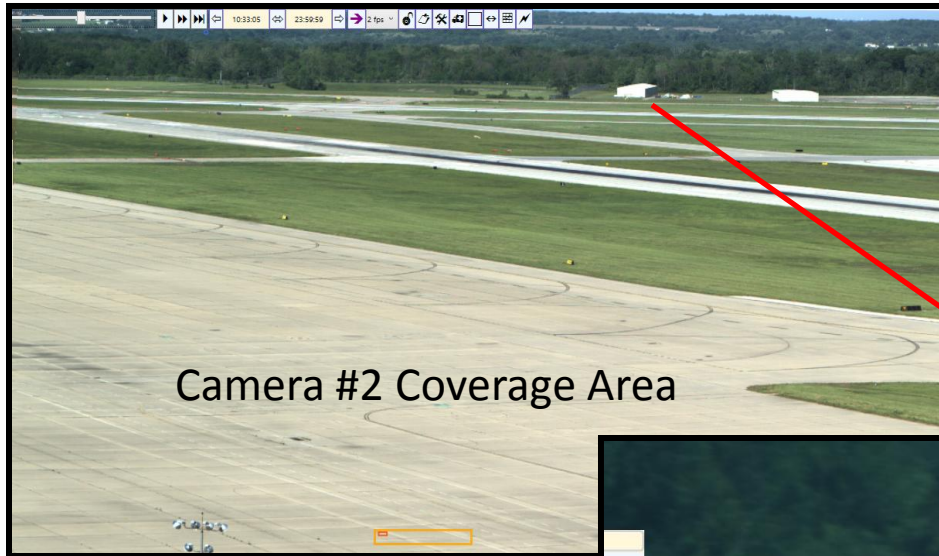
Vision RL

Persistent Vision System

SPOTTER CAMERA IMAGE

Spotter Camera

- 800 mm Lens
- Image taken at 13:52 May 29, 2013



Vision RL

Persistent Vision System

BASE SYSTEM IMAGE



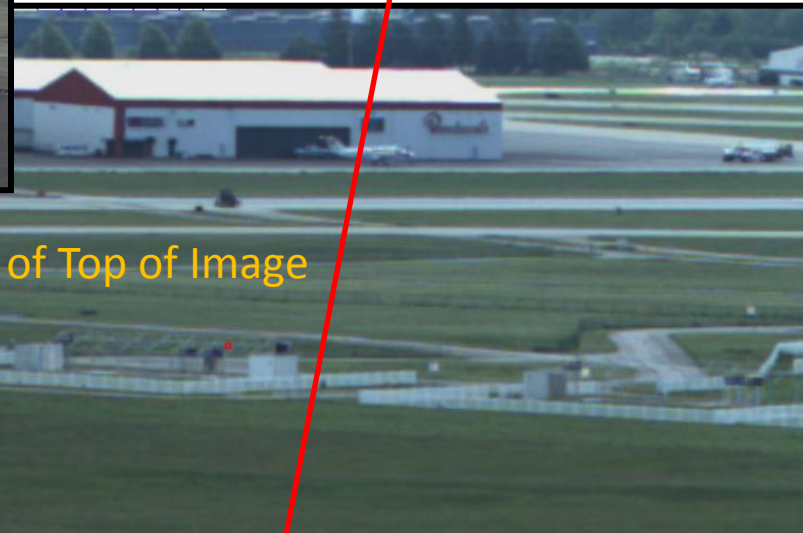
Camera #3 Coverage Area



Zoom of Top of Image

Camera #3

- 50 mm Lens



Slight Zoom View of Top of Image



Additional Zoom of Top of Image



Vision RL

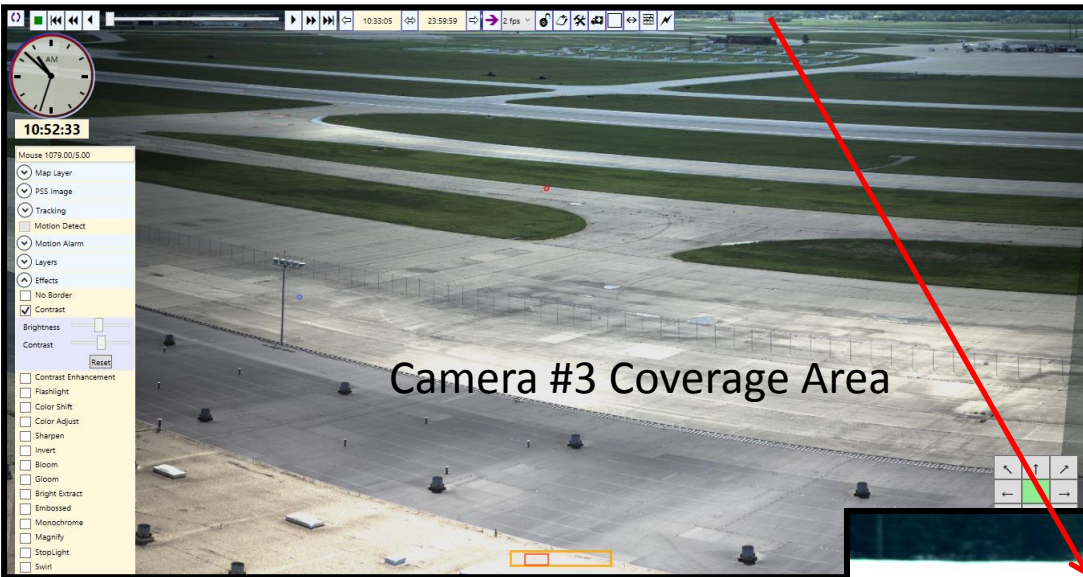
Persistent Vision System

SPOTTER CAMERA IMAGE



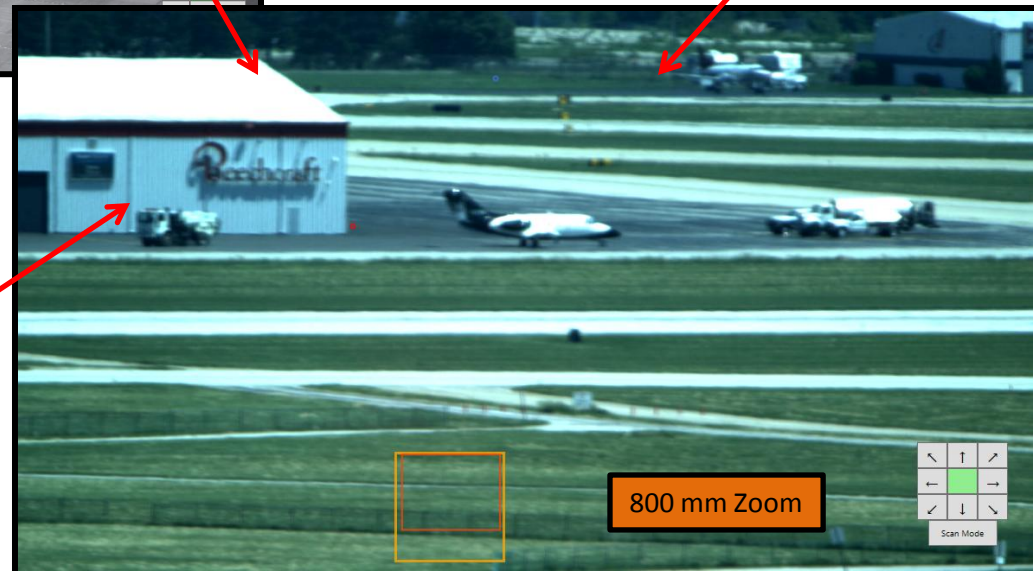
Spotter Camera

- 800 mm Lens
- Image taken at 13:52 May 29, 2013



Camera #3 Coverage Area

Perimeter Fence



800 mm Zoom

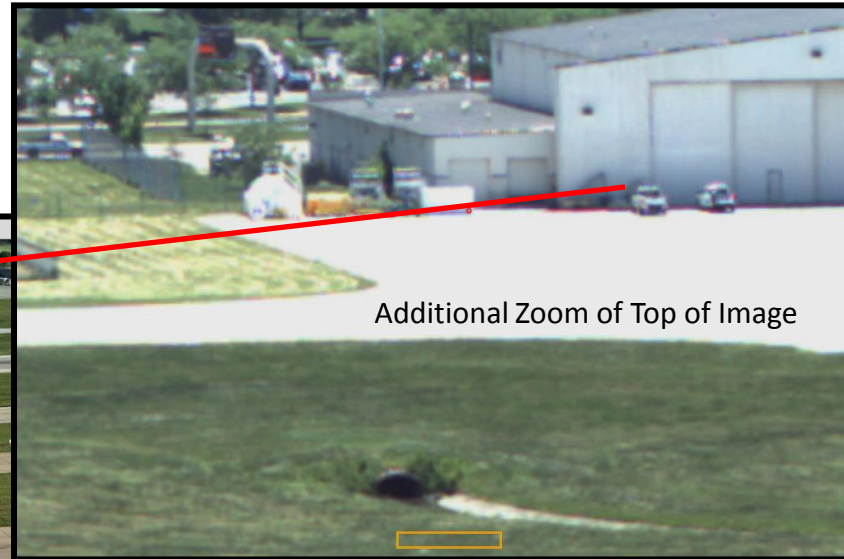
50 mm Digital Zoom

Additional Zoom of Top of Image

Vision RL

Persistent Vision System

BASE SYSTEM IMAGE

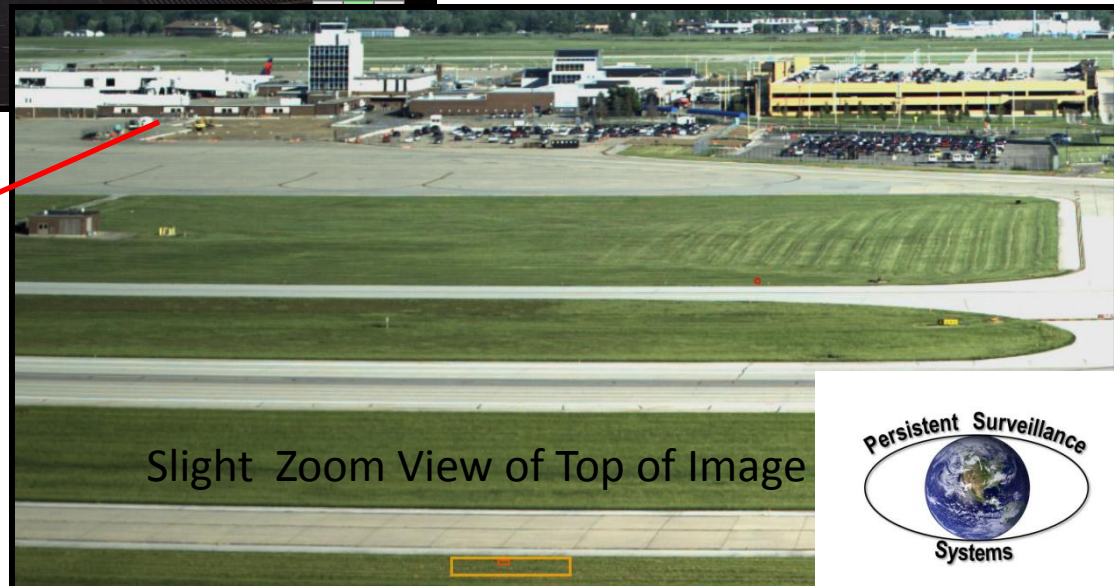


Additional Zoom of Top of Image

Camera #4

- 50 mm Lens
- Images captured 18:57 May 24, 2013

Camera #4 Coverage Area



Slight Zoom View of Top of Image



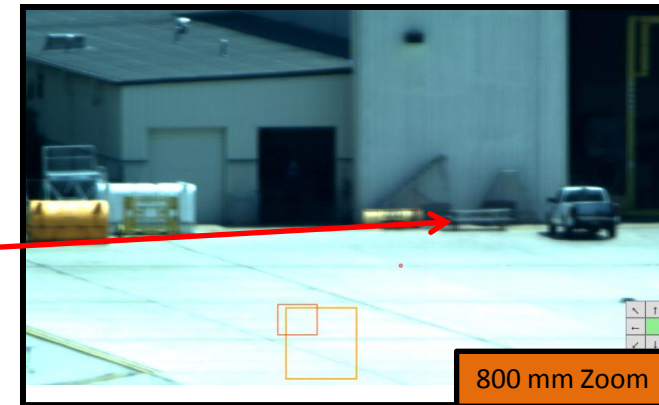
Additional Zoom of Top of Image



Vision RL

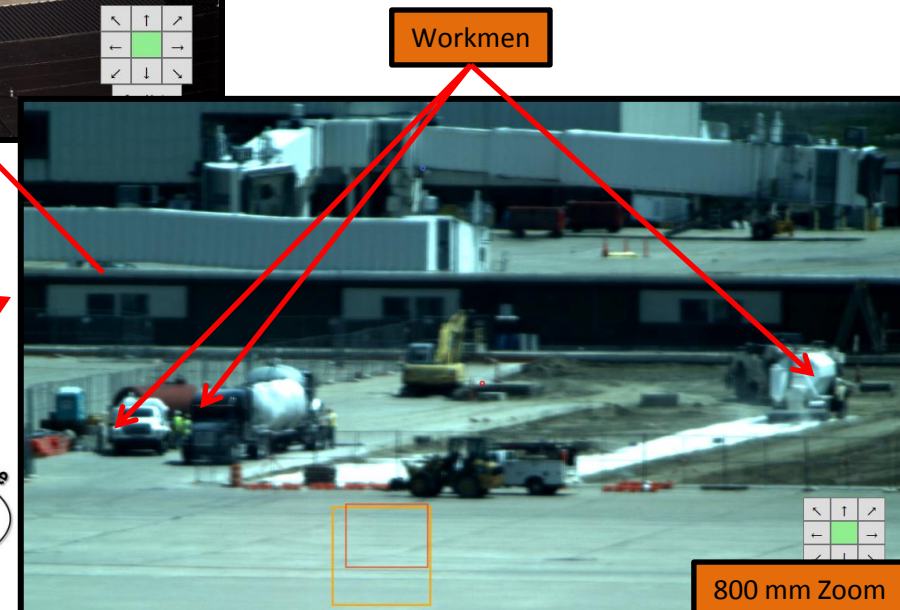
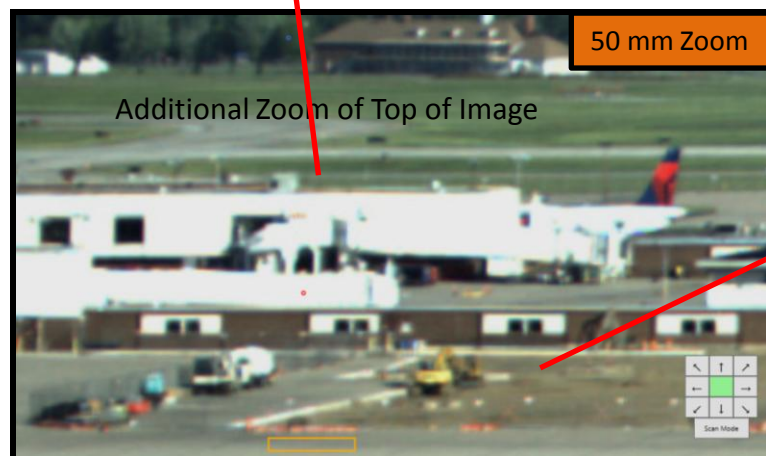
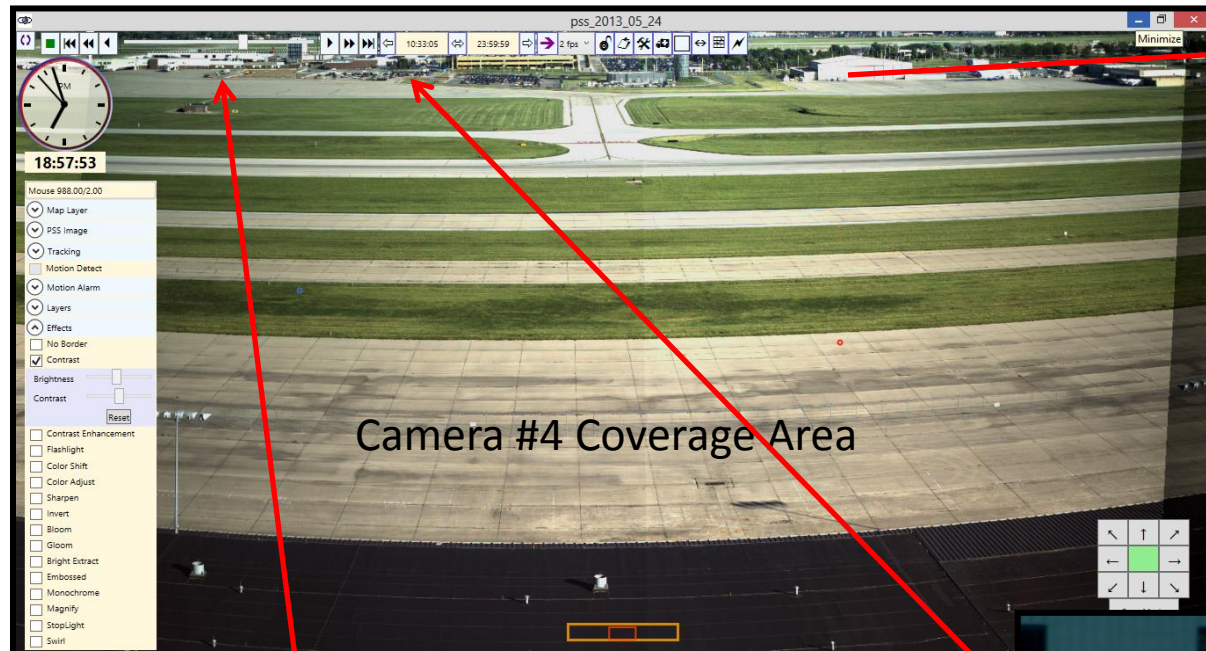
Persistent Vision System

SPOTTER CAMERA IMAGE



Spotter Camera

- 800 mm Lens
- Images taken at 13:52 May 29, 2013



Vision RL

Persistent Vision System

Camera #5 Coverage Area

Additional Zoom of Top of Image

Additional Zoom of Top Right of Image

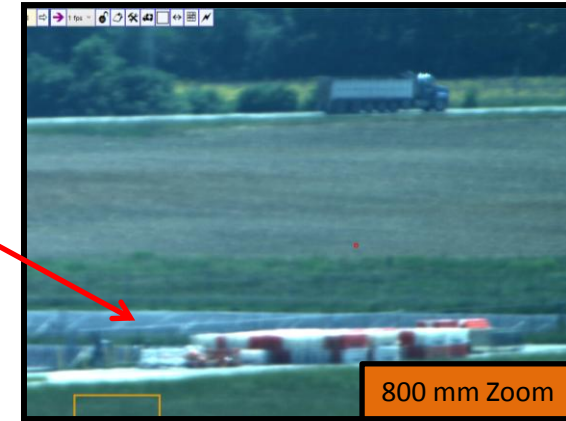
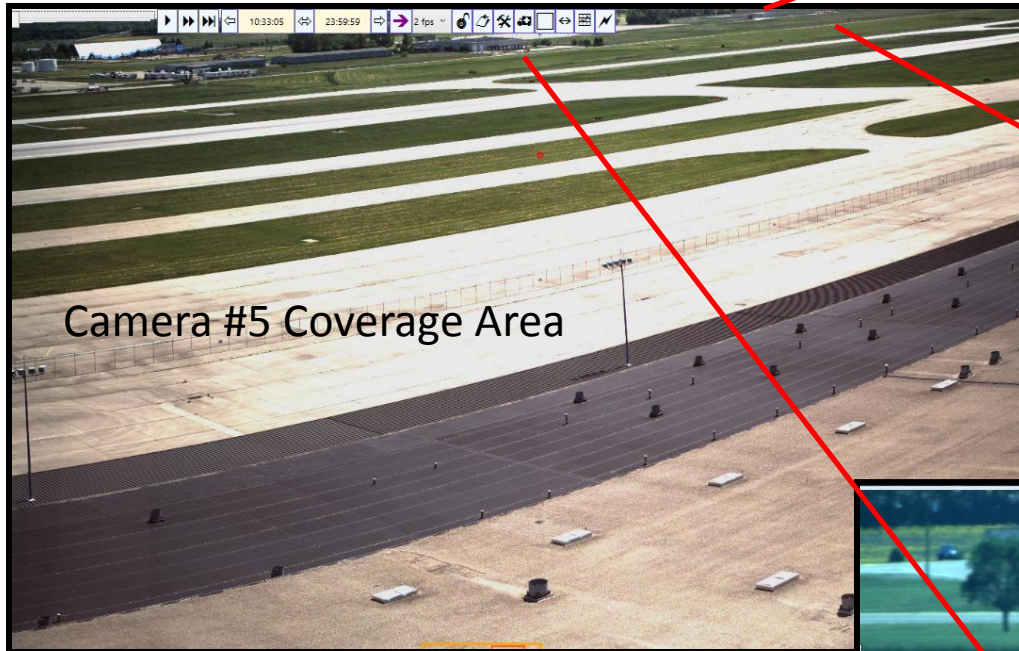
Slight Zoom View of Top of Image

Camera #5

- 50 mm Lens
- Images captured 14:57 May 24, 2013

Vision RL

Persistent Vision System



SPOTTER CAMERA IMAGE

Spotter Camera

- 800 mm Lens
- Images taken at 13:52 May 29, 2013



Vision RL

Persistent Vision System

BASE SYSTEM IMAGE



Camera #6 Coverage Area

Camera #6

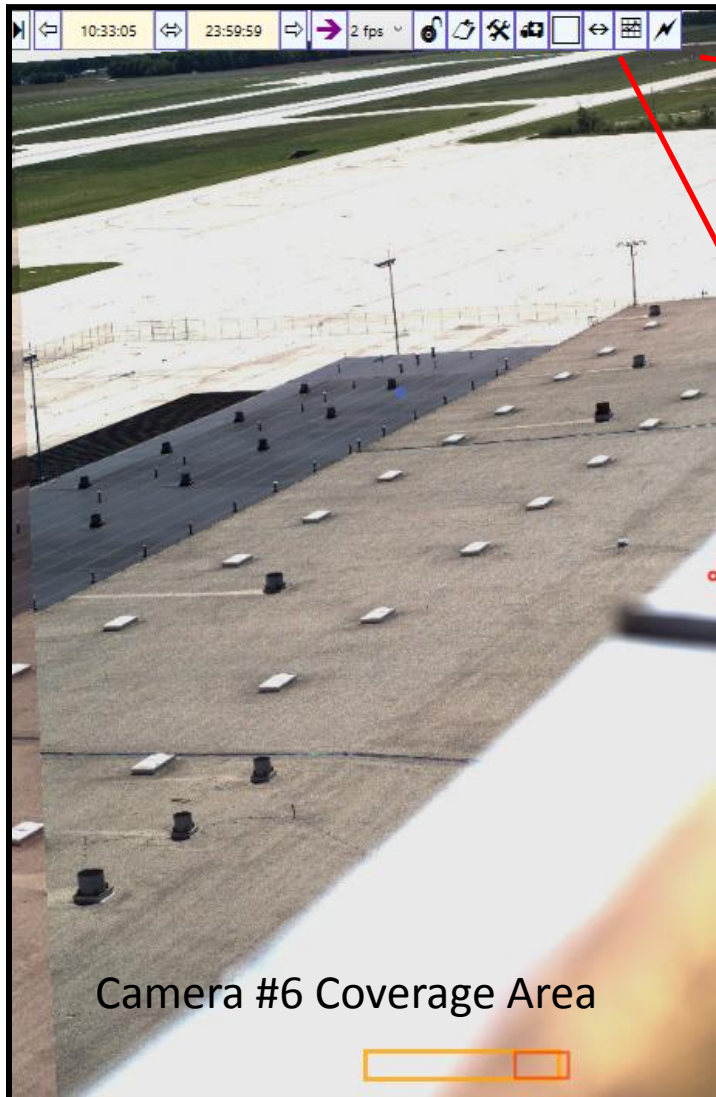
- 50 mm Lens
- Images captured 14:57 May 24, 2013



Vision RL

Persistent Vision System

SPOTTER CAMERA IMAGE



Camera #6 Coverage Area



800 mm Zoom

Spotter Camera

- 800 mm Lens
- View impeded due Tower Rail around roof and building surveillance camera.
- Images taken at 13:52 May 29, 2013



Additional Zoom of Top Right of Image

50 mm Zoom

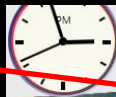
Vision RL

BASE SYSTEM IMAGE



Persistent Vision System

Camera #7
Coverage
Area



14:57:41

Mouse 952.00/30.00

☒ Map Layer

☒ PSS Image

☒ Tracking

☐ Motion Detect

☐ Motion Alarm

☒ Layers

☒ Effects

☐ No Border

☒ Contrast

Brightness

Contrast

☐ Contrast Enhancement

☐ Flat Light

☐ Color Shift

☐ Color Adjust

☐ Sharpen

Slight Zoom View of Top of Image

Camera #7

- 50 mm Lens
- Images captured 14:57 May 24, 2013



Vision RL

SPOTTER CAMERA IMAGE



Persistent Vision System

Perimeter Fence

Camera #7
Coverage
Area



800 mm Zoom

Spotter Camera

- 800 mm Lens
- View impeded due to Tower Rail around roof and building surveillance camera.
- Images taken at 13:52 May 29, 2013

Vision RL

Persistent Vision System

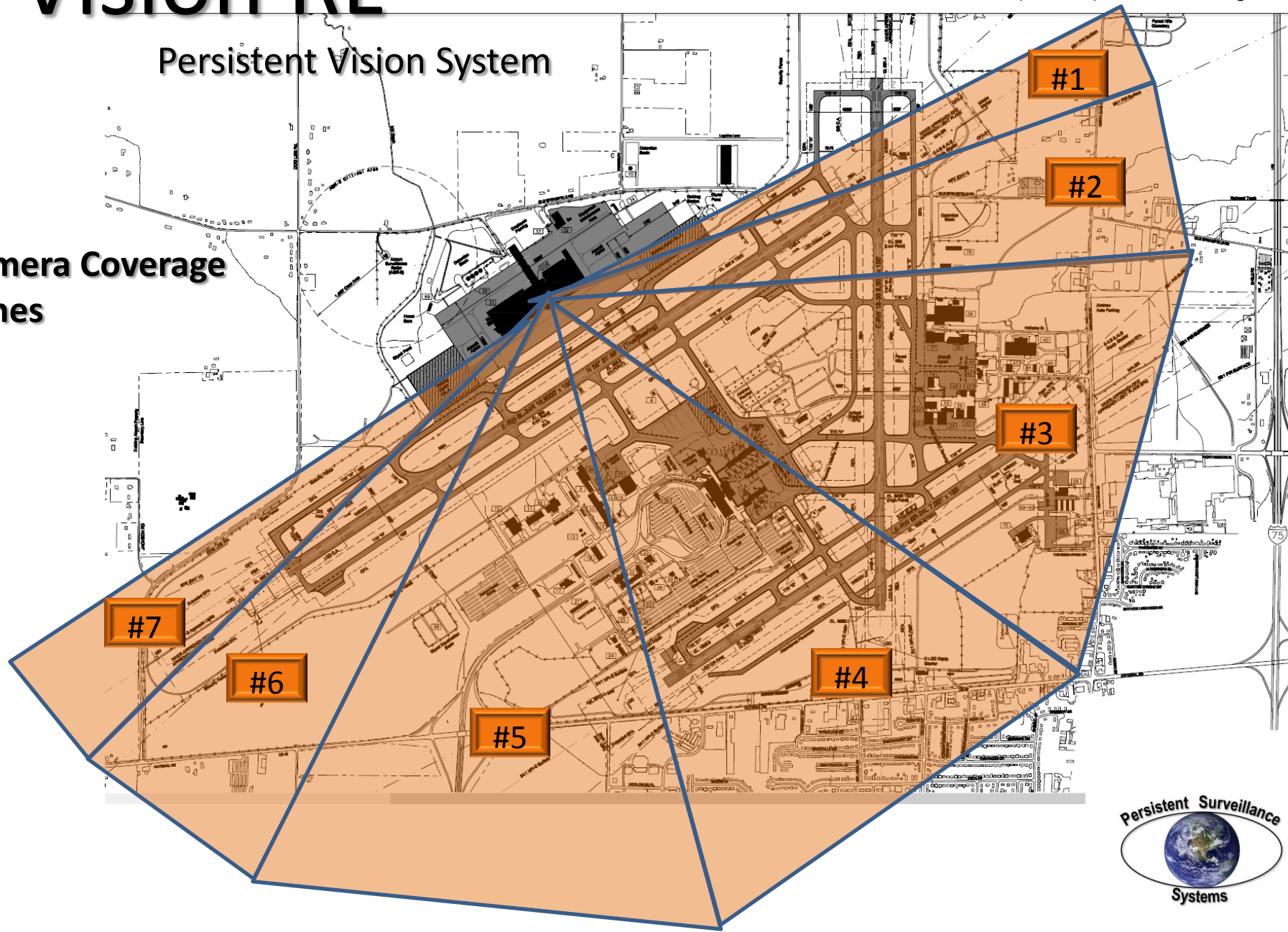
Base System Configuration – EO (Daylight)

2.5 mile (4 km) radius

9.8 sq mile (25 km) coverage area

1.5 foot (.5 meter) resolution throughout

Camera Coverage
Zones



A large, white, boxy surveillance camera is mounted on a black tripod. The camera has a rectangular sensor housing on top and a larger, hexagonal base with multiple viewing ports. It is positioned on a tarmac at sunset, with a fighter jet visible in the background under a warm, orange sky.

VISION-RL

Persistent Vision System

- Airport Security
- Infrastructure Monitoring
- Port Security
- Special Event Coverage
- Border Surveillance
- Theme Park Surveillance