



Wide Area Motion Imagery supporting Law Enforcement



Dayton Ohio Sample Investigations

- Triple Robbery Investigation
- Burglary Investigation
- Drug Investigation Support

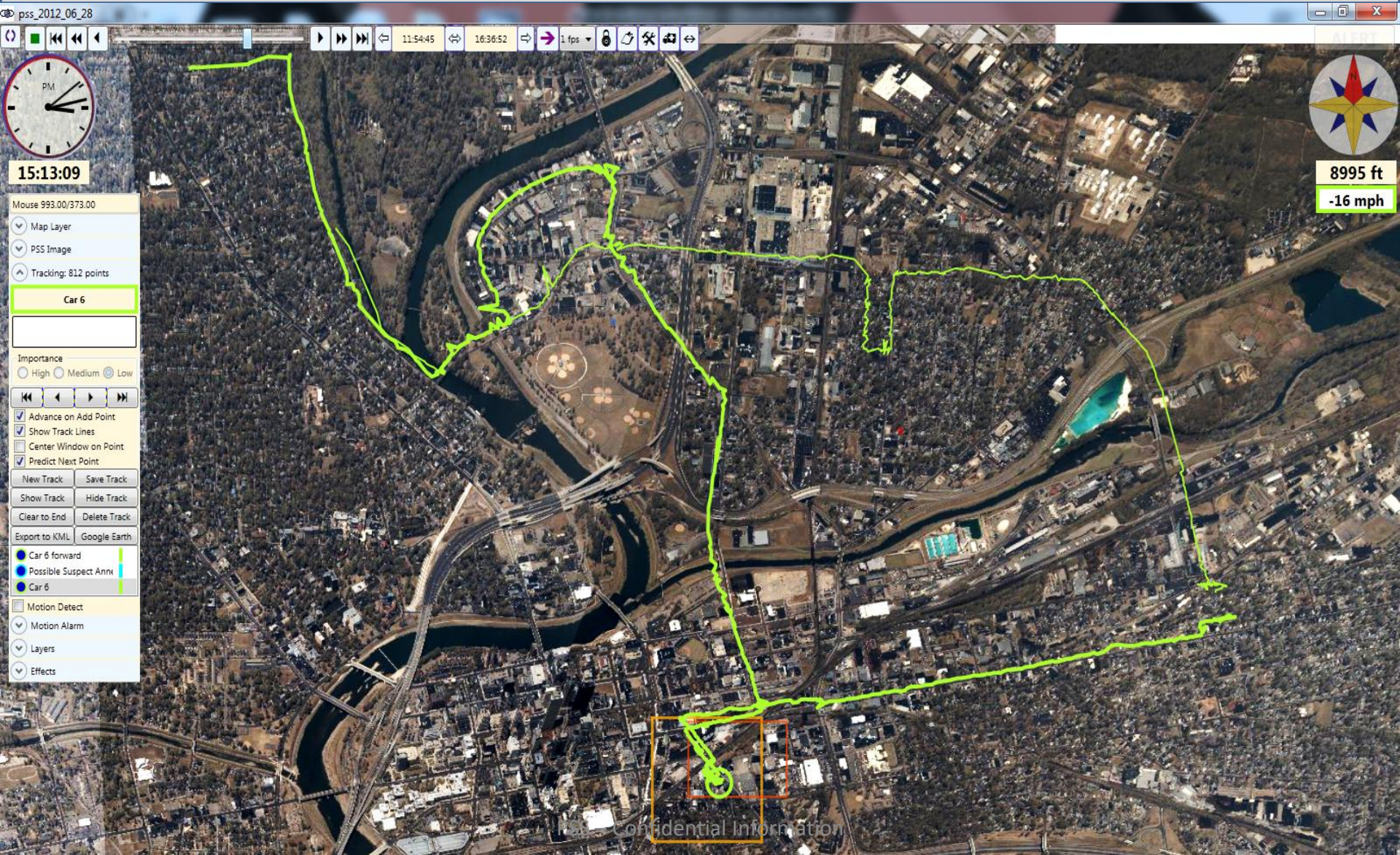
Wide Area Airborne Surveillance

Robbery Spree



Persistent Surveillance Systems

PSS Suspect Track





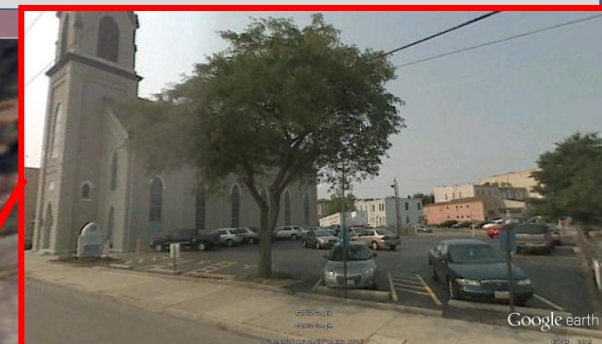
Persistent Surveillance Systems

Attempted Robbery – Annex

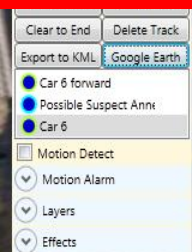


15:15:07 – Suspect arrives at the church parking lot
Wayne Ave.

15:15:19 – Suspect parks and exits the vehicle walking south towards the Annex



Wayne Ave
Church Parking Lot



The Annex ### E. Third St.



Persistent Surveillance Systems

Suspect Leaving Annex





Persistent Surveillance Systems

PSS Imagery – Subway

pss_2012_06_28

11:54:45 16:36:52 1 fps

15:22:30

8997 ft
8 mph

15:22:30 – Suspect drives into the alley behind the Subway
15:22:40 to 15:26:00
Suspect attempts to rob the Subway at ##### E. Third St
15:26:20 – Suspect leaves the alley ways behind Subway heading N on South Philadelphia

Subway ##### E. Third St

PSS – Confidential Information

Google earth



Persistent Surveillance Systems

Suspect Robbery – Family Dollar

pss_2012_06_28



15:30:06



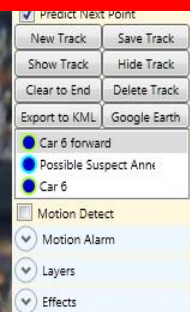
8972 ft

16 mph

15:30:06 – Suspect arrives at Family Dollar but never gets out of the vehicle
15:30:25 – Suspect leaves the family dollar on Troy St and Edmunds



Family Dollar Troy St



PSS – Confidential Information

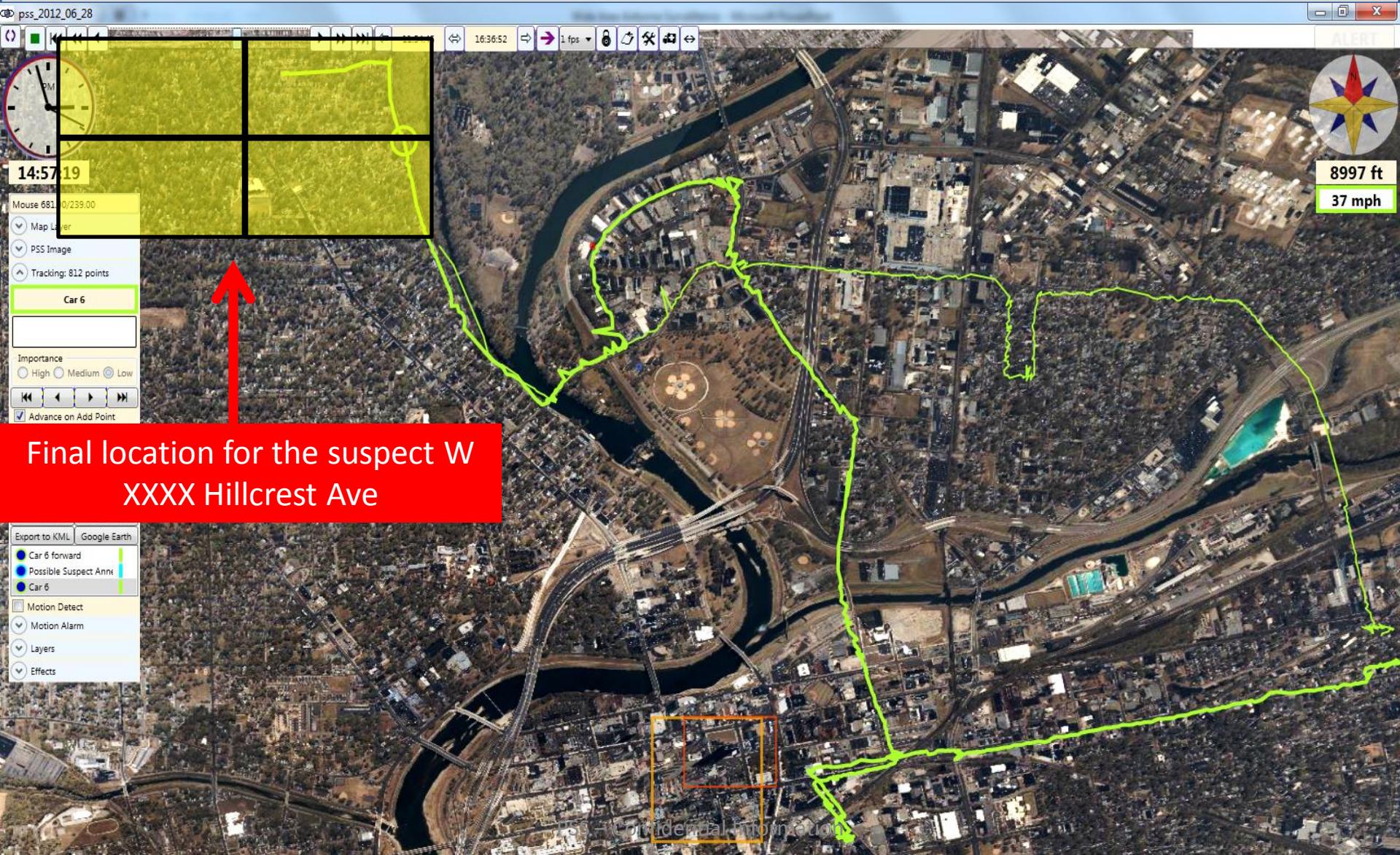


Ohio 202 - Warner Avenue

Google earth



Persistent Surveillance Systems



Burglary

Leo

Reported at

1200 ## June 2012

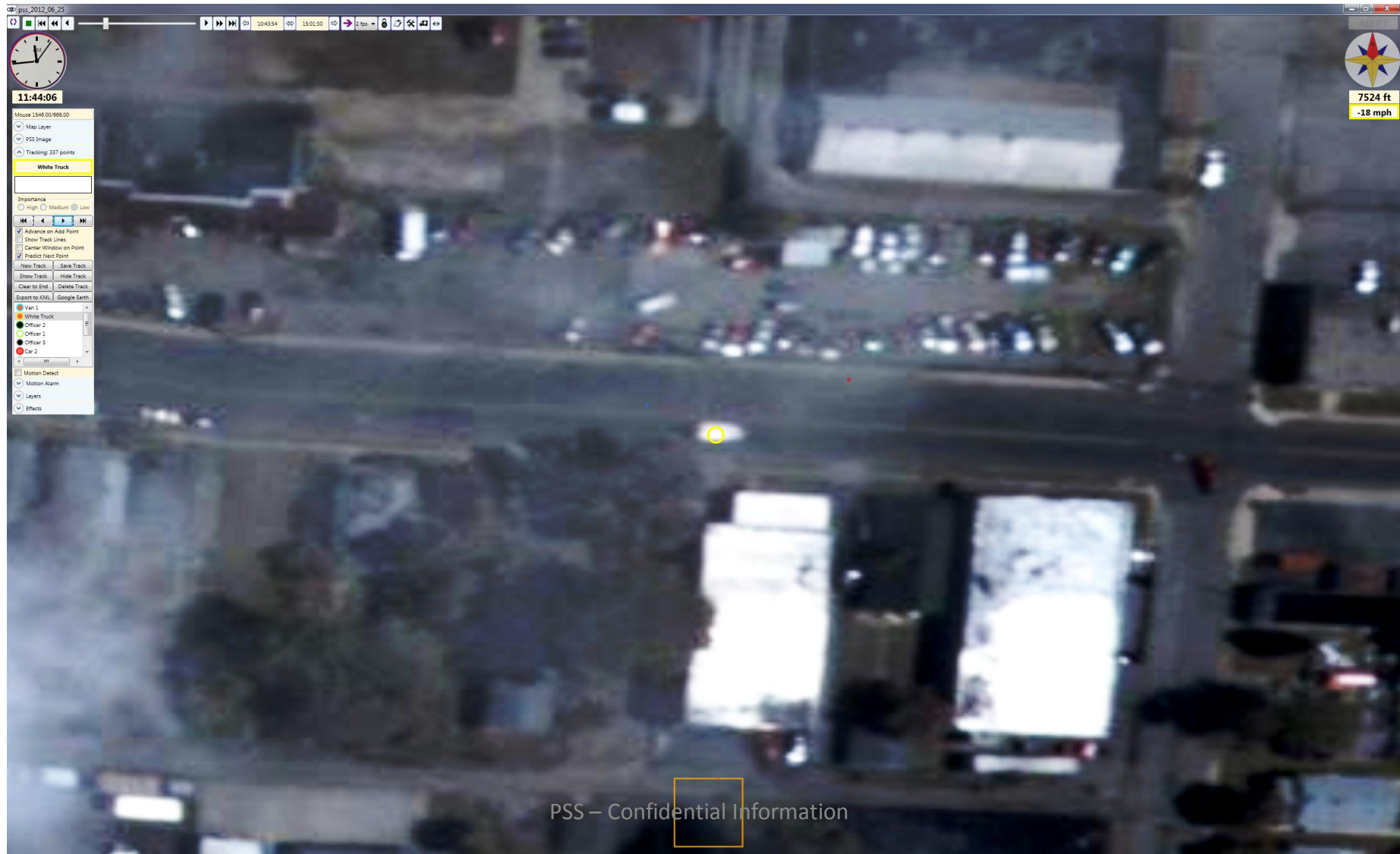
Suspect Track To and From Burglary



Activity is observed that looks like goods being loaded in back of truck at 11:43:07



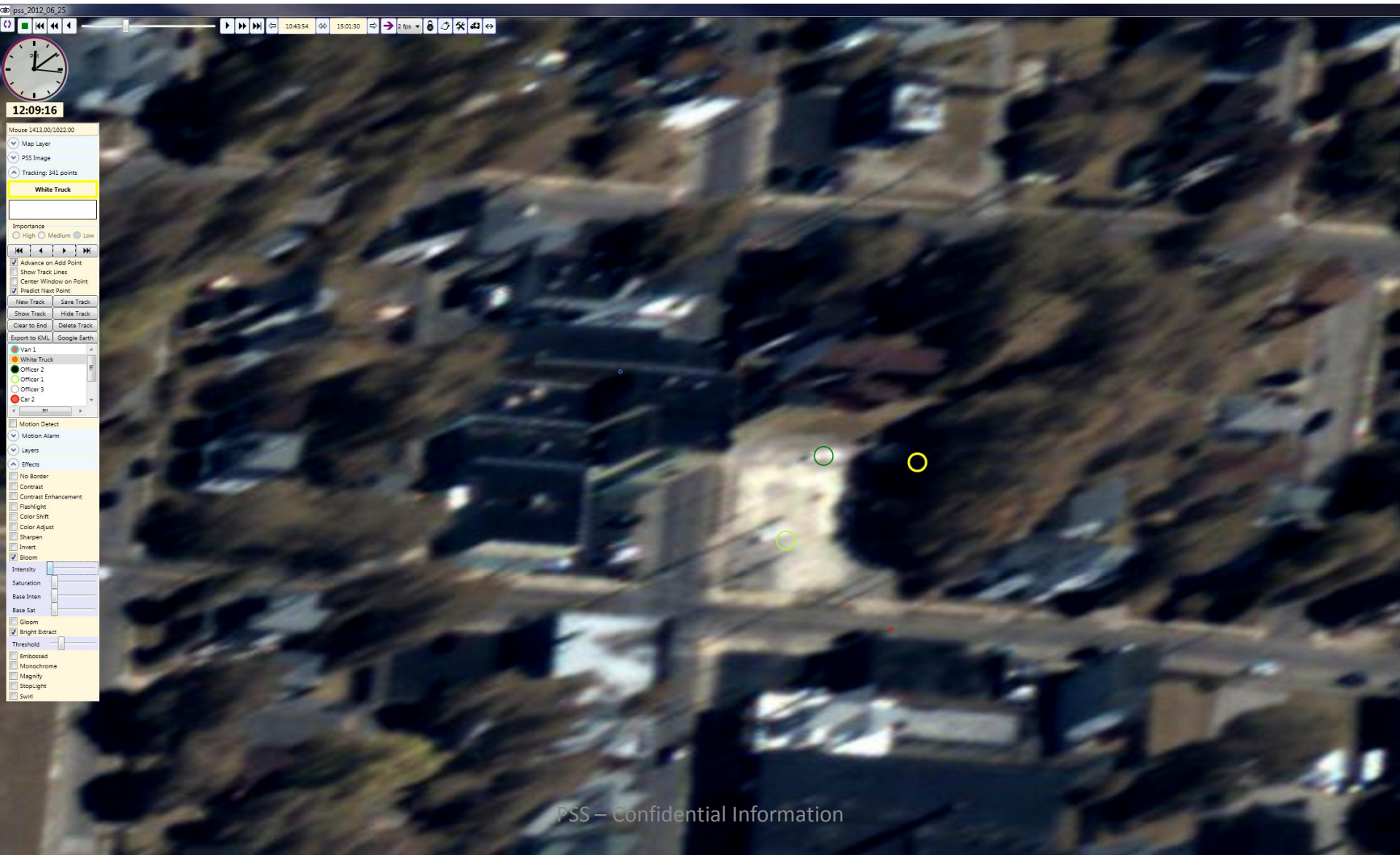
Suspect vehicle departs Burglary location at 11:44:06 – Four minutes and 30 seconds after arriving



Suspect proceeds to Second location using this route – Down Leo to Troy



Officers 1 and 2 arrive at suspects location at 12:09:16



Officer 1 returns to scene and retrieves witness and returns to suspects location and Witness positively IDs vehicle



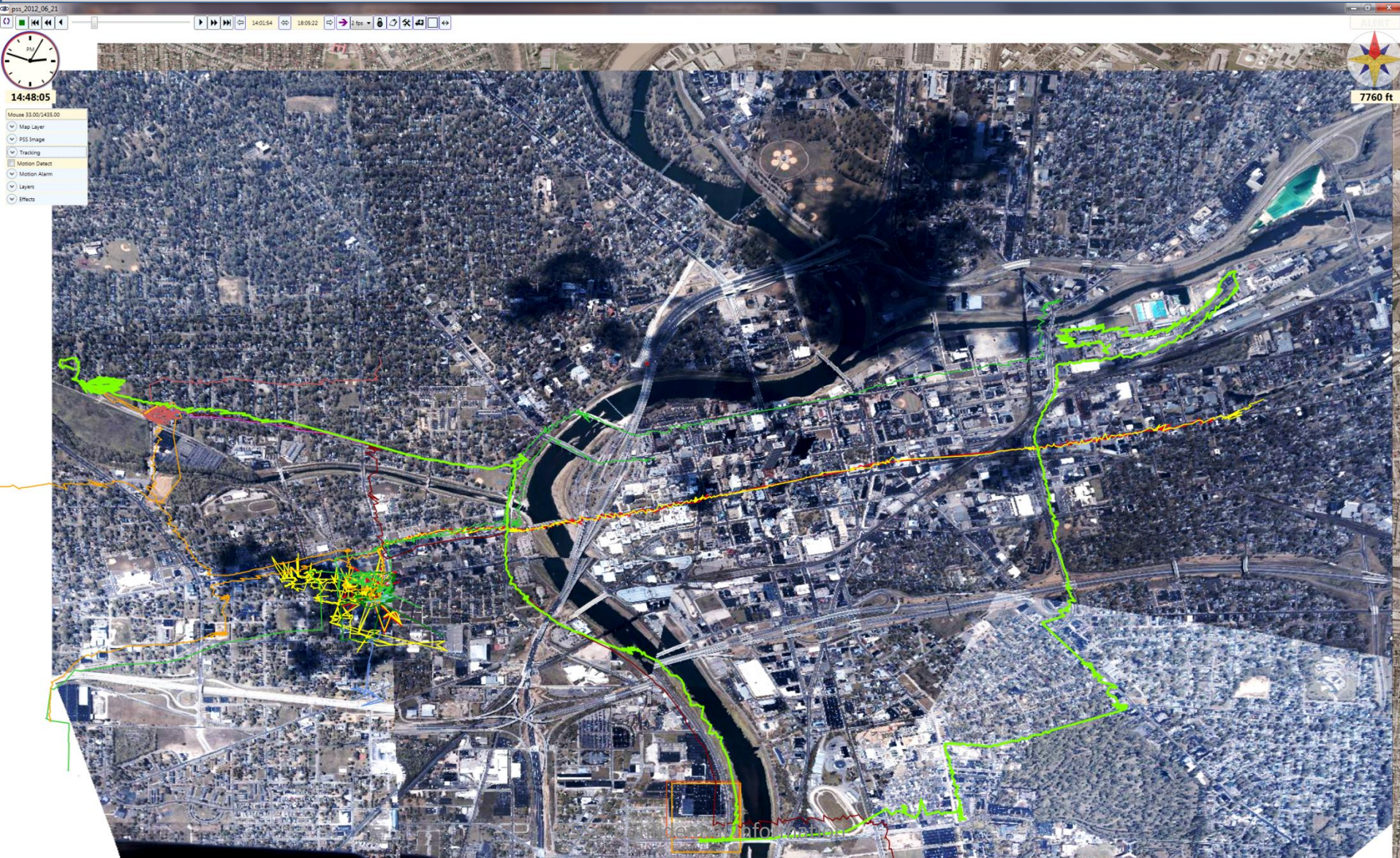


Wide Area Airborne Surveillance

Criminal Drug Network Investigation



Persistent Surveillance Systems





Persistent Surveillance Systems

Investigation Statistics

- Through **one day** of network investigation at a requested location between 14:01:54 – 18:05:22 PSS analysts were able to discover
 - **7** connected locations
 - **5** potential suspects on foot
 - **14** potential suspect vehicles
- All locations and vehicles connected with this event can be provided to detectives