

# IAM

# A PRINT TEST

---

**AVANT D'IMPRIMER VOTRE PATRON, ASSUREZ VOUS QUE LES REGLAGES DE VOTRE IMPRIMANTE SOIENT EN TAILLE 100%.**

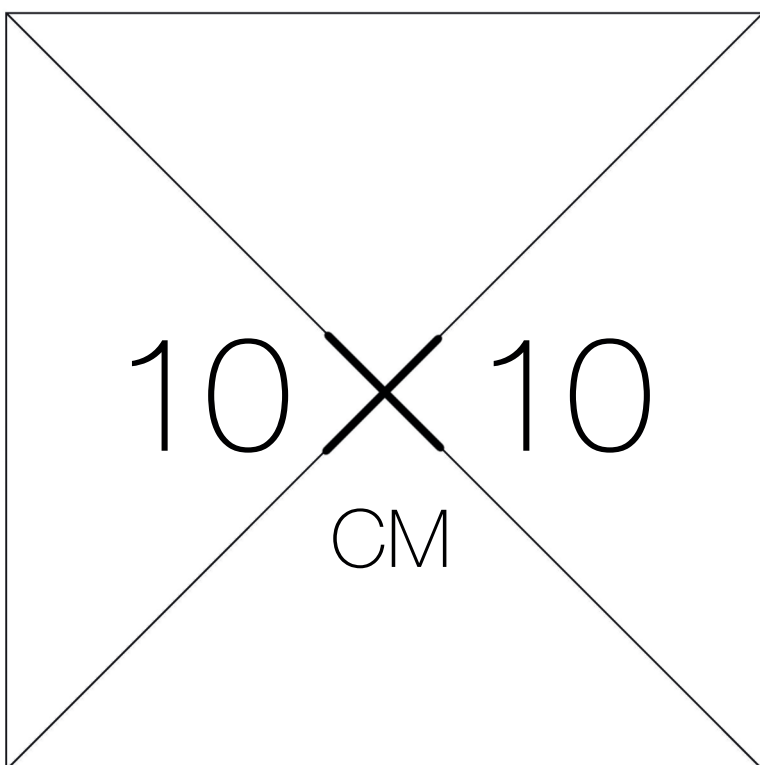
BEFORE PRINTING YOUR PATTERN, MAKE SURE YOUR PRINTER'S SETTINGS ARE SET ON 100 %.

**Si vous n'êtes pas sûre des réglages de votre imprimante, faites le test d'impression avec cette première page : un carré imprimé de 10X10 cm. Si le carré imprimé sort plus grand ou plus petit, il vous faut revoir les options d'impression. Quand vous avez imprimé votre carré avec les bonnes valeurs, vous pouvez imprimer le reste de votre patron.**

If you are not sure, print this page only and verify that the square is 10 cm by 10 cm. If the printed square is smaller or larger, check your printer's scale options and make sure they are set at 100%. Once the square is at the right value, you can print the entire document.

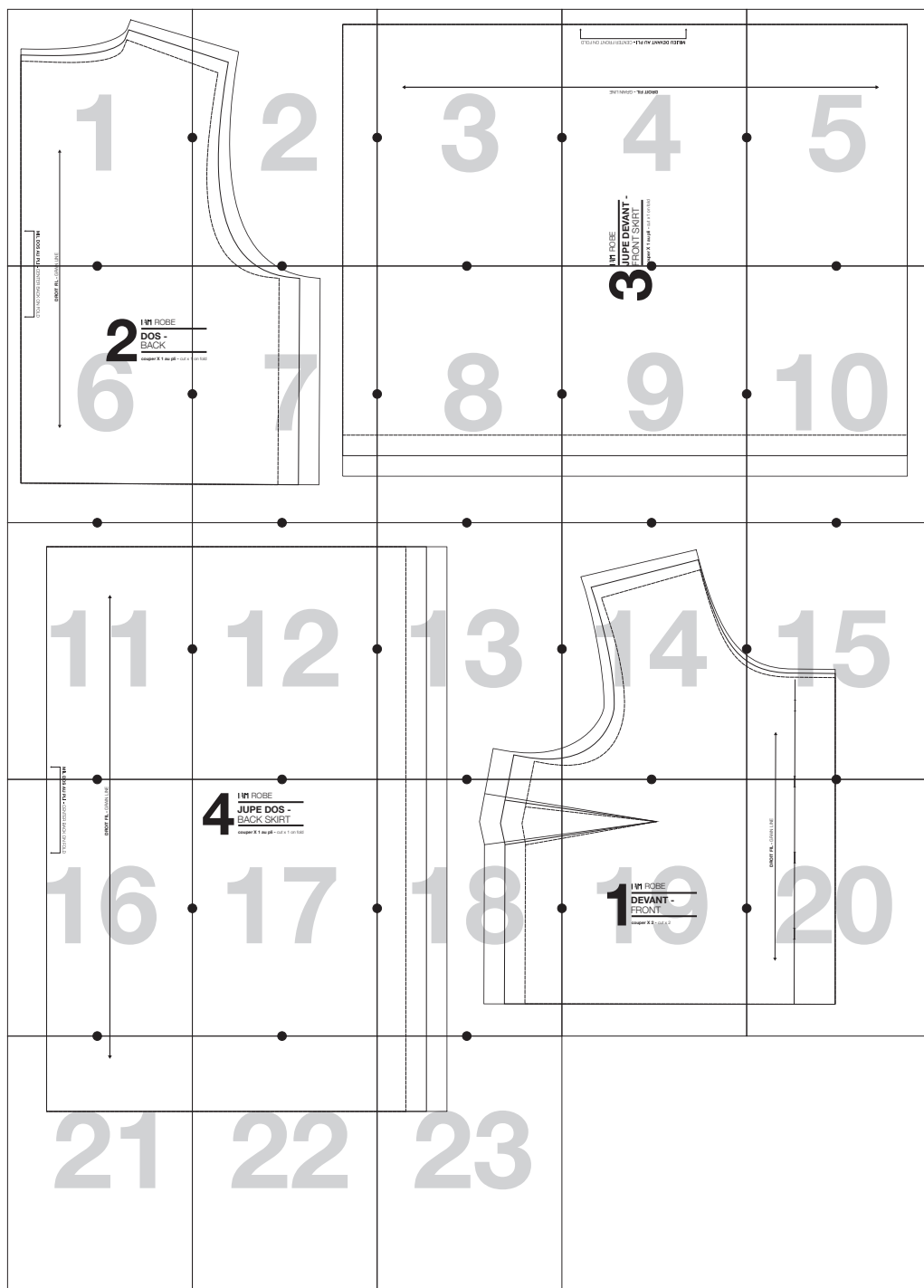
**UNE FOIS VOTRE PATRON IMPRIME, COLLEZ LES FEUILLES ENSEMBLE EN SUIVANT LE PLAN D'ASSEMBLAGE (PAGE SUIVANTE).**

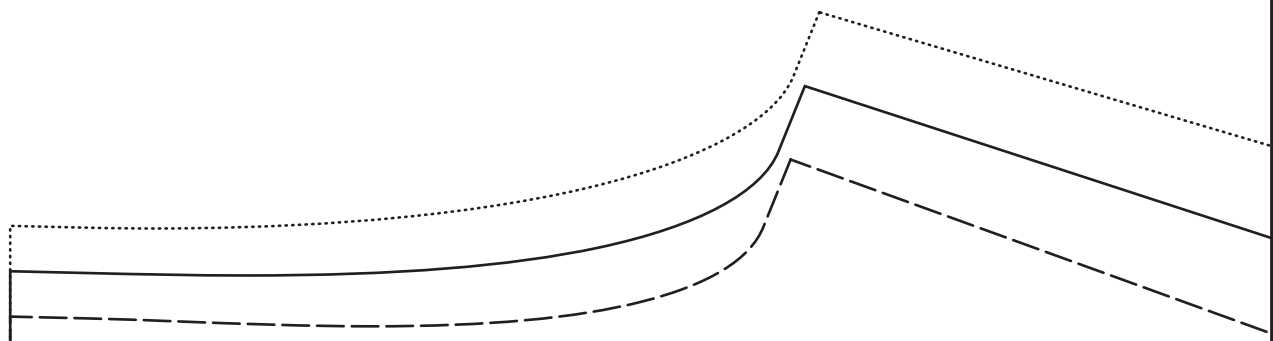
ONCE YOU HAVE PRINTED YOUR PATTERN, STICK THE PAGES TOGETHER AS SHOWN ON THE ASSEMBLY PLAN (NEXT PAGE).



# IAM ROBE

## MON COURS DE MACHINE ACOUDRE

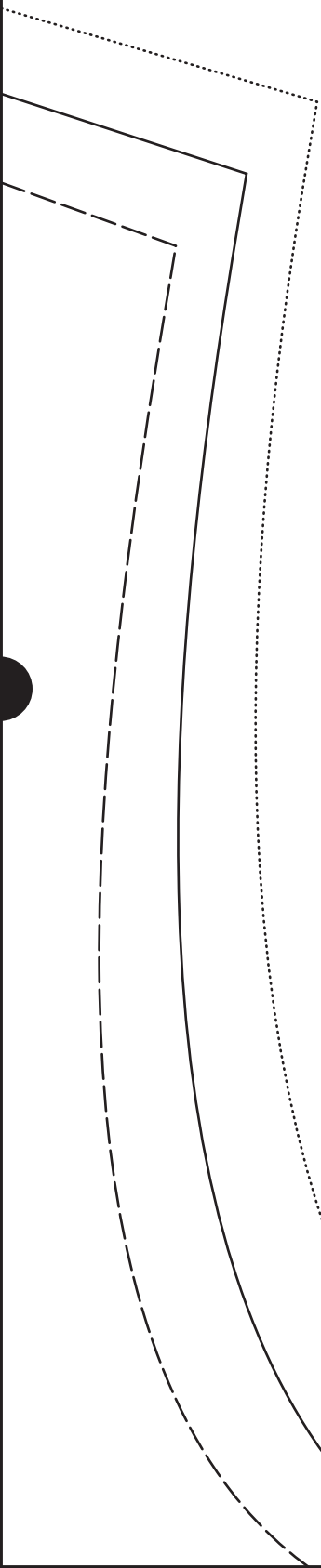




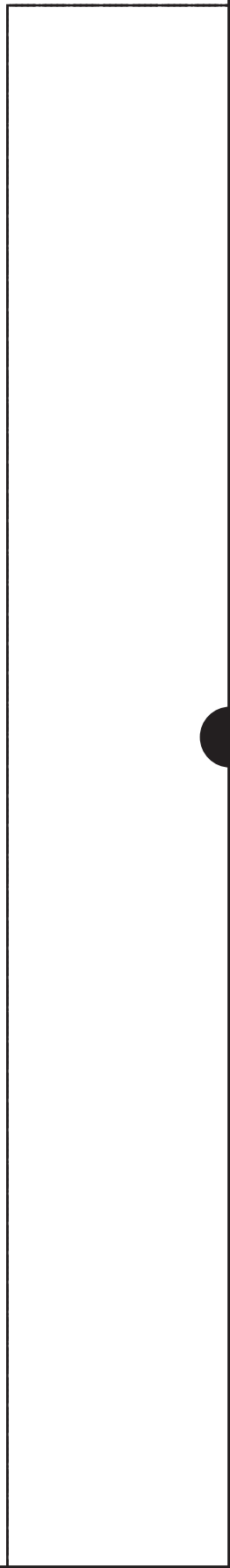
MIL DOS AU PLI

N LINE





2



3



**AM ROBE**  
**JUPE DEVANT -**  
**FRONT SKIRT**

paper X 1 au pli - cut x 1 on fold



**DROIT FIL - GRAIN LINE**

**MILIEU DEVANT AU PLI - CENTER FRONT ON FOLD**





5

IAM ROBE

**DOS -  
BACK**

couper X 1 au pli - cut x 1

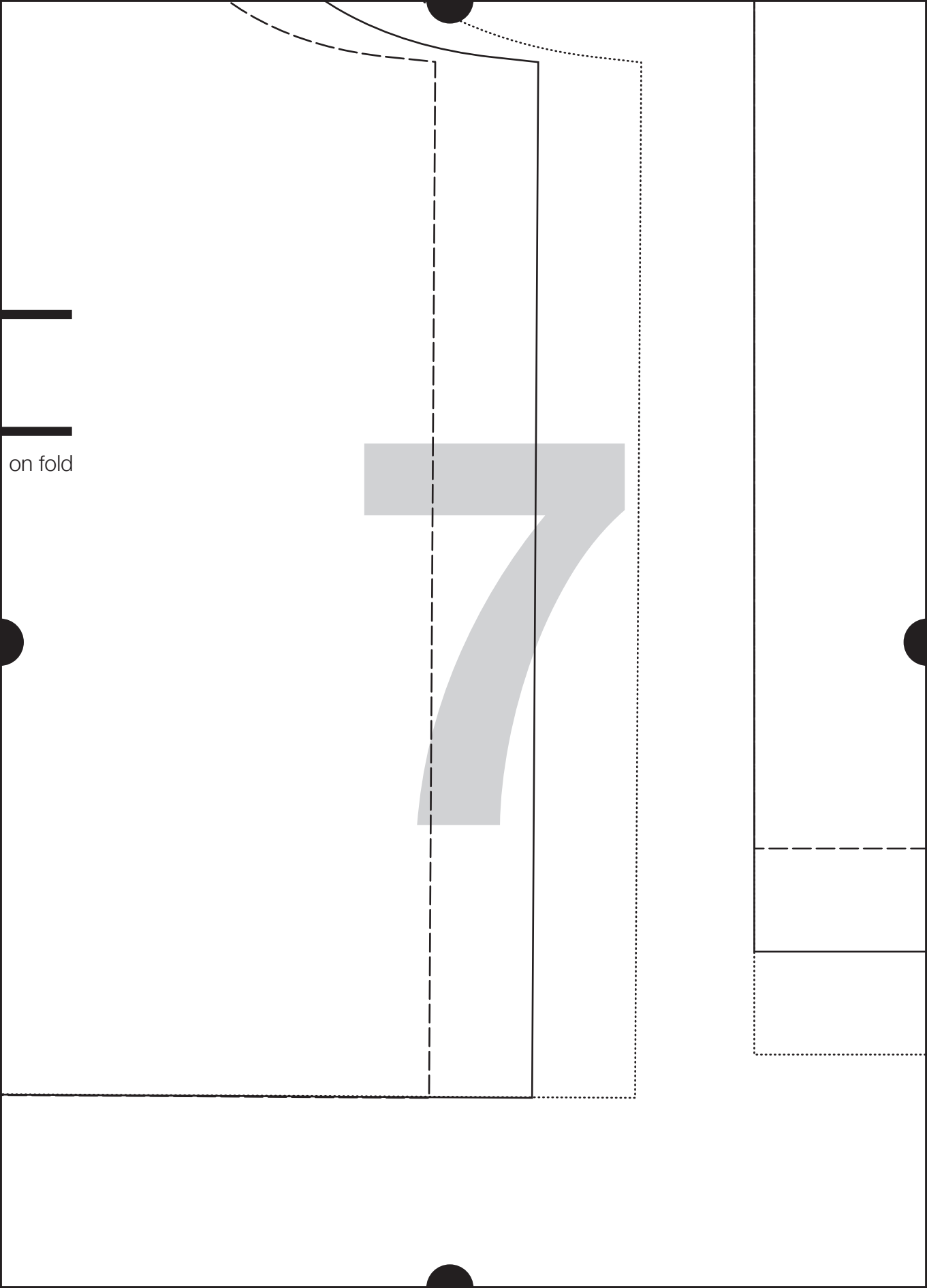
62

DROIT FIL - GRA

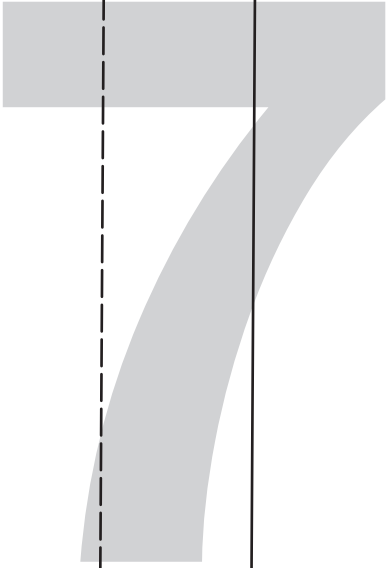
CENTER BACK ON FOLD







on fold



8



3

9



10

Blank writing area for the first row, bounded by a dashed top line and a solid bottom line.

Blank writing area for the second row, bounded by a solid top line and a dotted bottom line.

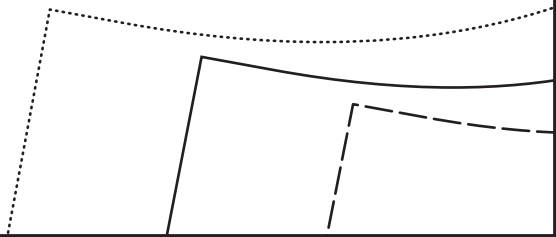


MILD D

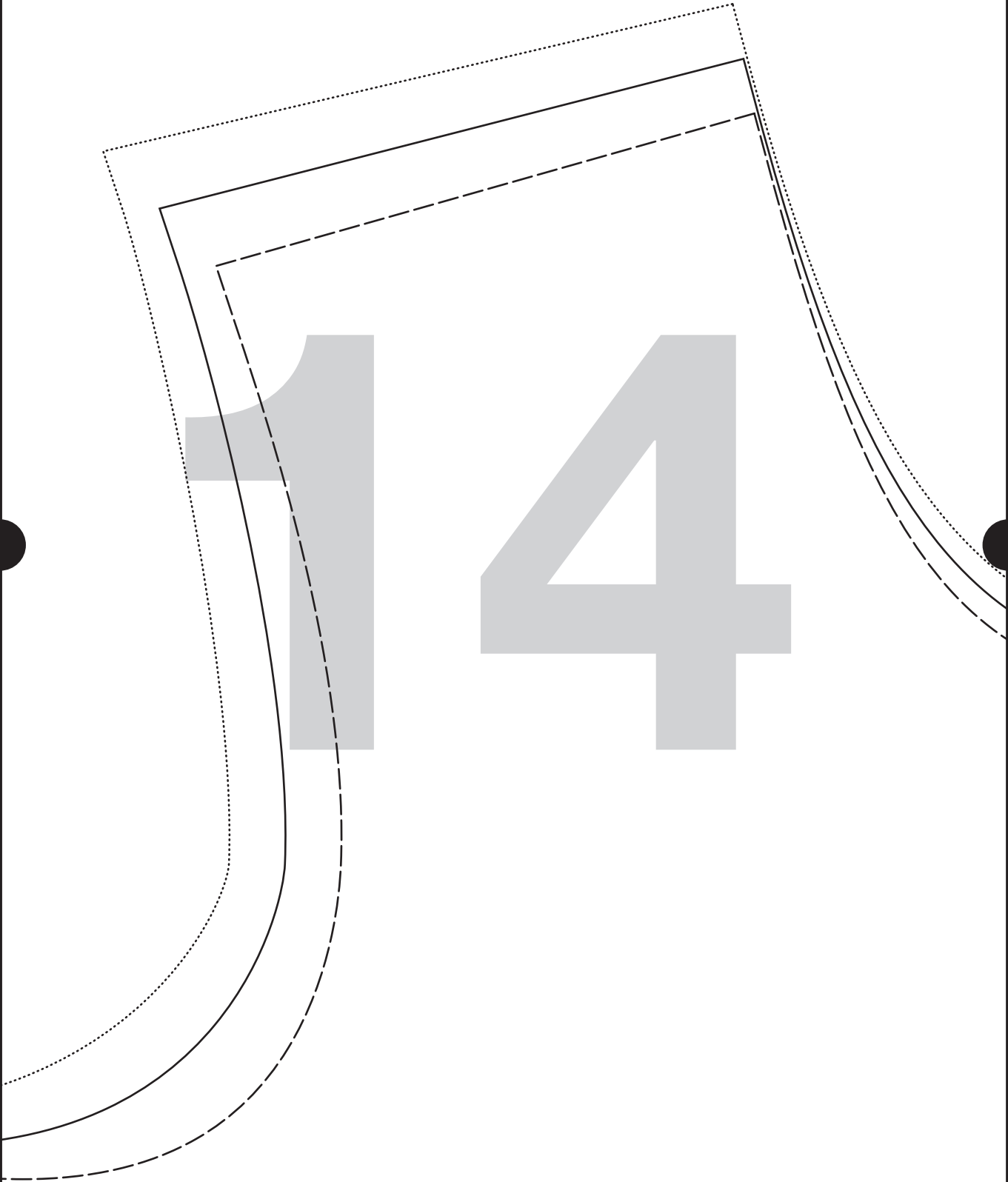
12

1

3

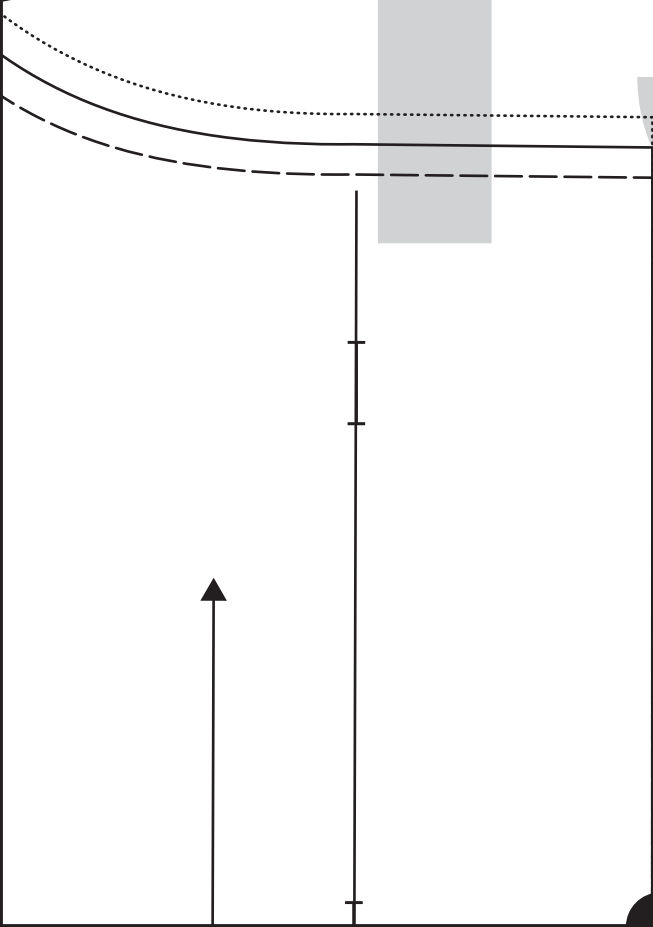


14





15



16

DROIT FIL - GRAIN LINE

16

DROIT AU PLI - CENTER BACK ON FOLD



4

IAM ROBE

---

**JUPE DOS -**  
BACK SKIRT

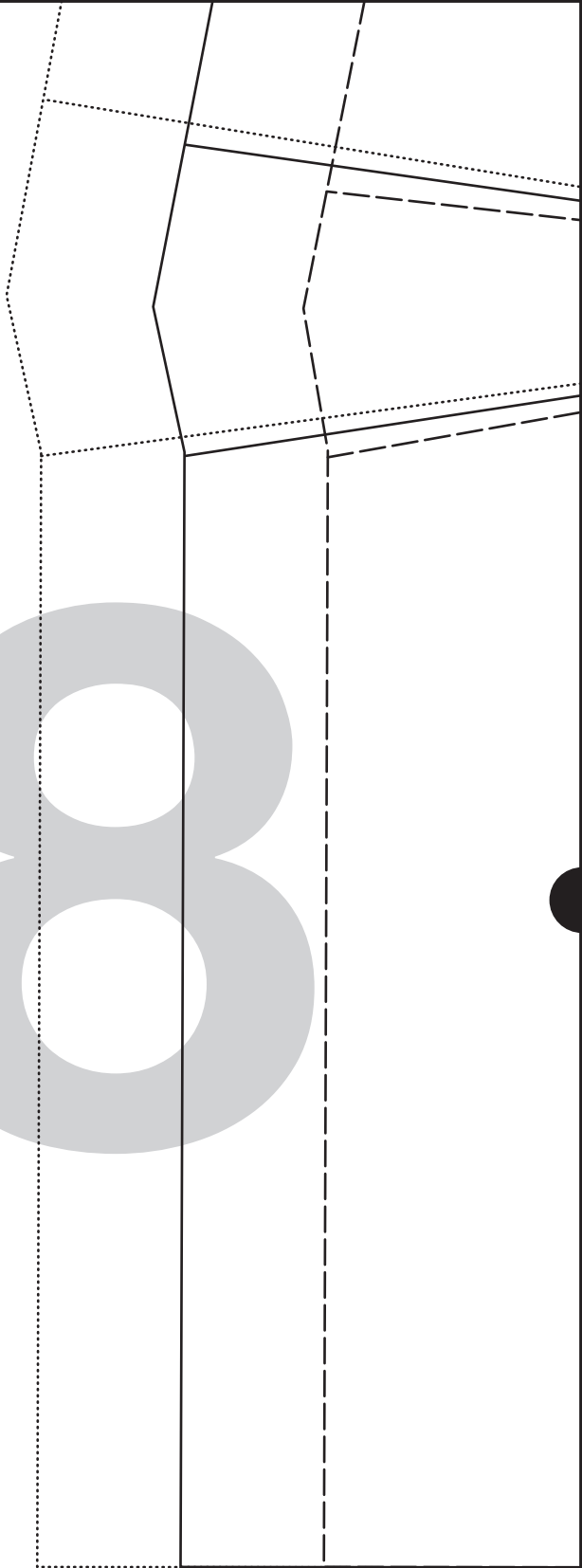
---

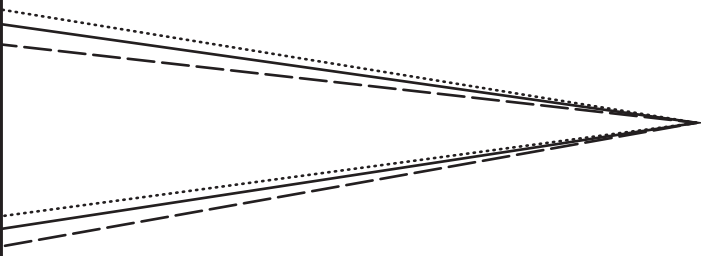
couper X 1 au pli - cut x 1 on fold

17

1

8





**1** **10**

**10** **AM ROBE**

---

**DEVANT -**

**FRONT**

---

**couper X 2 - cut x 2**

**DROIT FIL - GRAIN LINE**



20



21

22



23