



ST JAMES'S CLUB

PRIVATE FUNCTIONS

www.stjc.org.uk

The St. James's Club | 45 Spring Gardens | Manchester | M2 2BG

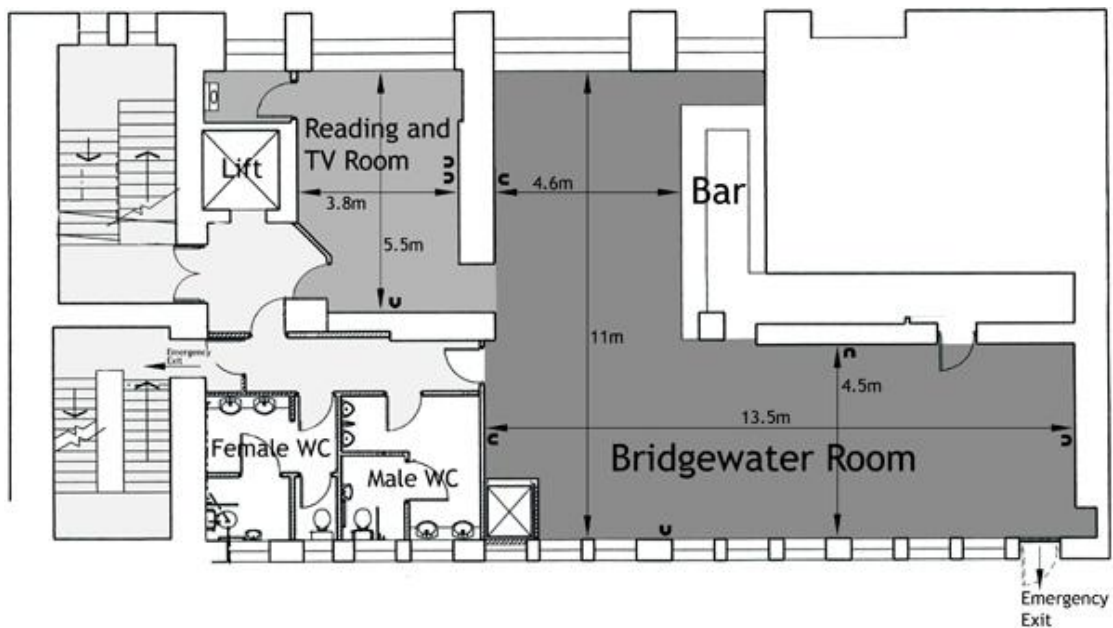


BRIDGEWATER

Capacities:

Dining	60 guests
Oval Table	42 guests
Drinks reception	120 guests
Cinema style	70 guests

The Bridgewater has magnificent views down the length of King Street from the Club windows. It is the largest function room seating over sixty persons or more than one hundred standing. It has a traditional bar service and also an adjoining private reading room.



CLARENDON SUITE

Capacities:

Dining/Board room	22 guests
Round dining tables	28 guests
Cinema style	30 guests
Drinks reception	50 guests

The Clarendon is a beautiful, architectural, wood panelled dining room with an adjoining ante-room which can be used as a reception area.

It is available for private dining, celebrations, lectures, training seminars with theatre style seating, meetings, and presentations using the Club's portable projector and retractable large screen.

This room is equipped with secure internet and telephone communications.





ALBION ROOM

Capacities:

Board room/Dining 6-20 guests

The Albion room has a comfortable and cosy feel whilst still showing the Grade II listed features. This can be used for private dining with silver service or as a discreet meeting room with internet and projector facilities.

FINE DINING AND CATERING

Three course dining From £25 per person
Canapés From £10 per person

Finger buffet From £15 per person
Breakfast From £12.95 per person

Prices include VAT at 20%.



ROOM HIRE RATES

We offer a 25% discount on room hire for private bookings to organisations that have a member of the St. James's Club amongst their staff.

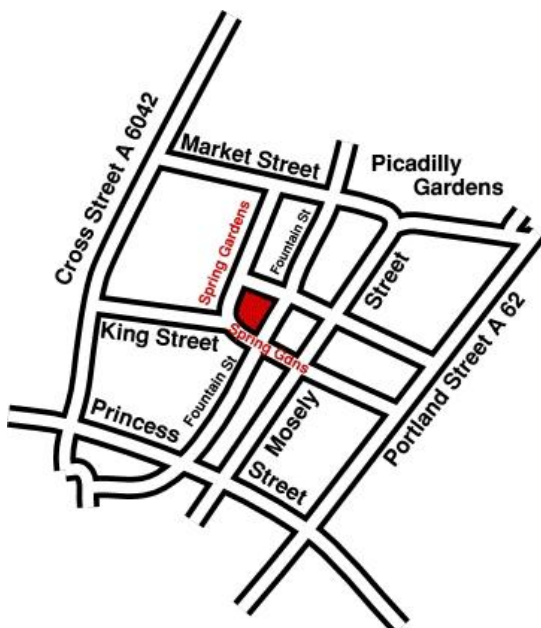
To enquire about room availability, menu options or to make a booking please contact our Front of House Manager on 0161 829 3004.

If you would like to apply for membership please contact the Club office on 0161 829 3000.

	NON-MEMBERS		MEMBERS	
	CATERED ROOM HIRE*	UNCATERED ROOM HIRE*	CATERED ROOM HIRE*	UNCATERED ROOM HIRE*
CLARENDON				
HALF DAY (8am-5pm)	£100	£200	£75	£150
FULL DAY (8am-5pm)	£175	£350	£130	£260
EVENING (5pm +)	£100	£200	£75	£150
ALBION				
HALF DAY (8am-5pm)	£75	£150	£56	£112
FULL DAY (8am-5pm)	£150	£300	£112	£226
EVENING (5pm +)	£75	£150	£56	£112
BRIDGEWATER				
BREAKFAST	£175	£350	£130	£260
LUNCH	£175	£350	£130	£260
DINNER/EVENING FUNCTION	£175	£350	£130	£260

* All room hire rates exclude 20% VAT
There is a 10% service charge on food and beverage sales for private bookings.
Additional charges apply when a function is to be held on a Saturday or Sunday.

LOCATION



The St. James's Club is located in the centre of Manchester at the head of King Street where it meets Spring Gardens. The Club's entrance is the brass-plated banking door between Vivienne Westwood's flagship store and the Rosso restaurant.

Parking

Surrounding the Club is over 50 on-street parking bays which are chargeable between 8AM-8PM. 1 hours parking costs £2.70 to a maximum of 2 hours costing £5.40. Parking after 6PM allows you to park until 8AM the following morning.

The nearest NCPs are on Chorlton Street and China Town and are within convenient walking distance.

Trains

Piccadilly Train Station and Oxford Road Station are within a 10 minute walk or 5 minute taxi ride of the Club.