



Region 3 ASPCA/NHSAA Maclay Championship

USHJA National Hunter Derby

SEMF Jumper, Hunter and Equitation

September 17 - 20, 2015

Jacksonville Equestrian Center, Jacksonville, FL

USEF #329641 National & Jumper Level 2 rated

www.southeastmedalfinals.com

enter online at www.horseshowsonline.com

Back to Basics

The Timeless Classics

TM



Hadfield's
SADDLERY

**Special Thanks
to Molly Braswell**

© 2014 David Mullinix
Photography, All Rights Reserved

(800) 854-RIDE • (561) 793-2947 • www.hadfieldssaddlery.com
300 Business Parkway, Suite B-100, Royal Palm Beach, FL 33411

Proud Sponsor of the Southeast Medal Finals

International Leaders in Equestrian Sports Media



Public Relations
Photojournalism
Social Media
Website Development
Event Management

Follow us for the latest news!



PhelpsMediaGroup.com 561.753.3389



Photo by Rebecca Walton for Phelps Media Group

South East Medal Finals

329641

National rated in Pony Hunter, Junior Hunter, Amateur Owner Hunter
'C' Rated Children's & Adults Hunters & Jumper Level 2



UNITED STATES EQUESTRIAN FEDERATION

The national governing body for equestrian sport



Equestrian

The official magazine of the USEF



Changing the way you look at equestrian sport



shopUSEF.com

A fresh approach to classic equestrian style



The United States Equestrian Federation was founded in the spirit of fair play and the safety and well-being of both human and equine athletes in competition. Join 84,000 members who love horses & equestrian sport. Visit usef.org for more information



Dear Friends, Trainers, Exhibitors
& Supporters of Southeast Medal Finals!

Welcome to the 4th annual Southeast Medal Finals. You asked, we listened and hope that you are as excited about this years format as we are! Perhaps the most significant difference is that this year, each division will run separately and has its own Finals. A few other things we are thrilled to announce include a Live Stream of all the Finals, provided by Holly Hill Horse Transport. Friends and Family can watch you compete from anywhere in the world! Bryan Morgan will be producing commercials during the live feed. Parents, family and friends can take advantage of this by offering their favorite competitor or stable a word of encouragement or well wishes, so let your imagination run wild - the options are endless and we look forward to having some fun with this. Facility improvements can also not be overlooked. You will notice new rings and footing among the many items the new Management Team are working on.

I am aware that the qualifying criteria can be a little confusing. Simple is our aim, and our highest priority is to make this show an obtainable goal for all. I also have some great news for those who are not yet qualified for 2015 - you can qualify at the SEMF Show by competing and placing in the offered "Wild Card" classes throughout the weekend! I truly want riders to be able to qualify and to more importantly, enjoy this event. I have heard more than once, that barns come to the SEMF and love it so much, that they have decided to return year after year and have decided to make SEMF "their finals," while many trainers and riders find it the perfect prep before heading up north to compete in the fall Indoor shows. Please do not be fooled, competition is stiff with many top riders and horses competing.

I truly hope you will bring the whole family to enjoy this horse show, as Jacksonville is not just for the horsey set. An 18 hole public golf course is right across the street from the show grounds and a public swimming center is on the same property as the show. Fine dining, arts, entertainment, shopping and all of the hip things that Jacksonville has to offer are only a short car ride away.

Come enjoy some southern hospitality and some stiff competition at Southeast Medal Finals.

I look forward to seeing you at the Ring!

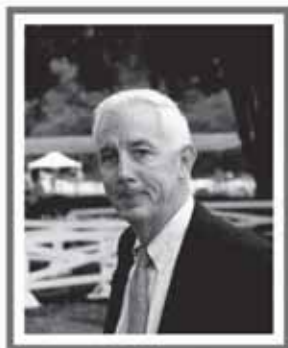
James Lala
SEMF Creator

www.SoutheastMedalFinals.com





The Leo Conroy Maclay Grant



Established to commemorate Leo Conroy's loyalty and dedication to the National Horse Show and the ASPCA Maclay Finals – both held a special place in Leo's heart, having been a rider and equitation trainer for most of his life.

The Leo Conroy Maclay Grant will be awarded to up to five (5) Maclay riders who demonstrate a financial need in order to participate in the Maclay Finals at the NHS.

- The Leo Conroy Maclay Grant is open to riders who qualify to compete in the ASPCA Maclay Finals through the Regional competitions.
- Selected riders will receive entry fees and stabling at the ASPCA Maclay Finals at the NHS and an additional stipend to cover show related expenses (\$2000 value).
- Beginning September 12, applicants can apply by visiting www.NHS.org.



www.NHS.org | 859.608.3709 | info@nhs.org
Alltech Arena • Kentucky Horse Park • Lexington, Kentucky

Southeast Medal Finals

September 17 - 20, 2015

USEF 'National' & 'Jumper Level 2*' Rated

Show Manager:

James Lala/Lala Land Productions, LLC
Philip J. DeVita
Stadium Jumping, Inc.

Course Designers:

Philip J. DeVita
Eric Mayberry
James Lala

Judging Committee**(Hunter & Jumper & Equitation):**

Carol Coleman
Jen Drahan
Dale Pederson
Ron Smith

and Region 3 ASPCA Maclay Judges:

Chance Arakelian
Kip Rosenthal

Show Secretary:

Susan Morrissey
(941) 527-6602
susiemorr@aol.com

Announcers:

John Bahret

EMT:

Deana Barkoskie

Farrier: tbd**Live Web Feed:**

provided by Bryan Morgan
courtesy of Holly Hill Transport

Photographer:

Randi Muster Photography
mustphoto.com
Victoria DeMore Photography
victoriademorephoto.com

Stabling: tbd**USEF Steward:**

Marilyn 'Mesa' Hart

Veterinarian:

Mandarin Equine Veterinary
Services (904) 292-4744

Golf Cart Rental

Golf Carts are available for weekly and daily rental.

\$250/week or \$75/day.

Please email semedalfinals@gmail.com to reserve your cart.

Jacksonville Equestrian Center
13611 Normandy Blvd., Jacksonville, FL 32221
www.SoutheastMedalFinals.com



SOUTHEAST MEDAL FINALS SEPTEMBER 17 - 20

THURSDAY

Coliseum 8:00 am	Ring 3 9:00 am	Ring 2 8:00 am
200 Schooling Hunter 2'	900 Jacksonville Jumper .60m	8am - 11am Ticketed Warm-Up
201 Schooling Hunter 2'6"	910 Atlantic Jumper .75m	
203 Schooling Hunter 3'	916 Florida Jumper .85m	not before 11:00am
205 Schooling Hunter 3'3"	950 Low Children's II 2(b)*	301 WC SEMF Pony Medal
207 Schooling Hunter 3'6"	955 Low Adult Jumper II 2(b)*	320 WC SEMF Pony Hunter
	926 Lala Land Jumper 1.0m	303 WC SEMF 2'6" Children's Medal
905 Jaguar Jumper .65m	960 High Children's II 2(b)*	322 WC SEMF 2'6" Children's Hunter
915 Florida Jumper .85m	965 High Adult Jumper II 2(b)*	305 WC SEMF 2'6" Adult Medal
920 Sunshine Jumper .95m	931 Intracoastal Jumper 1.10m	324 WC SEMF 2'6" Adult Hunter
925 Lala Land Jumper 1.0m		307 WC SEMF Adult Medal
930 Intracoastal Jumper 1.10m		326 WC SEMF Adult Hunter
935 Beach Jumper 1.30m		309 WC SEMF Junior Medal
970 1.20m Low Junior II 2(b)*		328 WC SEMF Children's Hunter
975 1.20m Low AO II 2(b)*		330 WC SEMF Junior Hunter 3'3"
985 1.30m High AO II 2(b)		331 WC SEMF AO Hunter 3'3"
980 1.30m High Junior II 2(b)		332 WC SEMF AO Hunter 3'6"
		333 WC SEMF Junior Hunter 3'6"

* denotes Wild Card class and first class of the division.

FRIDAY

Coliseum 8:00 am	Ring 2 8:00 am	Ring 3 8:00 am
901 Jacksonville Jumper .60m	850 WIHS Hunter Phase	902 Jacksonville Jumper .60m
906 Jaguar Jumper .65m	208 Schooling Hunter 3'6"	907 Jaguar Jumper .65m
911 Atlantic Jumper .75m	430 Large Junior Hunter 15-17 o/f*	912 Atlantic Jumper .75m
921 Sunshine Jumper .95m	431 Large Junior Handy 15-17 o/f	917 Florida Jumper .85m
932 Intracoastal Jumper 1.10	420 Large Junior Hunter 14&Un o/f*	956 Low Adult Jumper II 2(b)
	421 Large Junior Handy 14&Un o/f	951 Low Children's Jumper II 2(b)
990 \$5,000 Geddaway Farm	410 Small Junior Hunter 15-17 o/f*	933 Intracoastal Jumper 1.10m
1.30m High Junior	411 Small Junior Handy 15-17 o/f	851 WIHS Jumper Phase
Jumper Classic, II 2(a)	400 Small Junior Hunter 14&Un o/f	854 Platinum Performance/USEF
	401 Small Junior Handy 14&Un o/f	Show Jumping Talent Search
991 \$5,000 Reid & Associates.	206 Schooling Hunter 3'3"	
Equine Clinic 1.30m High AO	440 Junior Hunter 3'3" o/f*	
Jumper Classic, II 2(a)	441 Junior Hunter Handy 3'3" o/f	
	204 Schooling Hunter 3'	
Jumper Finals	310 WC SEMF Junior Medal	
132 \$500 North Run Southeast	323 WC SEMF Children's Hunter	
High Children's Jumper Finals	308 WC SEMF Adult Medal	
II, 2(a)	327 WC SEMF Adult Hunter	
133 \$500 Wellington Quarantine	202 Schooling Hunter 2'6"	
Southeast High Adult Jumper	306 WC SEMF 2'6" Adult Medal	
Finals II 2(a)	325 WC SEMF 2'6" Adult Hunter	
	304 WC SEMF 2'6" Children's Medal	
134 \$1,500 Southeast Low Junior	329 WC SEMF 2'6" Children's Hunter	
Jumper Finals II 2(a)	214 Schooling Pony Hunter	
	(2'3", 2'6", 3')	
135 \$1,500 Southeast Low AO	302 WC SEMF Pony Medal	
Jumper Finals II 2(a)	321 WC SEMF Pony Hunter	

* denotes Wild Card class and first class of the division.



SOUTHEAST MEDAL FINALS, SEPTEMBER 17 - 20

SATURDAY

Coliseum 7:30 am

- 130 \$500 Long Creek Farms
Southeast Low Adult Jumper
Finals II 2(a)
- 131 \$500 Boy-O-Boy Bridleworks
Low Children's Jumper
Finals II 2(a)
- Medal Finals**
- 102 SEMF Pony Medal Finals
- 101 Riding Habit SEMF Adult
Medal Finals
- 103 Ovation SEMF 2'6" Adult
Medal Finals
- 104 GGT Footing SEMF 2'6"
Children's Medal Finals
- 999 Parent Leadline
- 100 Phelps Media SEMF Junior
Medal Finals
- 856 Maclay Regional Warm-Up

Grass Ring 8:00 am (Hand Walk)

- 9:00am - Hunter Finals Round 1**
- 105 SEMF Pony Hunter Finals
- 108 AG Equestrian SEMF 2'6"
Children's Hunter Finals
- 111 SEMF 2'6" Adult Hunter Finals
- 114 SEMF Adult Hunter Finals
- 117 Tenney's Custom Saddlery
SEMF Children's Hunter Finals
- 123 SEMF AO Hunter Finals
- 120 C.M. Hadfield's SEMF
Junior Hunter Finals
- 995 \$2,500 USHJA National
Hunter Derby

Coliseum 7:30 am

- Hunter Finals Round 2**
- 121 C.M. Hadfield's SEMF Junior
Hunter Finals
- 124 SEMF AO Hunter Finals
- 118 Tenney's Custom Saddlery
SEMF Children's Hunter Finals
- 115 SEMF Adult Hunter Finals
- 112 SEMF 2'6" Adult Hunter Finals
- 109 AG Equestrian SEMF 2'6"
Children's Hunter Finals
- 106 SEMF Pony Hunter Finals
- 1:30 pm
- 875 ASPCA/Maclay Regional Finals

Ring 2 8:30 am

- 500 AO Hunter 18-35 o/f*
- 501 AO Hunter Handy 18-35 o/f
- 510 AO Hunter Over 35 o/f*
- 511 AO Hunter Handy Over 35 o/f
- 432/433 Large Junior Hunter 15-17 o/f
- 434 Large Junior Hunter 15-17 u/s
- 422/423 Large Junior Hunter 14 & Un o/f
- 424 Large Junior Hunter 14 & Un u/s
- 412/413 Small Junior Hunter 15-17 o/f
- 414 Small Junior Hunter 15-17 u/s
- 402/403 Small Junior Hunter 14 & Un o/f
- 404 Small Junior Hunter 14 & Un u/s
- 442/443 Junior Hunter 3'3" o/f
- 444 Junior Hunter 3'3" u/s
- 520 AO Hunter 3'3" 18-35 o/f*
- 521 AO Hunter Handy 3'3" 18-35 o/f
- 530 AO Hunter 3'3" Over 35 o/f*
- 531 AO Hunter Handy 3'3" Ov 35 o/f
- 857 Ariat Adult Medal
- 700 Adult Hunter 18-35 o/f*
- 701 Adult Hunter 18-35 o/f
- 710 Adult Hunter Over 35 o/f*
- 711 Adult Hunter Over 35 o/f
- 858 THIS Children's Medal
- 730 Children's Hunter 15-17 o/f*
- 731 Children's Hunter 15-17 o/f
- 720 Children's Hunter 14&Un o/f*
- 721 Children's Hunter 14&Un o/f
- 859 U.S. Pony Medal
- 600 Small Pony Conf. Hunter o/f*
- 601 Small Pony Handy Hunter o/f
- 610 Medium Pony Conf. Hunter o/f*
- 611 Medium Pony Handy Hunter o/f
- 620 Large Pony Conf. Hunter o/f*
- 621 Large Pony Handy Hunter o/f

Ring 2 continued

- 740 Children's Pony Hunter o/f
- 741 Children's Pony Hunter o/f
- 750 2'6" Adult Hunter o/f*
- 751 2'6" Adult Hunter o/f
- 760 2'6" Children's Hunter o/f*
- 761 2'6" Children's Hunter o/f
- * denotes first class of division & Wild
Card Class

Ring 3 7:30am

- 853 Pessoa USEF Hunter Seat Medal
- 855 ASPCA Maclay
- 927 Lala Land Jumper 1.0m
- 961 High Children's Jumper II 2(b)
- 966 High Adult Jumper II 2(b)
- 971 1.20m Low Junior Jumper II
2(b)
- 976 1.20m Low AO Jumper II 2(b)
- 986 1.30m High AO Jumper II 2(b)
- 981 1.30 High Junior Jumper II 2(b)

Ring 2 8:00 am

- 215 Children's Pony Warm Up
- 742/743 Children's Pony Hunter o/f
- 744 Children's Pony Hunter u/s
- 216 Opp Junior Cross Rail Hunter
Warm Up
- 804 Opp Junior Cross Rails Medal
- 801/802 Opp Junior Cross Rails Hn o/f
- 805 Opp Junior Cross Rails Eq. Flat
- 803 Opp Junior Cross Rails Hn u/s
- 217 Opp Adult Cross Rail Hunter
Warm Up
- 813 Opp Adult Cross Rails Medal
- 810/811 Opp Adult Cross Rails Hn o/f
- 814 Opp Adult Cross Rails Eq. Flat
- 812 Opp Adult Cross Rails Hn u/s

Ring 3 9:00 am

- 982 1.30M High Junior Jumper II 2.1
- 987 1.30M High AO Jumper II 2.1
- 977 1.20M Low AO Jumper II 2.1
- 972 1.20M Low Junior Jumper II 2.1
- 962 High Children's Jumper II 2.1
- 967 High Adult Jumper II 2.1
- 957 Low Adult Jumper II 2.1
- 952 Low Children's Jumper II 2.1

Grass Ring 7:30 am

- 702/703 Adult Hunter 18-35 o/f
- 704 Adult Hunter 18-35 u/s
- 712/713 Adult Hunter Over 35 o/f
- 714 Adult Hunter Over 35 u/s
- 732/733 Children's Hunter 15-17 o/f
- 734 Children's Hunter 15-17 u/s
- 722/723 Children's Hunter 14 & U o/f
- 724 Children's Hunter 14 & U u/s
- 752/753 2'6" Adult Hunter o/f
- 754 2'6" Adult Hunter u/s
- 762/763 2'6" Children's Hunter o/f
- 764 2'6" Children's Hunter u/s
- 522/523 AO Hunter 3'3" 18-35 o/f
- 524 AO Hunter 3'3" 18-35 u/s
- 532/533 AO Hunter 3'3" Over 35 o/f
- 534 AO Hunter 3'3" 36+ u/s
- 502/503 AO Hunter 18-35 o/f
- 504 AO Hunter 18-35 u/s
- 512/513 AO Hunter Over 35 o/f
- 514 AO Hunter Over 35 u/s
- 622/623 Large Pony Hunter o/f
- 624 Large Pony Hunter u/s
- 612/613 Medium Pony Hunter o/f
- 614 Medium Pony Hunter u/s
- 602/603 Small Pony Hunter o/f
- 604 Small Pony Hunter u/s

SUNDAY



SOUTHEAST MEDAL FINALS

MEDAL FINALS

Entry Fee: \$125

Ribbons: 1st - 12th Place. Trophy & Award for First Place.

Exhibitors must Ride for Ribbons or forfeit placing.

Riders who have earned a First (1), Second (2) or Third (3) Place in a Southeast Medal Qualifying Class at a Member Event or riders who have earned a First (1) or Second (2) Place in a comparable Medal or Equitation Class at non-member events where the jumps and specifications are the same or similar may compete in their respective Medal Finals. Riders are responsible for submitting their qualifying results from non-member events to SEMF directly.

Medal Finals will be two rounds with the top 12 riders returning to test in reverse order after the first round using USEF tests 1-19.. Class to be judged in accordance with current USEF standards for equitation. Conventional tack per USEF EQ 109.2. Water obstacles are not permitted.

*These classes will NOT count towards USEF or USHJA HOY or Zone awards.

100 Phelps Media SEMF Junior Medal Finals

Jumps 3' in the first round and up to 3'3" in the second round.

101 Riding Habit SEMF Adult Medal Finals

Jumps 3' in the first round and up to 3'3" in the second round.

102 SEMF Pony Medal Finals

Jumps 2'3" for Small Ponies, 2'6" for Medium Ponies and 2'9" – 3' for Large Ponies.

103 Ovation SEMF 2'6" Adult Medal Finals

Jumps 2'6".

104 GGT Footing SEMF 2'6" Children's Medal Finals

Jumps 2'6".

HUNTER FINALS

Entry Fee: \$125

Ribbons 1st - 12th Place. Trophy & Award for First Place.

Exhibitors must Ride for Ribbons or forfeit placing.

Horse/rider combinations who have earned a First (1), Second (2) or Third (3) Place in a Southeast Qualifying Classic, or a Champion or Reserve Champion in the associated division at a member event or who have earned a Champion, First (1) or Second (2) Place in the Division or a First (1) or Second (2) Place in the associated classic at a non-member event may compete in their respective SEMF Hunter Finals. Riders are responsible for submitting their qualifying results from non-member events to SEMF directly.

Hunter Finals will be two rounds and will be scored numerically. Top ten scores to return in reverse order for Round 2. Class to be judged in accordance with current USEF standards for Hunters. Conventional tack per USEF HU125.

*These classes will NOT count towards USEF or USHJA HOY or Zone awards. Finals may be combined at Management Discretion.



SOUTHEAST MEDAL FINALS

105, 106 SEMF Pony Hunter Finals

Round 1 & Round 2

Jumps 2'3" for Small Ponies, 2'6" for Medium Ponies and 2'9" – 3' for Large Ponies.

108, 109 AG Equestrian SEMF 2'6" Children's Hunter Finals

Round 1 & Round 2 / Jumps 2'6".

111, 112 SEMF 2'6" Adult Hunter Finals

Round 1 & Round 2 / Jumps 2'6".

114, 115 SEMF Adult Hunter Finals

Round 1 & Round 2 / Jumps 3'.

117, 118 Tenney's Custom Saddlery SEMF Children's Hunter Finals

Round 1 & Round 2 / Jumps 3'.

120, 121 C.M. Hadfield's Saddlery SEMF Junior Hunter Finals

Round 1 & Round 2 / Jumps 3'3" or 3'6".

123, 124 SEMF Amateur Owner Hunter Finals

Round 1 & Round 2 / Jumps 3'3" or 3'6".

JUMPER FINALS

Ribbons 1st - 12th Place. Trophy & Award for First Place. Exhibitors must Ride for Ribbons or forfeit placing and winnings.

Horse/rider combinations who have earned a First (1), Second (2) or Third (3) Place in a Southeast Qualifying Classic, or a Champion or Reserve Champion in the associated division at a member event, or a Champion, First (1) or Second (2) Place in the Division or a First (1) or Second (2) Place in the associated classic at a non-member event may compete in their respective SEMF Jumper Finals. Riders are responsible for submitting their qualifying results from non-member events to SEMF directly.

Jumper Finals will be two rounds. Clear rounds will return to jump off in reverse order, with the fastest clean round returning last. Table II.2a.

*These classes will NOT count towards USEF or USHJA HOY or Zone awards.

Entry Fee: \$125 Prize Money: \$150, \$110, \$75, \$50, \$40, \$25, \$25, \$25

130 \$500 Long Creek Farms Southeast Low Adult Jumper Finals

(1.0M - 1.10 M) Table II.2(a)

131 \$500 Boy-O-Boy Bridleworks Southeast Low Children's Jumper Finals

(1.0M - 1.10 M) Table II.2(a)

132 \$500 North Run Southeast High Children's Jumper Finals

(1.10M - 1.15 M) Table II.2(a)

133 \$500 Wellington Quarantine Southeast High Adult Jumper Finals

(1.10M - 1.15 M) Table II.2(a)

Entry Fee: \$125 Prize Money: \$450, \$325, \$250, \$175, \$125, \$75, \$50, \$50

134 \$1,500 Southeast Low Junior Jumper Finals (1.20M) Table II.2(a)

135 \$1,500 Southeast Low AO Jumper Finals (1.20M) Table II.2(a)



BLUE/RED RIBBON HUNTER

Horses and ponies will be judged and given a numerical score. Scores of 77 - 100 will earn a blue ribbon. Scores of 70-76 will earn a red ribbon.

Entry Fee: \$50 per class

200	Indoor Schooling Hunter 2'
201, 202	Indoor Schooling Hunter 2'6"
203, 204	Indoor Schooling Hunter 3'
205, 206	Indoor Schooling Hunter 3'3"
207, 208	Indoor Schooling Hunter 3'6"
209	Schooling Pony Hunter (2'3", 2'6", 3')

Entry Fee: \$35 per class

215	Children's Pony Warm Up
216	Opportunity Junior Cross Rail Hunter Warm Up
217	Opportunity Adult Cross Rail Hunter Warm Up

Ticketed Warm Up - \$35 per ticket

SEMF MEDAL WILD CARD

Open to riders who have not yet qualified for the Pony Medal, 2'6" Children's Medal, 2'6" Adult Medal, Adult Medal or Junior Medal Finals.

Entry Fee: \$50 per class

301, 302	Wild Card SEMF Pony Medal
303, 304	Wild Card SEMF 2'6" Children's Medal
305, 306	Wild Card SEMF 2'6" Adult Medal
307, 308	Wild Card SEMF Adult Medal
309, 310	Wild Card SEMF Junior Medal

SEMF HUNTER WILD CARD

Open to horse/rider combinations who have not yet qualified for the Pony Hunter, 2'6" Children's Hunter, 2'6" Adult Hunter, Adult Hunter, Children's Hunter, Junior Hunter 3'6", AO Hunter 3'6", AO Hunter 3'3" or Junior Hunter 3'3" Finals.

Entry Fee: \$50 per class

320, 321	Wild Card SEMF Pony Hunter
322, 323	Wild Card SEMF 2'6" Children's Hunter
324, 325	Wild Card SEMF 2'6" Adult Hunter
326, 327	Wild Card SEMF Adult Hunter
328, 329	Wild Card SEMF Children's Hunter
330	Wild Card SEMF Junior Hunter 3'3"
331	Wild Card SEMF AO Hunter 3'3"
332	Wild Card SEMF AO Hunter 3'6"
333	Wild Card SEMF Junior Hunter 3'6"



JUNIOR HUNTER

Entry Fee: \$200 for this section; fences 3'6" or 3'3" (USEF HU111 & HU118)

Prize Money: \$100, \$70, \$50, \$35, \$25, \$20

If there are fewer than six entries in either divided section, they must be combined. *=Handy

400, 401*, 402, 403 Small Junior Hunter 14 & U o/f*
404 Small Junior Hunter 14 & U u/s

410, 411*, 412, 413 Small Junior Hunter 15-17 o/f*
414 Small Junior Hunter 15-17 u/s

420, 421*, 422, 423 Large Junior Hunter 14 & U o/f*
424 Large Junior Hunter 14 & U u/s

430, 431*, 432, 433 Large Junior Hunter 15-17 o/f*
434 Large Junior Hunter 15-17 u/s

440, 441*, 442, 443 Junior Hunter 3'3" o/f*
444 Junior Hunter 3'3" u/s

AMATEUR OWNER HUNTER

Entry Fee: \$200 for this section; fences 3'6" or 3'3" (USEF HU107)

Prize Money: \$100, \$70, \$50, \$35, \$25, \$20

If there are fewer than six entries in either divided section, they must be combined. *=Handy

500, 501*, 502, 503 Amateur Owner Hunter 18-35 o/f*
504 Amateur Owner Hunter 18-35 u/s

510, 511*, 512, 513 Amateur Owner Hunter Over 35 o/f*
514 Amateur Owner Hunter Over 35 u/s

520, 521*, 522, 523 Amateur Owner Hunter 3'3" 18-35 o/f
524 Amateur Owner Hunter 3'3" 18-35 u/s

530, 531*, 532, 533 Amateur Owner Hunter 3'3" Over 35 o/f
534 Amateur Owner Hunter 3'3" 36+ u/s



PONY HUNTER

Entry Fee: \$150 for this section; fences 2'3", 2'6" or 3' (USEF HU110)

Prize Money: \$35, \$25, \$15, \$10, \$10, \$5

Open to small ponies 12.2 hands & under, medium ponies 12.2 hands & under 13.2 hands & large ponies over 13.2 hands & under 14.2 hands. *=Handy

Height sections may be combined if there are three (3) or fewer entries in any height section.

600	Small Pony Conformation Hunter o/f*
601*, 602, 603	Small Pony Hunter o/f
604	Small Pony Hunter u/s
610	Medium Pony Conformation Hunter o/f*
611*, 612, 613	Medium Pony Hunter o/f
614	Medium Pony Hunter u/s
620	Large Pony Conformation Hunter o/f*
621*, 622, 623	Large Pony Hunter o/f
624	Large Pony Hunter u/s

ADULT AMATEUR HUNTER

Entry Fee: \$175 section or \$50 per class; fences 3'(USEF HU108)

700, 701, 702, 703	Adult Amateur Hunter 18-35 o/f*
704	Adult Amateur Hunter 18-35 u/s
710, 711, 712, 713	Adult Hunter Over 35 o/f*
714	Adult Hunter Over 35 u/s

CHILDREN'S HUNTER

Entry Fee: \$175 section or \$50 per class; fences 3'(USEF HU111)

720, 721, 722, 723	Children's Hunter 14 & U o/f*
724	Children's Hunter 14 & U u/s
730, 731, 732, 733	Children's Hunter 15-17 o/f*
734	Children's Hunter 15-17 u/s

CHILDREN'S HUNTER PONY

Entry Fee: \$175 section or \$50 per class; fences 2' & 2'6"

740, 741, 742, 743	Children's Pony Hunter o/f
744	Children's Pony Hunter u/s



2'6" ADULT HUNTER

Entry Fee: \$125 section or \$40 per class

750, 751, 752, 753 **2'6" Adult Hunter o/f***

754 **2'6" Adult Hunter u/s**

2'6" CHILDREN'S HUNTER

Entry Fee: \$125 section or \$40 per class

760, 761, 762, 763 **2'6" Children's Hunter o/f***

764 **2'6" Children's Hunter u/s**

* Denotes Wild Card Class & First Class of Division

OPPORTUNITY JUNIOR CROSS RAILS

Entry Fee: \$150 section or \$35 per class

Open to inexperienced horse/rider combinations where the rider is under 18.

801 **Opportunity Junior Cross Rails Hunter o/f**

802 **Opportunity Junior Cross Rails Hunter o/f**

803 **Opportunity Junior Cross Rails Hunter u/s**

804 **Opportunity Junior Cross Rails Medal**

805 **Opportunity Junior Cross Rails Equitation Flat**

OPPORTUNITY ADULT CROSS RAILS

Entry Fee: \$150 section or \$35 per class

Open to inexperienced horse/rider combinations where the rider is 18 years or older.

810 **Opportunity Adult Cross Rails Hunter o/f**

811 **Opportunity Adult Cross Rails Hunter o/f**

812 **Opportunity Adult Cross Rails Hunter u/s**

813 **Opportunity Adult Cross Rails Medal**

814 **Opportunity Adult Cross Rails Equitation Flat**

EQUITATION MEDALS

Entry Fee: \$50 per class

850 **WIHS Hunter Phase**

851 **WIHS Jumper Phase**

853 **USEF Pessoa National Hunter Seat Medal**

854 **Platinum Performance/USEF Show Jumping Talent Search 2***

855 **ASPCA/Maclay**

856 **Maclay Regional Warm Up**

857 **Ariat Adult Medal**

858 **THIS Children's Medal**

859 **US Pony Medal**



REGION 3 ASPCA/NHSAA CHAMPIONSHIP

REGION 3 ASPCA/NHSAA MACLAY CHAMPIONSHIP

Class 875 / Sunday, September 20, 2015

Judges: Chance Arakelian & Kip Rosenthal

Entries and Entry Closing Dates

Entry Fee: \$150 payable to the National Horse Show (see Regional Championships Entry Form)

Entries for Regional Championship classes close, and must be received by 5:00 p.m. Eastern Time, August 15, at the NHSAA's office. Entries must be on the Official Entry Form, signed and submitted with the \$150.00 per class Entry Fee made payable to the NHSAA. Riders who qualify for Regional Championship classes at any time between August 15, 2015 and the final qualifying date of August 31, 2015 shall be required to submit entries by 5:00 p.m. Eastern Time on September 1, 2015, except if that date should fall on a Saturday or Sunday, in which case they must be received no later than 5 p.m. on the following Monday. The NHSAA reserves the right to reject any late or unsigned entries or entries not submitted with all entry fees. Entries may not be accepted directly by any Regional Championships competition.

Entry and class lists for Regional Finals shall be provided by the NHSAA to competitions hosting Regional Finals no later than 48 hours preceding the commencement of the class. Stall reservations and all other entry and class fees, including competition and processing fees for other classes which might be held during the same competition, must be provided directly to the competition hosting the Regional Finals.

For more information please contact: Cindy Bozon (859) 608-3709 or go to www.nhs.org and click on ASPCA Maclay.

Class Conditions for Regional Competitions

Only one rider per horse. Open to junior members of the ASPCA/NHSAA who have been certified by the ASPCA/NHSAA as being qualified to compete in the Maclay Regional Championship. A Regional competition must have a minimum of 6 competitors for the class to be held.

The course for each Maclay Regional Championship shall be designed by the Judges and/or with the supervision of a USEF Course Designer who must be selected and/or approved by the National Horse Show Association. The course for each Maclay Regional Championship should be of sufficient difficulty, typifying the Maclay National Championship Finals and thereby reflecting the importance of the class. While the courses must not be identical, they should reflect equal difficulty and challenge.

The course must be 3'6" with or without wings and include at least one change of lead, a combination including an oxer and 1/3 of the obstacles must be oxers. In addition, all courses must include at least three of the following: a) bending line b) narrow jump (6'-8') c) roll-back turn d) end fence e) long approach to a single jump.

A minimum of ten (10) more riders than one-half the number of riders competing in the Regional (not more than twenty-four (24) at a time), if available, are required to show at a walk, trot and canter. In addition, one or more riders, at the judges' sole discretion, may be required to perform any number of USEF tests 1-19. After the under saddle phase, if additional workouts are required, the call-back must be limited to only the best ten (10) riders if available. Riders are to be judged on seat, hands, guidance and control of horse. The under saddle performance of those riders selected to show under saddle shall count 50%.

A rider in any Regional competition must complete the course to be eligible for acceptance to the National Finals. Two refusals will eliminate a rider from Regional competition.

Judging Conditions: Each Maclay Regional Championship shall have two (2) Judges who must be selected and/or approved by the National Horse Show. A Maclay Regional Championship's Judge is not eligible to judge the Maclay National Championship Final in the same year.

The Judges will select a Champion, Reserve Champion, and Third through Tenth places at each Maclay Regional Championship. Judges will also determine a stand-by list of the additional entrants in order of placing. The list will be announced publicly, made available to all competitors at the conclusion of the Regional Final, and sent to the National Horse Show Association office.

Judges cards will be sealed immediately upon selection by judges of the Maclay National Finalists and, along with a detailed copy of the course diagram, will be turned over to the official representative of the



REGION 3 ASPCA/NHSAA CHAMPIONSHIP

National Horse Show Association in attendance, or mailed directly to the National Horse Show Association office.

Conditions Governing Regional Final Competition

Riders must compete in either the Regional Finals of their own official USEF residence, the official USEF residence of their trainer or choose another unrelated region. Riders competing in the Regional Finals of their resident states must meet the qualifying requirements of their resident state.

Riders competing in the Regional Finals of his or her trainer's resident state, must meet the qualifying requirements of whichever is greater - the rider's resident state or that of the trainer.

If a rider enters to compete in another Regional Final other than his or her own or trainers region, they must have obtained the highest number of points required in the state within the chosen region or their own region, whichever is greater. Example: If a rider from Florida, which requires 38 points, chooses to compete in the Regional Finals in Region 1 "Northeast" (CT,MA,ME,NH,RI,VT), he or she would have to have obtained 50 points which is the requirement of the state (CT) within the chosen region.

In case of a permanent residence in any non-USEF zone area, such as Canada and Puerto Rico, a rider may choose to compete in any Regional Finals so long as he or she meets the minimum qualifying requirement of 13 points.

The qualifying period for each year's Regional Championship ends August 31. If a horse show starts before August 31, Maclay points acquired at that show will count towards the current year. Riders who have won the required number of qualifying points for their declared region in any one qualifying period may continue to compete until they acquire 60 points.

A rider may continue to accumulate points until June 1. After that date, once you have 60 points, if you continue to accumulate points in a Maclay class held at a show that begins after June 1, you will be ineligible to compete at the Maclay Regionals.

Notification Deadlines and Change of Region.

Each rider wishing to compete in a different region than their home region must notify and declare to the National Horse Show by July 30. Each rider must notify and declare to the National Horse Show by July 30, 2015 in writing on the form provided to competitors (forms may be downloaded from NHS.org website) of his or her intention to compete in the Regional Championships, and in which Regional Championships, whether or not they are yet qualified, in compliance with the conditions expressed above regarding residences. Forms must be received by the National Horse Show Association no later than 5 p.m. Eastern Time on July 30, except if that date should fall on a Saturday or Sunday, in which case they must be received no later than 5 p.m. on the Monday following July 30. Absent compelling circumstances, no changes can be made to the declared Regional Championships after this deadline. Should a rider or trainer claim such compelling circumstances, such a claim must be made in writing to the National horse Show Association prior to 5p.m. Eastern Time on August 10, regardless of its day of the week.

A panel of 3 individuals shall be selected to decide any such claim, drawn by lot: one member from the Executive Committee of the National Horse Show Association, one member from the Executive Committee of the USEF, and one member from the USHJA Hunter Seat Equitation Task Force. Any panel member drawn by lot who shall have a conflict of interest shall recuse himself or herself. Any two members of the three member panel drawn by lot shall have the authority to declare that a member has such a conflict of interest, and shall cause another name to be drawn from the committee of the conflicted member. Such panel shall publish its decision, which shall be final, no later than 5:00 p.m. Eastern Time on the fifth business day following August 10.

Under no circumstances whatsoever may a rider change or request to change their Region for Regional Championships after August 10.



JUMPER

JUMPER SECTIONS

Entry Fee: \$50 per class - Table II = Ribbons for all clear rounds.

900, 901, 902	Jacksonville Jumper / 0.60M Table II
905, 906, 907	Jaguar Jumper / 0.65M Table II
910, 911, 912	Atlantic Jumper / 0.75M Table II
915, 916, 917	Florida Jumper / 0.85M Table II
920, 921	Sunshine Jumper / 0.95M Table II
925, 926, 927	Lala Land Jumper / 1.0M Table II
930, 931, 932, 933	Intracoastal Jumper / 1.10M Table II
935	Beach Jumper / 1.30M Table II

LOW CHILDREN'S/ADULT JUMPER

Fence height 3'3" (1.00m) to 3'6" (1.10m), with spreads 3'6" to 4' (1.10m to 1.20m) speed 382 yds/m. Horses/ponies must be declared no later than 5pm the day before the class is to be held. See Zone 4 specifications. See page 11 for Classic's.

Entry Fee: \$50 per class

950	Low Children's Jumper II.2(b)*
951	Low Children's Jumper II.2(b)
952	Low Children's Jumper II.2.1
955	Low Adult Jumper II.2(b)*
956	Low Adult Jumper II.2(b)
957	Low Adult Jumper II.2.1

HIGH CHILDREN'S/ADULT JUMPER

Fence height 3'6" (1.10m) to 3'9" (1.15m), with spreads 3'9" to 4'3" (1.15m to 1.30m) speed 382 yds/m. Horses/ponies must be declared no later than 5pm the day before the class is to be held. See Zone 4 specifications. See page 11 for Classic's

Entry Fee: \$50 per class

960	High Children's Jumper II.2(b)*
961	High Children's Jumper II.2(b)
962	High Children's Jumper II.2.1
965	High Adult Jumper II.2(b)*
966	High Adult Jumper II.2(b)
967	High Adult Jumper II.2.1



JUMPER AND USHJA HUNTER DERBY

JUNIOR/AMATEUR-OWNER JUMPER

Nomination Fee: \$175 / Entry Fee: \$50 See page 11 for Classic's.

Prize Money: \$150, \$100, \$75, \$65, \$60, \$50, R, R

970	1.20M Low Junior Jumper II.2(b)*
971	1.20M Low Junior Jumper II.2(b)
972	1.20M Low Junior Jumper II.2.1
975	1.20M Low Amateur Owner Jumper II.2(b)*
976	1.20M Low Amateur Owner Jumper II.2(b)
977	1.20M Low Amateur Owner Jumper II.2.1
980	1.30M High Junior Jumper II.2(b)
981	1.30M High Junior Jumper II.2(b)
982	1.30M High Junior Jumper II.2.1
985	1.30M High Amateur Owner Jumper II.2(b)
986	1.30M High Amateur Owner Jumper II.2(b)
987	1.30M High Amateur Owner Jumper II.2.1

JUMPER CLASSICS \$5,000

Entry Fee: \$225 Prize Money: \$1500, \$950, \$700, \$490, \$385, \$280, \$245, \$225, \$225

1.30M Table II.2a. Exhibitors must Ride for Ribbons.

Open in horse/rider combinations entered in 1.30m Junior/Amateur Jumper section at this show. Junior & AO Classics may be combined if there are less than 8 entries in either classic.

990	\$5,000 Geddaway Farm High Junior Jumper Classic Table II.2(a) (1.30m)
991	\$5,000 Reid & Associates Equine Clinic High AO Jumper Classic Table II.2(a) (1.30m)

\$2,500 USHJA NATIONAL HUNTER DERBY

Entry Fee: \$250 (\$25 USHJA Fee Included in the Entry Fee)

Prize Money: \$750, \$550, \$325, \$200, \$150, \$125, \$100, \$75, \$75, \$50, \$50, \$50

See ushja.org for current class specifications. Formal attire required. Class will not be held if less than 10 entries have declared participation in the Horse Show Office by 4:00 pm on Friday, September 18th.

995	\$2,500 USHJA National Hunter Derby
-----	-------------------------------------

PARENT LEADLINE

Class 999 / No Entry Fee

Open to parents of junior exhibitors. Junior exhibitor will lead parent on horseback. Parent must wear approved helmet and suitable shoes. Creativity is encouraged.



2015 ZONE 4 SPECIFICATIONS

(AL, FL, GA, MS, SC, TN) Contiguous states are: AR, KY, LA, MO, NC, VA) in accordance with GR 1111.4:

ADULT AMATEUR HUNTER

Eligibility: To be ridden by exhibitors who have reached their 18th birthday by December 1 of the current competition year and who hold a current USEF Amateur certification. Open to horses and ponies.

Cross Entry: Riders in this section may enter any Equitation class and any class where otherwise eligible. Riders who compete in the Amateur Owner Hunter and/or Jumper classes may show other horses that they own in the Adult Amateur Hunters. Horses and ponies exhibiting in this section may cross enter multiple sections of Adult Amateur Hunter and any classes where eligible.

Judging: To be judged on performance and soundness, suitability to count.

Height of Fences: 3' with spreads not to exceed height of fence.

Combining/Dividing Sections: The Adult Amateur and Children's Hunter sections may be combined if there are less than three total in Children's Hunter section and if there are less than three total in the Adult Amateur section. When sections are combined and there are more than 16 total entries, the sections must be divided utilizing a Floating split, or a California split to create an even division of entries. If there are fewer than three (3) entries in a section, that section must be combined with another.

Jog: Horses and Ponies are not required to jog for soundness. If stated in the prize list, management may require horses to be present for the awards presentation.

Awards: Zone Horse of the Year Awards will be presented annually to the Adult Amateur Hunter 18-35 section, the Adult Amateur 36-49 section and the Adult Amateur 50 & Over section.

CHILDREN'S HUNTER HORSE

Eligibility: To be ridden by exhibitors who have not reached their 18th birthday by December 1 of the current competition year.

Cross Entry: Riders in this section may enter any Equitation class and may compete one different horse in the Junior 3'3" Hunter section, but may not cross-enter into any Junior 3'6" Hunter or Junior Jumper class at the same show. Horses and ponies exhibiting in this section may cross enter multiple sections of Children's Hunter and any classes where eligible.

Judging: To be judged on performance and soundness, suitability to count.

Height of Fences: 3'0" with spreads not to exceed height of fence.

Combining/Dividing Sections: The Children's Hunter section may be divided by age of rider or height of fences. If there are fewer than three (3) entries in either age section, the two sections must be combined. The Children's Hunter section may be combined with the Children's Hunter Pony, Children's Hunter Horse and/or Adult Amateur sections when there are fewer than three (3) entries in either section. When sections are combined and there are more than 16 total entries, the sections must be divided utilizing a Floating split, or a California split to create an even division of entries.

Jog: Horses are not required to jog for soundness.

Awards: Zone Horse of the Year Awards will be presented annually to the Children's Hunter 14 & Under section and to the Children's Hunter 15 - 17 section.

CHILDREN'S HUNTER PONY

Eligibility: To be ridden by exhibitors who have not reached their 18th birthday by December 1 of the current competition year.

Cross Entry: Rider age restrictions as found in Regular Pony sections do not apply. Riders may show only one pony in either the 2' or the 2'6" height of the Children's Hunter Pony section when also competing in the Regular Small, Medium or Large Pony and/or Green Pony Hunter sections. Riders cannot cross enter into any class where fences exceed 3'3". (Exception: Riders may show in Pony Jumpers). Ponies exhibiting in Children's Hunter Pony may cross enter into any class where otherwise eligible but the rider may not show the same pony in the regular pony section.

Judging: To be judged on performance and soundness, suitability to count.

Height of Fences: Small/Medium Children's Hunter Ponies: 2' and Large Children's Hunter Ponies 2'6".

Combining/Dividing Sections: The section may be divided at management's discretion. The Children's Pony Hunter section must be offered by size of pony Small/Medium and Large Pony. If there are fewer than three (3) entries in either height section, the two sections must be combined. The Children's Hunter Pony section may be combined with

the Adult Amateur and Children's Hunter sections if there are fewer than three (3) total entries in the Children's Hunter and Adult Amateur sections. When sections are combined and there are more than 16 total entries, the sections must be divided utilizing a Floating split, or a California split to create an even division of entries.

Jog: Horses are not required to be jogged for soundness.

Awards: Zone Horse of the Year Awards will be presented annually to the Children's Hunter Pony Small/Medium section and to the Children's Hunter Pony Large section.

LOW CHILDREN'S JUMPER

Eligibility: To be ridden by exhibitors who have not reached their 18th birthday by December 1 of the current competition year. Open to horses and ponies.

Cross Entry: Horse/Rider combinations in Low Children's Jumper may not cross enter into any classes held above 1.15m (3'9") at the same show. Competition Management may restrict cross entries between High and Low sections at the same competition if stated in the prize list. Horse/rider combinations may enter only one classic, if both Low and High are offered.

Combining/Dividing Sections: Children's sections may be divided by or combined with Adult Amateur Jumper sections, at management's discretion, if so stated in the prize list.

Height of Fences: 1.00m (3'3") to 1.05m (3'5").

Awards: Zone awards to be given for Low Children's Jumper section.

LOW ADULT AMATEUR JUMPER

Eligibility: To be shown by riders who have reached their 18th birthday by December 1 of the current competition year and who hold a current USEF Amateur certification. Open to horses and ponies.

Cross Entry: Horse/Rider combinations in Low Adult Amateur Jumper may not cross enter into any classes held above 1.15m (3'9") at the same show. Competition Management may restrict cross entries between High and Low sections at the same competition if stated in the prize list. Horse/rider combinations may enter only one classic, if both Low and High are offered.

Combining/Dividing Sections: Children's sections may be divided by or combined with Adult Amateur Jumper sections, at management's discretion, if so stated in the prize list.

Height of Fences: 1.00m (3'3") to 1.05m (3'5").

Awards: Zone awards to be given for Low Adult Amateur Jumper section.

HIGH CHILDREN'S JUMPER

Eligibility: To be ridden by exhibitors who have not reached their 18th birthday by December 1 of the current competition year. Open to horses and ponies.

Cross Entry: Horse/rider combinations are not permitted to cross enter into Junior Jumper classes or any class at 1.20m (3'11") and above, that offers prize money, at the same competition. Competition Management may restrict cross entries between High and Low sections at the same competition if stated in the prize list. Horse/rider combinations may enter only one classic, if both Low and High are offered.

Combining/Dividing Sections: Children's sections may be divided by or combined with Adult Amateur Jumper sections, at management's discretion, if so stated in the prize list.

Height of Fences: 3'6" or 1.10m (3'7") to 1.15m (3'9").

Awards: Zone awards to be given for High Children's Jumper section

HIGH ADULT AMATEUR JUMPER

Eligibility: To be ridden by exhibitors who have reached their 18th birthday by December 1 of the current competition year and who hold a current USEF Amateur certification. Open to horses and ponies.

Cross Entry: Horse/rider combinations are not permitted to cross enter into Amateur Owner Jumper classes or any class at 1.20m (3'11") and above, that offers prize money, at the same competition. Competition Management may restrict cross entries between High and Low sections at the same competition if stated in the prize list. Horse/rider combinations may enter only one classic, if both Low and High are offered.

Combining/Dividing Sections: Children's sections may be divided by or combined with Adult Amateur Jumper sections, at management's discretion, if so stated in the prize list.

Height of Fences: 1.10m or 3'6" to 1.15m (3'9").

Awards: Zone awards to be given for High Adult Amateur Jumper section.



GGT Footing
Wishes All
Competitors
Good Luck!!



www.ggt-footing.com

GENERAL RULES & REGULATIONS

1. USEF

Every class offered herein which is covered by the rules and specification of the current USEF Rule Book and will be conducted and judged in accordance therewith. The rated sections of these Competitions are official USEF point competitions for USEF National and USEF / USHJA Zone Horse of the Year Awards.

LIFE, SENIOR ACTIVE AND JUNIOR ACTIVE MEMBERS SHALL BE ELIGIBLE TO PARTICIPATE IN ALL CLASSES AT REGULAR COMPETITIONS, EVENTING COMPETITIONS AT THE PRELIMINARY LEVEL OR ABOVE AND COMBINED DRIVING COMPETITIONS AT THE ADVANCED LEVEL, DRESSAGE, REINING AND VAULTING COMPETITIONS AND ENDURANCE RIDES. A NONMEMBER MAY PARTICIPATE AS A HANDLER, RIDER, DRIVER, OWNER, LESSEE, AGENT, COACH OR TRAINER AT REGULAR COMPETITIONS, EVENTING COMPETITIONS, DRESSAGE COMPETITIONS, REINING COMPETITIONS AND COMBINED DRIVING COMPETITIONS UPON PAYMENT OF A \$30 SHOW PASS FEE. PARTICIPANTS IN THE FOLLOWING CLASSES ARE EXEMPTED FROM THE REQUIREMENTS OF THIS RULE: 1) LEADLINE; 2) EXHIBITIONS; 3) GAMES AND RACES; 4) CLASSES FOR 4-H MEMBERS; 5) WALK TROT AND ACADEMY CLASSES (ACADEMY CLASSES ARE CLASSES LIMITED TO HORSES USED REGULARLY IN A LESSON PROGRAM); 6) USDF INTRODUCTORY LEVEL TESTS, PAS DE DEUX AND QUADRILLE CLASSES; 7) NRHA ENDORSED REINING COMPETITIONS. 8) OPPORTUNITY CLASSES, 9) CITIZENS OF OTHER NATIONS WHO HAVE PROOF, IN ENGLISH, OF CURRENT MEMBERSHIP IN GOOD STANDING OF THEIR OWN NATIONAL FEDERATION, 10) USEA BEGINNER NOVICE DIVISION; AND 11) ASSISTANT HANDLERS IN DRESSAGE SPORT HORSE BREEDING CLASSES
FEDERATION ENTRY AGREEMENT

By entering a Federation-licensed Competition and signing this entry blank as the Owner, Lessee, Trainer, Manager, Agent, Coach, Driver, Rider, Handler, Vaultor or Longeur and on behalf of myself and my principals, representatives, employees and agents, I agree that I am subject to the Bylaws and Rules of The United States Equestrian Federation, Inc. (the "Federation") and the local rules of the competition.

I agree to be bound by the Bylaws and Rules of the Federation and of the competition. I will accept as final the decision of the Hearing Committee on any question arising under the Rules, and agree to release and hold harmless the competition, the Federation, their officials, directors and employees for any action taken under the Rules.

I represent that I am eligible to enter and/or participate under the Rules, and every horse I am entering is eligible as entered. I also agree that as a condition of and in consideration of acceptance of entry, the Federation and/or the Competition may use or assign photographs, videos, audios, cablecasts, broadcasts, internet, film, new media or other likenesses of me and my horse taken during the course of the competition for the promotion, coverage or benefit of the competition, sport, or the Federation. Those likenesses shall not be used to advertise a product and they may not be used in such a way as to jeopardize amateur status. I hereby expressly and irrevocably waive and release any rights in connection with such use, including any claim to compensation, invasion of privacy, right of publicity, or to misappropriation.

The construction and application of Federation rules are governed by the laws of the State of New York, and any action instituted against the Federation must be filed in New York State. See GR908.4.

2. Closing Dates:

- a) Jumper nomination fees, hunter fees, equitation fees, and stabling fees, USEF & USHJA fees will be due **Friday, August 28, 2015**.
- b) SEMF requires that nomination fees, hunter, equitation fees, proessing fee, stabling fee or ship in fee, USEF Drug & Administration fee, USHJA fee accompany each entry blank. Make all checks payable to **Southeast Medal Finals** in United States Funds. Numbers will not be issued without a SIGNED OPEN CHECK or CREDIT CARD on file with the secretary. Entry blanks must be signed by the owner or his authorized agent, trainer, riders, and/or coach. Acknowledgments will not be mailed.

3. Entries and Nominations:

- a) Entries for all hunter and equitation classes close according to the above schedule. Entries will be accepted the day of the class at management's discretion. A post entry charge of \$40 per class or \$125 per hunter section per show will apply.
- b) Nominations for all Jumper Sections and classes close according to the above schedule or as otherwise noted. Post nominations will be accepted after the closing date at the regular nominating fee plus a late charge of \$25 unless otherwise stated.
- c) Declarations to show horses which have been nominated for the Jumper Division must be made during Competition Office hours and received by the Competition Secretary no later than 5:00 p.m. the day before the class is held unless otherwise noted. At managements discretion entries received after 5:00 pm may be accepted and a late fee of \$50 per class will be assessed for all classes other than Grand Prix and Classic declarations.
- d) Late or improper Derby & Classic declarations: Declarations received after the published deadline or declarations improperly completed will be accepted at management's discretion. A penalty of \$75 per class will be assessed without exception. In the event of acceptance of a late declaration where a Starting Order is established, the declared entrant will be placed prior to the #1 position in the Starting Order.
- e) Horses competing in classes that they have not been entered will be required to pay a double entry fee in those classes.
- f) Each entry form must give the USEF/USHJA membership numbers; owner, rider, trainer and horse. A proper mailing address; telephone numbers and either a Social Security Number or Federal ID Number for each prize money recipient must be given.
- g) The owner as listed on the entry form will be responsible for all entry fees, nomination fees, and stabling fees of all horses entered or nominated on the entry form.
- h) A fine of \$100 plus collection fees will be made for all non-negotiable checks. Foreign competitors, please pay in U.S. funds to avoid discount charges.
- i) Office Fees: \$40 per horse.
- j) Stalls may be split per trainer's instructions up to 11am Saturday. After that time all stalls will be paid on trainers Barn Account.
- k) All accounts must be settled by Sunday. Any mistakes at check out must be resolved within 48 hours. Please review your bills carefully. Any account left open at the conclusion of the show will be settled by the Show Office with the payment provided with entry. Those accounts will not be open to dispute of any errors incurred. After accounts have been settled, any



balance under \$10 will be written off.

4. **Scratches:**
 - a) Horses entered in hunter sections, classes or equitation classes must be scratched by written notice (add/scratch i.e) and presented or sent to the Competition Secretary. A Veterinarian Certificate is not required. This written notice must be in the possession of the Secretary one hour prior to the start of the hunter section/ class scratched. When valid notice of a scratch is received, the entry fee will be credited less a \$75 per hunter section/\$25 per class office processing fee. Once a hunter section has started, horses that are not competing in classes in which they are entered will forfeit their fees unless the horse becomes ill or injured prior to the class or classes in which it is entered. In this case, in order to qualify for a credit, a scratch sheet must be filled out and presented to the Secretary. In addition, an Official Veterinarian Certificate must be filled out and signed by the Official Competition Veterinarian, certifying the illness or injury, and presented to the Secretary no later than one hour after the final class of the competition. Entry fees will then be credited less the processing fee of \$75 per horse.
 - b) In all jumper classes in which a declaration to compete is made, once the class has started, the entry fee as stated in the Tampa Prize List will be charged whether the horse is shown or not. In order to scratch a horse from classes declared, an official form (scratch sheet) must be filled out and presented to the Secretary before the start of the class being scratched. Upon timely receipt of the scratch form, the entry fee will be credited.
 - c) \$100 of the nomination fee will be refunded to the owners of horses that have been scratched (scratch sheet) twenty-four hours prior to the start of the competition. If the horse is scratched within 24 hours to the start of the competition, an Official Veterinarian Certificate filled out and signed by the Official Competition Veterinarian and must be presented to the Secretary prior to the conclusion of the last class of the competition in order to obtain this refund. If a horse is scratched after competing in any class at the competition, no refund of the nominating fee will be given.
5. **Hunter Scoring:** The open numerical hunter scoring system may be used at the discretion of Management.
6. **Courtesy Circle:** Management reserves the right to limit the Courtesy Circle in Hunter and Equitation classes.
7. **Hors Concours:** No horses or ponies will be allowed in any jumper, hunter or equitation class 'hors concours' during the competition.
8. **Competition Ring Access:** Horses will not be allowed in the competition rings for schooling before competition hours with the exception of warm-up days. Hand walking of horses may be permitted at management's discretion.
9. **Numbers:** Competitors competing without a number or with an incorrect number may be refused an award at Management's discretion.
10. **Attire:** Please read USEF GR801
 - a) Appropriate dress is required in all classes:
 - b) Formal attire: Jumpers - As required by USEF and FEI rules.
 - c) Formal attire: Hunter - As required by USEF HU127.
 - d) Jumper riders may wear breeches and solid colored polo shirts unless otherwise noted in the prize list.
 - e) Protective Headgear & Dress: GR 801 1. It is the tradition of the competition ring that riders and drivers be correctly attired for the class in question, that attendants be neatly dressed and horses be properly presented. 2. It is compulsory for all persons at Federation licensed hunter, jumper or hunter/jumper competitions when mounted anywhere on the competition grounds, to wear properly fastened protective headgear which meets or exceeds ASTM (American Society for Testing and Materials)/SEI (Safety Equipment Institute) standards for equestrian use and carries the SEI tag. It must be properly fitted with harness secured. It is compulsory for riders in Paso Fino classes, both open and breed restricted including Hunter Hack, where jumping is required and when jumping anywhere on the competition grounds to wear properly fastened protective headgear which meets or exceeds ASTM (American Society for Testing and Materials)/SEI (Safety Equipment Institute) standards for equestrian use and carries the SEI tag. It must be properly fitted with harness secured. A Show Committee must bar riders without protective headgear from entering the ring for classes in which protective headgear is required and may bar any entry or person from entering the ring if not suitably presented to appear before an audience. 3. Except as may otherwise be mandated by local law, all sub-juniors riding in the Paso Fino division, while riding anywhere on the competition grounds, must wear properly fitting protective headgear which meets or exceeds ASTM (American Society for Testing and Materials)/SEI (Safety Equipment Institute) standards for equestrian use and carries the SEI tag. Harness must be secured and properly fitted. Any rider violating this rule at any time must immediately be prohibited from further riding until such headgear is properly in place. For all exhibitors competing in the hunter/jumper or hunter seat equitation section, if a rider's chin strap becomes unfastened, the rider may stop, re-fasten the chin strap and continue his/her round without penalty or elimination. A judge may, but is not required to stop a rider and ask them to refasten a chin strap which has become unfastened, again without penalty to the rider. Members of the Armed Services or the Police may wear the Service Dress Uniform. 4. Any exhibitor may wear protective headgear (ASTM/SEI) and/or a protective safetyvest, specifically designed for use in equestrian sport in any division or class without penalty from the judge. The Federation recommends that the vest meet or surpass the current ASTM standard or be certified by the Safety Equipment Institute. 5. See DC117.6.3 for protective headgear requirement in Combined Driving. 6. See DR120 for protective headgear requirement in Dressage. 7. Except as may otherwise be mandated by local law, the Federation strongly encourages all riders, while riding anywhere on the competition grounds, to wear protective headgear with harness secured which passes or surpasses ASTM (American Society for Testing and Materials)/SEI (Safety Equipment Institute) standards for equestrian use and carries the SEI tag. (Exception hunter, jumper, or hunter/ jumper competitions refer to GR801.2) It is the responsibility of the rider, or the parent or guardian or trainer of the junior exhibitor to see to it that the headgear worn complies with appropriate safety standards for protective headgear intended for equestrian use, and is properly fitted and in good condition, and the Federation, Show Committee, and Licensed Officials are not responsible for checking headgear worn for such compliance. 8. The Federation makes no representation or warranty, express or implied, about any protective headgear, and cautions riders that death or serious injury may result despite wearing such headgear as all equestrian sports involve inherent dangerous risk and as no helmet can protect against all foreseeable injuries. 9. Boots/shoes worn while riding anywhere on the competition grounds must have a distinguishable heel.
11. **Award Ceremonies:** Riders are required to ride for awards in all SEMF, Classic/Grand Prix and other competitions, unless notice of ceremony cancellation has been given. Failure of a rider to be present will result in forfeiture of all prizes & placings won in the class.
12. **Orders of Go:** Produced in accordance with Federation Rules JP 112 and HU156. Riders and trainers who have conflicts due to classes in more than one ring at the same time should see the Starter or Technical Coordinator so that necessary adjustments can be made. At no time will any ring be held up over 3 minutes due to conflicts.



3. **Stabling:**
 - a) All horses may begin arriving according to the following schedule: Stalls are of a permanent 12 x 10 design with doors housed under a permanent roof with ceiling fans.
 - b) Horses and equipment will be admitted to the Jacksonville Equestrian Center between the hours of 8:00 a.m. and 5:00 p.m. Anyone wishing to arrive prior to the above dates or at some other hour must make special arrangements. (941) 744-5465.
 - Stabling at a cost of \$200 per stall.
 - c) A charge of \$25 per competition will be added for each stall reserved after the closing date of entries.
 - d) Unless special arrangements are made with Management, stalls must be vacated no later than 12:00 noon the day following the conclusion of each competition.
 - e) **STALL FEES ARE NOT REFUNDABLE UNDER ANY CIRCUMSTANCES.**
 - f) Horses entered but not stabled at the horse show must use the designating area for day exhibitors. Fee: \$25 per day.
14. **Schooling:** All schooling especially for Derby and Classics shall be held under the inspection of the Steward/Schooling Supervisor in the designated schooling area. Lunging will be permitted in designated areas only.

Ticketed Warm-ups will be scheduled. Tickets may be purchased in Show Office. No refunds for unused tickets.
15. **Courses:** In all jumper classes, courses may consist of any combination of the following: brush, gates, oxers, rails, planks, water, liverpool, ditch, wall and panels. In all hunter classes, fences will simulate fences found in the hunting field such as: brush, wall, in-and-out, oxer, post and rails, gate, alken, bank and panels.
16. **Competition Office Hours:**
 - a) Competition days - Opens one hour before the start of the first class and closes immediately following the last class or 5:00 pm whichever is later.
17. **Prize money:**
 - a) Prize money will be credited to the entry's show account after the results of the class winnings are posted or a check will be mailed to the Prize Money recipient at the address on the entry blank within thirty days after the show, thereby ending the show's responsibility as long as all criteria has been met. Exhibitors must provide a social security number or Federal TIN for the prize money recipient and a completed W-9 form.

If a prize money recipient is not denoted the prize money will automatically go to the owner. Any excess prize money will be mailed to the prize money recipient.
 - b) Prize Money Won by Foreign Competitors: Be advised that the U.S. Internal Revenue Service requires sporting events to withhold 30% of prize money won in the United States. Foreign competitors should apply for a U.S. Social Security number and will be asked to complete form 8283 or complete a W-8 Certificate of Foreign Status form.
 - c) Lost or stolen prize money checks will be reissued only after a 180 day waiting period from the original check date has passed. In the event of unauthorized redeeming of a check, SEMF will provide check copies to exhibitors and will be held harmless from the collection process.
19. **Farrier:** Competitors wishing to use a farrier other than the official competition farrier must present the farriers name to the show office prior to that farriers arrival on grounds.
20. **Feed and Bedding:** Feed and bedding is provided for sale on the grounds of the Jacksonville Equestrian Center. For same day delivery, orders must be placed before 12pm noon. For feed and bedding reservations prior to arrival please call (941) 744-5465/fax (941) 744-0874 or email info@stadiumjumping.com.

Exhibitors may bring their own feed and bedding but please note that **STRAW IS NOT ALLOWED** at the Jacksonville Equestrian Center and a fine of \$50 will be assessed to the horses account if found in use.
21. **Motor Homes & RV's:** Motor homes and camper sites are limited. To ensure camper space please complete the camper reservation form and return with payment of \$150. This includes septic.
22. **Vehicles & Designated Parking:** All trucks, autos, golf carts and other motorized vehicles must be parked in designated areas only. **VIOLATORS WILL BE TOWED AT OWNERS EXPENSE.** To insure the safety of all exhibitors, any motorized vehicles (electric or gasoline) on the competition grounds must be operated by persons with a valid drivers license.

GR1301.7: Minors who do not have a valid driver's license which allows them to operate a motorized vehicle in the state in which they reside will not be permitted to operate a motorized vehicle of any kind, including, but not limited to, golf carts, motorcycles, scooters, or farm utility vehicles, on the competition grounds of licensed competitions. Minors who have a valid temporary license may operate the above described motorized vehicles as long as they are accompanied by an adult with a valid driver's license. The parent(s), legal guardian(s), or individual who signs the entry blank as a parent or guardian of a minor operating a motorized vehicle in violation of this rule are solely responsible for any damages, claims, losses or actions resulting from that operation. Violations of this rule will be cause for sanctions against the parent(s), guardian(s) and/or trainer(s) who are responsible for the child committing the offense. Penalties may include exclusion of the child, parent(s), guardian(s), and/or trainer(s) from the competition grounds for the remainder of the competition and charges being filed against any of the above individuals in accordance with Chapter 6. Wheelchairs and other mobility assistance devices for individuals with disabilities are exempt from this rule.
23. **Dogs:** All dogs must be leashed at all times while on the show grounds. Loose dogs will be picked up and detained until the owner has paid a \$100 fine. For a second offense, the owner may be barred from competing and required to leave the grounds. We find this extreme action necessary in order to protect exhibitors from injury and to protect their financial investment. This rule will be strictly enforced.
24. **Electrical and Fire Regulations:** All electrical installation and connections must meet all state and county codes. Aisles shall be maintained clear for a minimum of 6' wide by 8' high. No obstructions or projections shall be allowed in the aisles. No Class 1 Flammable liquids such as gasoline are allowed inside the buildings. Cooking is not permitted within the stable area. Anyone found in violation shall be subject to dismissal from the grounds and from further participation in the horse show without recourse.
25. **Health Certificates:** Florida regulations require that all equines be covered by official interstate health certificates, issued by a licensed veterinarian, showing that the animals are free from any symptoms of any infectious or communicable disease. The certificate shall include the name of the owner and address, destination in Florida, number of horses examined, the name, registration number(s), if any, tattoo, if any, sex, age, rectal temperature, color, and markings of each animal listed. Health certificates will become void after 30 days from issue. Health certificates must show animals to be negative to an equine infectious anemia test within the past 12 months. Date of test and approved laboratory must be shown on health certificate. Equine Rhinopneumonitis vaccination is not required; however, if any animal is vaccinated, it is ineligible for entry within 21 days of vaccination. Vehicles transporting animals must have certificates showing that it was cleaned and disinfected under veterinary supervision prior to loading. This information can be written on the health certificate.



26. **Medical Waste:** In accordance with the 1989 Federal Waste Tracking Act which restricts the disposal of medical waste, Bio Hazardous Medical Waste Containers will be provided in the stable area. All Exhibitors and their agents are responsible for the proper disposal of this waste.
HJ104.3 - A fine of \$100 will be imposed on any trainer, owner, exhibitor or agent for improper disposal of needles or other sharp disposable instruments.
27. **Liability:**
- a) James Lala, Jacksonville Equestrian Center and the Southeast Medal Finals, their officials, sponsors and employees will not be responsible for any accident or loss which may occur to any exhibitor, spectators, guest, rider, groom, attendant or other employee, animal or equipment at any of the competition.
 - b) FLORIDA SENATE BILL 1658 EQUINE ZERO LIABILITY STATUTE: Warning- Under Florida Law an equine activity sponsor or equine professional is not liable for an injury to, or the death of, a participant in equine activities resulting from the inherent risk of equine activities. Also see Florida Equine Activity Statute - Florida Statutes Title XLV TORTS Chapter 773 Equine Activities
 - c) "All owners and competitors are personally responsible for damages to third persons caused by themselves, their employees, their agents or their horses. They are therefore strongly advised to take out third-party insurance providing full coverage for participation in equestrian events at home and abroad, and to keep the policy up to date."
28. Should any question arise that is not provided for in the rules, the same shall be referred to the competition committee whose decision shall be final. In exceptional circumstances, together with the approval of the Ground Jury the OC reserves the right to modify the schedule in order to clarify any matters or matters arising from an omission or due to unforeseen circumstances. Any such changes must be notified to all competitors and officials as soon as possible and they must be reported to the Secretary General by the Foreign Judge.
29. SEMF & James Lala uphold all USEF rules on the Welfare of the Horse and Abuse, Poling and Whip policies.
- 30: **Ring Sizes and Footing:** All weather footing is installed in competition rings and schooling areas.
Coliseum: 225' x 300'
Ring 2: 190' x 350'
Ring 3: 175' x 300'

HOTELS, DIRECTIONS, ENTRY MAILING

Premium Host Hotel

Fairfield Inn & Suites by Marriott

561 Chaffee Point Blvd, Jacksonville, FL 904-693-4400

Holiday Inn Express Hotel & Suites

537 Chaffee Point Blvd, Jacksonville, FL 904-652-2782

Directions:

From the North: Take 95 South to 295 South 14.5 miles to Interstate 10 West, go 4.8 miles to Cecil Commerce Parkway, exit 350. Turn right off the ramp, go 3.6 miles and turn right on Normandy Blvd. (State Road 228). Go 2.5 miles the Jacksonville Equestrian Center is located on the right.

From the Southwest: Take I-75 North to Gainesville Exit - turn right on SR 24 E/SW Archer Road. Stay on ST 24E to US 301 N/SR200. Turn left on US 301/SR200 to SR228E Normandy Blvd. Turn right on SR228 E/Normandy Blvd. Proceed approximately 18.4 miles. Jacksonville Equestrian Center will be on the left side of the road.

Mail Entries to:

SEMF

c/o 1301 Sixth Ave West Suite 406
Bradenton, FL 34205

941-744-5465 / fax 941-744-0874

susiemorr@aol.com (941) 527-6602

enter online at www.horshowsonline.com

Venue:

Jacksonville Equestrian Center
13611 Normandy Boulevard
Jacksonville, FL 32221
904-573-4895

The horse show is not responsible for lost or stolen packages during the competition. Please check with the show office daily for deliveries.





CAMPER ORDER FORM

Size & Make of Camper or Motor Home _____

Name _____

Phone# _____ Cell Phone#: _____

Address: _____

City: _____ State: _____ Zip: _____

Email address: _____

Arrival Date: _____ Time: _____

Enclosed is my check for \$150 or

Charge to my credit card Visa Mastercard American Express

Card No: _____ exp: _____ code: _____

Name on Card: _____

or Charge to show account if competing: _____

Please mail form Southeast Medal Finals
with entry form to: c/o 1301 Sixth Ave West Suite 406, Bradenton, FL 34205

Mail this form with your entries or call (941) 744-5465 office/ fax (941) 744-0874
email to: info@stadiumjumping.com





FEED ORDER FORM

Place orders before noon on show days
for same day delivery

Stable/Trainer Name _____ Phone# _____

Charge to (show account) : _____

Charge to (show account) : _____

Charge to (show account) : _____

Arrival Date: _____ Time: _____

Shavings _____ (# of bags)

Mixed Hay _____ (# of bales)

Alfalfa Hay _____ (# of bales)

Oats _____ (# of bags)

Pellets _____ (# of bags)

Sweet Feed _____ (# of bags)

Bran _____ (# of bags)

Please mail forms to: Southeast Medal Finals
c/o 1301 Sixth Ave West Suite 406
Bradenton, FL 34205

Mail this form with your entries or call (941) 744-5465 office/ fax (941) 744-0874
or email to info@stadiumjumping.com prior to September 16, 2015.



Smart. Sassy.

Slim.

Specially constructed panels flatten your tummy and put curves in all the right places, so you'll look and feel amazing.

Ovation® is the proud sponsor of The South East Medal Finals in Jacksonville, Florida



www.OvationRiding.com

OVATION
ALWAYS AMAZING

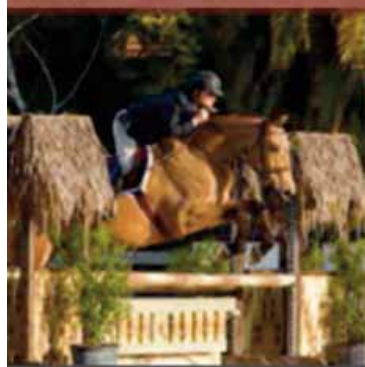




JAMES LALA'S WELLINGTON QUARANTINE, LLC

Wellington Quarantine, LLC, a full service C.E.M. import and an approved export facility located in the "Winter Equestrian Capital of the World," is considered the leader in the industry.

4101 120th Avenue, South * Wellington, FL 33449
(561) 906 6668 * james@jameslalaquarantine.com





4101 120th Ave South
Wellington, FL 33449

FEATURES 4-Day National/Jumper Level 2 USEF-Rated Horse Show

Equitation Finals:

- ASPCA/NHSAA Maclay Region 3 Championship
- The Phelps Media Group Southeast Junior 3' Medal
- Riding Habit Southeast Adult Medal
- GGT Footing Southeast 2'6" Children's Medal
- Ovation Southeast 2'6" Adult Medal
- Southeast Pony Medal

Hunter Finals:

- Tenney's Custom Saddlery Southeast Children's Hunter
- Southeast Adult Hunter
- AG Equestrian Southeast 2'6" Children's Hunter
- Southeast 2'6" Adult Hunter
- C.M. Hadfield's Southeast Junior Hunter
- Southeast Amateur Owner Hunter
- Southeast Pony Hunter

Jumper Finals:

- \$500 Boy-O-Boy Bridleworks Southeast Low Children's Jumper
- \$500 North Run Southeast High Children's Jumper
- \$500 Long Creek Farms Southeast Low Adult Jumper
- \$500 Wellington Quarantine Southeast High Adult Jumper
- \$1,500 Southeast Low Junior Jumper
- \$1,500 Southeast Low Amateur Owner Jumper

Jumper Classics

- \$5,000 Geddaway Farm High Junior Jumper
- \$5,000 Reid & Associates Equine Clinic High Amateur Owner Jumper