

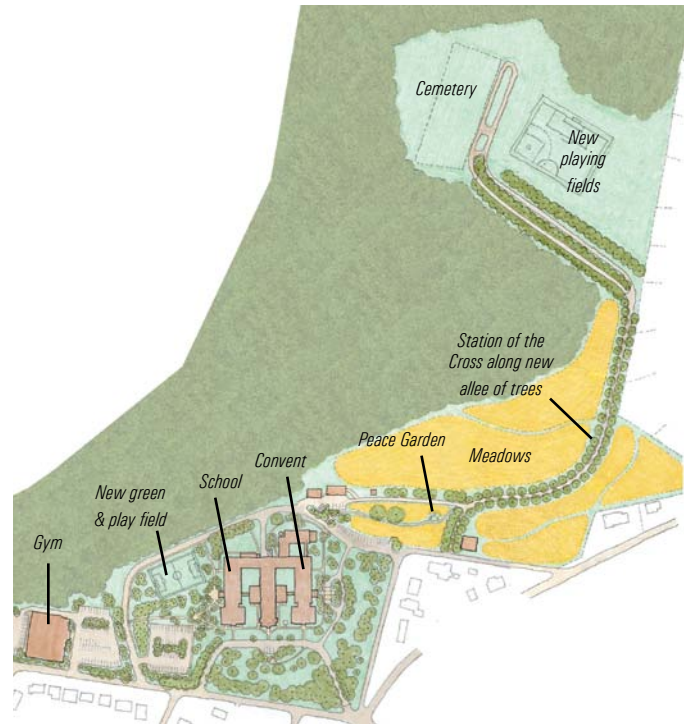
Felician Sisters Convent and School

Location: Corapolis, Pennsylvania *Cost:* \$750,000
Client: Felician Sisters Convent & School *Status:* 2001-2003
Size: 73 acres

The 73-acre site is home to a convent and school, constructed in the 1930s. The building renovation, designed by Perkins Eastman, Architects, requires new handicapped-accessible entrances and clarification of the site's vehicular circulation and parking. The building and site demonstrate sustainable design and received LEED Gold certification.

In developing the Master Plan, the Sisters wanted to explore the contemplative and spiritual aspects of their future site. On the journey to the cemetery, extensive areas of lawn will be converted to meadow, with Stations of the Cross sited along a new allee of trees. New athletic fields and open spaces will be introduced to areas where buildings will be demolished. Landscape courtyards will also provide the School with a performance court and the Convent with a prayer labyrinth and Alzheimer's Court.

In clarifying the site's vehicular circulation and parking needs, areas of asphalt paving will be removed so that the historic character of the Convent landscape can be recaptured and preserved.



Master Plan showing clarified circulation and parking, with new green spaces, play fields & meadows.



Installation of Labyrinth



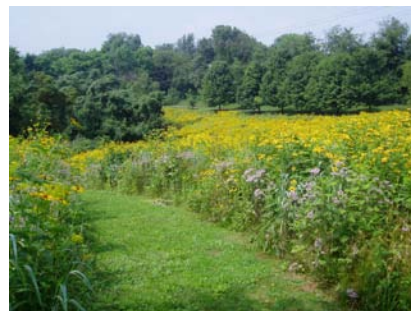
Photo voltaic array



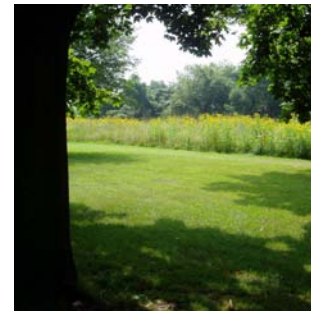
Intimate School & Convent Courtyard Entrances are multipurpose gathering spaces.



St. Francis of Assisi in meadow plantings



Established meadow with mown path



Established meadow edge