

Greening of Greenfield School

Location: Philadelphia, Pennsylvania

Cost: \$400,000

Client: Albert M. Greenfield Home & School Association

Contact: Brett Weber, Co-Chair Greening Greenfield Committee

Status: Construction completed 2010

2400 Chestnut Street
Philadelphia, PA 19103
215.568.9751 Ext. 19

VLS partnered with SMP Architects, Meliora Environmental Design and the Greening of Greenfield Committee to develop a didactic schoolyard for the students, teacher and neighbors of the Greenfield School in Center City Philadelphia. This project is particularly important for the City of Philadelphia because it returns open space to Penn's Green Country Towne, manages small storm events and returns water to the soil mantle. Equally significant, the project transforms the site into a living laboratory that teaches children about micro-climates and other aspects of the natural environment.

VLS used their team building expertise to run charettes with participants like committee members, school children, teachers, parents, the Philadelphia Water Department, Philadelphia Horticultural Society and the Philadelphia School District. The result is a plan that is fully supported by the constituents.

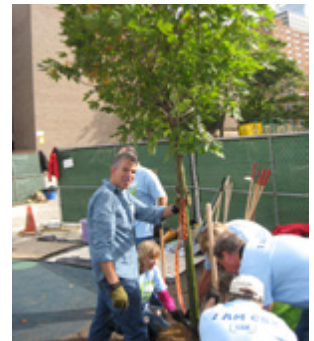
Phase 1 consists of a bioswale with check dams to slow run-off, allow absorption and a lush variety of native plants. The landscape evapotranspires stormwater, provides shade, and creates a mini native Pennsylvania forest ecosystem. Other components of Phase 1 include new climbing play equipment, porous pavers, recycled materials for the check dams and benches, and a gardening area. Phase 2 collects stormwater through a porous rubber play surface with a series of mounds for play. Infiltrated stormwater collects in a planted bed and infiltrates or evapotranspires. Phase 1 was completed September 2009 and Phase 2 was completed during the summer of 2010.



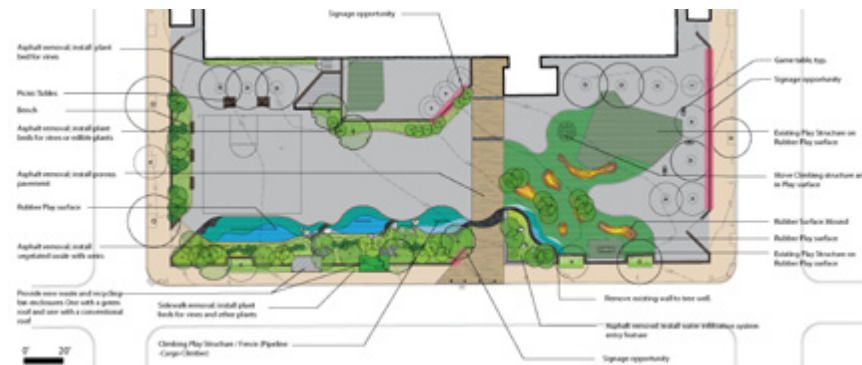
Bioswale



Recycled Bridge Abutments



Volunteer Tree Planting



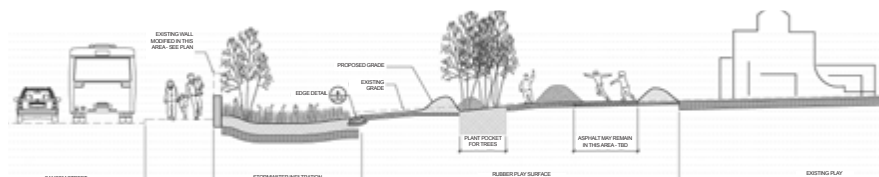
Plan



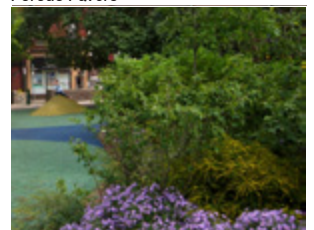
Phase 2 Rubber Surface Mounds and Stormwater Plant Bed.



Porous Pavers



Section through Phase 2 Rubber Surface Mounds and Stormwater Plant Bed.



Garden in early autumn