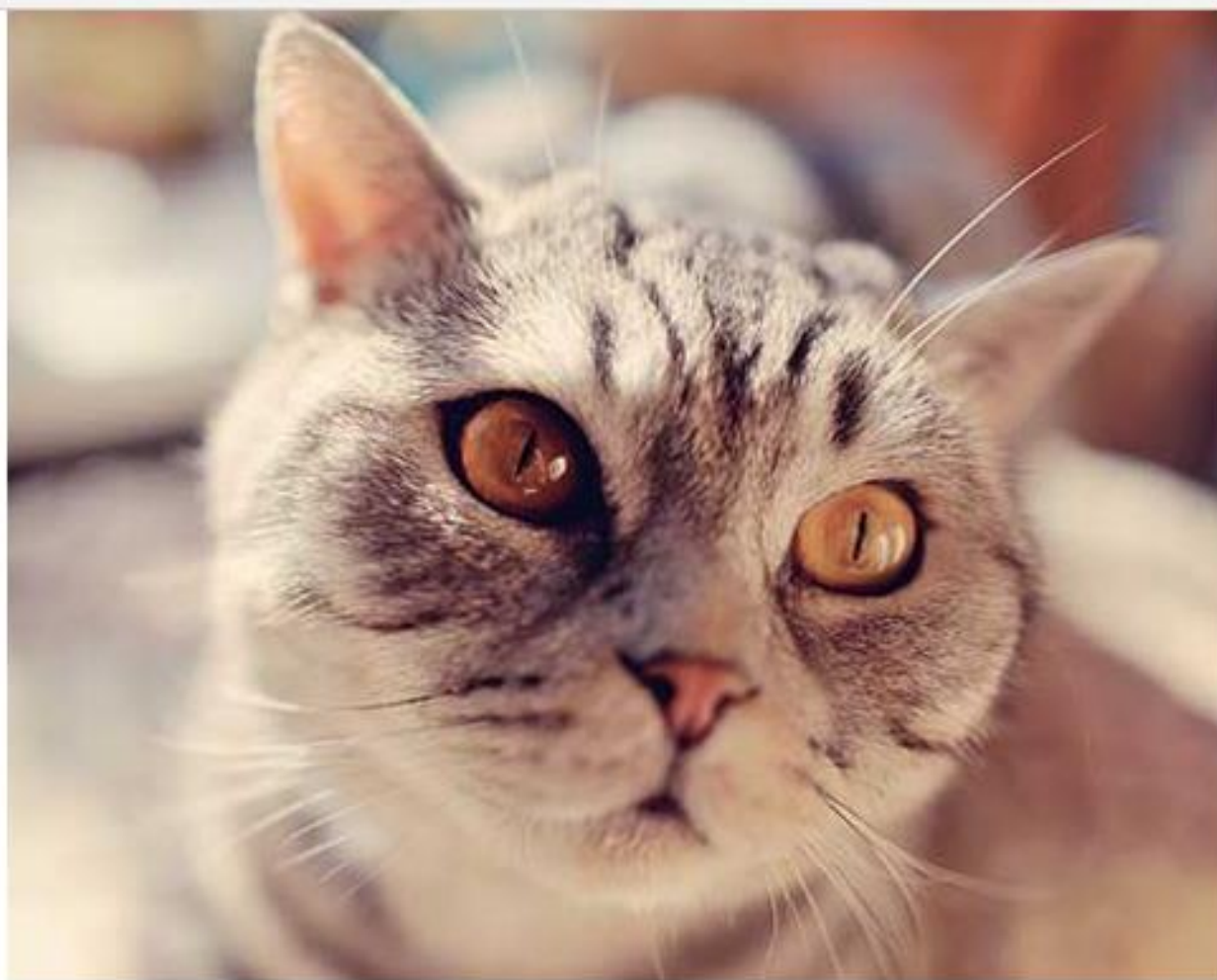


**Where Is
the Cat?**



Where Is the Cat?



This is my **cat**. She's missing!

Can you help me find her?



-Is she in the **kitchen**?

-She's not in the kitchen.



-Is she in the cupboard?

-The cupboard is too small for a cat!

She's not in the cupboard.



-Is she in the bathroom?

-She's not in the bathroom.



-Is she in my bedroom?

-No, she is not in your bedroom.



-Is she in the living room?

-I don't see her in the living room.



-She likes to sit on the armchair in the living room.

Is she on the armchair?

-No, she is not on the armchair.



-Is she in the dining room?

-She is not in the dining room.



-Is she under the table in the dining room?

-She is not under the table in the dining room.



Look, there she is!

She is looking out the window. Silly cat!