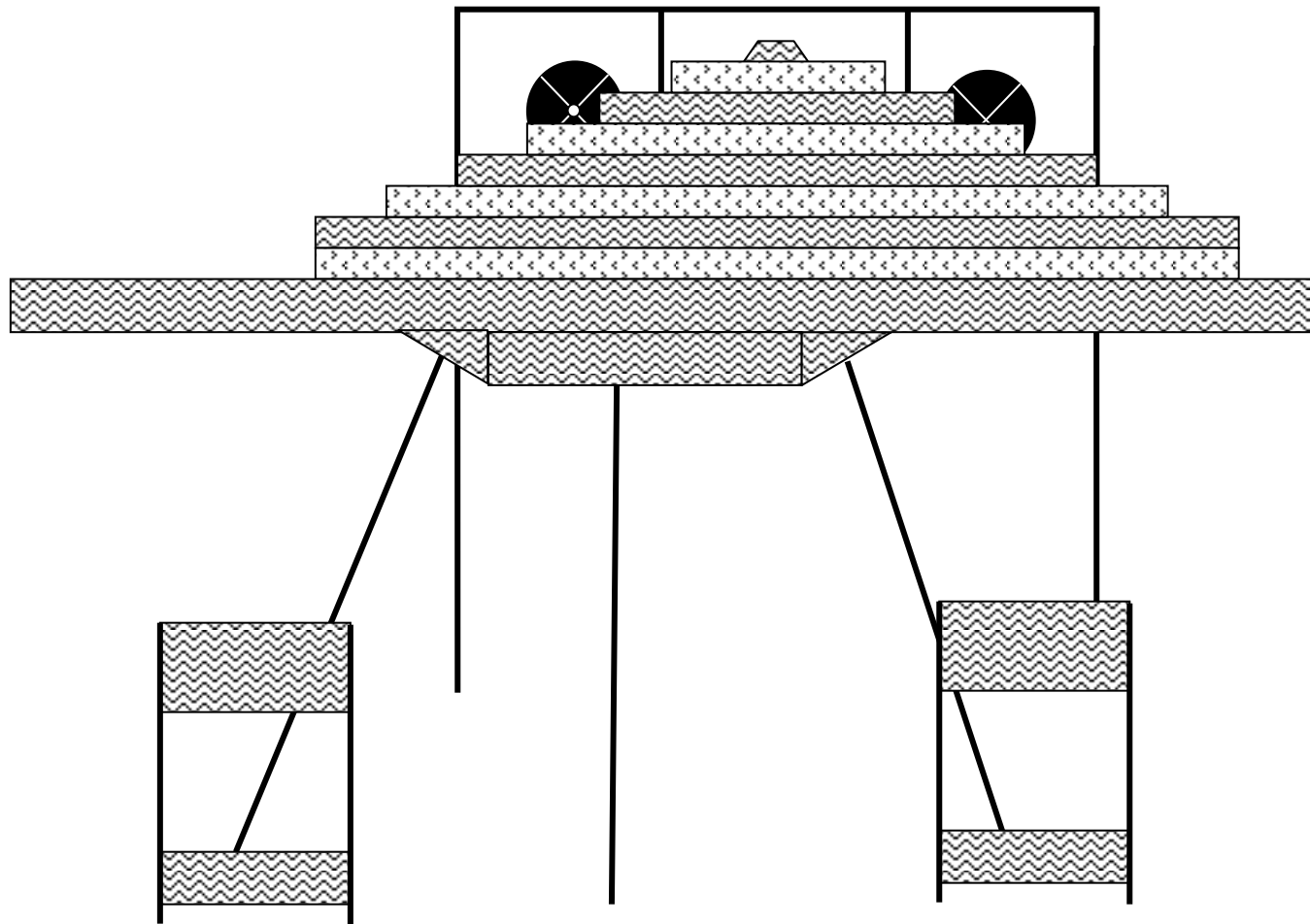


# TABLE SHOOT PLANS

*Paul Griffith & Robin Warner*



**Some tips, which are not visualized in the plans below.**

**When building the pyramid. I used deck screws and started building from the bottom up. Always putting the screws in a position where they would be underneath the 2 x 4 above. It you'll see that the very top piece has some angles cut on it. I actually kind of rounded the top of it. It was not intended to be a rest but more a divider for the rest underneath of it.**

**Also, when cutting the pipe to make your legs. I actually cut the two front pipes at 29 inches in the rear pipe at 27 ½ inches been put pipe The Bottom Your Table Winds up Being a Bit More like 30 Inches Tall.**

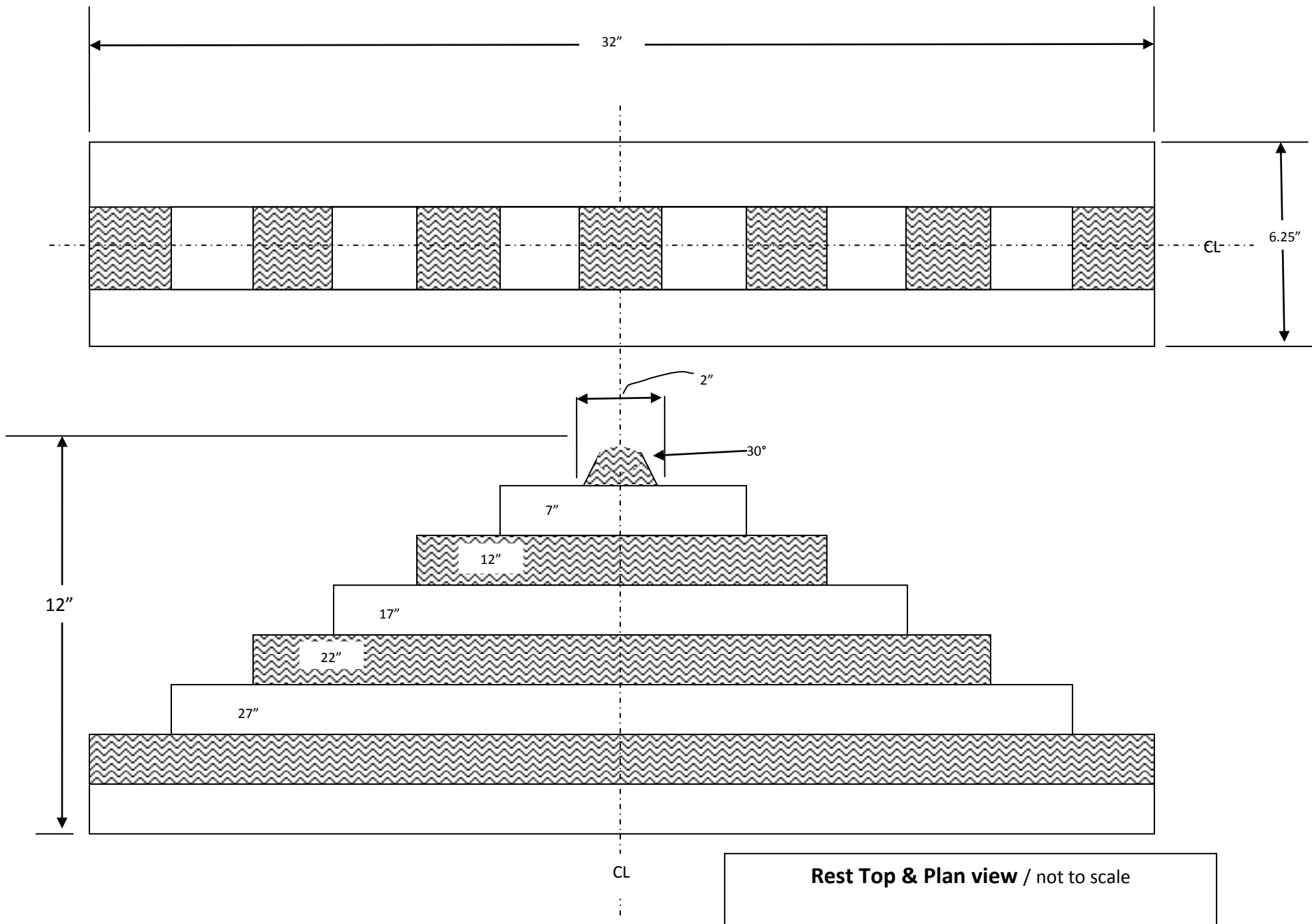
**I used 3/8 3 inch carriage bolts to secure the tee together about an inch and a half bit does well to countersink the head down below the surface of the pyramid can slide freely. I put these in this because I think it will make the table safer to use**

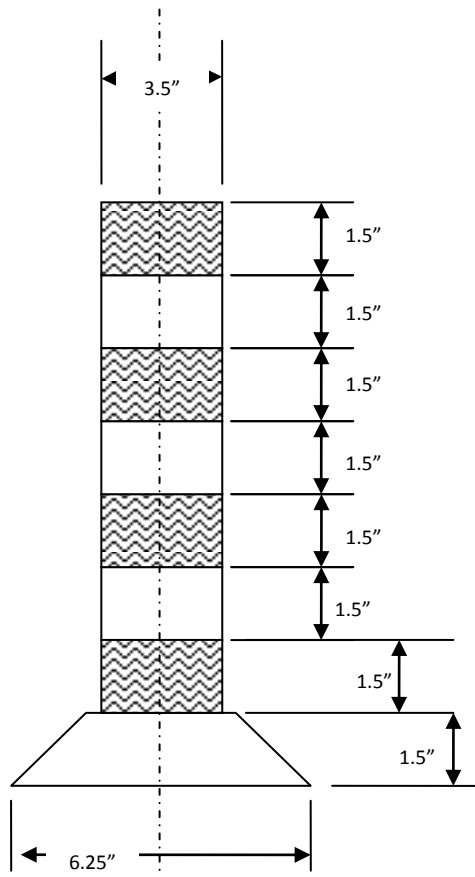
**When installing the wedges to set the angles for the legs. I used deck screws run from the bottom. Be careful not to let them poke through the top your table. Also if you elect, to use flanges. Use long enough lag screws to reach through the flanges in the wedges on into the tabletop. It will fasten him very nicely.**

**I used treated lumber to make the table parts and the bottom of the pyramid. I then used standard treatment for to make the remainder the pyramid we found with our first one that if you make the whole pyramid from treated lumber, it becomes relatively heavy. I have seen some other tables built using non-treated lumber encoded with various protective coatings. I think it's all up to what you personally want to do.**

**One. The table shoots first started, we used 5 gallon buckets with the lids still on them turned upside down as seats. I think the buckets we were using were around 16 or 17 inches tall. Later on, a member of our club donated some 12 x 12 stools that he had built at that same height.**

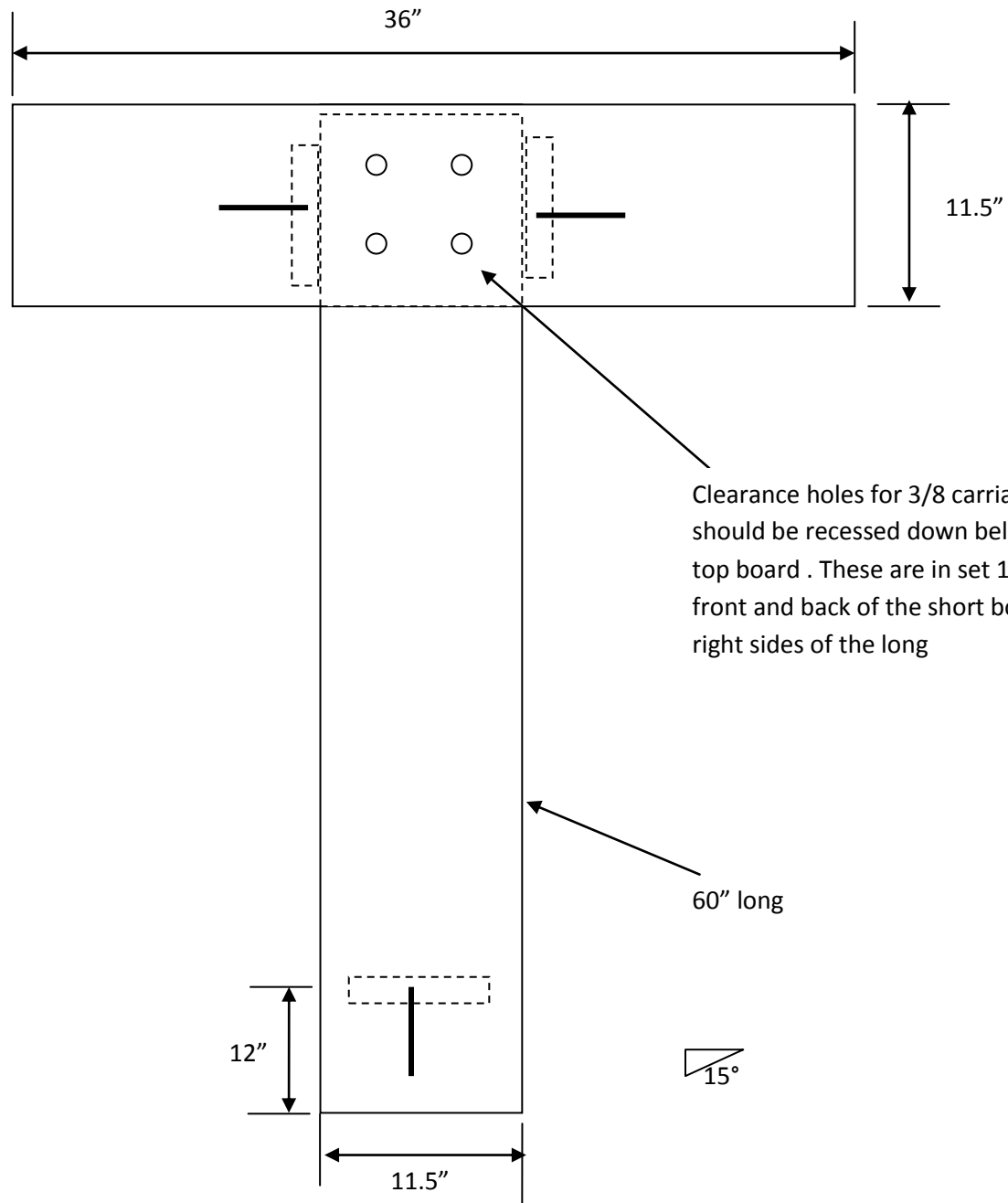
**Please be sure that your table safe and you will have hours and hours of fun, fellowship and good competition.**



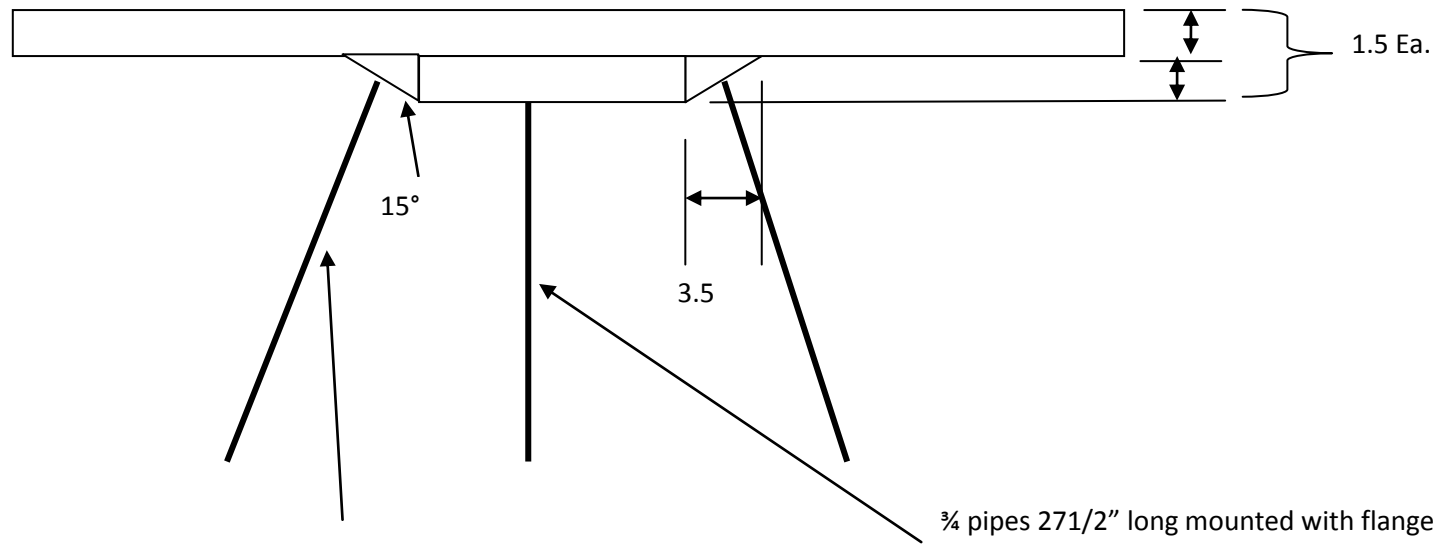


**Rest End View**

Not to scale End

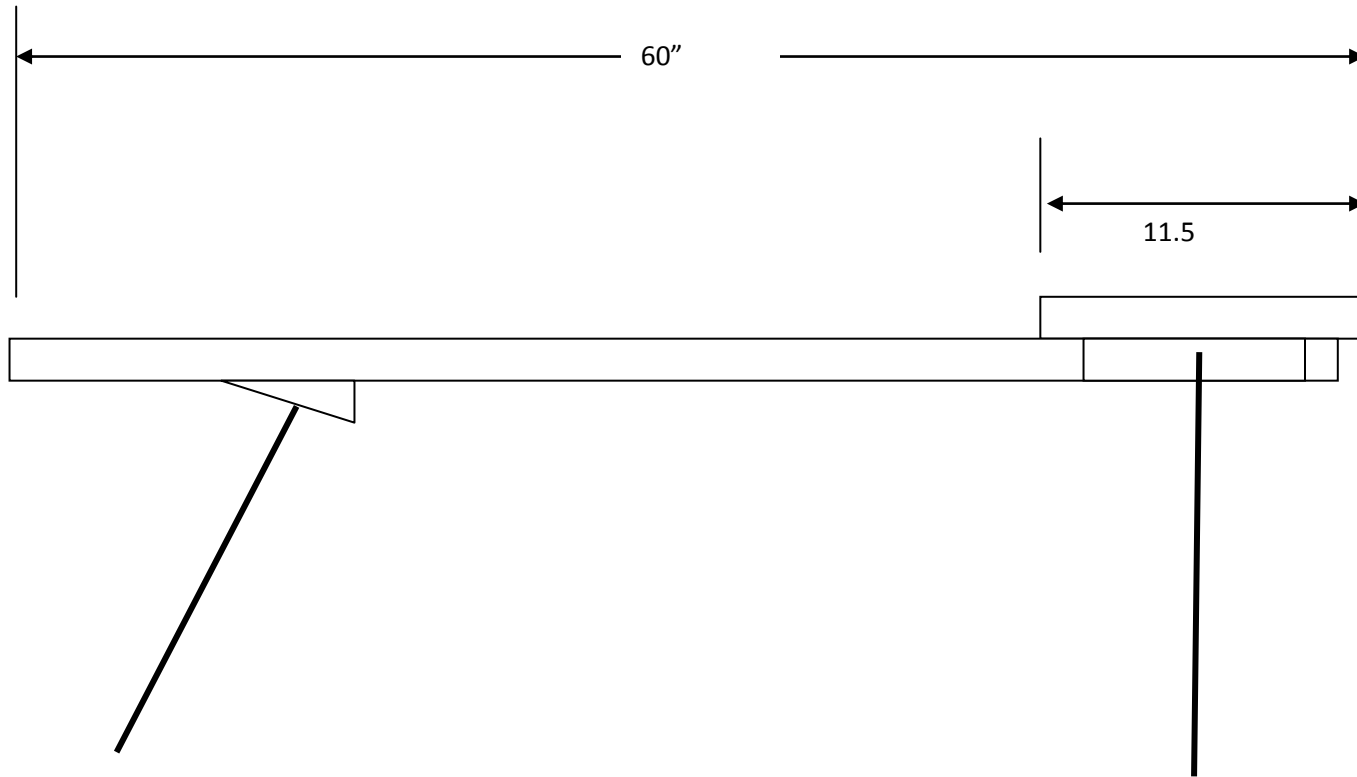


**Table Top View**  
Not to scale



$\frac{3}{4}$  pipes 29" long mounted with flange Typ. Both Front legs

**Table End view**  
Not to scale



**Table side view**  
Not to scale