

LewAllenGalleries

FOR IMMEDIATE RELEASE – April 11, 2016

Henry Jackson: *Continuum*

Exhibition Dates: April 29 – June 5, 2016

Artist Reception: Fri, April 29, 2016, 5 - 7

Gallery Hours: Mon - Fri, 10 - 6;
Sat, 10 - 5; Sunday by appointment

LewAllen Galleries

1613 Paseo de Peralta | Santa Fe, NM 87501

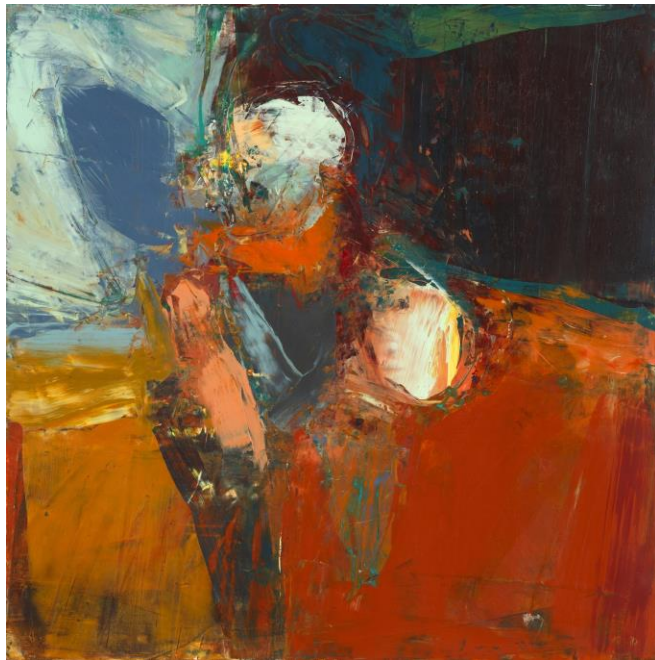
505.988.3250

www.lewallengalleries.com

Press Contact: Thomas Trudeau
ttrudeau@lewallengalleries.com



New Warrior #5, 2016, oil and cold wax on canvas over panel, 48" x 42"



Untitled (#41-16), 2016, oil and cold wax on canvas over panel, 20" x 20"

Santa Fe, NM – With a new body of paintings on view at LewAllen Galleries beginning April 29, Henry Jackson has juxtaposed the expected and the unforeseen into a dynamic tension that infuses serious energy into the work. His process is complexly suggestive of an astute technician – combining wax, solvent, and pigments, then applying them to canvas with tools that force muscular expression – while his mode of creating derives from an imagination teetering between pure spontaneity and adept contemplation.

About this, Jackson says “For the most part I rely on my emotions while working on any piece. My process begins with no preconceived idea. I believe in allowing the work to dictate its own direction and conclusion. I will also rely on the left brain to assist with more academic decisions to move the piece along. I’ve learned that

everything is a shape, whether familiar or otherwise. It’s the ‘other’ that intrigues me.”

The work possess an enticing feeling of completion. Though they fulminate with roiling gestures that contend intensely with areas of ebullient color, there is also a remarkable sense of control, a final unity of facture that offers a gratifying sense of pictorial stasis that is both sustaining to the intellect and nourishing to the soul. With their spirited energy and technical mastery, Jackson’s paintings yield up an elusive but gorgeous equilibrium between release and reserve, let-loose freedom and disciplined process – encomiums of enduring beauty for the eye as well as the mind.

LewAllenGalleries



Ritual #3, 2016, oil and cold wax on canvas over panel, 40" x 38"

The ambiguous relationship in Jackson's compositions between the familiar and the unknown is a kind of metaphor for the artist's aesthetic afflatus rooted deeply in freedom and the spontaneous. It also provides part of the work's intense appeal. In some of his paintings there appear amorphous allusions to the human figure that seem simultaneously vaguely familiar and evocatively mysterious. His influence and relation to the famed Bay Area abstractionist and figurative painters is evident in his work.

A San Francisco native, Jackson studied fine art, design, and psychology at San Francisco State University and the California College of the Arts, Oakland, CA. Jackson's work is part of the permanent collection of numerous private and public institutions.

LewAllenGalleries



Henry Jackson
Untitled (#98-13), 2013
Oil and cold wax on canvas over panel
48 x 50 inches



Henry Jackson
New Warrior #5, 2016
Oil and cold wax on canvas over panel
42 x 48 inches



Henry Jackson
Ritual #3, 2016
Oil and cold wax on canvas over panel
38 x 40 inches



Henry Jackson
Elemental #4, 2016
Oil and cold wax on panel
66 x 48 inches



Henry Jackson
Untitled (#41-16), 2016
Oil and cold wax on canvas over panel
20 x 20 inches



Henry Jackson
Intangible #58, 2016
Oil and cold wax on panel
48 x 58 inches