

# LewAllenGalleries

FOR IMMEDIATE RELEASE – August 9<sup>th</sup>, 2015

## Connie Connally: Place in Time

**Artist Reception:** Friday, August 26<sup>th</sup>, 5 – 7 pm

**Exhibition Dates:** August 26 – October 2, 2016

**Gallery Hours:** Mon - Fri, 10 - 6;  
Sat, 10 – 5

### LewAllen Galleries

1613 Paseo de Peralta | Santa Fe, NM 87501  
505.988.3250

[www.lewallengalleries.com](http://www.lewallengalleries.com)

**Press Contact:** Alex Gill

[agill@lewallengalleries.com](mailto:agill@lewallengalleries.com)



Connally, *Changing Places I*, 2016,  
oil on canvas, 50 x 52 in



Connally, *Meeting Place*, 2016, oil on canvas,  
34 x 34 in

**Santa Fe, NM** - Connie Connally paints beautiful canvases of complex elegance, with imagery that merges harmoniously and nearly completely both representational reference and powerful abstraction.

In *Place In Time*, an enthralling exhibition of new artwork opening August 26<sup>th</sup> through October 2<sup>nd</sup>, 2016, Connally explores sensory worldly experience through kaleidoscopic, expressionist abstraction.

Connally's poetic colorsapes, with their expressive brushwork, sweeping gestural marks, and animated cadence reflect the artist's passion for distilling the essence of her observations of nature and situate her work as the vital interplay between memory and imagination. Her palette of organic color and calligraphic brushstroke combine to serve as imprint of

the artist's profound love of being in nature and the desire that her painting reflect both her exterior and interior experience of it.

Citing Joan Mitchell as an important influence on her work, Connally employs exuberant, impassioned colors laid on her canvases in a pictorial strategy that teeters between the action painting of her abstract expressionist forebears and a more refined personal style that modulates the strokes and dabs that comprise her surfaces. Her layers of brushstroke read less as agitated ruptures and more like intuitive, sensual experiences rendered as prismatic atmospheres of color and tone. Rich, multi-layered surfaces of sun-drenched color morph,

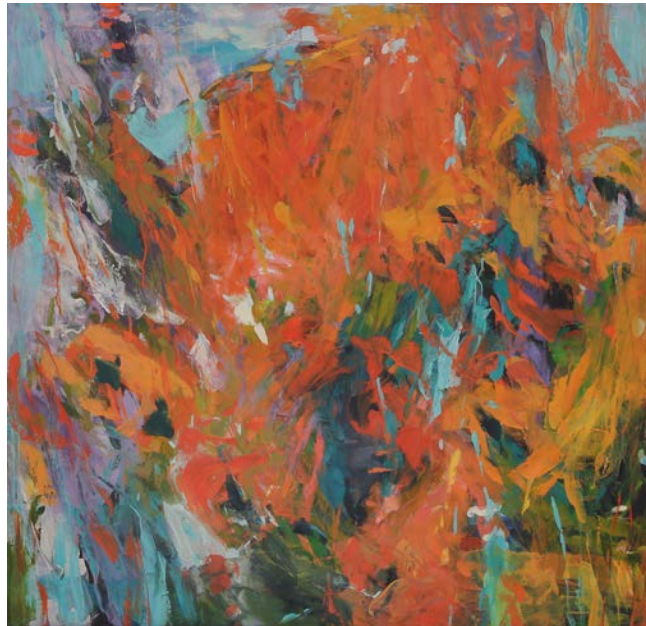
# LewAllenGalleries

coalesce and scatter in quietly energetic rhythms that evoke the experience of being surrounded by the sights and sounds of nature.

Connally continues to find bountiful inspiration in the natural coastlines and verdure of California and the Santa Barbara Mountains that surround her home. She was educated at Wichita State University, later receiving her MFA at Southern Methodist University in Dallas. Her work has been exhibited extensively across the United States and is included in public and private collections.



Connally, *Blowing Through*, 2016,  
oil on canvas, 34 x 34 in



Connally, *Wild Volunteer*, 2016,  
oil on canvas, 50 x 52 in

# LewAllenGalleries



Connally, *Spring Flight*, 2016,  
oil on canvas, 42 x 96 in



Connally, *Time Keeper I*, 2016,  
oil on canvas, 50 x 52 in



Connally, *Water Blue As Air*, 2016,  
oil on canvas, 34 x 34 in