

LewAllenGalleries

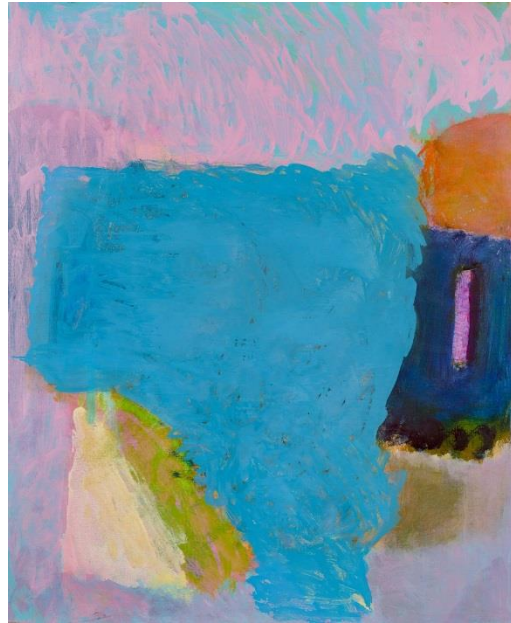
FOR IMMEDIATE RELEASE – May 25, 2016

Emily Mason: *Ripple Effect*

Exhibition Dates: June 10 – July 17, 2016
Reception: Friday, June 10th at 5:30 – 7:30
Gallery Hours: Mon. – Fri., 10 – 6; Sat., 10 – 5

LewAllen Galleries
1613 Paseo de Peralta | Santa Fe, NM 87501
505.988.3250
www.lewallengalleries.com

Press Contact: Alex Gill:
agill@lewallengalleries.com



South of the Border, 2011, oil on canvas, 44" x 36"

Santa Fe, NM – On June 10th, LewAllen Galleries will unveil a collection of Emily Mason's rhapsodies in oil, composed from luscious color orchestrations and graceful brushwork that together mark the confident hand of a masterful artist. Her distinctive brand of color abstraction has earned her a prominent place in the annals of American modernism.



Fully Charged, 2013, oil on canvas, 64" x 52"

Color is the primary means by which Mason's paintings are structured. Its forms and shapes, veils and layers, darts and furls ripple across her canvases and comprise singular argots of painterly sensibility and sensation. Sometimes the colors are assertive and scrappy, bursting with energy as with the vibrant tones of *Fully Charged*, its shades of magenta inspiring a sense of opulent mystery. Other times, as in *Without the Words*, they swoon in a gentle seduction, arrayed across the canvas like a siren song.

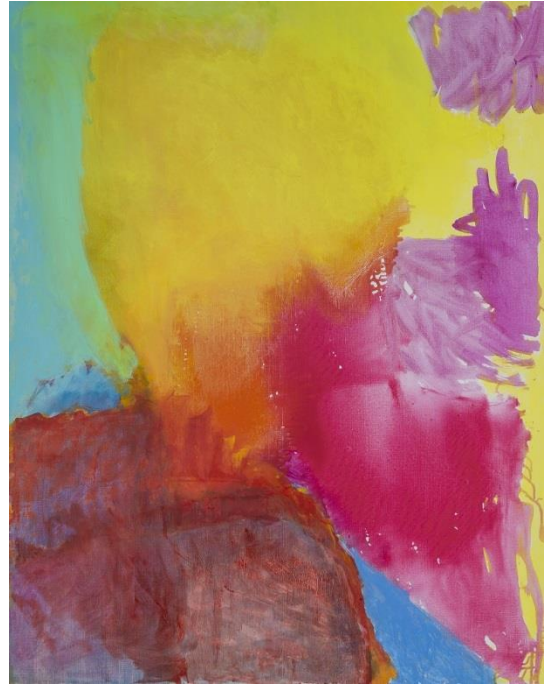
That sense of musicality hovers in Mason's work in harmonies of color, interplay of values and tones, staccato line and bagatelles of brushy expanses, and syncopations between spans and bursts. In

LewAllenGalleries

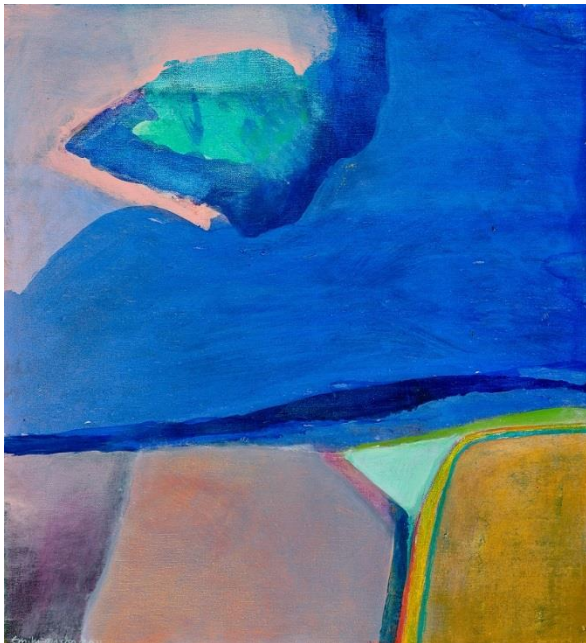
some paintings, passages read like gentle meditations, others suggest exuberant reveries. In all of Mason's painting, however, there is an unmistakable testament to vivid imagination suffused with boundless energy.

Many see in Mason's work subtle evocations of being in nature, the stunning beauty of a vibrant sunset or a lush landscape. These suggestions tempt recognition but resist it as successfully. Clearly Mason immerses herself in the experience of nature, working in its verdant and hilly midst at her New England farm throughout the spring, summer and fall.

Always her compositions grow from a sense of spontaneous intuition. She often begins her paintings on the floor of her studio, working on all sides, reacting to evolving effects as colors interact and forms take shape. Her process typically involves applying paint of varying densities to the canvas with a variety of techniques that include brushing, pouring, and staining.



Eventide, 2014, oil on canvas, 55 3/4 " x 43 3/4 "



Without the Words, 2011, oil on canvas, 26" x 24"

Surprise, however, is the essential vitality -- even ecstasy -- that gives her paintings such emotional power and lasting gratification. There is a bit of magic in her art that can make life a little more enriched by beauty and enlivened by stimulation for eye and mind. Her enchanting orchestrations provide constantly changing roles for colors and spatial expanses that have the power to open the consciousness, finally, to a sense of the sublime.

Today, Emily Mason's work may be thought of as a kind of bridge between the New York School of the 1950s and 1960s and more recent developments in abstract painting. Mason was born in New York City. She studied at Bennington College and graduated from Cooper Union in 1955 and taught painting at Hunter College for more than 30 years. Mason's work has been exhibited internationally and is included in numerous public and private collections.

A digital catalog is available. For more information or more high resolution images, please contact Alex Gill at agill@lewallengalleries.com.

LewAllenGalleries



South of the Border, Emily Mason,
2011, oil on canvas, 44" x 36"



Fully Charged, Emily Mason,
2013, oil on canvas, 64" x 52"



Eventide, Emily Mason
2014, oil on canvas, 55 3/4" x 43 3/4"



Without the Words, Emily Mason
2011, oil on canvas, 26" x 24"



Sea Swept, Emily Mason, 2015, oil on canvas, 14" x 28"