

# LewAllenGalleries

FOR IMMEDIATE RELEASE – March 4, 2016

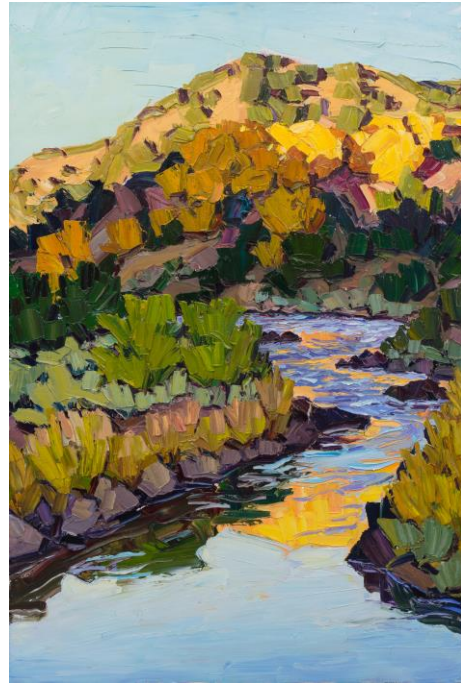
## Jivan Lee: *New Landscape Paintings*

**Exhibition Dates:** March 25 – April 24, 2016  
**Artist Reception:** Fri, March 25, 2016, 5 – 7 PM  
**Gallery Hours:** Mon - Fri, 10 – 6;  
Sat, 10 - 5

**LewAllen Galleries at the Railyard**  
1613 Paseo de Peralta | Santa Fe, NM 87501  
505.988.3250  
[www.lewallengalleries.com](http://www.lewallengalleries.com)

**Press Contact:** Thomas Trudeau  
[ttrudeau@lewallengalleries.com](mailto:ttrudeau@lewallengalleries.com)

**Online and printed catalog will  
accompany the exhibition**



*Rio Grande #1*, 2015, Oil on Linen, 60 x 40 in



*Remnants of a Hurricane*, 2015, Oil on Canvas, 40 x 40 in

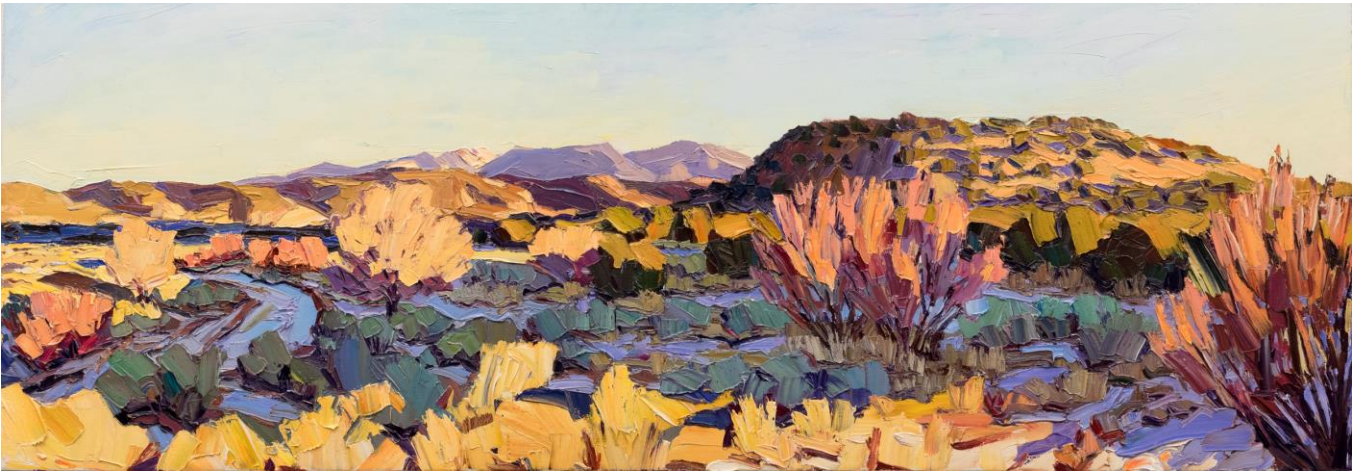
forms, and shapes in nature that Lee believes inspire the senses and can have a profoundly transformative effect. Leavened only by a disciplined consistency of artistic vision, Lee's remarkable oil paintings on canvas resonate his delight in the midst of the land's beauty.

Lee's surfaces are composed with copious amounts of weighty oil paint laid out in patterns of gracefully arching trails and muscular geometric forms producing luminous reverberations rather than literal depictions of the land's majesty. In their opulent textures, his surfaces assume the felt sensation of earth, rock, water, and sky.

**Santa Fe, NM** – At age 31 and with a mind as sharp as the crisp air of the brilliant New Mexico mornings in which he routinely paints, Jivan Lee creates extraordinary scenes of the Land of Enchantment rendered in thick paint and lush color applied with tools of executant power, including spatulas, bare hands and broad brushes. An exhibition of the artist's new landscape paintings opens at LewAllen Galleries on March 25<sup>th</sup> and continues through April 24<sup>th</sup>.

Primarily a plein-air painter, Lee journeys into the New Mexico land and comes out with heavily impastoed tableaus of its landscape that look as though they have been ripped with raw spontaneity from the vistas he sits before to paint each day. His work arises from a sense of joyful engagement with the amalgamation of color,

# LewAllenGalleries



*Sunrise South of Lamy, 2016, Oil on Canvas, 24 x 70 in*

The lustrous lighting effects Lee captures in his works result from the convergence of his keen eye, technical ability and resolute insistence on being present in his chosen locations. These effects stem from the short times in which the sun is positioned to illuminate the land in particular ways that captivate his imagination. This often requires the artist to return to the same spot at the same time, day after day.

Lee's vibrant compositions make it evident they are created at the hand of an artist who revels in his experience of the unique New Mexico landscape. These are not ordinary pictures of mountains and mesas but lively moments of exaltation. It as though nature's majesty has merged with the artist's very being. His paintings become visual celebrations of the land and its ineffable mysteries.

Lee is originally from Woodstock NY, and studied painting at Bard College. His paintings have been exhibited nationally at museums and educational institutions and the subject of reviews and feature articles in publications such as *Fine Art Connoisseur*, *Southwest Art*, *Art Business News*, and *Plein Air Magazine*. In addition to painting as much as time allows, Jivan also helms the Project for Art and the Environment and occasionally teaches.



*El Prado #2 – Sunrise Over Taos Mountain, 2015, Oil on Canvas, 40 x 60 in*