

Pennsylvania State Rabbit Breeders Association 2015 State Convention

**Friday, February 6 -
Sunday, February 8**

**Lebanon Expo Center
80 Rocherty Road, Lebanon, PA 17042**



PLATINUM SPONSORS

**MARTIN'S CAGES
POINTER HILL PET PRODUCTS**

TABLE OF CONTENTS

Front Page.....	1
Contents.....	2
Show Schedule, Show Officials.....	3
PaSRBASponsoredShowSanctionedBreeds.....	4
ShowEntryProcedure, EmergencyContact.....	5
Judges, Wool/Skein Contest.....	6
Awards.....	7
Specialty Show Summary.....	8
Specialty Shows.....	9-15
Show Rules.....	16-17
Issue Resolution.....	18
Vendors.....	19-20
Banquet.....	21
Sponsors.....	22
OpenArts&CraftsContest.....	23
Hotels.....	24-25
Youth Activities.....	26-28
Performance Sports for Rabbits & Cavies.....	28
PaSRBARaffles.....	29
Judges Conference.....	30
Directions/Map.....	31-32
2015 Floor Plan.....	33
AffiliatedClubMeetingRoom.....	33
Cooping.....	34
PaSRBABusinessMeeting, Satin/MiniSatinContest.....	35
ARBA/PaSRBAMembership.....	35
National Specialty Clubs.....	36-42

2015 ARBA National Convention Information October 31 - November 4 Portland, Oregon

2015 SHOW SCHEDULE

Friday

Building open 3-10pm
Entries taken 6-10pm
Cooping available after 3pm

Saturday

Building opens 6am
Entries due by 8am
Show starts at 9am
Open/Youth Rabbit & Cavy
Open Cavy Specialty Show
Rabbit Specialty Shows
Building closes at 6pm
PaSRBA Banquet 7pm

Sunday

Building opens 6am
Entries due by 8am
Show starts at 9am
Open/Youth Rabbit & Cavy
Rabbit Specialty Shows

**OFFICIAL ARBA
SANCTIONED
OPEN AND YOUTH
SHOW**

**ERIC STEWART,
EXECUTIVE
DIRECTOR
PO BOX 5667
BLOOMINGTON,
IL 61702**

PaSRBA Show Officials SHOW SECRETARY

(Open Rabbit) - Lori Jo Whitehaus
open@PaSRBA.org

SHOW SECRETARY

(Youth Rabbit) - Bob Kolb
rlkolb@juno.com

SHOW SECRETARY

(Open Cavy) - Rose White
rosyw15@gmail.com

SHOW SECRETARY

(Youth Cavy) - Becky Kallatch
becky@quiverfarm.com

CONVENTION CHAIR

Brian Bell
908-872-7772
brian.sbfarms@gmail.com

GENERAL SUPERINTENDENT

Ruth-Ann Bell
908-872-7773
ruthann.sbfarms@gmail.com

OPEN SUPERINTENDENT

Tori Perry

YOUTH SUPERINTENDENT

Andrew Stutler

WOOL ROOM SUPERINTENDENT

Ashley Shaw

CAVY SUPERINTENDENT

Peg Hailey (Open & Youth)

SUPERINTENDENT ASSISTANTS:

Lia Schmittle
Peter Tantillo
Matt Bishop

Entry Information

- This is a day of entry show. The show room will be open to take PaSRBA Open, Youth and Cavy entries Friday night from 6pm until 10:00pm.
- PaSRBA Sponsored show entry fee rabbit/cavy \$6 per animal per show. If you enter the same animal in both the Saturday and Sunday show by 8am on Saturday, the reduced entry fee will be \$11 for both days. Fur/wool \$2
- Entries For Sunday will be accepted at 1pm Saturday.
- Friday night entries are highly recommended!

PaSRBA SPONSORED SHOW SANCTIONED BREEDS - 2015

A=Saturday Open, B=Sunday Open, C=Saturday Youth, D=Sunday Youth

American	ABCD	Holland Lop	ABCD
Am.Chinchilla	ABCD	Jersey Wooly	ABCD
Am. Fuzzy Lop	ABCD	Lilac	ABCD
American Sable	ABCD	Lionhead	ABCD
Angora - English	ABCD	Lop – English	ABCD
Angora - French	ABCD	Lop - French	ABCD
Angora - Giant	ABCD	Mini Rex	ABCD
Angora - Satin	ABCD	Mini Lop	ABCD
Belgian Hare	ABCD	Mini Satins	ABCD
Beveren	ABCD	Netherland Dwarf	ABCD
Blanc de Hotot	AB	New Zealand	ABCD
Britannia Petite	ABCD	Palomino	ABCD
Californian	ABCD	Polish	ABCD
Champagne	ABCD	Rex	ABCD
Checkered Giant	AB	Rhinelanders	ABCD
Cinnamon	ABCD	Satin	ABCD
Crème D'Argent	ABCD	Silver	ABCD
Dutch	ABCD	Silver Fox	ABCD
Dwarf Hotot	ABCD	Silver Marten	ABCD
English Spot	ABCD	Standard Chinchilla	ABCD
Flemish Giant	ABCD	Tan	ABCD
Florida White	ABCD	Thriantias	ABCD
Giant Chin	ABCD	Cavies	ABCD
Harlequin	ABCD	Meat Pen	AC**
Havana	ABCD		
Himalayan	ABCD	** see catalog for additional info	

Rabbit Entry Procedure - Open and Youth

- 1) **Completely fill out an entry form**
 - a. Your full name and address. This is how you get your show report.
 - b. The entry form needs Ear number, Breed, Show room variety, Class & Sex for every rabbit entered. Only ARBA Abbreviations are to be used.
 - c. Please make sure it is legible. This is how you get your show reports and Legs.
- 2) **Take it to the respective Open or Youth secretary**
 - a. Sign the book to get an exhibitor number.
 - b. Turn in your entry form with exhibitor number and pay for your entry.
 - c. You will get comment cards to fill out for the show.
- 3) **Fill out a comment card for every rabbit.**
 - a. You MUST fill out a comment card for every rabbit entered!
 - b. You must have all rabbit breed and class info on the cards.
 - c. You must have your name and exhibitor number on every card.
 - d. The writers use the comment cards to check entries at show table.
 - e. The show secretaries use them to double check control sheets.
- 4) **Place your comment cards in the appropriate breed bins by the show secretary table.**

Emergency Contact Information

****Friday February 6, 2015 through Sunday February 8, 2015****

Recorded Weather Message

908-872-7773

Brian Bell- Convention Chair

Emergency Cell Phone – 908-872-7772

2015 PaSRBA Judges

*****PaSRBA reserves the right to add, change or delete judges or judging assignments as deemed necessary.******

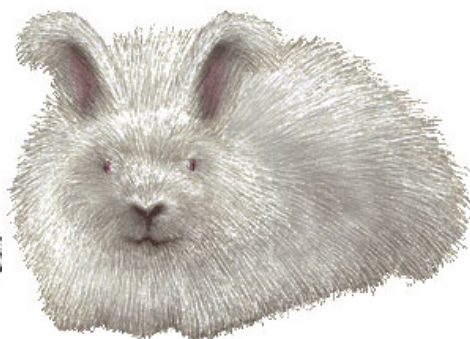
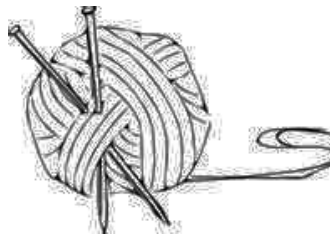
Ruth-Ann Bell - PA
Erik Bengtson - MN
David Cardinal - WI
Joe Colucci - OH
Ryan Fedele - NY
Travis Finkle - MD
Michael Franke - TX
Rob Frizzel - MD
Kelly Flynn - IN
Ashley Garza - OH
Ben Haagen - PA
Johnny Haussener - PA
Corey Hayes - NY
Chris Hayhow - OH
Jenni Himebaugh - MI
Kevin Hooper - OH
Josh Humphries - TN
Pam Jones - MI

Paul Kyle - PA
Joel Marshall - IL
Hannah Means - OH
Todd Naragon - IN
Pam Nock - PA
Bill Patrick - OH
Jim Rolland - FL
Mike Ross - NY
Don Sheets - VA
Randy Shumaker - CA
Piper Smith - PA
John Soper - MI
Eric Stewart - PA
Michelle Uptagrafft - WA
Richard Vaerewyck - PA
Jeremy Watmuff - MI
Scott Weibensohn - CO
Michelle Wojcik - WI

Wool, Skein & Garment Contest

A Wool, Skein and Finished Product/Garment contest will be held at the PaSRBA Convention hosted by one of the Angora Specialty Clubs.

Please visit the PaSRBA convention website at <http://pasrba.org> for information and entry forms.



Awards

(PaSRBA open & youth sponsored shows)

BIS Rabbit/Cavy Special Award

Best of Group Rabbit Special Award

RIS Cavy Special Award

BOB/sanctioned Special Award

BOS/sanctioned Special Award

BOB/non-sanctioned Rosette

Best Fur/Wool Rosette

Placement Ribbons 5 places

Any award required by a Specialty Club and not listed will be paid the cash amount.

Group 1

Mini Rex

Polish

English Lop

Mini Satin

Satin

English Spot

Florida White

Harlequin

Checkered Giant

Palomino

Giant Chinchilla

Blanc De Hotot

Group 2

Holland Lop

Rex

French Lop

Havana

American Fuzzy Lop

French Angora

American Chinchilla

Satin Angora

Rhineland

Britannia Petite

Silver

Giant Angora

Group 3

Netherland Dwarf

Dutch

Californian

Flemish Giant

English Angora

Dwarf Hotot

Silver Marten

Silver Fox

Belgian Hare

American Sable

Lilac

Crème d'Argent

Group 4

Mini Lop

New Zealand

Jersey Wooly

Tan

Himalayan

Thrianta

Champagne d'Argent

Cinnamon

Standard Chinchilla

Beveren

American

Lionhead

2015 Specialty Show Summary

The following breeds will have specialty shows over the weekend. Check the following pages for information pertaining to the sponsoring club and details about their show.

Breed	Open Sat	Youth Sat	Open Sun	Youth Sun
American	X		X	
American Fuzzy Lop	X	X	X	X
American Chinchilla	X		X	
Angora – all breeds	X	X	X	X
Belgian Hare	X		X	
Beveren	X		X	
Britannia Petite	X		X	
Californian	X		X	
Cavy	X		X	
Cinnamon	X			
Checkered Giant	X		X	
Dutch	X	X	X	X
Dwarf Hotot	X	X	X	X
English & French Lop	X		X	X
Flemish Giant	X		X	
Havana	X		X	
Harlequin	X		X	
Himalayan	X		X	
Holland Lop	X	X	X	X
Jersey Wooly	X	X	X	X
Lionhead	X		X	
Mini Lop	X	X	X	X
Mini Rex	X	X	X	X
Netherland Dwarf	X	X	X	X
New Zealand	X		X	
Palomino	X		X	
Polish	X	X	X	X
Rex	X		X	
Rhinelanders			X	
Satin & Mini-Satin	X		X	
Silver Fox	X		X	
Silver Marten	X		X	
Standard Chinchilla	X		X	
Tan	X		X	
Thrianta	X		X	

Mid Atlantic Rabbit and Cavy Shows (MARCS) Sponsored Specialty Shows

Rabbit Show Secretary

Nicole Barbacow
57 S 5th St
Bally, Pa 19503
nikkisminis@yahoo.com

Assisting show secretaries –

Tricia Goforth, Sarah Gregory, Debbie Gregory, and others

AWARDS:

BOB & BOS will receive either Cash Awards based on total number of entries per breed. (Please consider donating all or a portion of your winnings to the ARBA Convention effort)

Ribbons will also be given for BOB, BOS, BOV, BOSV, BOG, BOSG and 1st thru 3rd place. Please make sure you pick up your ribbons as they will not be mailed.

Show Information

Pre-Entry fee: \$4.00 per animal / \$2.00 per fur

*Postmarked by Saturday, January 30th 2015

*Emailed by Monday, February 2nd 2015 by 9:00 pm

Day of Show: \$6.00 per animal / \$3.00 per fur

Please make checks Payable to MARCS

Rabbit:

American	Open	(Sunday Only)
American Chinchilla	Open	(Saturday & Sunday)
American Fuzzy Lop	Open & Youth	(Saturday & Sunday)
Belgian Hare	Open	(Saturday & Sunday)
Beveren	Open	(Saturday & Sunday)
Californian	Open	(Saturday & Sunday)
Checkered Giant	Open	(Saturday & Sunday)
English & French Lop	Open & Youth	(Sunday Only)
English Spot	Open	(Saturday & Sunday)
Flemish Giant	Open	(Sunday Only)
Himalayan	Open	(Saturday & Sunday)
Lionhead	Open	(Saturday & Sunday)
New Zealand	Open	(Sunday Only)
Palomino	Open	(Saturday & Sunday)
Rhineland	Open	(Sunday Only)
Satin & Mini Satin	Open	(Sunday Only)
Silver Fox	Open	(Saturday & Sunday)
Silver Marten	Open	(Saturday & Sunday)
Thrianta	Open	(Saturday & Sunday)

Specialty Show Information

Mid-Atlantic Cavy Breeders Association

Show Secretary George Long 4271 Dillingersville Rd Zionsville, PA 18092 610-967-2085 krittersltd@yahoo.com	Saturday and Sunday (OPEN ONLY) Entries: Day of Show Only Entry Fee: \$5.00/entry
--	--

Appalachian Angora Rabbit Club

Show Secretary Pamela Barnes P.O Box 358 Waterford, VA 20197 757-395-9166 2oaksangoras@gmail.com	Saturday Show (OPEN AND YOUTH) Entries: Mail-In, Email, Day of Show Entry Fees: Mail-in : \$5.00/entry \$2.00/Wool 1/31/15 E-mail: \$5.00/entry \$2.00/Wool 2/4/15 Day of Show: \$7.00/entry \$3.00/Wool
--	---

*There will be a Wool/Skein/Garment Competition on February 7, 2015.
Information on page 6.

United Angora Rabbit Club

Show Secretary Melissa Detrich 1859 Slaughter Station Road Hartly, Delaware 19953 302-670-9912 melynnoes@yahoo.com	Sunday (OPEN & YOUTH) Entries: E-mail, Day of Show Entry Fees: Email: \$4.00/entry \$2.00/wool 2/5/15 by midnight Day of Show: \$6.00/entry \$3.00/wool *If you enter more than 5 angoras, your entry fee will be \$3.50 per animal entered
--	---

Keystone State New Zealand RBA

Show Secretary Tim Repine 467 Doud Road Lawrenceville, PA 16929 repine@frontiernet.net 570-827-3004	Saturday (OPEN ONLY) Entries: Mail-in, Phone, E-mail, Day of Show Entry Fees: Mail-In: \$5.00/rabbit 1/31/15 Phone: \$5.00/rabbit 2/4/15 Email: \$5.00/rabbit 2/4/15 Day of Show \$6.00/entry
---	--

Specialty Show Information

Eastern Holland Lop Specialty Club

Show Secretary

Dawn R. Plokhooy
3882 Banyan Drive
Danielsville, PA 18038
484-695-7203
crwp@hotmail.com

Saturday (OPEN AND YOUTH)

Entries: Mail-in, E-mail and Day of Show
Entries:

Mail-in, Email, Day of Show

Entry Fees: Mail In \$4.00/entry 1/31/15

Email \$4.00/entry 2/4/15

Day of Show \$5.00

Chesapeake Holland Lop Club

Show Secretary

Donna Richards
743 Clearview Avenue
Hampstead, MD 21074
443-789-1166
donna.jrichards@hotmail.com

Sunday (OPEN AND YOUTH)

Entries: Mail-In, E-mail and Day of Show

Entry Fees:

Mail In \$4.00/entry 1/31/15

Email \$4.00/entry 2/4/15

Day of Show \$5.00/entry

Greater Midwest Cinnamon Enthusiasts

Show Secretary

Nicole Keys
112 Mill Street
Greensboro, Maryland 21639
410-913-1683
eaglecreeksrabbitry@gmail.com
greatermce@gmail.com

Saturday
(OPEN ONLY)

Entries: E-mail and Day of Show

Entry Fees:

Email - \$5.00/entry \$2.50/fur 2/4/15

Day of Show: \$6.00/entry \$3.00/fur

Mid Atlantic Satin/Mini Satin Rabbit Breeders Association

Show Secretary

Chris Fauser
50 N. Fulton Street
Manheim, PA 17545
chrisbunny@dejazzd.com
717-665-4676

Saturday (OPEN)

Entries: Mail-in, Phone, Email, Day of Show

Entry Fees:

Mail-In: \$4.00/rabbit 2/1/15

Phone: \$4.00/rabbit 2/6/15

Email: \$5.00/rabbit 2/6/15

Day of Show \$6.00/entry

***Attention Youth Breeders - Information on special Saturday Show on page 35 of catalog.

Specialty Show Information

Majestic Mini Rex Specialty Club

Show Secretary Nicole Barbacow 57 S 5th Street Bally, PA 19053 267-664-3631 nikkisminis@yahoo.com	Saturday and Sunday (Youth And Open) Entries: Mail-In, Email, Day of Show Entry Fees: Mail-in: \$4.50/entry \$2.00/fur if non-mmrc member \$4.00/entry \$1.50/fur if mmrc member 1/30/15 Email: \$4.50/entry \$2.00/fur if non-mmrc member \$4.00/entry \$1.50/fur if mmrc member 2/2/15 9:00pm Day of Show \$8.00/entry \$4.00/fur
---	--

District 2 Netherland Dwarf Rabbit Club

Show Secretary Kyla Fitzpatrick Butts 9807 McMillan Ave. Silver Spring, MD 20910 301-613-3245 Lilfitzy3@aol.com	Sunday (OPEN AND YOUTH) Entries: Mail-in, Email, Day of Show Entry Fees: Mail-in: \$4.00/entry 1/31/15 Email: \$4.00/entry 2/4/15 Day of Show: \$6.00/entry
---	--

Color Me Dwarf Club

Show Secretary Connie Blaine 1030 Hawlings Road Brookeville, MD 20833 301-924-3752 blainecr56@aol.com	Saturday (OPEN AND YOUTH) Entries: Mail-In, Email, Day of Show Entry Fees: Mail-In: \$5.00 1/30/15 Email: \$5.00 2/3/15 Day of Show \$6.00/entry
---	---

Mason-Dixon Rex RBA

Show Secretary Valerie McGill PO Box 322 McClure, PA 17841 valmcgill@verizon.net	Saturday and Sunday (OPEN ONLY) Entries: Mail-in, Email, and Day of Show Entry Fees: Mail-In: \$4.00/rabbit \$1.00/fur 1/31/15 Email: \$4.00/rabbit \$1.00/fur 2/4/15 Day of Show \$6.00/entry \$1.00/fur *MDRRBA members who show 10 or more rabbits: Pre-entries \$3.50/rabbit \$1.00/fur
---	---

Specialty Show Information

East Coast Havana Organization

Show Secretary Monica Gray momica@verizon.net	Saturday and Sunday (OPEN ONLY) Entries: Day of Show Only Entry Fee: \$4.00/entry
--	--

Mid-Atlantic Dwarf Hotot Club

Show Secretary Sally Turner 201 Port Lane Philipsburg, PA 16866 814-342-2474 Rabbit_ranchers@yahoo.com	Saturday and Sunday (OPEN AND YOUTH) Entries: Mail in, Email, Day of Show Entry Fees: Mail In: \$5.00/entry 1/31/15 Email: \$5.00/entry 2/4/15 Day of Show: \$6.00
--	--

Eastern States Flemish Giant Rabbit Breeders

Show Secretary Larry Rishel 2812 Dinnerbell Five Forks Rd Farmington, PA 15437 724-329-8289 esfgrba@hotmail.com	Saturday (OPEN ONLY) Entries: Mail-in, Email, Day of Show Entry Fees: Mail In - \$4.00/entry 2/4/15 E-mail: \$4.00/entry 2/5/15 Day of Show \$5.00/entry
---	---

Eastern States Polish Rabbit Club

Show Secretary Tim Vaillancourt 45 Bruce Street Leominster, MA 01453 tsvaillancourt@gmail.com 978-534-4656	Saturday and Sunday (OPEN AND YOUTH) Entries: Mail in, Email, Day of Show Entry Fees: Mail-In: \$4.00/rabbit 1/27/15 Email: \$4.00/rabbit 2/4/15 by midnight Day of Show \$5.50/entry
--	--

Breeders of the American Rabbit

Show Secretary Kathy Shea 1302 Pine Swamp Road Mt. Pleasant Mills, PA 17853 570-765-6676 americanrabbits@gmail.com	Saturday (OPEN ONLY) Entries: Email & Day of Show Entry Fees: Email: \$5.00/entry 2/5/15 Day of Show: \$5.00/entry **Cash Only
--	---

Specialty Show Information

Mid Atlantic Lop Club

Show Secretary Lynn Miller 3690 Old Charles Town Road Berryville, VA 22611 540-327-3758 spanishoakrabbity@gmail.com	Saturday (Open Only) Entries: Mail-in, Email, Day of Show Entry Fees: Mail in: \$5.00 1/30/15 Email: \$5.00 2/4/15 Day of Show \$6.00/entry
---	---

Colonial Jersey Wooly Rabbit Club

Show Secretary Sharon Gebelein 8 Hastings Street Mendon, MA 01756 860-965-1181 sasartori@aol.com	Saturday and Sunday (OPEN AND YOUTH) Entries: Mail-In, Email, Day of Show Entry Fees: Entry Fees: Mail In \$4.00/entry 2/4/15 Email \$4.00/entry 2/4/15 Day of Show \$5.00
--	--

Chesapeake Regional Dutch Breeders Association

Show Secretary Julie Brown 16 Farley Street Greenwich, CT 06830 203-625-0260 14farley@optonline.net	Saturday and Sunday (OPEN & YOUTH) Entries: Mail-in, Email, Day of Show Entry Fee: Mail-in - \$4.00/entry 1/30/15 E-mail - \$4.00/entry 2/4/15 Day of Show - \$4.00/entry deadline 8:15 am
---	---

Mid Atlantic Tan Club

Show Secretary Jodi Hartman 4014 County Route 14 Canisteo, NY 14823 607-382-6466 jhoptoit@hotmail.com	Saturday and Sunday (OPEN ONLY) Entries: Mail-in, Email, Day of Show Entry Fees: Mail-in: \$4.00/entry 1/30/15 Email: \$4.00/entry 2/4/15 Day of Show \$5.00/entry
---	--

Specialty Show Information

The Eastern Harlequin Rabbit Club

Show Secretary

Melissa Deitrich
1859 Slaughter Station Road
Hartly, Delaware 19953
302-670-9912
melynnoes@yahoo.com

Saturday and Sunday
(OPEN ONLY)

Entries: Email, Day of Show

Entry Fees:

Email: \$5.00/entry 2/5/15 by midnight

Day of show: \$6.00/entry

*If you enter more than 5 rabbits, your entry fee will be \$3.50/animal entered

Northeast Regional Britannia Petite Specialty Club

Show Secretary

Randy Gebelein
8 Hastings Street
Mendon, MA 01756
508-328-0366
randygeb@verizon.net

Saturday & Sunday (OPEN ONLY)

Entries: Mail-in, E-mail, Day of Show

Entry Fees:

Mail-in: \$4.00/entry 2/4/15

Email - \$4.00/entry 2/4/15

Day of Show: \$5.00/entry

Mid Atlantic Mini Lop Club

Show Secretary

Brandy Burroughs-Dunn
4811 Goose Creek Drive
Salisbury, MD 21804
302-381-7320
Bundlesofbunniesrabbitry@yahoo.com

Saturday and Sunday
(Open and Youth)

Entries: Mail-in, Email, Day of Show

Entry Fees:

Mail-in: \$4.00/rabbit 2/3/15 by 9:00 pm

Email: \$4.00/rabbit 2/3/15 by 9:00 pm

Day of Show \$5.00/entry

Eastern States Standard Chinchilla Rabbit Fanciers

Show Secretary

Allen Bush
218 Longley Road
Groton, MA 01450
978-303-7775
bushgiants@verizon.net

Saturday and Sunday
(OPEN ONLY)

Entries: Mail-in, Phone, Email, Day of Show

Entry Fees:

Mail-in: \$4.00/entry 2/4/15

Phone: \$4.00/entry 2/4/15

Email: \$4.00/entry 2/4/15

Day of Show \$5.00/entry

SHOW RULES

General

1. This show will conform to all ARBA show rules.
2. There will be no alcoholic beverages allowed at the show grounds.
3. No vendors without written permission of PaSRBA. All vendors must purchase a vendor booth.
4. Parents, you are responsible for your Children and any damage they may cause!
5. No breeding of animals in the showroom.
6. Exhibitors will be responsible for any damages they cause to the show facilities.
7. **Animals for sale either must be entered in the show or remain outside the show hall. Any animal not entered in the show shall remain outside of the show room.**
8. Grooming of animals only in area provided (Southeast Hall).
9. **Chairs in designated areas only.**
10. There will be a PaSRBA raffle table.
11. There will be a cafeteria for breakfast and lunch.
12. **All exhibitors must comply with posted animal traffic flow to comply with Lebanon Expo Center and PA Health Department regulations. No animal traffic through Center Hall. Violators are subject to fines by PA Health Department.**
13. A registrar will be available all weekend to register your rabbits/cavies.
14. **All animals must be unloaded in areas indicated on the SHOW HALL DIAGRAM.**

Show

1. All stock must be in the show room by 8 am and entered by 8:30 am. Breeds listed elsewhere in this catalog as early check in breeds must be in the showroom and entered by 8 am.
2. At the discretion of the Superintendent, breeds scheduled for judging at 9 am may be given priority check-in. All animals must be entered prior to 8:30am.
3. Carriers must have a leak proof bottom.
4. We will be using ARBA remark cards and PaSRBA entry forms. Only these official forms will be accepted.
5. Youth are located in the Cow Palace, Open Flemish Giants are located in the Cow Palace and Open will be judged in North Hall.
Exception: Angora, Jersey Wooly, Lionheads and Fuzzy Lop Open and All cavies will be in the East Hall (no rabbits permitted).
6. Show room opens at 3pm Friday and 6am Saturday/Sunday.

SHOW RULES

7. Judging will begin promptly at 9:00 AM.
8. Showroom will close promptly at 10pm Friday and 6pm on Saturday. Please plan accordingly.
9. Exhibitors of a breed are responsible for finding a writer for their breed. If writers are not found we will go on to the next breed.
10. PaSRBA may change showing order and judges at any time during the show.
11. Saturday's Open & Youth Show are double PaSRBA Points.
12. PaSRBA reserves the right to make changes to the show at anytime as deemed necessary by the Show Superintendent or Show Committee.

Entries

1. Youth may NOT enter the same rabbit in Open and Youth PaSRBA Shows
2. Make checks payable to PaSRBA.
3. **Returned checks will be processed and resubmitted by PaSRBA's bank resubmission services at the expense of the exhibitor (bank will automatically charge the exhibitor's account the state regulated NSF collections fees for each attempted re-submission). PaSRBA will also charge a \$50 administrative fee to the exhibitor. The exhibitor has 10 days upon notice to make good on the bad check and associated fees (only certified bank check or money order will be accepted). If the exhibitor fails to make good within 10 days including associated fees, the exhibitor will be removed from all show reports and eliminated from the show (cannot be reversed once removed). An additional monthly charge of \$5 will be assessed until the exhibitor has fully resolved the issue. Unresolved issues will be prosecuted.**
4. Post-dated checks will not be accepted.

Animals

1. All animals must have permanent and legible ear marks according to ARBA rules. Animals not properly earmarked will be eliminated with no entry fees refunded.
2. Any animals showing signs of disease will be removed from the showroom and entry fee(s) forfeited.

2015 PaSRBA Convention

Issue Resolution / Escalation Procedure

These issue resolution/escalation procedures must be followed to effectively address and resolve issues or concerns for any PaSRBA sanctioned show. For shows sanctioned by a specialty club, contact the individual listed in the show catalog.

In the showroom	
Paperwork related (entries/cards/control sheets)	Show related
1. Contact the Writer at the show table if judging has commenced (ask to pause judging if escalation is necessary to resolve)	1. Contact the Showroom Superintendent
2. Contact the Show Secretary appropriate for the show	2. Contact the General Superintendent
3. Contact the Showroom Superintendent	3. Contact the Convention General Chair
4. Contact the General Superintendent	
5. Contact the Convention General Chair	

Before or after the show	
Paperwork related (entries/reports)	Show related
1. Contact the Show Secretary appropriate for the show	1. Contact the General Superintendent
2. Contact the General Superintendent	2. Contact the Convention General Chair
3. Contact the Convention General Chair	

Is Your Rabbit Ready for its Close-Up?

Storey Publishing is at the show photographing top-quality rabbits for an upcoming book. If your rabbit is an excellent representative of its breed, we invite you to visit us at our booth, or look for our representative walking the show.



Storey Publishing



Storey is the publisher of *Storey's Guide to Raising Rabbits*, *Rabbit Housing*, and *The Rabbit-Raising Problem Solver*.

VENDORS

KENT NUTRITION GROUP, INC

2905 N. Hwy 61
Muscatine, Iowa 52761
1-563-264-4506 • Shemy.reno@Kentww.com

Rabbit Feed

Delaware Valley RBA

3058 Wentling Schoolhouse Rd
East Greenville, PA 18041
1-215-679-8974 • Barbacow@comcast.net

Rabbit Club Raffle Table

AMY PELLICONE SCENTSY

301 Emegle Grove Road
Narvon, PA 17555
1-610-587-1140 • arabbitry@yahoo.com

Home Fragrance

KRAFTS BY KAREN

Karen Callahan
P.O. Box 2223
Easton, MD 21601
1-410-310-8934 • karensrabbits@hotmail.com

Jewelry, Crafts, Etc.

MARTIN CAGES

4554 Marietta Ave.
Columbia, PA 17512
1-717-684-1864
sales@martincages.com • Martinscages@comcast.net

Cages and Assortment of Rabbit supplies

VENDORS

Storey Publishing

C/O Lynn Stone
118 Ridgewood Ave.
Madison, CT 06443

1-630-336-4110 • Lmstonehp@sbcglobal.net

Publishing Booth For Photographing Rabbits

Pointer Hill Pet Products

625 Hoffzmanville Rd
Bechtelsville, PA 19505
717-754-7830 • Info@pointerhill.com
Carriers, breeding units, cages & more
5% discount on pre-order over \$100.00

ALMOSTA RANCH ALPACAS

950 Railroad Road
Mohrsville, PA 19541
1-610-926-6120 • Almostaranch 96@comcast.net
Alpaca yarn, homemade items,
and some commercial items

Heatherdale Stitchery

139 Heather Circle
Henrietta, New York, 14467
1-585-747-1395 • LKWilbur@rochester.rr.com
Stitchery

RABBIT TUTOR

10204 State Route 108
Wauseon, Ohio 43567
1-517-960-3293 • Rabbit.tutor@gmail.com
Eductional

Annual PaSRBA Banquet

Saturday, February 7, 2015, 7:00 p.m.

at West Hall, Lebanon Expo

Menu:

**Roast Beef and Turkey,
Filling, Mixed Winter Vegetables and
Gourmet Potatoes, Tossed Salad, Roll
Beverage**

Detach and send to:

Sue Werner

897 N. Lancaster Street

Jonestown, PA 17038

wernerfm@hughes.net • 717-865-5727

R.S.V.P. By January 22, 2015

• \$20 per person ages 11 and up

• \$18 per person ages 3 - 10

Make checks Payable to: PaSRBA

Of Tickets ages 11 and up _____

Of Tickets ages 3 - 10 _____

Name _____

Address _____

Phone _____

Email _____

Amount enclosed \$ _____

**Following the meal and then Awards program will be an
IceCream Bar, and a dance will conclude the evening.**

**Anyone wishing to attend the awards and/or dance but
not the meal must pay \$5.00 at the door.**

2015 PaSRBA Sponsors

Platinum

**Martin's cages
Pointer Hill Pet Products**

Gold

Silver

2015 SPONSORS: FOR SPECIAL AWARDS

Lebanon Valley Rabbit breeders Association
Are proud to sponsor the award for
Best In Show Open Saturday

Green Dragon Small Animal Auction LLC
925 North State Street
Ephrata, PA 17522

Sunday morning Continental breakfast
sponsored by Gingrich Animal supply

PaSRBA Open Arts & Crafts Contest

Sunday February 2, 2015

Drop off items -9:00 AM – 11:00 AM

Put your name on the back of every item.

Judging at 12:00 PM pick up at 2:00 PM

Pre entry fee \$1.00 per item Day of show \$2.00 per item

No limits on class entries. Must be 18 years or older.

Awards: Ribbons - First – Third, Best in show award

All entries must relate to a rabbit or cavy

Send entry to Connie Hutchinson

1010 James Ave Ephrata, PA 17522

Do not send cash, write check to PaSRBA

Pre Entries due by January 25, 2015

Classes:

Art – Drawing, Painting, in any medium

Craft – Jewelry, Ceramics, Pottery, Sculpture. Carving, any other

Sewing- Clothing, Needlework, Latch Hook, stuffed rabbit or cavy,
, any other

Photography – Color, Black & White

Wood/Metal- nest box, rabbit equipment

Edible – cup cakes, cookies, cakes etc. Shaped or decorated in
rabbit or cavy form (judged on appearance and taste)

Your items will be watched by chairman until 2:30 PM.

Pick up will be announced.

PaSRBA and members not responsible for damage or loss.

Name _____

Phone _____

Address _____

Email _____

Class	Description
Art	Water Color - rabbit in field of daisies

HOTELS

Lantern Lodge - Host Hotel



\$85+tax per night
Pet Friendly • Restaurant on Site
Breakfast Buffet in restaurant for
Rabbit Exhibitors
411 N. College St.
Myerstown, PA 17067
717-866-6536
www.thelanternlodge.com



Days Inn

\$55+tax per 2 adults/ +\$10 extra per adult over 12.



Two Queen Beds
Mention PaSRBA Rabbit Show
Breakfast Included
Pet Friendly - \$10 Pet Fee per day
3 Everest Lane
Jonestown, PA 17038
717-865-4064

Comfort Inn Jonestown



\$59+tax
Pet Friendly - \$15 Pet Fee
Breakfast
16 Marsanna Ln.
17038 Jonestown
717-865-8080

Due to issues from previous years PaSRBA does not recommend the Days Inn 625 Quentin Rd

HOTELS

Best Western



\$69.99+tax (2 Queens or 1 King)
Pet Friendly - \$15 Pet Fee
Non Smoking Rooms
Continental Breakfast
4 Fisher Ave.
Jonestown, PA 17038
717-865-4234

Holiday Inn Express



\$99+tax (Standard Sized Room 2 Queens or 1 King)
\$25 Pet Fee • Hot Breakfast
2205 E. Cumberland St
Lebanon, PA 17042
717-273-9800

Comfort Inn Manheim



\$129+tax - 1 King Bed
\$139+tax - 2 Queen Beds
Breakfast 6:30 - 9:30
2845 Lebanon Road
Manheim, PA 17545
717-665-3118

Lancaster Inn & Suites



\$119+tax
No Pets
Continental Breakfast
1475 Lancaster Road,
Manheim PA 17545
717-665-5440

Youth Activities

Pasrba convention offers a wide range of activities for youth from showing to education to recreation. If you have questions, e-mail gv@vere.com.

ARBA sanctioned rabbit and cavy show-

There are 2 all breed shows, one Saturday and one Sunday as well as many single breed specialty shows. The all breed shows have a separate youth show where youths 18 and under can exhibit. These shows are all day of show entry which means you should arrive about 7am and enter and pay for your animals that day.

Youth Contests-

There are 8 contests only open to youth which judge your knowledge and accomplishments in various aspects of rabbits and cavies: Achievement, Management, Royalty, Breed ID, Judging and educational exhibits. There is no cost. All of these contests require pre-entry. For descriptions, forms and online entry go to www.pasrba.org/youth. Assistance is available to contestants with disabilities and to young contestants. Please visit the website for a full description of requirements.

Achievement and management- These contests judge your project based on how much you have achieved and how well you manage your herd. It is a pre-entry contest based on your answers to a number of questions. Attendance at convention is not required. ARBA and PaSRBA principal membership is required.

Royalty- This contest selects representatives for PaSRBA for the year based on achievement as well as knowledge, judging and interview skills. ARBA and PaSRBA principal membership is required.

Presentations- (*King, Queen, and any youth 15-18 years old*) - You have to give a three to five minute promotional talk including visual aids. Talks are to be performed by the contestant without help except for special circumstances with prior approval. We have had everything from cavy history humor to necropsy discussions to photography to diseases. The topic, presentation style, visual aids, costumes, etc are entirely open. The presentation is supposed to be for the general public to promote rabbits and/or cavies. The best way to think of how they will be judged is: If you were on the stage at the PA Farm Show would 1) the general public be interested and stay to watch 2) Will it teach them anything? 3) Will it change their view of rabbits and cavies in some positive way? If you win, you will give the talk at the PaSRBA banquet so make sure your visual, audio or anything else can be seen from 50' away. A powerpoint

projector and audio system will be available.

Showmanship- *(all royalty contestants (not king and queen) as well as any youth up to 14 years old.)* PASRBA has adopted the ARBA showmanship format and score sheet and will be using it at all events run by PASRBA. We would encourage all clubs and counties to follow suit.

Breed ID- In this contest you will write down the breed, variety, showroom class, and 4 or 6 class. Entry is available on-line up to 1 week before convention. Open to any youth. Youth can participate as a team of 4. No preregistration is needed. Just enter individually and then notify the Breed ID organizer of your team name before entering the Breed ID area. All team members must enter together. Scores will be evaluated individually as well as as a team.

Judging- Judge 4 classes of 4 rabbits and see how you compare to our ARBA judges. Entry is available on-line up to 1 week before convention. Open to any youth.

Educational Exhibits- Bring in all those rabbit/cavy crafts, project books, stories and anything else. It just has to have a direct connection to rabbits or cavies. Open to any youth. Pre-entry appreciated but entries may be brought and entered between 8 – 10am Saturday.

PaSRBA Banquet and Youth Dance

This is a must do for all youth. Come join us for a great dinner, find out who the distinguished service and lifetime service award winners are and all youth contest winners. Then we'll crown our royalty court and dance the night away to PaSRBA's own DJ Dana Lape. Don't forget- Any PaSRBA member, youth or adult is welcome to nominate members for the distinguished service award.

Youth Activity Schedule

(check WWW.PASRBA.ORG after Jan 15 in case of changes)

Friday 8am-

Setup for the shows starts. Youth are welcome and encouraged to come help. Free lunch is provided to all workers. If you can't make it at 8am, come later since we have major work underway from 8am until 4pm

A Potluck Dinner will be held for all Youth Contest participants and their families. Please bring a dish to share.

Voting will occur for the Youth Choice Award.

Friday 6-9 pm

Royalty contests

Breed ID and Judging- help at least 2 hours and get to go first

King and Queen presentations

Showmanship (all but King and Queen)

Saturday 8am

Royalty written exam

Saturday before 10 am

Educational- deliver to youth table between 8-10am. Please put name and age on the back of the entry or the inside cover of books. All entries should be related to rabbits and cavy in some way. Please pick up by noon on Sunday.

Saturday- Times to be assigned

Royalty interviews

Saturday- Please check the banquet page for time

PaSRBA banquet and dance

Sunday- Please check rabbit hopping section for time

Performance Sports competition in the far end of the youth hall.

Sunday- noon

Tear down starts throughout showroom. Rabbits must be removed from cages. Help is welcome and needed. All affiliated clubs are supposed to provide at least 2 workers for tear down. With lots of assistance, we can be done by 6PM.

PaSRBA Rabbit Hopping and Cavy Agility



Performance Sports Secretary

Monica Gray

momica@verizon.net

Assisting Show Secretary

Beth Gray

bethslittlebunnies@verizon.net



Show Information

Sunday, February 8, 2015 starting at 9 am and concluding at 1 pm

Day of Show \$5 per entry

Entries taken at the East Coast Havana Organization booth on Saturday, February 7

Rabbit Courses offered: Straight Line and High Jump

Cavy Course: Obstacle Course

For complete rules and course description go to www.pasrba.org

PaSRBA Raffle Table

PaSRBA Raffle Table contact:

LuAnn Gallagher at 717-413-3926; luannrg@ptd.net
Marcia Martin at 717-413-4026; marciamar3@aol.com

PaSRBA will be sponsoring a raffle table both Saturday and Sunday. Rabbit clubs are encouraged to donate a basket. Win bragging rights as the club whose baskets received the most tickets! And, have your club's name posted on the PaSRBA website and in the newsletter. Vendor donations are greatly appreciated. They can be dropped off at the raffle table Friday night or Saturday morning. Also, anyone that donates a new item with a receipt will receive 1 free raffle ticket per new item. Cash donations will also be greatly appreciated to be used to purchase raffle items.

PaSRBA Rabbit Raffle

If you are interested in donating a rabbit/cavy; please contact LuAnn Gallagher or Marcia Martin contact information listed above.

We will accept pedigreed animals only and pedigree must accompany animal. It should be marked as a show quality or pet quality animal and have any disqualifications listed.

Live animals will only be accepted Saturday and Sunday morning of the raffle.



Pennsylvania State Convention Official ARBA Judges Conference Friday, February 6, 2015



Education is meant for everyone! Our conference is open to all that have the desire to learn. We have put together a wonderful lineup of presenters from around the country that are excited to share their knowledge with you so, please plan to attend!

Lebanon Valley Expo Center

80 Rocherty Rd.
Lebanon PA 17042
www.lebexpo.com

From Points South

- Pick up rte 72 in Lancaster
 - Go north approx 20 miles
 - First traffic light after Fairview Golf Course turn RIGHT onto Rocherty Rd.
 - Go thru next traffic light.
 - You're at the Expo
-

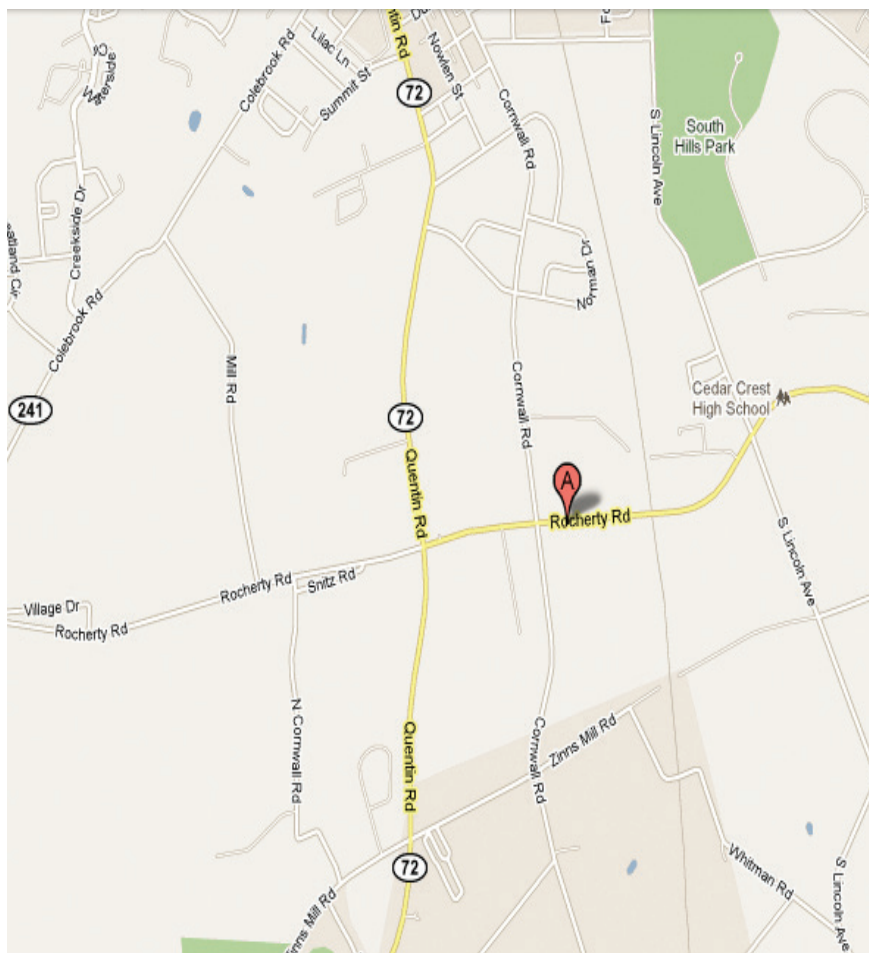
From Points North

- Access Route 72 South thru Lebanon Approximately 2 miles south of Lebanon turn left onto Rocherty Rd.
 - Go thru next traffic light
 - You're at the Expo
-

From Pa Turnpike (rte 76)

- Take Exit #266 Lancaster-Lebanon
 - Route 72 North approx 5 miles to
 - At 2nd traffic light turn right on Rocherty Rd.
 - Go thru next traffic light
 - You're at the Expo
- "All Specialty Shows are PaSRBA Sanctioned"



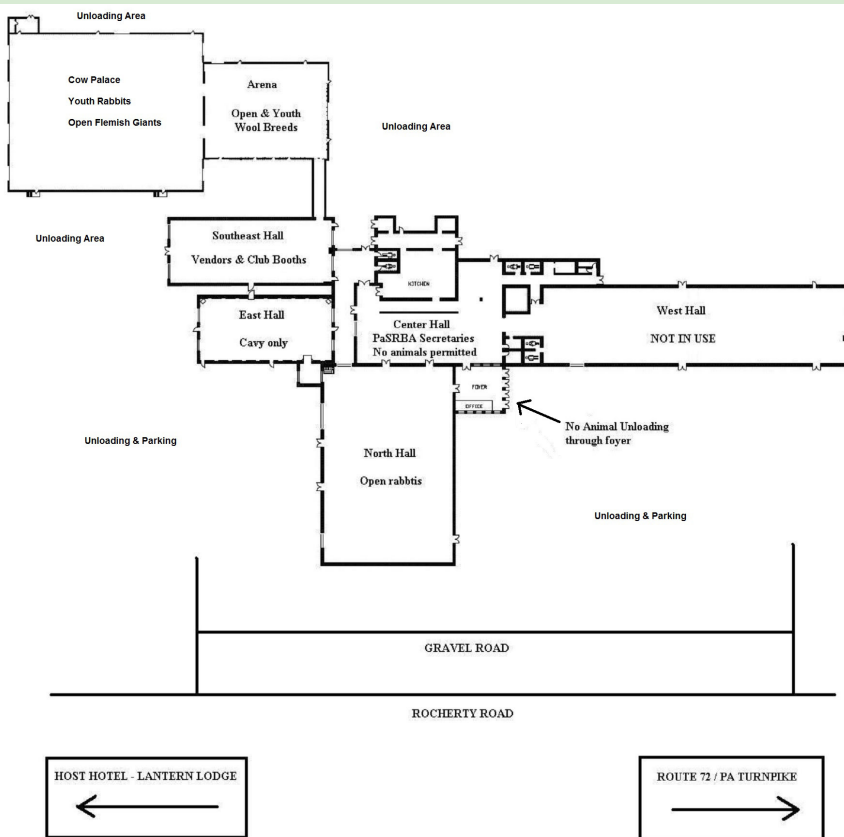


*****YOUTH ACTIVITIES AUCTION*****

The Youth activities Auction needed to be divided into 2 parts this year thanks to the overwhelming generosity of our members. Half of the donations will be sold on a silent auction on Saturday and half will be sold after the banquet. People who don't attend the banquet will have the opportunity to participate and we can shorten the evening of the banquet.

Please bring your donations to the Lebanon Valley Breeders Association booth on Friday evening or Saturday morning. Make sure to label the item and who donated. Contact Art Sweinhart for more information at sweinhart66@comcast.net.

2015 PaSRBA Floor Plan



Meeting Space

There will be a meeting space in West Hall for
PaSRBA Affiliated Clubs.

To arrange for a time to reserve the space
email Lori Jo Whitehaus ljwhitehaus@gmail.com
or see her at the Open Show Secretary

There will no charge to use this room, but a donation to the
PaSRBA raffle table is always accepted.

Overnight Cooping Form

We have ~600 coops with shavings available. Coops will be assigned vertically for all breeds, in all cooping areas, first come first served based on date of postmark. All REQUESTS MUST BE POSTMARKED BY FRIDAY January 24th. NO EXCEPTIONS!

Absolutely NO phone or e-mail cooping requests will be accepted or acknowledged. The cost is \$4.00 per coop (PRE-PAID, non-refundable) for the weekend (Friday evening till 11am Sunday).

Open and Youth rabbits will be cooped in their respective showrooms, Open Flemish Giants will be cooped near where they will be shown. If there is enough interest in cooping for wool breeds we will set up coops in the wool room with no shavings, otherwise they will be cooped in the Youth/Flemish Showhall next to the wool showhall. You will be notified via e-mail when your payment is received.

Total # Rabbits to be cooped **Youth**

Total # Rabbits to be cooped **Open**
(DO NOT include Flemish Giants here).....

Showing Flemish Giants in **Open**
List total # of Flemish to be cooped here

List total # of Wool breeds (**Open & Youth** - Angora, AFL's, Jersey Wooly, Lionhead) to be cooped

Total # Rabbits being cooped
(total of above lines) X \$4.00 =

Name

E-mail
(please print clearly or no e-mail will be sent)

Phone# (____)

Make checks/money orders payable to PaSRBA- (NO CASH!)

Please Mail This Form with Payment to...

Ellen Anderson
7081-A Colebrook Road,
Palmyra PA 17078

PaSRBA Business Meeting

• The meeting will be held on Sunday morning at 7:30 at The LebanonExpo Center in West Hall. Gingrich Animal Supply from Fredericksburg has generously offered to sponsor a Continental Breakfast for PaSRBA Members. We will have juice, milk, donuts, Danish, muffins, ect. If you want coffee...you will need to purchase that at the Eatery.

A big Thank You to the Gingrich Family.

Attention Youth Satin/Mini Satin Exhibitors:

The Mid Atlantic Satin/Mini Satin Rabbits Breeders Association is sponsoring a contest after the Mid Atlantic Specialty Show is completed.

Following Rules for the "Fun – contest Best Rabbit:"

Following rules.

1. Must show your Satins/Mini Satins in the Mid Atlantic Satin/Mini Satin Specialty Show. You pick what you think is your Best Satin or Mini Satin to be judged.
2. Each will be judged- Satin first, followed by the Mini Satin., after the Specialty Show is completed.
3. Awards to be given Your Best Satin, Your Best Mini Satins. The Best of each will be picked for Best Youth Rabbit.

Pennsylvania State Rabbit Breeders Association

Secretary - Sue Werner

987 N Lancaster St., Jonestown, PA 17038

Membership - Robert Kolb

34 N Zinns Mill Rd., Lebanon, PA 17042

Ind. \$10.00 H/W \$13.00 Fam. \$15.00 (1 yr)

Ind. \$27.00 H/W \$35.00 Fam. \$40 (3 yr)

PaSRBA Sanction - Chris Fauser

50 N. Fulton Street, Manheim, PA 17545

Sanction Fee: \$10.00 per show Open & Youth

National Breed Specialty Clubs

BREEDERS OF THE AMERICAN RABBIT, NSC

Rebecca Jones
676 Fish Hatchery Rd
Hamilton, MT 59840
secretary@americanrabbits.org

Membership:

Individual, Adult - \$10; 3 Yrs Adult - \$25;
Husband/Wife - \$15; 3 Yrs - \$40;
Family - \$15 + \$1/child; 3 yrs - \$40 + \$3/child
Sanction Fees: OPEN \$10.00 - YOUTH \$5.00
(Youth is free when requested with Open for same show)
Send Sanction Requests/Show Reports to:
Rebecca Jones
www.americanrabbits.org

AMERICAN CHINCHILLA RABBIT BREEDERS ASSOC.

Diana Young
PO Box 14
Unionville, IN 47468
(812) 339-0040
secam.chin@yahoo.com

Membership:

Individual, Adult - \$9; Youth - \$6; 3 Yrs Adult - \$20;
Youth - \$12; H/W - \$13; 3 Yrs - \$30; Family - \$13 +
\$2/child; Life Membership: \$100.00; All foreign add
\$5.00 to above fees.
Sanction Fees: OPEN \$6.00 - YOUTH \$4.00
Send Sanction Requests/Show Reports to:
Ramona Richardson
6595 E Robinson Rd
Bloomington, IN 47408
(812) 339-2333
richardsonsfeed@sbcglobal.net
americanchinchillarabbitbreedersassociation.com/

AMERICAN FUZZY LOP RABBIT CLUB

Dawn Guth
194 Howe Rd
Kent, OH 44240
(330) 524-4425
bastetsbunnies@yahoo.com

Membership:

Individual, Adult/Youth - \$17; Renewal - \$12; 3 Yrs
- \$37; Renewal - \$32; Family - \$22 + \$2 per child;
Renewal - \$17 + \$2 per child; 3 Yrs - \$54 + \$6 per
child; Renewal - \$48 + \$6 per child; Canadian -
\$22 US/yr (Single); All other foreign - \$35 US/yr
(Single)
Sanction Fees: OPEN \$10.00 - YOUTH \$8.00
Send Sanction Requests/Show Reports to:
Rob Grady
PO BOX 267
Elbert, CO 80106
(303) 648-9976
aflrcsweepchair@att.net
aflrc.weebly.com

AMERICAN SABLE RABBIT SOCIETY

Myron W. Dinsdale
112 North Main Street
Traer, Iowa 50675-1028
(641) 751-5316
sables@mediacommb.net

Membership: July 1 - June 30

1 Year Individual \$10.00, 3 Years - \$25.00, 1

Year Youth \$8.00, 3 Years \$20.00, 1 Year Family
\$14.00, 3 Years \$35.00, 1 Year Two Members the
same household \$12.00, 3 Years \$30.00. *Note:
Family Membership is only first two Youth. After
2nd youth, each additional youth is 1 Year \$3.00, 3
Years \$5.00;
Sanction Fees: OPEN \$8.00 - YOUTH \$5.00
(Youth is free when requested with Open for same
show)
Send Sanction Requests to:
Myron W. Dinsdale
Send Show Reports to:
Myron Dinsdale
sablesweeps@gmail.com
www.americansables.org

AMERICAN BELGIAN HARE CLUB

Tracy Mercer
18274 R57 Highway
Indianola, IA 50125
515-971-6884
bunnymomma@peoplepc.net

Membership:

Membership Annual Adult 7.50 Youth 5.00 (youth
under the age of 18)
Sanction Fees: OPEN or YOUTH \$5.00
(Youth is free when requested with Open for same
show)
Send Sanction Requests/Show Reports to:
Debbie Knight
4310 Richville Dr. SW
Canton, OH 44706
234-207-9507
abhcsweeps@yahoo.com
www.belgianhareclub.com

AMERICAN BEVEREN RABBIT CLUB

Meg Whitehouse
480 Colts Neck Road
Farmingdale, NJ 07727
(732) 547-7404
wwhiteh404@aol.com

Membership:

Individual, Adult or Youth - \$7.50; Family (2 adults,
2 children under 18) - \$10; add additional \$2.50/
each child under 18
Sanction Fees: OPEN \$7.00 - YOUTH \$5.00
Send Sanction Requests/Show Reports to:
Meg Whitehouse
www.freewebs.com/beverens/

HOTOT RABBIT BREEDERS INTERNATIONAL

Matthew Hinderman
5988 South Mohawk
Ypsilanti, MI 48197
(734) 904-3617
matthewhinderman@yahoo.com

Membership:

Adult - \$10; Youth - \$5; Husband/Wife - \$14;
International Fee - \$18;
Sanction Fees: OPEN \$5.00 - YOUTH \$5.00
Send Sanction Requests/Show Reports to:
Matthew Hinderman
www.hrbi.org

National Specialty Club Information

AMERICAN BRITANNIA PETITE RABBIT SOCIETY

Diane Giordani
20 Sheffield Park
Plympton, MA 02367
(781) 585-4741
fhrabbitry129@gmail.com

Membership:

Adult - \$10, \$25 3 yrs; Youth - \$7.50, \$20 3 yrs;
H/W - \$15, \$40 3 yrs; Family - \$15 (plus \$2.00/
child), \$40 3 yrs (plus \$5/child);
Foreign surcharge - \$3;
Sanction Fees: OPEN \$8.00; YOUTH \$6.00;
COMBINATION OPEN/YOUTH \$12.00
Send Sanction Requests/Show Reports to:
Diane Giordani
www.britanniapetites.com

AMERICAN CAVY BREEDERS ASSOCIATION

James D. Nielsen
1157 E. San Angelo Ave
Gilbert, AZ 85234
(480) 545-1785
ACBAsec-treas@nghs.net

Membership:

Adult - (New) \$25, (Renewal) \$20, 3 yrs (New) \$60,
3 yrs (Renewal) \$55; Youth - (New) \$20, (Renewal)
\$15, 3 yrs (New) \$45, 3 yrs (Renewal) \$40; Family
- (New) \$30, (Renewal) \$25, 3 yrs (New) \$75, 3
yrs (Renewal) \$70; Canadian Members Add \$5/yr,
Other Foreign Add \$20/yr;
Sanction Fees: OPEN \$10.00 - YOUTH \$8.00
Send Sanction Requests to:
James D. Nielsen
Send Sweepstakes Reports to:
Dan & Rosie McParland
2719 Coventry Ln
Ocoee, FL 34761
dmcparland@cfl.rr.com
www.acbaonline.com

CALIFORNIAN RABBIT SPECIALTY CLUB, INC

Susan Yeary
3201 North Alamo Road
Edinburg, TX 78542-1480
(956) 383-2228
yearycals@att.net

Membership: Adult - \$10, 3 yrs \$28; Youth - \$5,
3 yrs \$15; Husband/Wife - \$15, 3 yrs \$43; Family -
\$15 (plus \$2 each youth), 3 yrs \$43 (plus \$6 each
youth) Youth must join at same time as adults.
Youth birth date is required.

Sanction Fees: OPEN \$10.00 - YOUTH \$5.00
Send Sanction Requests to:

Susan Yeary
Send or E-MAIL ONLY Show Reports to:
Ken McCracken
13550 Spring-Cypress Rd
Cypress, TX 77429-2095
caltxrab@msn.com
www.californianrabbitspecialtyclub.com

CHAMPAGNE D'ARGENT RABBIT FEDERATION

Lenore Gergen
14914 Bittersweet Ct
Rosemount, MN 55068
(651) 283-0202
cdarfsec@gmail.com

Membership:

Adult - \$10, \$27 3 yrs; Youth - \$8; Husband/Wife -
\$12, \$33 3 yrs; Family or Rabbitry - \$15, \$42; New
members please add add a \$5.00 one-time fee;
Foreign add \$15 surcharge per year.
Sanction Fees: OPEN \$10.00; YOUTH \$8.00
Send Sanction Requests/Show Reports to:
Lenore Gergen
http://champagnedargent.weebly.com/

AMERICAN CHECKERED GIANT RABBIT CLUB

David Freeman
1119 Klondyke Rd
Milford, Oh 45150
(513) 576-0804
davidfreemanacgrc@yahoo.com

Membership:

(New) \$20, (\$5 each additional member at the
same address); (Renewal) \$10 (\$5 each additional
member at the same address); Foreign (New)
\$20, (\$10 each additional member at the same
address); (Renewal) \$20 (\$10 each additional
member at the same address)
Sanction Fees: OPEN ONLY \$10.00
Send Sanction Requests to:
David Freeman
Send Show Reports to:
Sue Gillispie
11601 Maries Road 302
Vienna, MO 65582
or email to: acgrcsweepstakes@yahoo.com
maddawg1072.wix.com/acgrc

CINNAMON RABBIT BREEDERS ASSOC

Margaret Howard-Weigel
W248 N7411 Beverly Lane
Sussex, WI 53089
262-894-3647
weshowbuns@aol.com

Membership:

Adult - \$8, 3 yrs \$20; Youth - \$4, 3 yrs \$10;
Husband/Wife - \$12, 3 yrs \$30;
Sanction Fees: OPEN \$10.00 - YOUTH \$6.00
Send Sanction Requests/Show Reports to:
Margaret Howard-Weigel
Show reports may be emailed to:
weshowbuns@aol.com
www.cinnamonrabbitbreedersassociation.webs.com

National Specialty Club Information

CREME D'ARGENT RABBIT FEDERATION

Travis West
2290 Factory Rd
Albany, OH 45710
(740) 698-3014
cremedargent@hotmail.com

Membership:

Adult - (New) \$13, \$30 3 yrs, (Renewal) \$10,
\$27; Youth - (New) \$10, \$21 3 yrs, (Renewal) \$7,
\$18 3 yr; Husband/Wife - (New) \$18, \$43 3 yrs,
(Renewal) \$15, \$40 3 yr; Family - (New) \$18 (plus
\$4/child), \$43 3 yrs (plus \$9/child), (Renewal) \$15
(plus \$4/child), \$40 3 yrs (plus \$9/child);
Sanction Fees: OPEN \$6.00; YOUTH \$6.00
(OPEN/YOUTH Combined \$10.00) Must provide
\$2 for Best Senior, Best Intermediate, Best Junior
and Best Breed if more than 5 or more are shown.
Send Sanction Requests/Show Reports to:

Travis West
www.cremedargent.org

AMERICAN DUTCH RABBIT CLUB

Janet Bowers
3520 Baker Rd
Olivet, MI 49076
517-449-8341
AmDutchClub@aol.com

Membership:

Adult - (New) \$15, (Renewal) \$10; Youth - (New)
\$13, (Renewal) \$8; Husband/Wife - (New) \$19,
(Renewal) \$14; Family - (New) \$25, (Renewal)
\$20;

Sanction Fees: OPEN \$12.00; YOUTH \$10.00

Send Sanction Requests to:

Janet Bowers
Send Show Reports to:
Tiffany Wayne
32881 790th Ave
Ellendale, MN 560269
507-383-0849
Football_chick_8@hotmail.com
www.dutchrabbit.com

AMERICAN DWARF HOTOT RABBIT CLUB

Tonna Thomas
22267 Hwy ZZ
Marionville, MO 65705
(417) 463-7146
tthomas00@sbcglobal.net

Membership:

Adult - \$10, Youth - \$7, Husband/Wife - \$15;
Family - \$15 (\$2/child); Lifetime (1 Adult) - \$150,
(2 Adults) \$200; Foreign add \$10/yr service charge;

Sanction Fees: OPEN \$10.00 - YOUTH \$6.00

Send Sanction Requests to:

Tonna Thomas
Send Show Reports to:
Bill Whaley
131 Maple Ridge Dr
Old fort, NC 28762
(828) 668-6110
hotot45@aol.com
www.adhrc.com

NATIONAL ANGORA RBC, INC

Margaret Bartold
909 Highway E
Silex, MO 63377
(573) 384-5866
tomar5866@windstream.net

Membership:

Adult - \$10, \$18 2 yrs, \$27 3 yrs; Youth - \$5, \$10
2 yrs, \$15 3 yrs; Rabbitry (two people at the same
address) - \$15, \$25 2 yrs, \$35 3 yrs; Family - \$20,
\$30 2 yrs, \$40 3 yrs; Canada: add \$8 to above
fees. All other foreign: add \$10 to above fees.

Sanction Fees: OPEN \$12.00 All 4 Breeds (youth
sanction is free when obtained with open); (OPEN
only \$12.00 all 4 breeds; YOUTH only \$5.00 All
4 Breeds; FAIR SHOWS \$5.00 for each breed or
\$12.00 All 4 Breeds

Send Sanction Requests/Show Reports to:

Margaret Bartold
www.nationalangorarabbitbreeders.com

LOP RABBIT CLUB OF AMERICA

Sandy Bennett
323 Macedon Dr
Lexington, SC 29073
lrcasec@gmail.com

Membership:

Adult - (New) \$15, (New 2 yr) \$20, (Renewals)
\$10/year; Youth - (New) \$10, (New 2 yr) \$14,
(Renewals) \$7/yr; Husband/Wife - (New) \$20,
(New 2 yr) \$30, (Renewal) \$15/yr; Family - (H/W
fee plus \$5/child/year); Foreign add \$6/year; Only
1 copy of the Lop Guidebook is sent per household.
Only 1 copy of the Lop Digest (newsletter) is sent
per household unless otherwise requested.

Sanction Fees: OPEN \$15.00; YOUTH \$8.00

Send Show Reports and Sanction Requests to:

Richard Gehr
190 N First Avenue
Coal City, IL 60416
nwgehr@cbcast.com

AMERICAN ENGLISH SPOT RABBIT CLUB

Michael C Wiley SR
5772 Owenton Rd
Stamping Ground, KY 40379-9614
(502) 535-7051
(no calls after 8 pm EST)
michaelcwiley@gmail.com

Membership:

Adult - (New) \$15, (Renewal) \$13; Youth - (New)
\$12, (Renewal) \$7; Husband/Wife - (New) \$25,
(Renewal) \$20; Family - (New) \$25, (Renewal) \$20
(plus \$2/child); Foreign same as US (all fees in US
funds)

All foreign memberships and/or sanction fees must
be paid in US currency or drawn on a US bank,
including postal and regular moneyorders.

Sanction Fees: OPEN \$12.00 - YOUTH \$7.00
"500 Mile Rule" AESRC Inc's National All English
Spot Show is held on a Saturday.

Send Sanction Requests/Show Reports to:

Michael C Wiley SR
(address above)

National Specialty Club Information

NATIONAL FEDERATION OF FLEMISH GIANT RABBIT BREEDERS, INC

Wayne Bechdel
117 Hollow Road
Lockhaven, Pennsylvania 17745
(570) 769-6059
wbechdel@wildblue.net

Membership:

Adult/Youth - (New) \$20, (Renewal) \$15; Husband/Wife - (New) \$20, (Renewal) \$15; Family - (New) \$22 + \$3.00 per child, (Renewal) \$20 + \$2.00 per child; Canada (Single) - (New) \$30, (Renewal) \$20; All other foreign (Single) - (New) \$40, (Renewal) \$35;
Sanction Fees: OPEN \$10.00; YOUTH \$10.00;
OPEN/YOUTH Combination \$18.00
(Must use same show secretary)
Send Sanction Requests/Show Reports to:
Wayne Bechdel

FLORIDA WHITE RABBIT BREEDERS ASSOC

Jane Meyer
1795 N. 1800 E. Rd
Thawville, IL 60968
(217) 387-2427
Floridawhitesec@gmail.com

Membership:

Adult - \$7, \$18 3 yrs; Youth - \$5, \$12 3 yrs;
Husband/Wife (or partners) - \$10, \$25 3 yrs;
Family - \$15, \$40 3 yrs; Single Life - \$100, H/W \$175;
Sanction Fees: OPEN \$10.00; YOUTH \$5.00;
OPEN/YOUTH Combination \$10.00
Send Sanction Requests/Show Reports to:
Jane Meyer

GIANT CHINCHILLA RABBIT ASSOC

Mary Ellen Stamets
37 Brown St
Flemington, NJ 08822-1536
(908) 782-0462
mrabbit67@yahoo.com

Membership:

Adult - \$9, \$25 3 yrs; Youth - \$5, \$12 3 yrs;
Husband/Wife - \$13; Family - \$13 (plus \$2/child);
Sanction Fees: OPEN \$8.00 - YOUTH \$3.00
(Youth free if requested with Open)
Send Sanction Requests/Show Reports to:
Mary Ellen Stamets
giantchinchillarabbits.webs.com

AMERICAN HARLEQUIN RABBIT CLUB

Pamela Granderson
14991 Opera Road
Leopold, Indiana 47551
(812) 843-5460

Membership:

Adult - \$5; Youth - \$4; Husband/Wife - \$7; Family - \$10;
Sanction Fees: OPEN \$6.00; YOUTH \$6.00
Youth free when requested with open.
Send Sanction Requests/Show Reports to:
Pamela Granderson
(address above)

HAVANA RABBIT BREEDERS ASSOC

Tanya Zimmerman
N9487 Walnut Rd
Clintonville, WI 54929
(715) 823-5020
havanasecretary@yahoo.com

Membership:

Adult - \$8, \$20 3 yrs; Youth - \$6, \$14.50 3 yrs;
Husband/Wife - \$11.50, \$29.50 3 yrs; Family - \$11.50 (\$3.50/child); Foreign Membership - Add \$5 to each option;
Sanction Fees: OPEN \$7.00; YOUTH \$5.00;
OPEN/YOUTH Combination \$10.00
Send Sanction Requests/Show Reports to:
Tanya Zimmerman
www.havanarb.org

AMERICAN HIMALAYAN RABBIT ASSOC

Errean Kratochvil
2159 Bendway Dr
Port Charlotte, FL 33948
(727) 847-1001
mailto:himi1@yahoo.com

Membership:

Adult - \$10, \$25 3 yrs; Youth - \$8, \$20 3 yrs;
Husband/Wife - \$12, \$30 3 yrs; Family - \$12, \$30 3 yrs (plus \$2/child/year);
Sanction Fees: OPEN \$7.00 - YOUTH \$7.00
OPEN/YOUTH COMBINATION - \$10.00
Send Sanction Requests to:
Errean Kratochvil
Send Show Reports to:
Teri Peterson
16786 County Road 32
Platteville, CO 80651
www.himalayanrabbit.com

HOLLAND LOP RABBIT SPECIALTY CLUB

Pandora Allen
2633 Seven Eleven Rd
Chesapeake, VA 23322-3144
(757) 421-9607
hlrscsec@verizon.net

Membership:

Adult - \$15; Youth - \$12; Husband/Wife - \$19;
Family - \$22
Canada/New Mexico: Add \$5 per year service charge.
All other Foreign: Add \$10 per year service charge.
Sanction Fees: OPEN \$15.00; YOUTH \$10.00
Send Sanction Requests/Show Reports to:
Debra Sandoval
31765 Road 400
Coarsegold, CA 93614
debra.sandoval@gmail.com
www.hlrsc.com

National Specialty Club Information

NATIONAL JERSEY WOOLY RABBIT CLUB

Amber Henderson
1313 Limekiln Road
Hollister, CA 95024
(831) 537-8752
njwrcsecretary@gmail.com

Membership:

Adult - (New) \$15, \$35 3 yrs, (Renewal) \$12, \$25 3 yr; Youth - (New) \$12, (Renewal) \$9; Family (2 Adults and any children under 19 residing at same address) - \$25, \$60 3 yr; First Class option for newsletter - \$5/year; Foreign Surcharge - \$5/year; Sanction Fees: OPEN \$10.00; YOUTH \$10.00
Send Sanction Requests/Show Reports to:
Dennis Alsop
1625 Carriage Lane
Cookeville, TN 38506
njwrcsweeps@gmail.com
www.njwrc.net

NATIONAL LILAC RABBIT CLUB OF AMERICA

Mallary Goldman
3716 Meadow Lake Dr
Alvarado, TX 76009
214-796-2356
Diesel12@flash.net

Membership:

Adult - \$4; Youth - \$4; Husband/Wife - \$8; Family - \$8;
Sanction Fees: OPEN \$5.00 - YOUTH \$5.00
(Youth free if requested with Open)
Sanction Requests/Show Reports to:
Mallary Goldman
nlrca.webs.com

AMERICAN MINI LOP RABBIT CLUB

Wendy Brabender
1688 Hammen Drive
Cambridge, WI 53523
608-438-1772
frogpond@bminet.com

Membership:

Adult - (New) \$15, \$40 3 yr, (Renewal) \$12, \$30 3 yrs; Youth - (New) \$12, \$30 3 yr, (Renewal) \$8, \$20 3 yrs; Husband/Wife - (New) \$19, \$52 3 yr, (Renewal) \$15, \$40 3 yrs; Family - (New) \$25, \$70 3 yr, (Renewal) \$20, \$55 3 yrs;
Sanction Fees: OPEN \$13.00; YOUTH \$10.00 US funds only
Send Sanction Requests/Show Reports to:
Nicole Schmitt
505 E Henry Clay St #104
Whitefish Bay, WI 53217
amlrc.sweeps@gmail.com
www.amlrc.com

NATIONAL MINI REX RABBIT CLUB

Doug King
2719 Terrace Ave
Sanger, CA 93657
559-787-2588
NMRRCSecretary@gmail.com

Membership:

Individual - \$15, \$40 3 yrs; Individual (Canadian) - \$30, \$80 3 yrs; Youth - \$15, \$40 3 yrs; Youth (Canadian) - \$30, \$80 3 yrs; Husband/Wife - \$20, \$50 3 yrs; Husband/Wife (Canadian) - \$40, \$100 3 yrs; Family (up to 3 children) - \$30, \$75 3 yr; Family (Canadian) - \$60, \$150 3 yr;
Sanction Fees: OPEN \$12.00; YOUTH \$12.00
Send Sanction Requests to:
Doug King
Send Open Show Reports to:
Margaret Potter
1401 W Sian Drive
Sanford, MI 48657
989-430-9161
mlouise1950@yahoo.com
Send Youth Show Reports to:
Christy Posey
276 Coleman Bridge Rd
Aiken, SC 29805
803-649-5567
showbunny50@gmail.com

AMERICAN SATIN RABBIT BREEDERS ASSOC

Gina Cavender
PO Box 5
Jamestown, IN 46147
(765) 894-2223
bhsatins@gmail.com

Membership:

Adult - (New) \$17, \$35 3 yr, (Renewal) \$12, \$30 3 yr; Youth - (New) \$14, \$28 3 yr, (Renewal) \$9, \$23 3 yr; Husband/Wife - (New) \$19, \$40 3 yr, (Renewal) \$14, \$35 3 yr; Family - (New) \$22, \$46 3 yr, (Renewal) \$17, \$41 3 yr;
Sanction Fees: OPEN \$15.00 - YOUTH \$8.00
Send Sanction Requests to:
Gina Cavender
Send Show Reports to:
Paul Smith
1591 Cornfield Way
Oliverhurst, CA 95961
paulindas@hotmail.com

AMERICAN NETHERLAND DWARF RABBIT CLUB

Susan Clarke Smith
864 Barkers Creek Road
Whittier, NC 28789
(828) 586-9698
andrcsecy@yahoo.com

Membership:

Adult - (New) \$15, \$40 3 yr, (Renewal) \$13, \$35 3 yrs; Youth - (New) \$10, \$25 3 yr, (Renewal) \$8, \$20 3 yrs; Family (2 members) - (New) \$20, \$45 3 yr, (Renewal) \$15, \$37 3 yrs; Family (3+ members) - (New) \$25, \$50 3 yr, (Renewal) \$20, \$42 3 yrs;
Canada & Mexico - Add \$8/year; All Other Foreign - Add \$15/year; US Funds.
Sanction Fees: OPEN \$15.00; YOUTH \$10.00
Send Sanction Requests/Show Reports to:
Richard Gehr
190 N First Ave
Coal City, IL 60416
wgehr@cbcast.com

National Specialty Club Information

AMERICAN FEDERATION OF NEW ZEALAND RABBIT BREEDERS

John T Neff
1351 Holder Lane
Geneva, FL 32732
(407) 349-0450
newzealand1121@aol.com

Membership:

Adult - \$15, (Renewal) \$13; Youth - \$13, (Renewal) \$8; Husband/Wife - \$17, (Renewal) \$15; Family - \$28, (Renewal) 23; Canada - \$16, (Renewal) \$14; Foreign - (New or Renewal) \$40/person; Lifetime - \$240/person or \$250 for H/W;
Sanction Fees: OPEN \$12.00; YOUTH \$8.00
Send Sanction Requests/Show Reports to:
John T Neff
www.newzealandrabbitclub.net

PALOMINO RABBIT CO-BREEDERS ASSOC

Cathy Dunkle
PO Box 84
Latah, WA 99018
509-286-3034
palominoclubsec@yahoo.com

Membership:

Adult - \$8, \$20 3 yr; Youth - \$5, \$12 3 yr; Husband/Wife (or 2 adults) - \$12, \$30 3 yr; Family - \$12 plus \$2.50/child; \$30 plus \$7.50/child 3 yr; Foreign - Add \$2 extra/person/year;
Sanction Fees: OPEN \$10.00 - YOUTH \$5.00 (Youth free with paid Open)
Send Show Reports to:
Cathy Dunkle
www.palominorabbits.com

AMERICAN POLISH RABBIT CLUB

Patti Walthrop
2405 Greenridge Ct
Euless, TX 76039
(817) 312-0305
pwalthrop@tx.rr.com

Membership:

Adult - \$10, \$25 3 yr; Youth - \$8, \$20 3 yr; Husband/Wife (or 2 individuals at the same address) - \$12, \$30 3 yr; Family - \$15, \$35 3 yr; Foreign Membership - Add \$10/year to above fees;
Sanction Fees: OPEN \$10.00; YOUTH \$10.00
Send Sanction Requests to:
Patti Walthrop
Send Show Reports to:
Ken McCracken
13550 Spring Cypress Rd
Cypress, TX 77429-2095
(832) 260-2398
caltxrab@msn.com
www.americanpolishrabbitclub.com

NATIONAL REX RABBIT CLUB

Arlise DeLoyola
PO Box 1465
Cave Junction, OR 97523
nationalrex@yahoo.com

Membership:

Individual Adult or Youth (New) - \$15 (Each additional person at same address - \$5), 3 yr \$30 (Each additional person at same address - \$12); (Renewal) \$10 (Each additional person at same address - \$5), 3 yr \$25 (Each additional person at same address - \$12);
Sanction Fees: OPEN \$10.00; YOUTH \$7.00
Send Sanction Requests to:
Arlise DeLoyola
Send Show Reports to:
Joe Willoughby
250 Mustang Dr
Evanston, WY 82930
nationalrexc.org

RHINELANDER RABBIT CLUB OF AMERICA

Melanie Peterman
205 Levrio Road
Blairsville, PA 15717
(724) 420-6005
earsrusdgc@aol.com

Membership:

Adult (New) - \$15, \$30 3 yr, (Renewal) \$10, \$25 3 yr; Youth (New) - \$11, \$20 3 yr, (Renewal) \$6, \$15 3 yr; Husband/Wife (New) - \$20, \$45 3 yr, (Renewal) \$15, \$40 3 yr; Family (2 adults & up to 3 children) - (New) \$30, \$75 3 yr; (Renewal) \$25, \$70 3 yr; Foreign: Adult (New) - \$25, \$55 3 yr, (Renewal) \$20, \$50 3 yr; Youth (New) - \$20, \$45 3 yr, (Renewal) \$15, \$40 3 yr; Husband/Wife (New) - \$30, \$75 3 yr, (Renewal) \$25, \$70 3 yr; Family (2 adults & up to 3 children) - (New) \$40, \$95 3 yr; (Renewal) \$35, \$90 3 yr; Sanction Fees: OPEN \$8.00 - YOUTH \$3.00 (Youth free with paid Open)
Send Show Reports to:
Wes Planthaber
11237 Summit School Rd
Huntingdon, PA 16652
(814) 667-2406
wplanthaber@verizon.net
www.rhinelanderrabbits.com

NATIONAL SILVER RABBIT CLUB

Laura Atkins
1030 SW KK Hwy
Holden, MO 64040-8221
(816) 732-6208
silverrabb@yahoo.com

Membership:

Individual - \$7, \$17.50 3 yr; Youth - \$5, \$10 3 yr; Husband/Wife - \$10; \$25 3 yrs; Family - \$12.50, \$30 3 yr;
Sanction Fees: OPEN/YOUTH \$7.00 (YOUTH free when requested with OPEN)
Send Sanction Requests/Show Reports to:
Laura Atkins
www.silverrabbitclub.com

National Specialty Club Information

NATIONAL SILVER FOX RABBIT CLUB

Deb Dvorak
11405 West Farmington Rd
Hanna City, IL 61536
(919) 353-9200
nsfrsec@gmail.com

Membership:

Adult - \$10; Youth - \$7.50; Husband/Wife - \$12;
Family - \$12 (plus \$3/person/year at same
address);

Sanction Fees: OPEN \$7.50; YOUTH \$7.50
(YOUTH free if requested with OPEN sanction)

Send Sanction Requests/Show Reports to:
Deb Dvorak

Sweepstakes Chair: Josette Schaber
nsfrsweeps@gmail.com
www.nsfrc.com

SILVER MARTEN RABBIT CLUB

Stephanie Myers
PO Box 129
Echo, OR 97926
541.289.2444
hhs2osu@hotmail.com

Membership:

Adult (New) - \$12, \$21 3 yr, (Renewal) \$7, \$18 3
yr; Youth (New) - \$9, \$15 3 yr, (Renewal) \$5, \$12 3
yr; Husband/Wife (New) - \$16 (add \$3/child), \$30
3 yr (add \$5/child), (Renewal) \$10 (add \$2/child),
\$25 3 yr (add \$5/child); Foreign - Add \$5 surcharge
per membership per year.

Sanction Fees: OPEN \$8.00 - YOUTH \$4.00

Send Sanction Requests to:

Stephanie Myers
Send Show Reports to:
Sarah Bosio
10063 Stillwater Road SE
Uhrichsville, OH 44683
www.silvermarten.com

AMERICAN STANDARD CHINCHILLA RABBIT BREEDERS ASSOC

Patricia Gest
1607 9th St. West
Palmetto, FL 34221
(941) 729-1184
cgest@aol.com

Membership:

Adult - \$8, \$22 3 yr; Youth - \$5, \$12 3 yr; Husband/
Wife - \$12.00, \$27 3 yr; Foreign service charge \$3
per year.

Sanction Fees: OPEN/YOUTH \$7.50
(YOUTH free if requested with OPEN and held
same day)

Send Sanction Requests/Show Reports to:
Patricia Gest
www.ascrba.com

AMERICAN TAN RABBIT SPECIALTY CLUB

Paula Schutz
105 Ulsterville Rd
Pine Bush, NY 12566
(845) 744-3900
atrscsecy@gmail.com

Membership:

Single (New) - \$13, (Renewal) \$8; Youth (New)
- \$10, (Renewal) \$5; Husband/Wife (New) - \$17,
(Renewal) \$12; Family (New) - \$20, (Renewal)
\$15; Lifetime - \$150/person;

Sanction Fees: OPEN \$10.00; YOUTH \$4.00
Free sanction given for future show if no Tans are
shown.

Send Show Reports to:

Jodi Hartman
4014 County Rte. 14
Canisteo, NY 14823
jhoptoit@hotmail.com
Send Sanction Requests to:
Paula Schutz
www.atrsc.org

AMERICAN THRIANTA RABBIT BREEDERS ASSOC

Tina Reif
205 Mountain Laurel Ln
West Union, SC 29696
(864) 718-1118
creif1@yahoo.com

Membership:

Single Adult - \$10; Youth - \$7; Husband/Wife- \$15;
Family - \$15.00 plus \$5.00 for each additional
youth or adult at the same address; Foreign - Add
\$10 US funds per year service fee;

Sanction Fees: OPEN \$10.00 - YOUTH \$7.00

Send Sanction Requests/Show Reports to:
Tina Reif
atrba.net

American Rabbit Breeders Association, Inc.

Eric Stewart, Executive Director

PO Box 5667 Bloomington, IL 61702

Office Hours:

Monday - Friday 8:00 AM - Noon and 12:45 PM - 4:30 PM CST

Phone: (309) 664-7500 Fax : (309) 664-0941

Email: ARBAPOST@aol.com



MARTIN'S CAGES, INC

Manufacturer of Quality Pet cages

Over 100 different styles of Pet cages available

Beta tested/Bunny approved



Martin's Cages, Inc.
4554 Marietta Ave.
Columbia, PA 17512
1-888-451-2234

PLEASE VISIT OUR WEBSITE
<http://www.martinscages.com>



Pointer Hill Pet Products

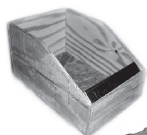
*Family owned and operated -
serving the rabbit & cavy industry for over 30 years!*

Quality Customer Service - Catering to your Specific Needs

Visit us online at
www.pointerhill.com

**Manufacturers of quality cages, carriers,
and galvanized trays. We pride ourselves
on the ability to manufacture your custom cage.**

**5%
Discount**
TO 4-H MEMBERS or
ON SHOW PRE-ORDERS
OVER \$100



The original



- BREEDING UNITS
- CAGES
- CARRIERS
- CROCKS
- HAYS AND FEEDS
- LIXIT WATER BOTTLES
- MEDICATIONS
- NEST BOXES (METAL AND WOOD)
- POINTER HILL EZ TOP FILL BOTTLES
- RABBIT TATT #2
- SUPPLIES (RABBIT/CAVY)
- TRAYS (PLASTIC & GALVANIZED)
- URINE GUARDS



**To request a free product catalog
or for more information:**



Pointer Hill Pet Products
625 Hoffmansville Road
Bechtelsville, PA 19505

HOURS:
Mon-Fri
6:00am - 3:30pm EST

Members of ARBA & ACBA



Toll Free: **888.331.2243**

Phone: **610.754.7830**

Fax: **610.754.7840**



Email: **info@pointerhill.com**

Visit us: **www.pointerhill.com**

Shipments Made Daily
AMERICAN EXPRESS
DISCOVER
VISA
MASTERCARD
Accepted

To visit Pointer Hill
on the web,
use your
smartphone
and scan here →

