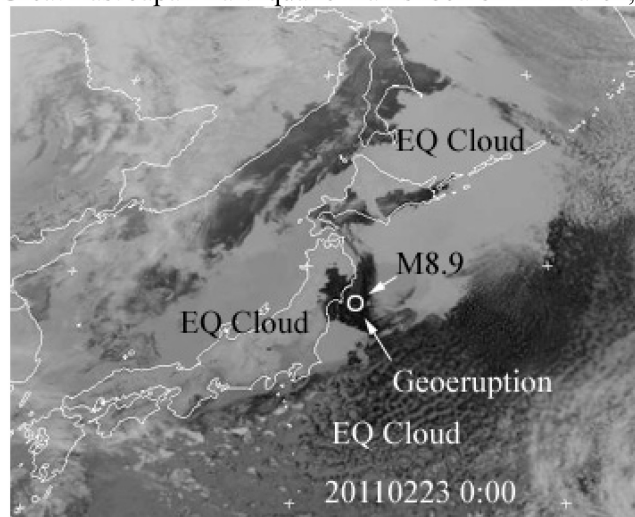

A PRECURSORY GEOERUPTION BEFORE THE DISASTROUS JAPANESE EARTHQUAKE

The following picture is the geoeruption and earthquake cloud which appeared on 23 February 2011 - 16 days before the M9.0 Great East Japan Earthquake mainshock on 11 March, 2011.



Zhonghao SHOU

earthquake.prediction@gmail.com

<http://www.earthquakesignals.com/zhonghao296/images2009/201102230000Jap8.9d.jpg>
