

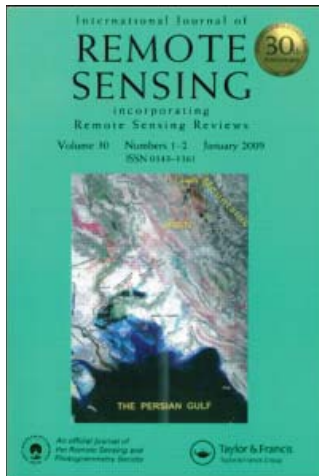
This article was downloaded by: [informa internal users]

On: 18 February 2010

Access details: Access Details: [subscription number 755239602]

Publisher Taylor & Francis

Informa Ltd Registered in England and Wales Registered Number: 1072954 Registered office: Mortimer House, 37-41 Mortimer Street, London W1T 3JH, UK



International Journal of Remote Sensing

Publication details, including instructions for authors and subscription information:

<http://www.informaworld.com/smpp/title-content=t713722504>

CORRIGENDUM

To cite this Article (2009) 'CORRIGENDUM', International Journal of Remote Sensing, 30: 14, 3851

To link to this Article: DOI: 10.1080/01431160903118817

URL: <http://dx.doi.org/10.1080/01431160903118817>

PLEASE SCROLL DOWN FOR ARTICLE

Full terms and conditions of use: <http://www.informaworld.com/terms-and-conditions-of-access.pdf>

This article may be used for research, teaching and private study purposes. Any substantial or systematic reproduction, re-distribution, re-selling, loan or sub-licensing, systematic supply or distribution in any form to anyone is expressly forbidden.

The publisher does not give any warranty express or implied or make any representation that the contents will be complete or accurate or up to date. The accuracy of any instructions, formulae and drug doses should be independently verified with primary sources. The publisher shall not be liable for any loss, actions, claims, proceedings, demand or costs or damages whatsoever or howsoever caused arising directly or indirectly in connection with or arising out of the use of this material.

CORRIGENDUM

In the April 2008 issue of *International Journal of Remote Sensing* 29(7), pp. 1921–1928, we published ‘Cloud anomaly before Iran earthquake’ by Guangmeng Guo and Bin Wang (DOI 10.1080/01431160701373762).

The authors regret that this article failed to adequately reference material from Darrell Harrington and Zhonghao Shou’s earlier work, which identified the link between the Bam earthquake and non-meteorological cloud formations:

HARRINGTON, D. and SHOU, Z., 2005, Bam earthquake prediction and space technology. *Seminars of the United Nations Programme on Space Applications*, **16**, pp. 39–63.

and

SHOU, Z., 2006, Earthquake vapor, a reliable precursor. In *Earthquake Prediction*, S. Mukherjee (Ed.), pp 21–51 (Leiden: Brill – VSP).

Images used in figures 2 and 6 of Guangmeng Guo and Bin Wang’s paper should also be credited to NERC Satellite Receiving Station, Dundee University, Scotland at <http://www.sat.dundee.ac.uk/>

Guangmeng Guo and Bin Wang apologise unreservedly to Darrell Harrington, Zhonghao Shou and Dundee University for their omissions.