

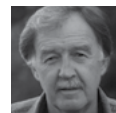
PROGRAM

DAY 1

8:30am - 9:20am

Official Open and Welcome

MC • George Negus, Journalist
Open • Bill Marmion, Minister for Mines and Petroleum,
 Government of Western Australia
Welcome • Steve Knott, Chief Executive, AMMA



GEORGE NEGUS



BILL MARMION



STEVE KNOTT

9:20am - 10:00am

SESSION 1 • Keynote Address

The Hon. John Winston Howard OM AC
 Former Australian Prime Minister John Howard will
 provide a special presentation on economic
 management, workplace relations and industry policy.



JOHN HOWARD

Morning Tea

10:25am - 11:15am

SESSION 2 • Leadership Panel:

Navigating Industry Transition - The People Advantage

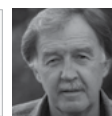
Ian Smith, Managing Director & CEO, Orica
Graeme Hunt, Managing Director & CEO, Transfield Services
Chair • George Negus, Journalist
 Join senior executives from top-tier Australian mining, oil and
 gas companies as they discuss how the corporate leaders in
 our nation's resource industry are navigating a complex and
 evolving project landscape. Interactive panel including Q&A
 from the audience.



IAN SMITH



GRAEME HUNT



GEORGE NEGUS

11:15am - 11:45am

SESSION 3 • People, Projects and Performance: The Bechtel Perspective

Shaun Kenny, President, Bechtel Mining & Metals
Chair • George Negus, Journalist
 Overseeing 50,000 employees delivering \$20bn worth of
 major engineering projects across the world, Bechtel's Presi-
 dent of Mining and Metals, Shaun Kenny, will provide unique
 insight on workforce engagement and project performance.



SHAUN KENNY



GEORGE NEGUS

11:45am - 12:30pm

SESSION 4 • Hydrocarbons Forum: Projects and Productivity in the LNG Sector

Kaye Butler, General Manager Human Resources,
 Chevron Australia
Roland Houareau, Group Manager Employee &
 Industrial Relations, Inpex Australia
Petrina Coventry, Chief Human Resources Officer, Santos
Ian Masson, Vice President Human Resources, Woodside
 Energy
Chair • Allan Ryan, Founder and Executive Director,
 Hargraves Institute
 From Gorgon to Curtis Island, Port Hedland to Port of
 Gladstone – Australia's new wave of natural gas projects
 have delivered thousands of jobs and are setting our nation
 up for decades of economic prosperity. Join senior HR and IR
 executives from the LNG/CSG sectors to discuss where this
 industry is headed and how our country can better compete
 for the next wave of new project investment.



KAYE BUTLER



ROLAND HOUAREAU



PETRINA COVENTRY



IAN MASSON



ALLAN RYAN

DAY 1

Lunch

1:25pm - 1:45pm

SESSION 5 • Part 1:

Outcomes in Workforce Diversity: Leadership

Wayne Aitken, Managing Director, Farstad Shipping (Indian Pacific)
Chair • George Negus, Journalist

As the first maritime operator to be awarded the AWRA Recognised gender diversity stamp, Farstad Shipping is a leader in workforce diversity. Hear from Managing Director Wayne Aitken as he explores strategies, experiences and challenges in creating a diverse workforce culture.



WAYNE AITKEN



GEORGE NEGUS

1:45pm - 2:30pm

SESSION 5 • Part 2:

Outcomes in Workforce Diversity: Practice

Mary Matthews, Organisational Development Senior Officer, Georgiou Group

Lisa Morgan, Group Manager - Diversity and Inclusion, Thies

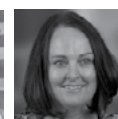
Luke Messer, Group Manager Organisation, MMG

Fiona Rose, Global Diversity Manager, SKM

Implementing gender diversity programs in the workplace is often where the real challenge starts. Hear what practical tools and guidance can help employers increase the participation of women in their respective workplaces and open doors to a new pool of talented and committed employees.



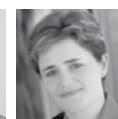
MARY MATTHEWS



LISA MORGAN



LUKE MESSER



FIONA ROSE

Afternoon Tea

2:55pm - 3:05pm

SESSION 6 • Part 1:

Workplace Mental Health Initiative

Kate Carnell, CEO, *beyondblue*

Tim Marney, Mental Health Commissioner, Government of Western Australia

Join AMMA and your industry peers as we launch via video feed an exciting new OHS initiative tackling mental health head-on, breaking down the culture of silence and making a real difference to employee wellbeing across the resource industry.



KATE CARNELL



TIM MARNEY

3:05pm - 3:50pm

SESSION 6 • Part 2:

Employee Wellness Panel: Innovations in Health and Safety

Johnpaul Dimech, CEO, Sodexo Australia and New Zealand

Nicole Ashby, Director, FIFO Families

Dr Melissa Lehmann, Clinical and Organisational Psychologist and National Manager of the Specialist Services Unit Medibank Health Solutions

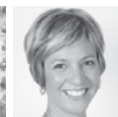
Tracey Inglis, Manager - Injury Management Services - WA/NT, Safety & Environment, Thies

Chair • Tim Marney, WA Mental Health Commissioner, Government of Western Australia

Learn how some of Australia's top employers are not only challenging industry best practice in OHS, but innovating new initiatives improving health, wellbeing and safety to drive productivity and maintain incident-free operations.



JOHNPAIL DIMECH



NICOLE ASHBY



DR MELISSA LEHMANN



TRACEY INGLIS



TIM MARNEY

Gala Dinner | Pre-dinner drinks starting at 6:30pm

1800 627 771 • SUMMIT@AMMA.ORG.AU • WWW.RESOURCEPEOPLE.ORG.AU

CORPORATE PARTNERS • PLATINUM



DAY 2

8:30am - 8:40am

Welcome

MC • **George Negus**, Journalist



GEORGE NEGUS

8:40am - 9:10am

SESSION 7 • Labor's People and Productivity Vision for the Australian Resource Industry

Gary Gray, Shadow Minister for Resources, Australian Labor Party

Brendan O'Connor, Shadow Minister for Employment and Workplace Relations, Australian Labor Party

Introduction • **George Negus**, Journalist



GARY GRAY



BRENDAN O'CONNOR



GEORGE NEGUS

9:10am - 9:30am

SESSION 8 • CEO Magazine's CEO of the year

Kevin Gallagher, CEO, Clough

Chair • **George Negus**, Journalist

Hailed as one of the industry's true leaders for his innovative business management and support of employees through turbulent market conditions. Clough chief executive and 'CEO of the Year' Kevin Gallagher promises to deliver an inspiring address at this year's AMMA Resource People Summit. Gallagher will explore his accomplishments in ensuring Clough's success through a business strategy focused on workforce engagement, people leadership, project execution, cost efficiency and enhanced productivity.



KEVIN GALLAGHER



GEORGE NEGUS

9:30am - 9:55am

SESSION 9 • Keynote Presentation from Fortescue's CEO

Nev Power, CEO, Fortescue Metals Group

Chair • **George Negus**, Journalist



NEV POWER



GEORGE NEGUS

9:55am - 10:25am

SESSION 10 • Restoring the Rule of Law in Construction

Nigel Hadgkiss, Director, Fair Work Building and Construction

Chair • **Henry Skene**, Partner, Seyfarth Shaw Australia

There is no disputing that former ABCC deputy Nigel Hadgkiss is the right man to reign in the lawlessness in the construction industry. Hear how Hadgkiss plans to better regulate construction unions on resource projects and enforce the rule of law.



NIGEL HADGKISS



HENRY SKENE

Morning Tea

10:50am - 11:30am

SESSION 11 • A: Effective Employee Bargaining Campaigns: A Closed Door Forum for AMMA Members

Daniel Mammone, Director, Government Relations, AMMA

Steve Dunstan, Director - West Coast, AMMA

Chair • **Amanda Mansini**, Director Legal & Migration Services, AMMA

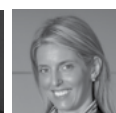
Join AMMA's Director of Legal Services and colleagues in this informative and topical closed-door forum where the opportunities and challenges of workforce bargaining will be explored from end to end.



DANIEL MAMMONE



STEVE DUNSTAN



AMANDA MANSINI

DAY 2

10:50am - 11:30am

SESSION 11 • B: Workforce Planning, Training and Development: Building Productive Capacity

Rebecca Mahony, Training and Development Manager - West, Downer EDI

Narelle Aucote, Senior HR Advisor, Monadelphous

Chair • Janine Temple, Director Training & Development, AMMA

Want to learn how to get the best out of your employees or transition your top talent into leadership roles within your organisation? AMMA's Training and Development sessions are renowned for expert advice on upskilling, workforce development and accessing government funding for on-site customised training.



REBECCA MAHONY



NARELLE AUCOTE



JANINE TEMPLE

11:30am - 12:10pm

SESSION 12 • A: Innovative People Management: Lessons from Employers of Choice

Wayne Gobert, National General Manager - People and Culture, Assetlink Services

Darren Yeoh, Vice President Human Resources, Technip Oceania

Chair • Tara Diamond, Executive Director - Industry Services, AMMA

Learn how to get the most out of your number one asset - your people - as we explore all the latest innovations and practical tools in human resources. Keep ahead of the pack with this specialist HR session featuring Assetlink Services' General Manager for People and Culture, Wayne Gobert.



WAYNE GOBERT



DARREN YEOH



TARA DIAMOND

11:30am - 12:10pm

SESSION 12 • B: Skilled Migration:

Navigating Current Issues and Challenges

Libby Quinn, Department of Immigration and Border Protection

Vaughan Carder, Department of Immigration and Border Protection

Jules Pedrosa, Manager Migration Services, AMMA

Chair • Lisa Matthews, Senior Workplace Policy Adviser, AMMA

Join AMMA's Manager of Migration Services and representatives from the Department of Immigration & Border Protection to learn about the impact of the latest developments in skilled migration such as labour market testing and the impending offshore resources activity visa.



LIBBY QUINN



VAUGHAN CARDER



JULES PEDROSA



LISA MATTHEWS

Lunch - Special Guest Speaker Tim Grogan, LinkedIn

12:10pm - 1:10pm

Tim Grogan, Head of Talent Solutions in Australia for the global professional social networking platform LinkedIn, will deliver a keynote addressing talent solutions in the Australian resources sector as well as key trends and forecasts, innovative solutions and best practices.



TIM GROGAN

DAY 2

1:10pm - 1:30pm

SESSION 13 • Australian Government: Boosting Jobs and Investment through a Globally Competitive Resource Industry

Senator Michaelia Cash, Assistant Minister for Immigration and
Border Protection, Women, Australian Federal Government

Introduction • George Negus, Journalist

When it comes to providing top political decision makers for real
dialogue on what our government is doing to make the resource
industry a better place to invest, do business and employ
people - nobody brings you access like AMMA. Hear from
Assistant Minister for Immigration and Border Protection Michaelia
Cash as we explore policy, deregulation and future plans to
maintain the strength of Australia's resource industry through
skilled migration.



SEN. MICHAELIA
CASH



GEORGE NEGUS

1:30pm - 2:00pm

SESSION 14 • Mining Forum: People and Productivity in the Mining Sector

Peter Thomas, Director of Shared Services, FMG

Peter Baughan, General Manager - Human Resources,
Minara Resources

Chair • Allan Ryan, Founder and Executive Director,
Hargraves Institute



PETER THOMAS



PETER BAUGHAN



ALLAN RYAN

2:00pm - 2:20pm

SESSION 15 • Deloitte Business Outlook: Positioning for the Next Wave of Prosperity

Matt Judkins, Partner, Deloitte Access Economics

Introduction • George Negus, Journalist

Join Perth's leading economist Matt Judkins to explore what's
in store for Australia's resource employers in the short, medi-
um and long term. What do the big numbers and forecasts
really mean for people, projects and productivity in our sector?



MATT JUDKINS



GEORGE NEGUS

2:20pm - 3:00pm

SESSION 16 • High Performance and Productivity: Management Lessons from the Sporting World

Steve Rosich, Chief Executive Officer, Fremantle Dockers

Jason Brewer, Chief Executive Officer, Perth Glory

Justin Langer, Cricketer

Chair • George Negus, Journalist



STEVE ROSICH



JASON BREWER



JUSTIN LANGER



GEORGE NEGUS

Tickets are limited. Reserve yours today.

Phone 1800 627 771 or visit www.resourcepeople.org.au