

STRICKFADEN PARK
RECREATIONAL DEVELOPMENT
BELL AVENUE, PERKINS TOWNSHIP, ERIE COUNTY, OHIO
SPRING 2010

PIPE CREEK

APPROVED FOR
CONSTRUCTION
JULY 2008
(DASHED AREA)

CAMPBELL STREET

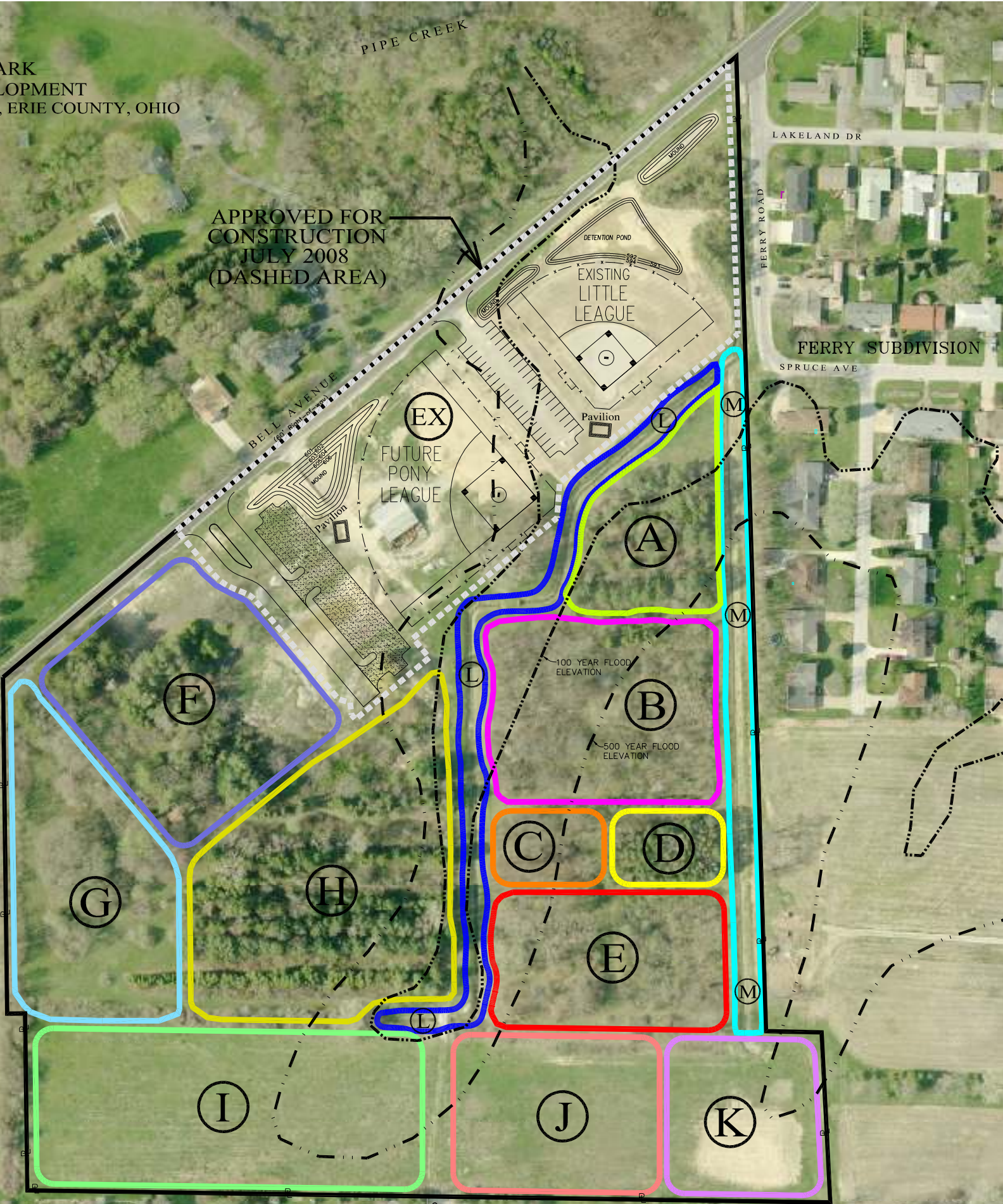
STONEWOOD ESTATES

STONEWOOD DRIVE

LAKELAND DR

FERRY ROAD

FERRY SUBDIVISION
SPRUCE AVE



CONCEPTUAL AREA DATA

- (A) 1.0± ACRES
EXISTING - MATURE WOODED AREA
CONCEPTUAL - AREA TO REMAIN WOODED
OPTIONS - GAZEBO AREA / CELEBRATION SPACE
- (B) 1.9± ACRES
EXISTING - BRUSH / TREES / NURSERY STOCK
CONCEPTUAL - BASEBALL DIAMOND
- (C) 0.3± ACRES
EXISTING - BRUSH / TREES / NURSERY STOCK
CONCEPTUAL - RESTROOM / CONCESSION AREA
- (D) 0.3± ACRES
EXISTING - MATURE WOODED AREA
CONCEPTUAL - AREA TO REMAIN UNDISTURBED
- (E) 1.5± ACRES
EXISTING - TREES / NURSERY STOCK
CONCEPTUAL - BASEBALL DIAMOND
- (F) 2.1± ACRES
EXISTING - WOODED/OPEN SPACE/NURSERY STOCK/STOCKPILES
CONCEPTUAL - PLAYGROUND / BASEBALL DIAMOND
- (G) 1.9± ACRES
EXISTING - TREES / NURSERY STOCK / LOW AREA
CONCEPTUAL - MAINTENANCE GARAGE / OFFICE / STORAGE/LITTLE LEAGUE DIAMOND
- (H) 3.0± ACRES
EXISTING - TREE ROWS
CONCEPTUAL - PARKING (GREEN CONSIDERATION / GRASS)
MAINTAIN MATURE TREES SHADE AREAS
- (I) 2.7± ACRES
EXISTING - OPEN GRASS FIELD
CONCEPTUAL - OPEN SPACE / SOCCER FIELDS
- (J) 1.5± ACRES
EXISTING - OPEN GRASS FIELD
CONCEPTUAL - OPEN SPACE / SOCCER FIELDS
- (K) 1.1± ACRES
EXISTING - OPEN GRASS FIELD
CONCEPTUAL - SURCHARGE DETENTION BASIN
- (L) 0.8± ACRES
EXISTING - STRICKFADEN DITCH
CONCEPTUAL - IMPROVE OPEN CHANNEL DESIGN
DEVELOP WETLAND AREA & HABITAT
- (M) 0.8± ACRES
EXISTING - EXISTING DITCH
CONCEPTUAL - EXISTING DITCH TO REMAIN
CONTAINS COUNTY SANITARY SEWER LINE
- (EX) EXISTING BALL DIAMOND
APPROVED FOR CONSTRUCTION IN JULY 2008
AREA = 6.4± ACRES

EXISTING
- ONE BASEBALL DIAMOND & PARKING LOT
CONSTRUCTED
- EXISTING BUILDING & DRIVE REMAIN AT THIS TIME

PROPOSED
- EXISTING BUILDING TO BE REMOVED & SECOND
BASEBALL DIAMOND CONSTRUCTED ALONG WITH
PROPOSED BOULEVARD ENTRANCE & PARKING LOT

FEATURES NOT SHOWN
- WALKING PATH & NATURE TRAIL - TO BE IMPROVED
THROUGHOUT THE PARK DEVELOPMENT WITH A MEANDERING
ALIGNMENT.
- WALKING PATH DEVELOPED WITH RECYCLED ASPHALT FROM
ROADWAY MILLING OPERATIONS IN THE TOWNSHIP.