

TG-A7036  
**BIANCA**

Tunic

*Pattern Preparation*

WE CHOOSE TO PRINT OUR PATTERNS ON HIGH QUALITY  
WHITE PAPER STOCK TO ENSURE YOU HAVE LONG USE.

PREPARE YOUR PATTERN -

WE TRY TO KEEP ALL PATTERN PIECES INTACT, BUT ON OCCASION  
WE NEED TO CREATE JOIN LINES. SIMPLY CUT AND TAPE THE JOIN  
LINES TOGETHER IF NECESSARY. IT'S THAT SIMPLE.

ONCE ALL TAPED TOGETHER SELECT THE SIZE YOU WISH TO MAKE,  
SEE OUR SIZE CHART AND CUT OUT YOUR PAPER PATTERN PIECES.

S I Z I N G			
	US	UK	EUR
XS....	2	4-6	34
S....	4-6	8-10	36-38
M.....	8-10	12-14	40-22
L.....	12-14	16-18	44-46
XL....	16-18	20-22	48-50
2X....	20-22	24-26	52-54
3X...	24-26	28-30	56-58

*Materials*

LIGHT TO MEDIUM WEIGHT FABRIC  
WE USE LIGHT AND MEDIUM LINEN FOR THIS  
BEAUTY

+

ONE LARGE BUTTON (1 TO 1-1/2")  
TWO SMALL CUFF BUTTONS (3/8")

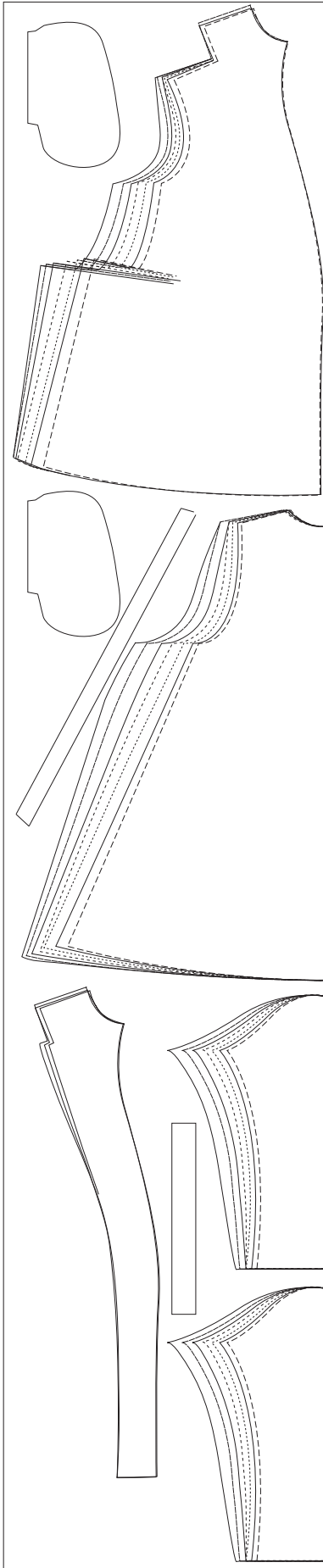
FABRIC:

54/55" WIDE (140CM WIDE)  
ALL SIZES ..... 3-3/4 YARDS  
OR 3.5 METERS

## Cutting

ALL OF OUR PATTERNS INCLUDE  
THE SEAM ALLOWANCE,

BIANCA tunic includes FRONT and BACK panels, pockets, front facing, sleeves and binding. Cut the back and front panels as shown in the diagram, BACK is cut along the fold of the fabric. The FRONT panel is cut as shown - 2 fronts. Cut 4 pockets; 2 strips on the bias about 1-1/2" (or 4cm) wide x 26" (or 66cm) long. Cut the front facing, two sleeves along the fold of the fabric and two cuff binding strips about 2" (or 5cm) wide x 16" (or 40cm) long.



## Sewing Instructions

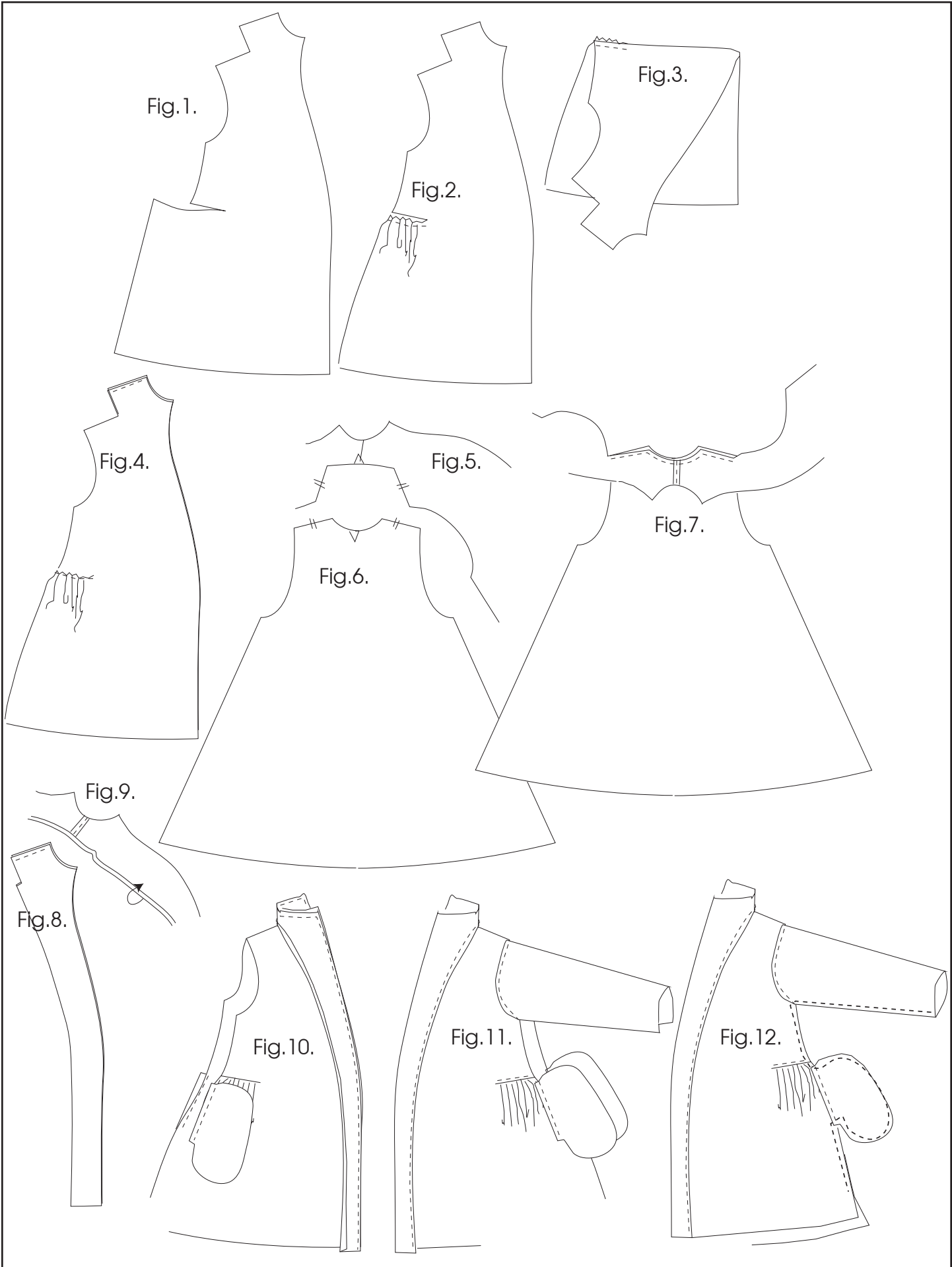
NOTE: ALL SEAMS ARE 3/8"  
UNLESS OTHERWISE STATED!

### BIANCA TUNIC

- Refer to Fig.1. your fronts should resemble this. Gather between the marked dots on the pattern piece along the longer bottom edge. Gather up this edge to equal the top edge as shown in fig.2.
- Pin, right sides together as in fig.3. and stitch the opening closed as shown. Repeat on the other side front.
- Place the two front panels together, right sides facing as in fig.4. Stitch across the top collar panel as shown. When opened up along the back collar you should have something that resembles fig. 5. Right sides together, match the center line of the front panels onto the center mark at neck of the back panel. Fig.6. Match shoulder edges as shown, see fig.7. Stitch back neck and shoulders as shown in fig.7.
- Place the two front facing panels together, right sides facing and also stitch the back edge as shown in fig.8. Press. Also press the inside raw edge 1/4" onto the wrong side of the fabric, shown in fig.9.
- Place the front facing panel onto the front edge and back collar of the tunic as shown in fig.10. Match the edges and pin. Right sides facing. Stitch the outer edge as shown in fig.10. Clip the corners and turn the facing onto the wrong side of the tunic as shown in fig.11. Stitch the facing down as shown.
- Add the pockets to the tunic as shown in fig.10. First pin the front pockets in place onto the front panels, refer to the pattern piece for placement.

+ CONTINUED

- Pin the under arms together, and mark onto the back side edge where the back pockets should go, referencing the position of the front pocket. See fig.10. Right sides facing. Stitch pockets onto sides.
- Pin sleeves in place, center mark of sleeve shoulder to shoulder seam of the tunic, see fig.11. Stitch both in place, easing as you go. Press.
- Pin under arms, under sleeves and sides seams, and around the pockets as shown in fig.12. Stitch, pivoting at pocket corners as shown. STOP 3" from the bottom edge of the front panels at sides. Press.
- Note the back panel is slightly longer than the front at the side seams.
- Using a strip of the bias binding you precut, pin right sides facing onto the side opening slit as shown in fig.13. Open up the slit and pin strip along. Stitch as shown. Press the seam allowance upward and way from the tunic, and press the raw edge of the binding over to its wrong side 1/4" as shown in fig.14. Roll the binding onto itself, see fig. 15. Stitch down.
- Pin the under arms together, and mark onto the back side edge where the back pockets should go, referencing the position of the front pocket. See fig.10. Right sides facing. Stitch pockets onto sides.
- Pin sleeves in place, center mark of sleeve shoulder to shoulder seam of the tunic, see fig.11. Stitch both in place, easing as you go. Press.
- Pin under arms, under sleeves and sides seams, and around the pockets as shown in fig.12. Stitch, pivoting at pocket corners as shown. STOP 3" from the bottom edge of the front panels at sides. Press.
- Note the back panel is slightly longer than the front at the side seams.
- Using a strip of the bias binding you precut, pin right sides facing onto the side opening slit as shown in fig.13. Open up the slit and pin strip along. Stitch as shown. Press the seam allowance upward and way from the tunic, and press the raw edge of the binding over to its wrong side 1/4" as shown in fig.14. Roll the binding onto itself, see fig. 15. Stitch down. Repeat on other side.
- Finish the hem of the Bianca by making a simple rolled hem. Roll the edge 1/4" onto the wrong side and press. Repeat and then stitch down. Press.
- Using the straight cut binding, bind the sleeve cuffs as you did the side slits.
- Make a narrow button loop strip from the bias cut binding. Fold each long strip onto the wrong side along the long edges - then fold the strip in half lengthwise, press and stitch.
- Cut 2.5" ( or 6.5 cm ) length, and fold in half. Pin on the inside of the right front panel as shown in fig.17. Pin the raw edges under and stitch in place.
- Place the tunic onto a flat surface and place the front panels in position, mark where the button will be placed as shown in fig.16. To ensure a good fit on your body, try the garment on to check button placement. Stitch button in place.
- TIP to secure the button, I use a small piece of fabric folded into a tiny square, then place this onto the inside of the button placement and stitch button through all layers.
- Make the cuff loops the same and reference fig.18. Make a small pleat on back side of the sleeve, and stitch a small loop in place. Make another small pleat 2" away and stitch button in place.



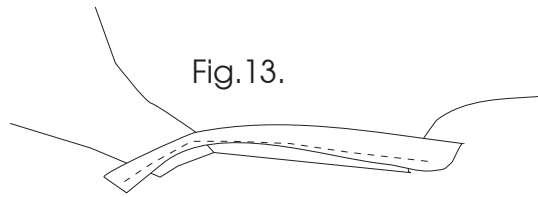


Fig.13.

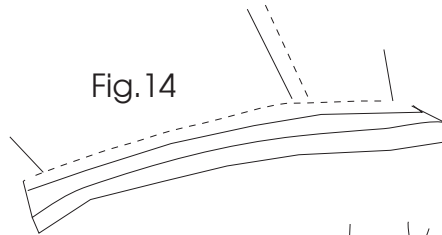


Fig.14

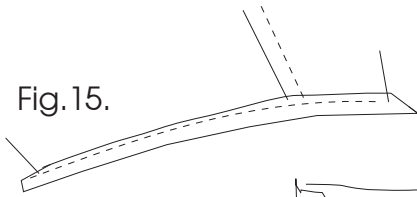


Fig.15.

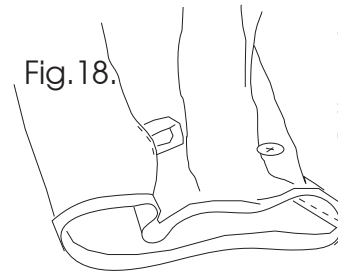


Fig.18.

© tina givens

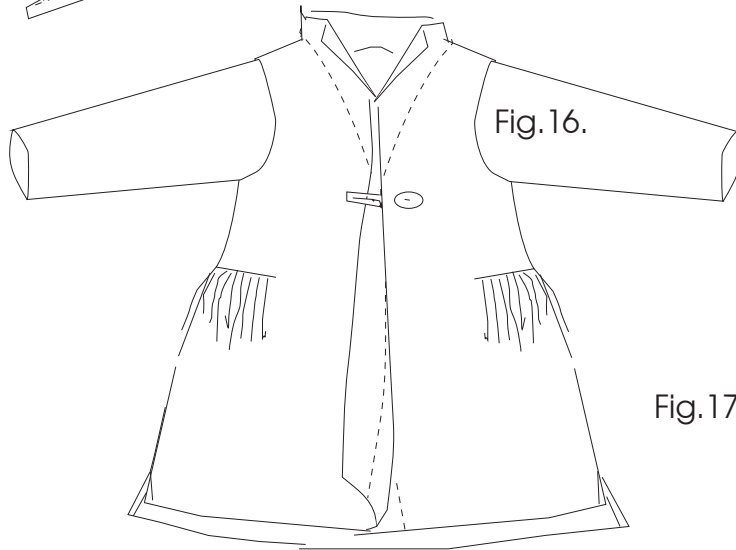


Fig.16.

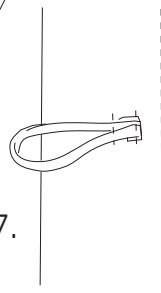


Fig.17.

You have purchased this sewing pattern by Tina Givens Design for personal purposes. No part of this pattern should be duplicated or reproduced for any reason. We want you to create this garment for your own personal use. Do not share this sewing pattern with others. This is the honor code of Sew Tina Givens and Tina Givens, llc.