

Smart Growth *for* Dallas

*Data-driven decisions for the future of Dallas'
parks, open spaces, and green infrastructure*

Dallas Park and Recreation Board
March 10, 2016



Agenda

I. Welcome and Introductions

II. Program Overview

III. Live Demo: Decision Support Tool

*The Trust for Public Land Climate-Smart Cities:
"Healthy, Connected Chattanooga"*

IV. Community Engagement

*buildingcommunityWORKSHOP:
People Organizing Place (POP)*

V. Urban Heat Island

The Texas Trees Foundation

VI. How can this be used in Dallas?

VII. Questions and Discussion



I. WELCOME & INTRODUCTIONS

About The Trust for Public Land



The **Trust for Public Land** works across the country to create new parks and protect land for people, ensuring healthy, livable communities for generations to come.

Since our founding in 1972, we've created and protected more than 5,000 special places across the country. More than 7 million people live within a 10-minute walk of a place that we have created or protected. We have helped generate nearly \$60 billion in public funding for parks and natural areas through ballot measures supported by nearly 100 million voters in 37 states.

About Our Partners



The **buildingcommunityWORKSHOP** is a Texas based nonprofit community design center seeking to improve the livability and viability of communities through the practice of thoughtful design and making. We enrich the lives of citizens by bringing design thinking to areas of our city where resources are most scarce.




The Texas Trees Foundation preserves, beautifies, and expands parks and other public natural green spaces, public streets, boulevards, and rights-of-way by planting trees and encouraging others to do the same through educational programs that focus on the importance of building and protecting the “urban forest” today as a legacy for generations to come.

II. PROGRAM OVERVIEW

Smart Growth for Dallas

WITH A GROWING
POPULATION AND
BOOMING ECONOMY,
DALLAS STANDS ON
THE CUSP OF A NEW
ERA IN ITS HISTORY.



Through optimism and collaboration,
our city is busy
re-creating
our public spaces in the most
extraordinary
ways imaginable.

BUT CHALLENGES STILL
REMAIN...

BUT CHALLENGES STILL REMAIN...

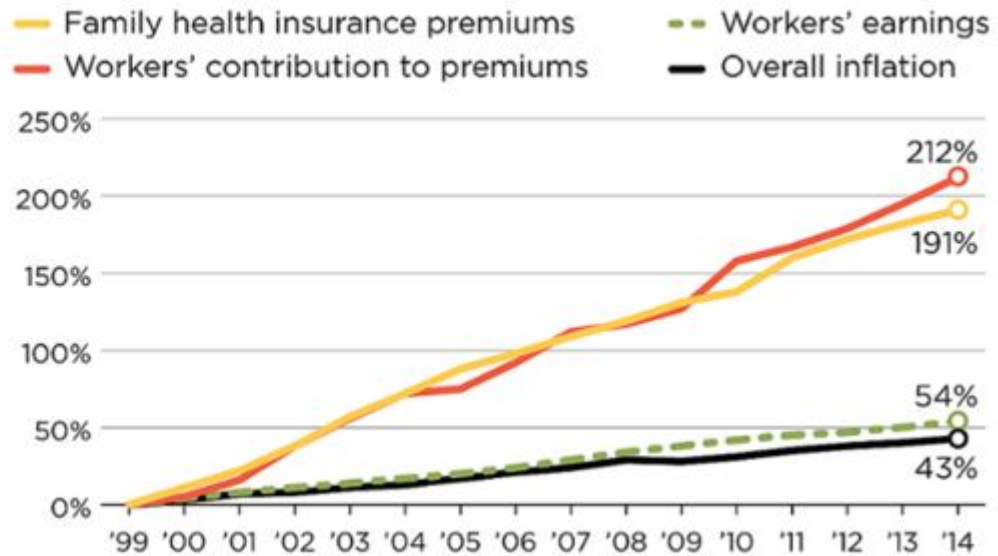
The Dallas Morning News

Texas workers' health insurance costs near highest in nation

Galloping U.S. health care costs

Cumulative increases in health insurance premiums, workers' contributions to premiums, inflation, and workers' earnings, 1999-2014

SOURCE: Kaiser/HRET Survey of Employer-Sponsored Health Benefits, 1999-2014; Bureau of Labor Statistics, Consumer Price Index, U.S. City Average of Annual Inflation (April to April), 1999-2014; Bureau of Labor Statistics, Seasonally Adjusted Data from the Current Employment Statistics Survey, 1999-2014 (April to April)



THE TEXAS TRIBUNE

In DFW, Struggle to Save Water and Prepare for Growth



The Dallas Morning News

Dallas officials to get update on bike lanes, 'complete streets' efforts



2011 File Photo/David Woo

Lowest Greenville was the site of one of the most notable "complete streets" redos. The number of lanes has dropped, parking has been added, sidewalks widened and crosswalks enhanced.

TexasMonthly

Boom With A View

THE PERIL AND PROMISE OF BEING ONE OF THE FASTEST-GROWING CITIES IN TEXAS.

The Dallas Morning News

Poverty is eating at Dallas' core

DALLAS
BUSINESS JOURNAL

\$1B 'Plan for Growth' in South Dallas



Portion of Loop 12 to be closed for a week after floods



Flooding in Dallas. Friday, May 29, 2015. (Photo: WFAA)

Dallas' green assets offer
cost-effective and unique
strategies for addressing
the city's biggest
economic
social
and **ecological**
challenges of today

WITH DALLAS' GROWTH
ONLY ACCELERATING,
NOW IS THE TIME TO
LAY THE FRAMEWORK
FOR SMART, DATA-
DRIVEN DECISIONS
ABOUT OUR CITY'S
FUTURE.

Introducing:

Smart Growth *for* Dallas

*Data-driven decisions for the future of Dallas'
parks, open spaces, and green infrastructure*



TEXAS TREES
FOUNDATION

Key Deliverables

*Community
Engagement*

*Identification of High-
Priority Parcels*

*Interactive Decision
Support Tool*

*Feasibility Study for
Demonstration Project*

Building on local success...

In collaboration with bcWORKSHOP, Texas Trees Foundation, and others, we developed *Smart Growth for Dallas* to be the “next step” that continues the work already underway in Dallas.

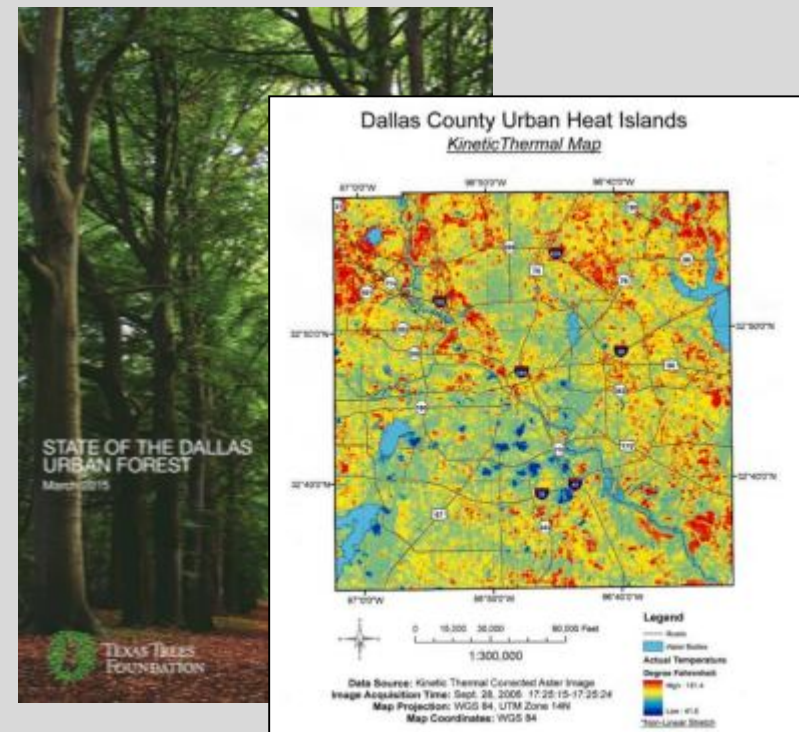
bcWORKSHOP

Race and the Control of Public Parks



Texas Trees Foundation

State of the Dallas Urban Forest



...using a proven framework.

Smart Growth for Dallas deploys The Trust for Public Land's innovative **Climate-Smart Cities** methodology in our local context. This program uses four strategies to help cities improve their climate resiliency:



We've successfully deployed this program in cities across the country, including:

- Chattanooga, TN
- Boston, MA
- Boston, MA
- New York, NY
- Los Angeles, CA
- Kirkland, WA

Community Engagement

- **COMMUNITY MEETINGS**

Series of large and small-format meetings across the city to frame objectives, gather non-GIS data, and share results of program.

- **TECHNICAL ADVISORY COMMITTEE**

Composed of representatives from the project partners, City of Dallas staff, and community stakeholders. Will provide expert input regarding planning objectives, data sources, and priorities.

- **STORY WEBSITE**

Interactive mapping website of Dallas' parks, open spaces, and green assets. Will share results of Smart Growth for Dallas in a variety of formats, including videos featuring Dallas residents and park users.



GIS-Based Analysis & Mapping

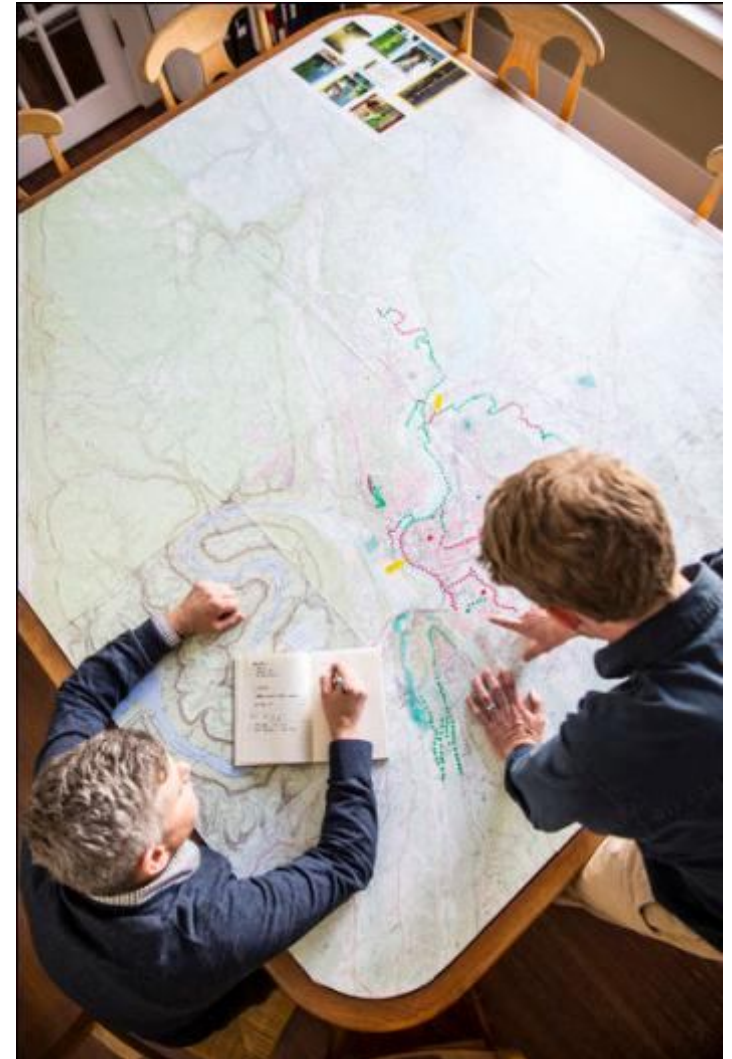


- IDENTIFY HIGH-PRIORITY PARCELS
 - City-scale map identifying areas of high-opportunity, based on analysis of triple-bottom line objectives.
 - List of specific high-priority parcels that meet criteria for acquisition or green infrastructure intervention.
 - Economic valuation of parcels identified in report will be available for a select number of parcels
- DECISION SUPPORT TOOL
 - Interactive web-based platform to provide customizable map-based analysis of land in Dallas, based on identified economic, social, and ecological objectives.
 - Provides extensive data and priority modeling results at the parcel level
 - Users may identify high-value parcels, analyze parcels against spatial data, and make individual parcel reports



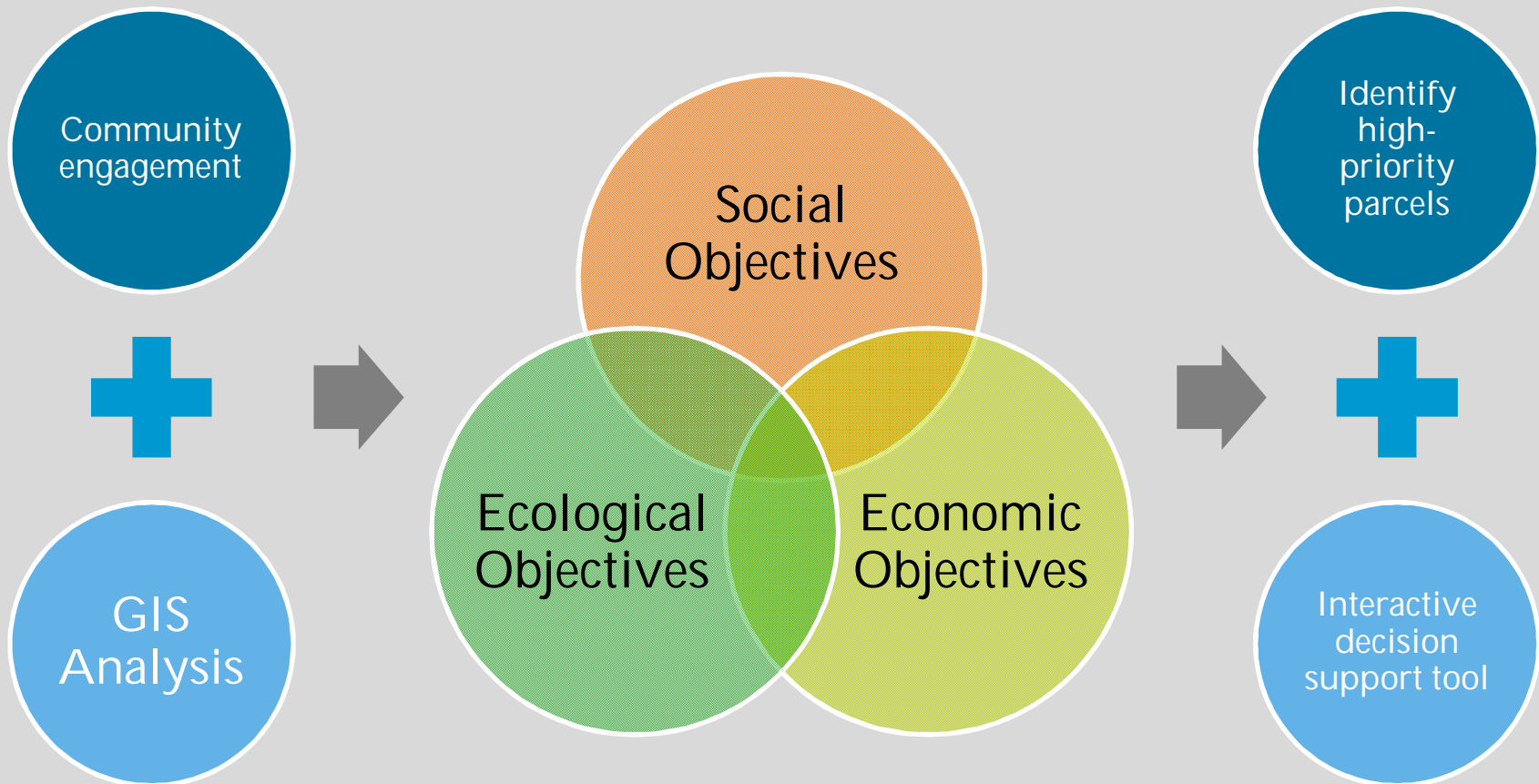
Demonstration Project Feasibility Study

- **A PLAN TO MOVE FORWARD**
With the results of the GIS analysis in-hand, we'll contribute our expertise in project design and development, green infrastructure planning, real estate, and fundraising to help implement on-the-ground smart growth strategies.



Our “Triple Bottom Line” Strategy

Using **community engagement** and **GIS analysis** to optimize future green asset investments based on **economic, social, and ecological** objectives



Ecological Objectives

- **ABSORB**

Identify high-priority areas where parks, open space, and green infrastructure have potential to absorb stormwater and improve water quality in our creeks, lakes, and the Trinity River

- **COOL**

Work with The Texas Trees Foundation & Georgia Tech to identify priority areas where heat island has a disproportionate effect on vulnerable populations

- **PROTECT**

Identify optimum locations for additions to green buffers along the Trinity River and its tributaries, improving flood protection and reducing flood risk

Social Objectives

- **ACTIVATE**

Analyze current strengths and gaps in park facility usage and activation, to identify targets for future investment of green assets.

- **CONNECT**

Identify priority locations for deployment of green assets to improve connectivity between parks, trails, bike lanes, transit networks, residential, and employment centers.

- **EDUCATE**

Identify education campuses with need for increased green space or park access.

Social Objectives *(continued)*

- EQUITY

Identify opportunities for green asset investments to reduce barriers between social groups, improve park access for vulnerable and underserved populations, and make Dallas' parks and open space more equitable.

- HEALTH

Identify highest priority neighborhoods for increased access to active recreation features for city residents, supporting more active and healthy lifestyles.

Economic Objectives

- RECREATION VALUE

Use a survey of residents and GIS analysis to quantify the economic value of recreation benefits that may be provided by creating a park on a specific parcel of land.

- HEALTH VALUE

Calculate the economic value of medical care cost savings that may be realized by Dallas residents through their likely usage of a new park.

- PROPERTY VALUE

Calculate the added market value that the creation of a park could bring to existing nearby residential properties.

III. LIVE DEMO

*“Healthy Connected Chattanooga”
Decision Support Tool*

IV. COMMUNITY ENGAGEMENT

buildingcommunityWORKSHOP

Community Engagement

- Citywide Community Engagement
 - Informing the broader community of project process, objectives, schedule, & opportunities for participation
 - Collect information to inform the filtering of prioritized new park and park redevelopment opportunities in Phase 1
- Seven meetings
 - Spread across the city, guidance from partners and DPARD on locations
- Report on findings
 - Identification of new GIS data needed for Phase 2, guidance for the Technical Advisory Committee



Community Engagement

- Local Community Engagement:
 - Focused to gather information not captured in GIS analysis or not yet considered for GIS analysis
 - Gather stories about the relationship between parks and neighborhoods
- 20 meetings
 - Spread across the city with a variety of audiences: neighborhood groups, friends of parks groups, park users, Parks Department staff, service providers
- Report on findings
 - Identification of new GIS data needed for Phase 2, guidance for the Technical Advisory Committee



Citywide Public Presentation

- Share the findings of the program
- Seven meetings
 - Spread across the city in similar locations to the launch of the program
- Public website
 - Share the process and results in an accessible manner
 - Inform on how the program results are implemented

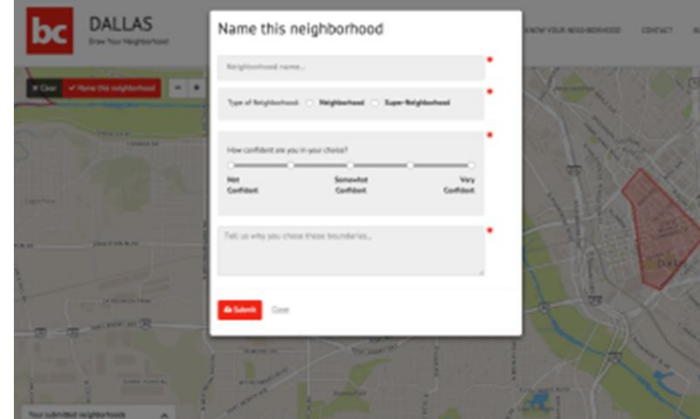
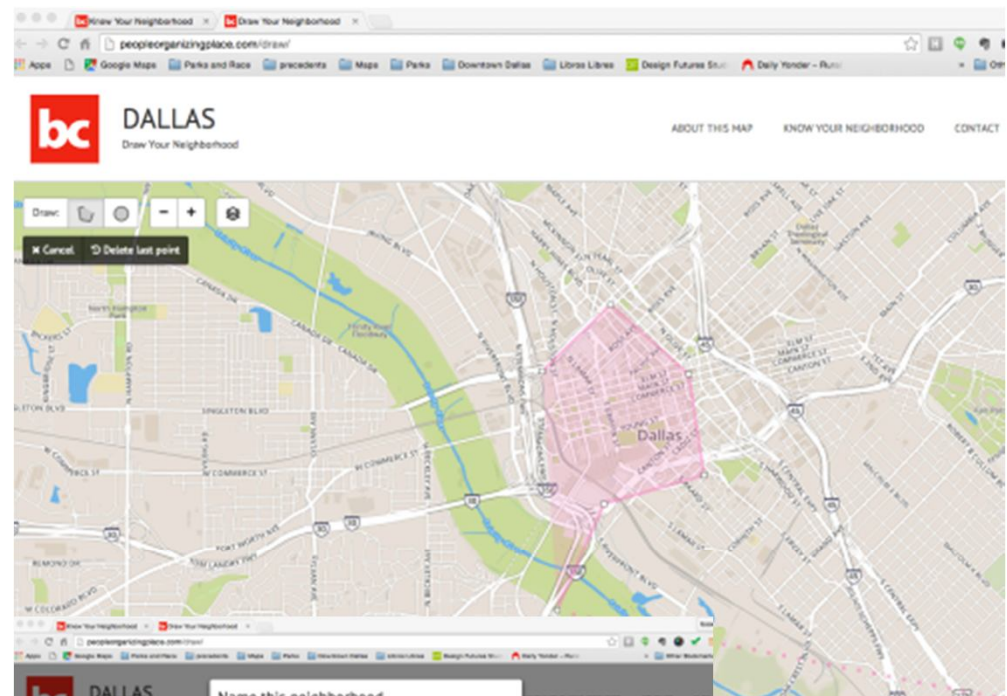
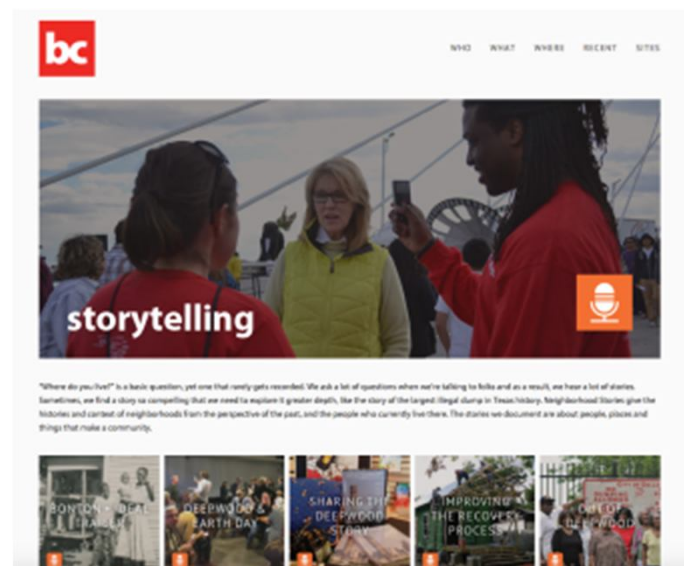
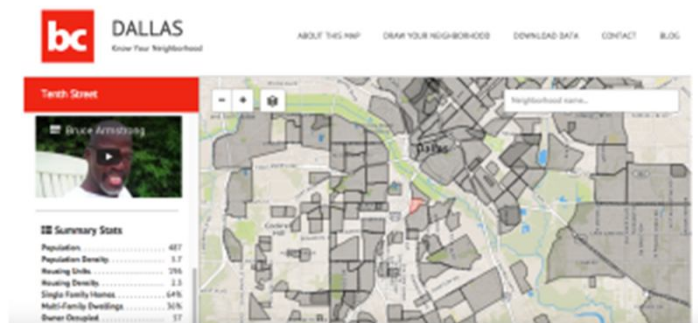
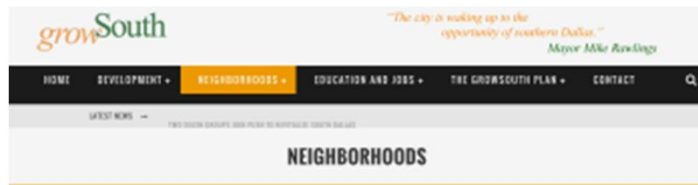


Storytelling

- Short Film on the program and process
 - Reporting our and sharing stories
- Neighborhood Stories
 - Share stories about the connections between parks and neighborhoods, either importance
- People Organizing Place website of Dallas Parks
 - Share park features, stories, Friends Groups, etc.
 - Mapping new or desired park features



Storytelling – peopleorganizingplace.org



V. URBAN HEAT ISLAND

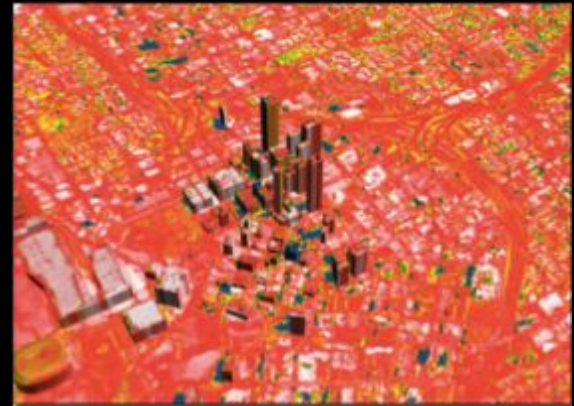
The Texas Trees Foundation



Green is the New Black: Managing Rising Heat Trends in Dallas

Matt Grubisich
Texas Trees Foundation
www.texastress.org

anomaly



risk



response



Drivers of the urban heat island

1. Loss of natural vegetation



2. Replacement of vegetation with impervious materials

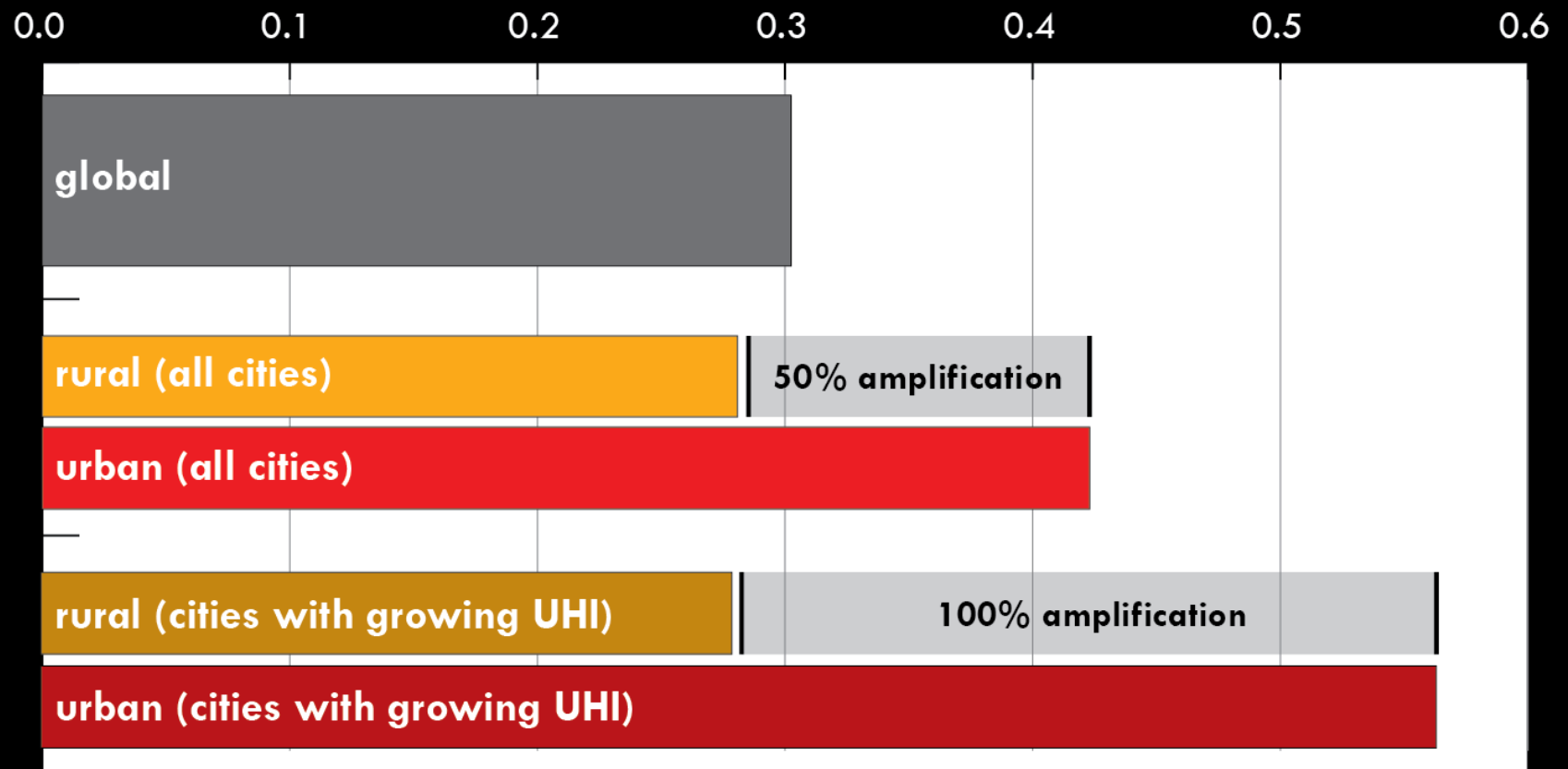


3. Waste heat from vehicles, industry, building air conditioning



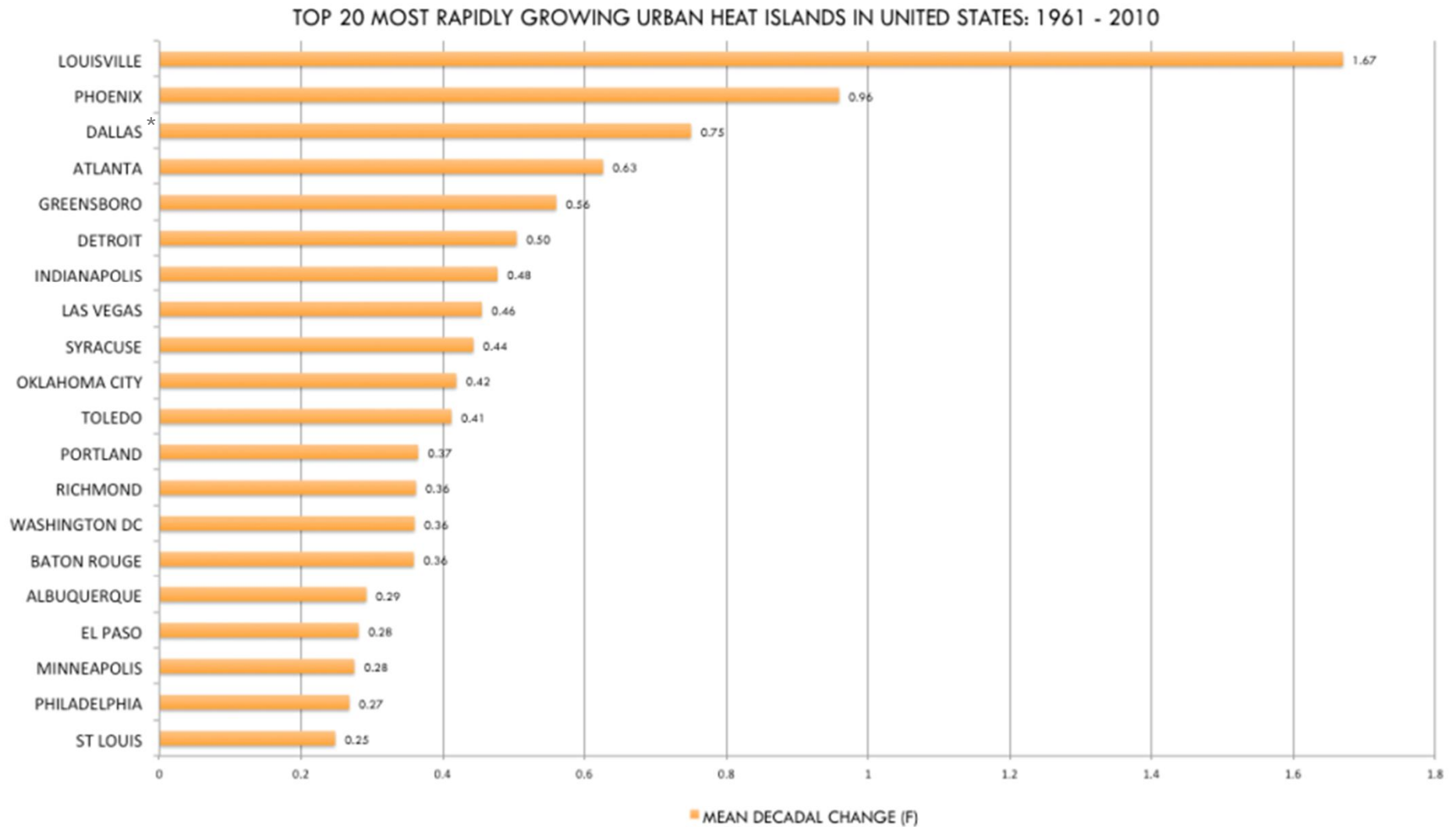
4. Trapping of heat by building "canyons"





global vs. urban rates of warming (°F/decade): 1961-2010

Urban warming rankings



SOURCE: URBAN CLIMATE LAB, GEORGIA INSTITUTE OF TECHNOLOGY

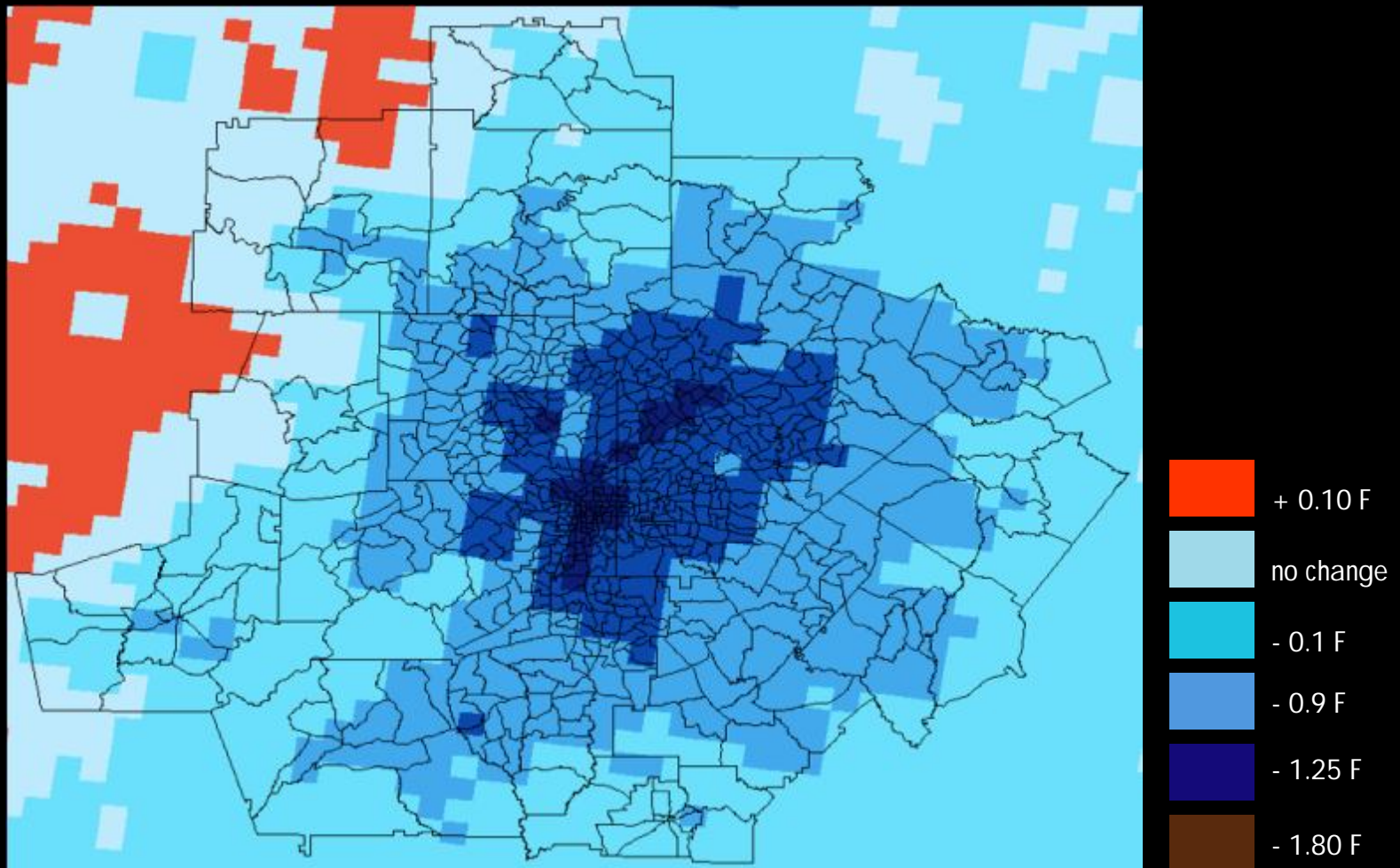
warming in excess of rural trend (°F/decade)

Climate-responsive design

Jason Vargo



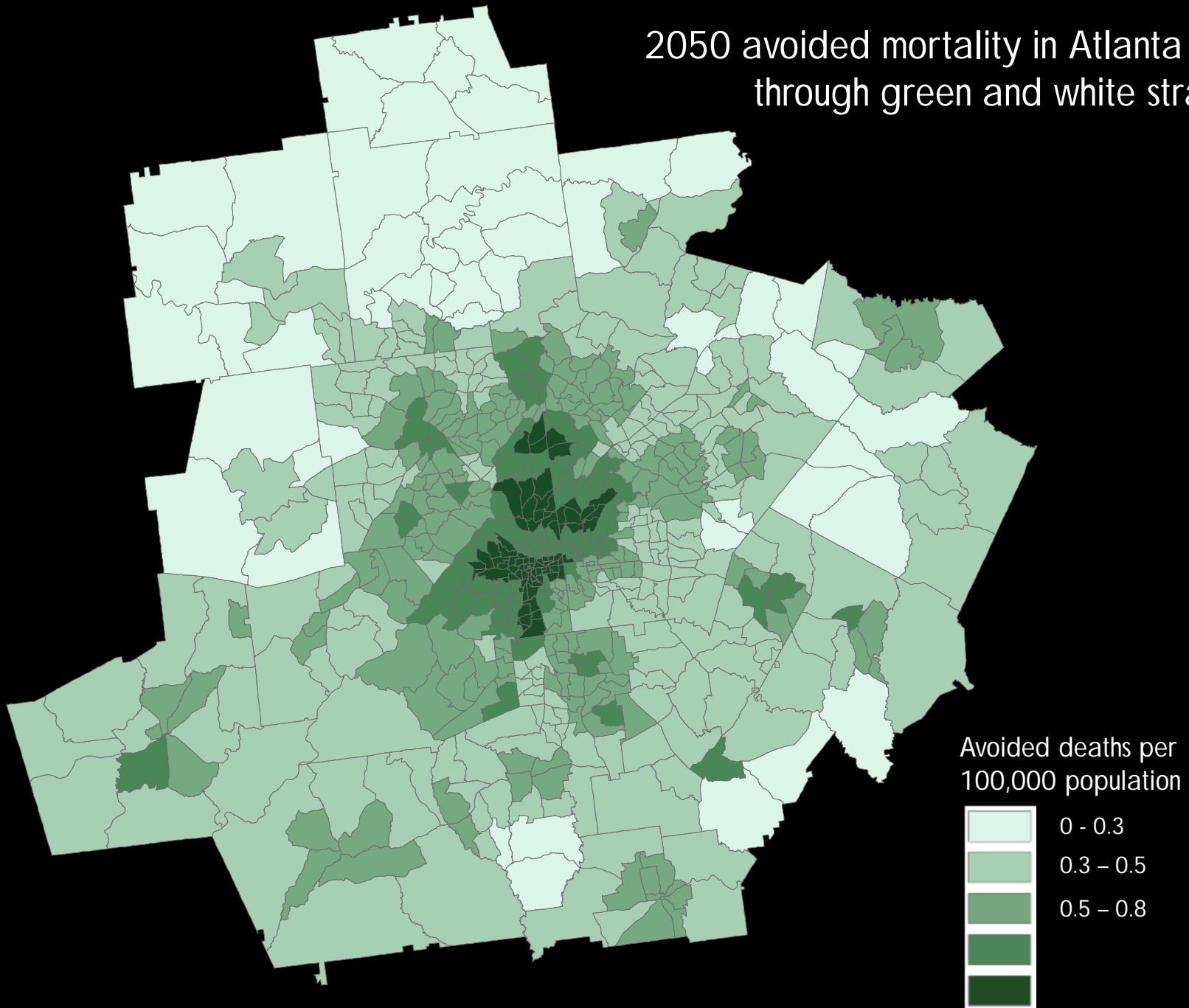
Temperature change from trees and green roofs



New green spaces & green roofs

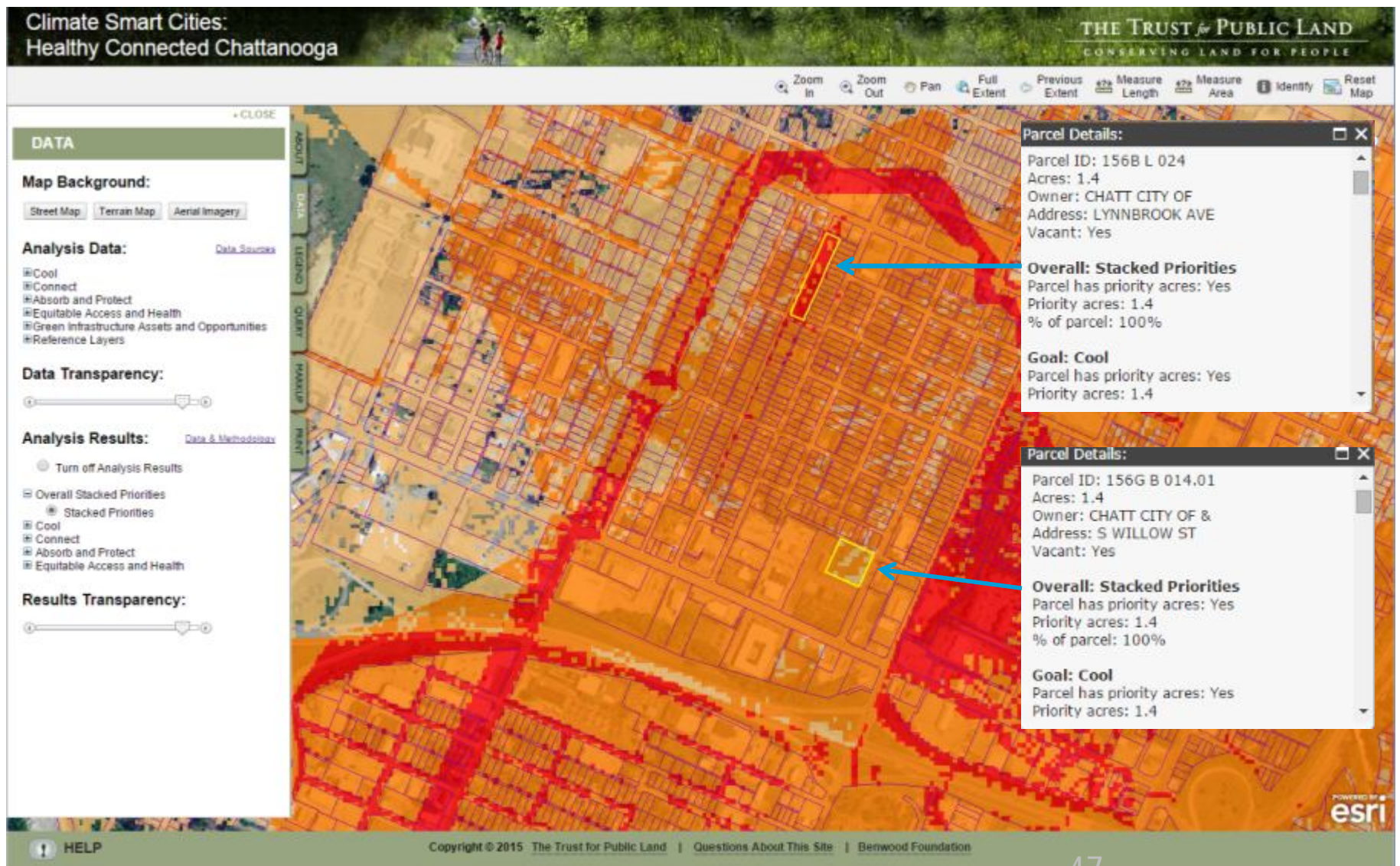


2050 avoided mortality in Atlanta Region through green and white strategies

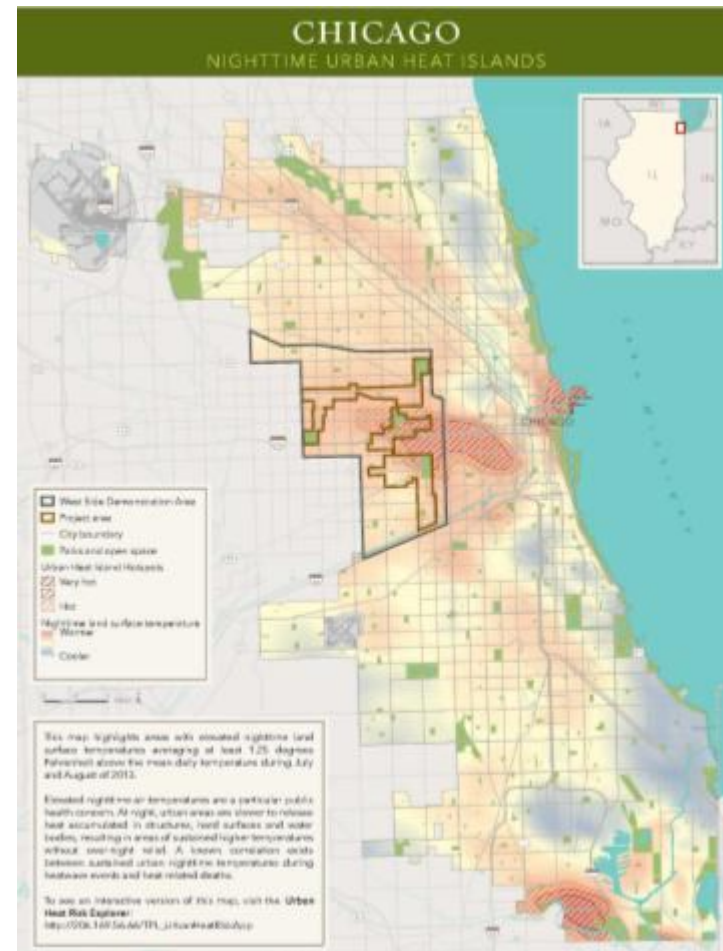
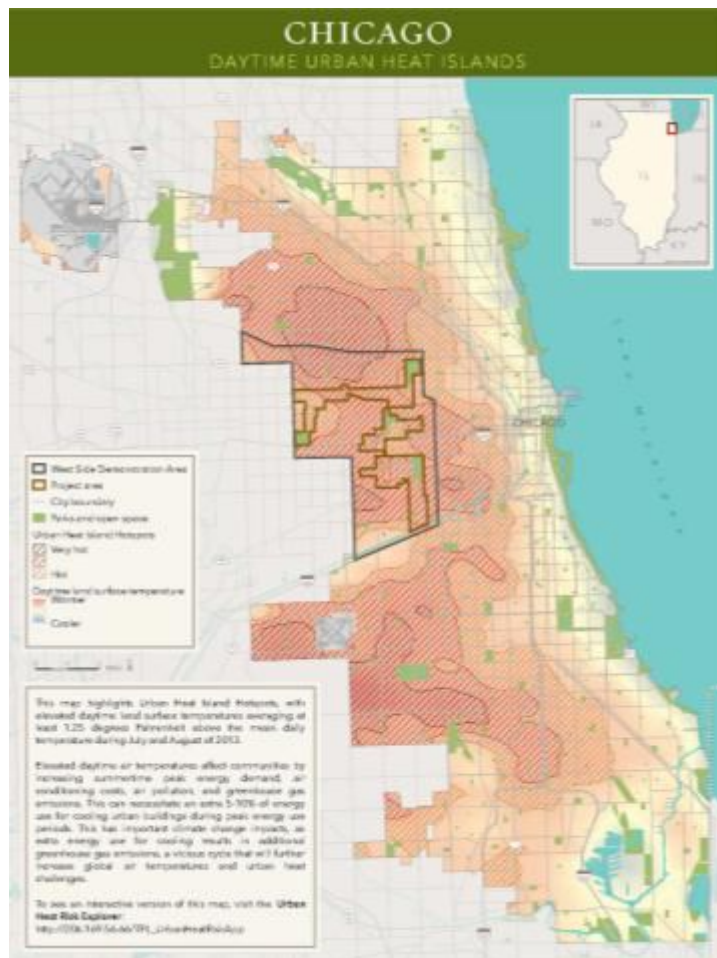


VI. HOW CAN DALLAS USE THIS?

Use Case: Site Selection



Use Case: Making the Case - Chicago



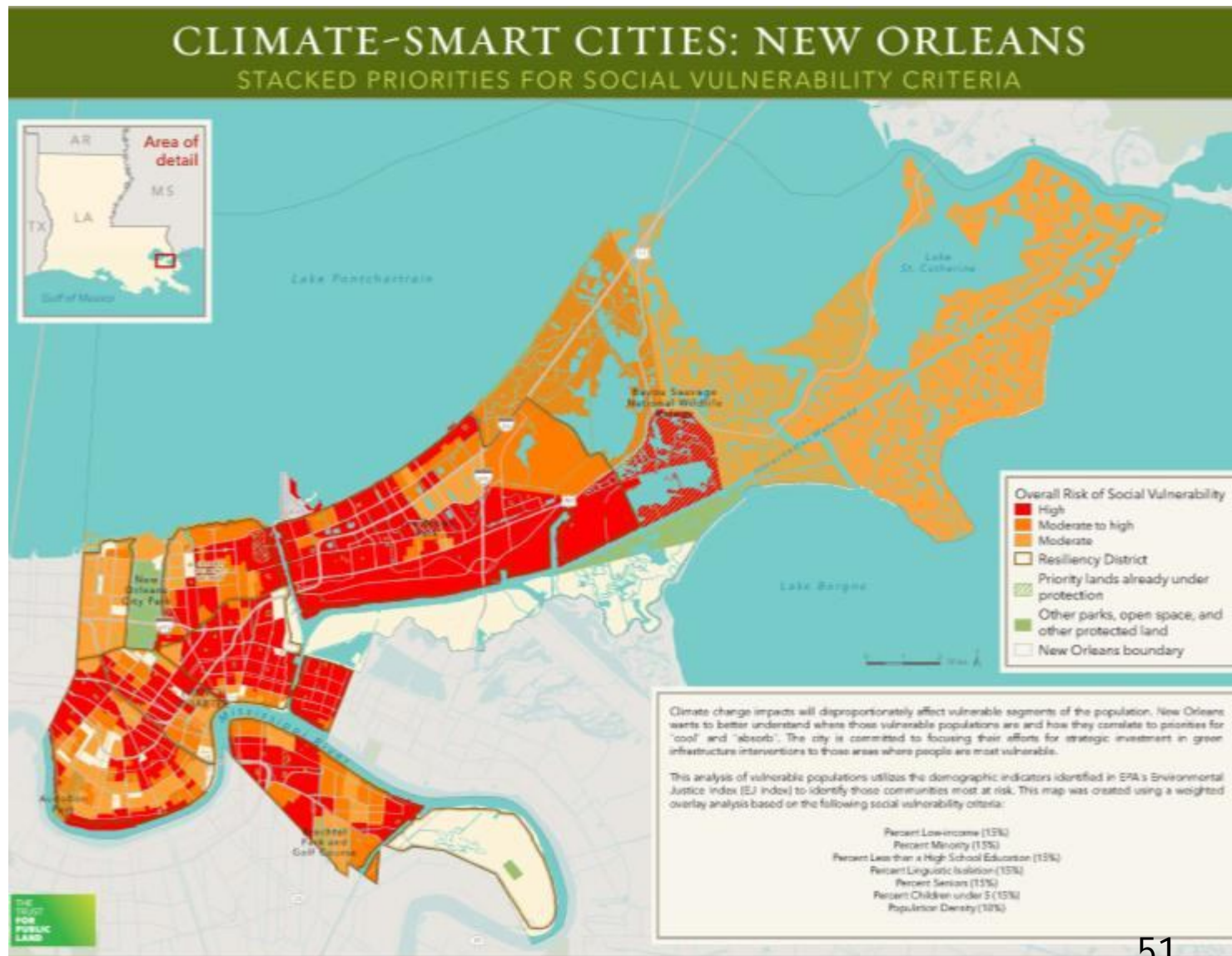
Use Case: Making the Case – New Orleans



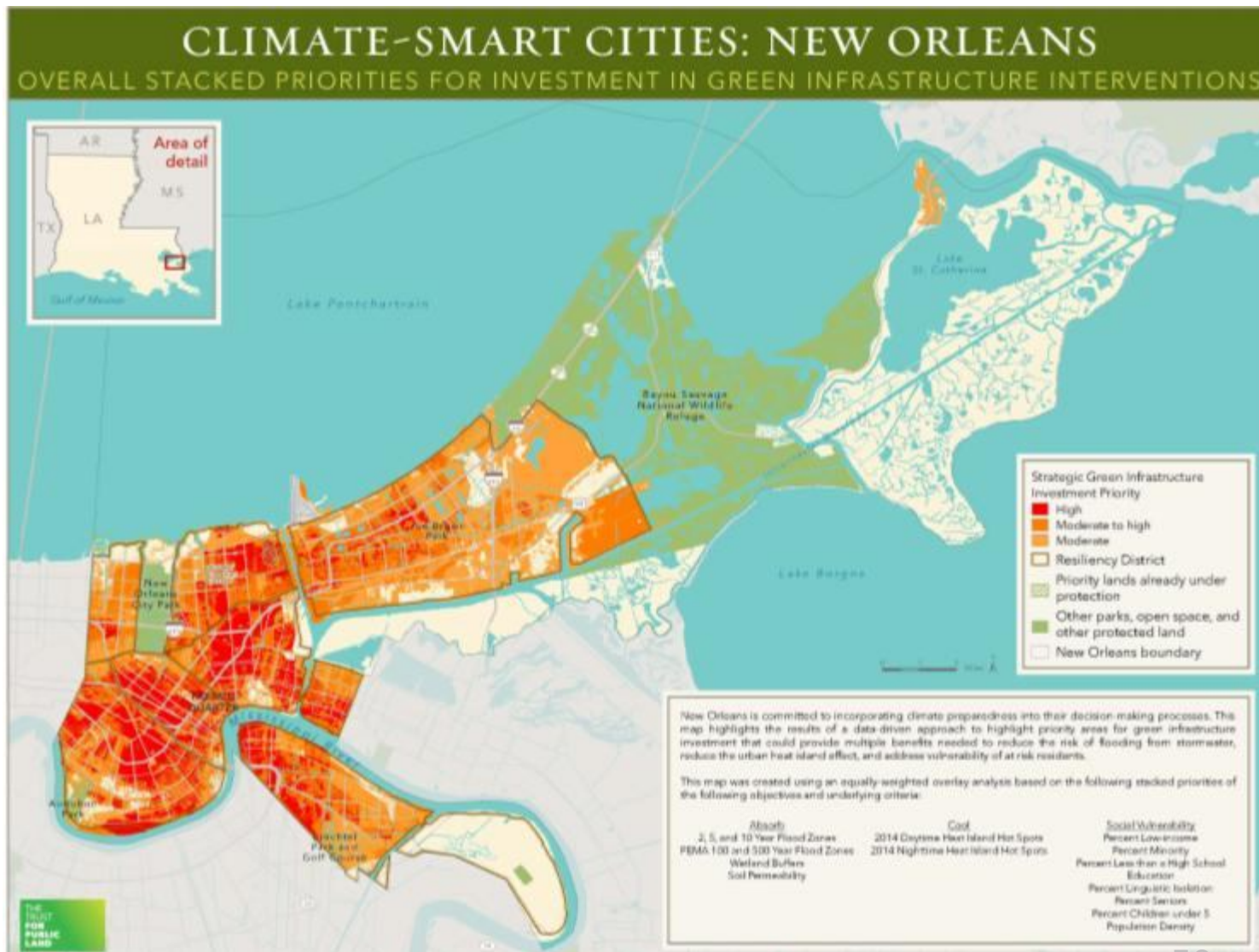
Use Case: Making the Case – New Orleans



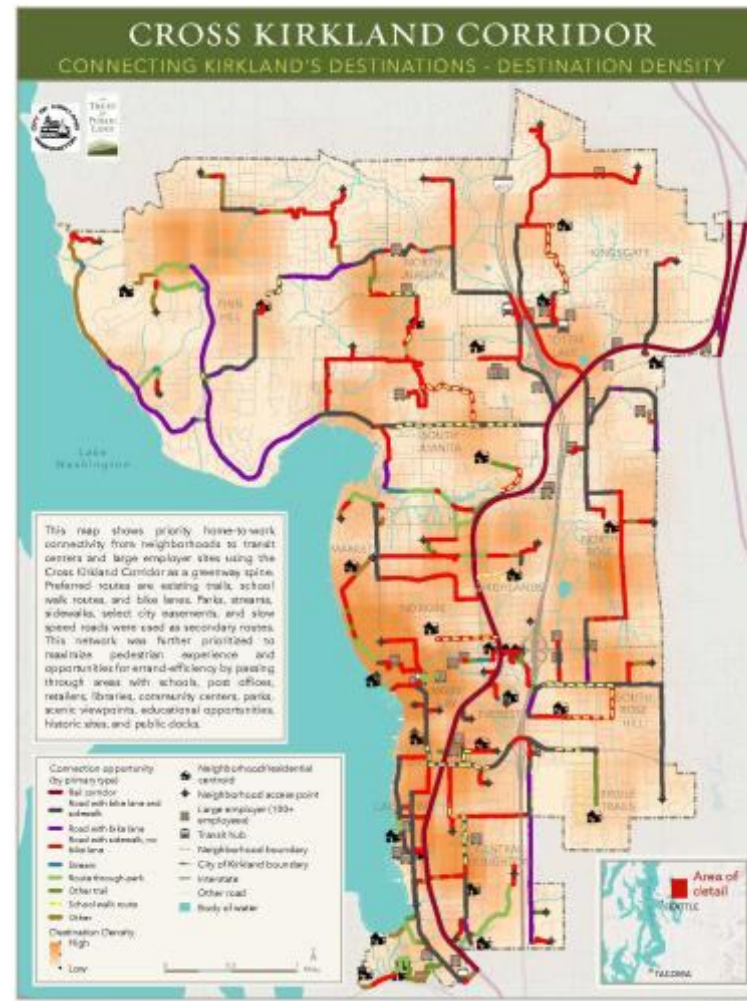
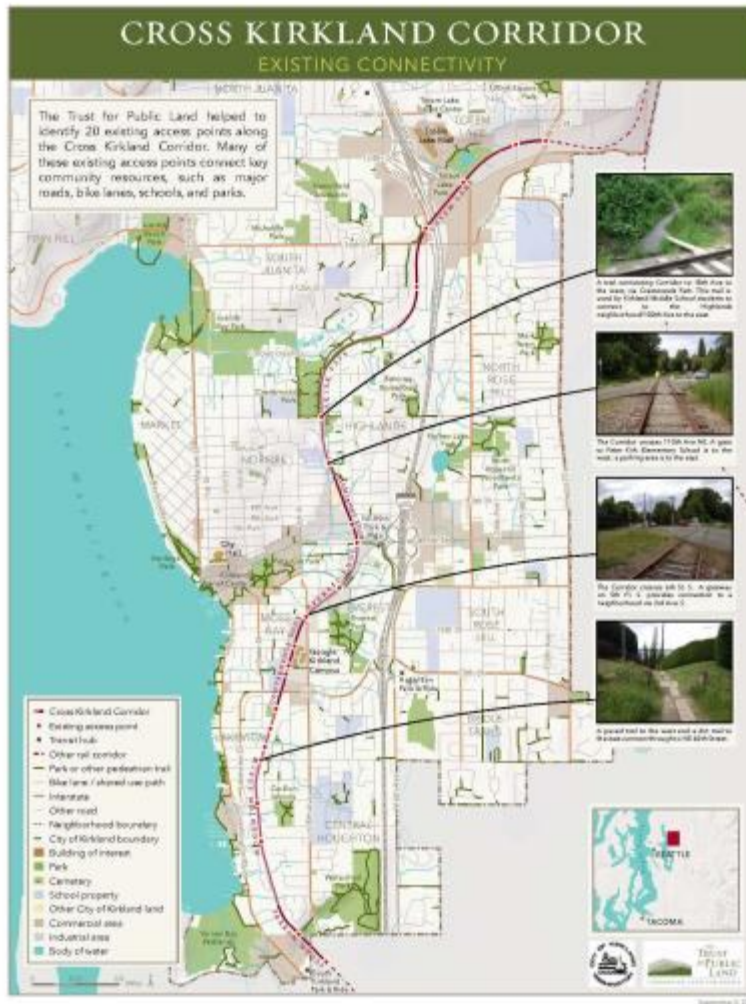
Use Case: Making the Case – New Orleans



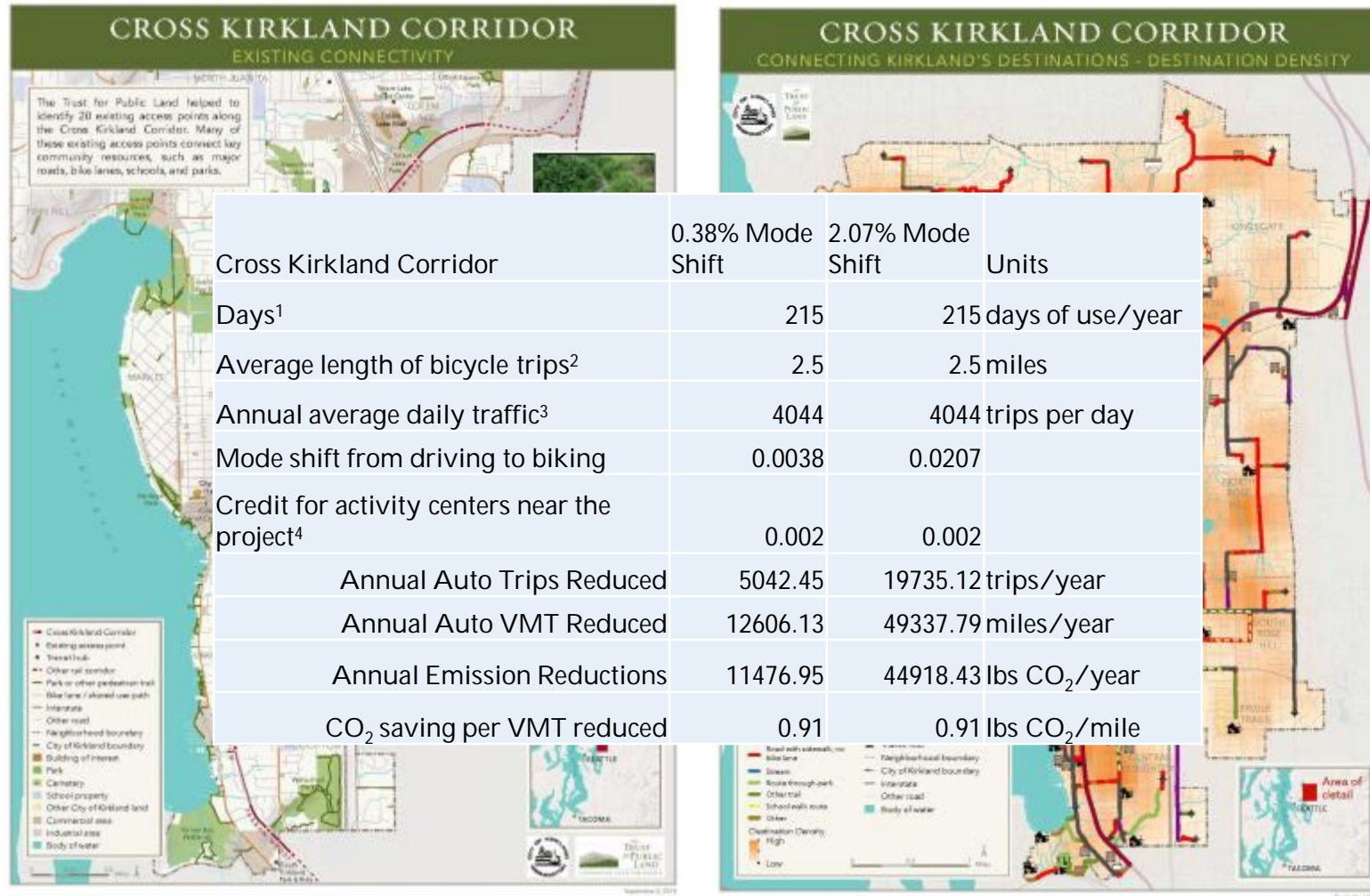
Use Case: Making the Case – New Orleans



Closer Look: Cross Kirkland Corridor Analysis



Closer Look: Cross Kirkland Corridor Analysis



VII. QUESTIONS & DISCUSSION

Contact Us



Robert Kent

*The Trust for Public Land
North Texas Area Director*

e: robert.kent@tpl.org | t: 469-615-5448



Isaac Cohen

buildingcommunityWORKSHOP

e: isaac@bcworkshop.org | t: 214-252-2900



Matt Grubisich

*The Texas Trees Foundation
Operations Director & Urban Forester*

e: matt@texastrees.org | t: 214-953-1184