



Innovative Life Science Solutions™

INCELL CORPORATION, LLC

12734 Cimarron Path, San Antonio, TX 78249

Phone: (210) 877-0100 Fax: (210) 877-0200

Internet: <http://www.incell.com>

www.incellonline.com

E-mail: info@incell.com

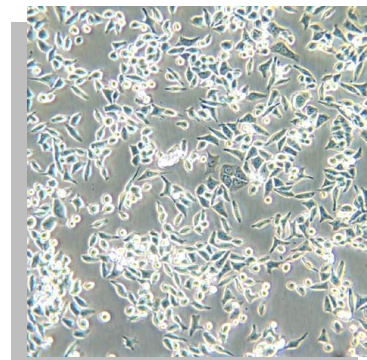
Product Information ©2012

NORMAL-DERIVED COLON MUCOSA (NCM460)

General Description

The NCM460 cell line, which was derived from normal human colon mucosal epithelium, has proved useful in multiple intestinal research areas including infectious disease, cell signaling, cytokine production, vitamin transport, gene regulation, protein expression, and phosphorylation in multiple growth regulatory pathways. NCM460 cells express colonic epithelial cell associated antigens, such as cytokeratins and villin, but are negative for antigens associated with other cell types, such as neural or endothelial cells. Some of the cells are positive for mucin synthesis, as determined by standard staining methods with specialty stains or antibodies, and the population doubling time is about 32-38 hours. NCM460 cells are routinely grown in plastic cell culture monolayer flasks as a mixed monolayer/suspension culture (although monolayer cells predominate, it is important to maintain both cell types). Initial characterization of the derived NCM460 cell line showed that it had normal growth features and was not tumorigenic, but over the long time period it has been in culture it has acquired some transformation-associated characteristics¹.

Phase Contrast Micrograph
NCM460 Cells in Culture



Source

The epithelial cell line was derived from the normal colon mucosa of a 68-year old Hispanic male (Moyer et al., 1996) and selected for *in vitro* growth. It was not infected or transfected with any exogenous genetic information.

Re-Animation of Cells from Cryovials

Pre-warm the appropriate volume of medium for culture. To re-animate cryostored cells, use safe handling practices and thaw cryovial(s) rapidly (<5 min) in a 37°C water bath². For maximum viability, the whole process should be completed within 30 minutes. Wipe down outside of vial with 70% ethanol prior to opening. Gently and aseptically transfer cells to 2 mL warmed culture medium in a 15 mL conical centrifuge tube. Add about 4 mL of additional growth medium, pellet the cells by centrifugation, then add 10 mL fresh, complete growth medium and re-suspend the cells. Transfer the cell suspension to a 75-cm² culture flask and incubate at 37°C in 5% CO₂ and air.

Propagation Conditions

Growth media. NCM460 cells have fastidious growth requirements and must be maintained in INCELL's enriched **M3:10™ medium (M310A)**; which is M3 Base medium plus supplements and 10% [v/v] fetal bovine serum [FBS], and contains antibiotics; OR **M310F**; which is free of antibiotics) for long-term *in vitro* culture maintenance.

An alternative to purchasing M3:10™ is to supplement **M3Base™** with 10% FBS, since M3Base™ contains all the other needed growth supplements. M3Base™ can be purchased with antibiotics (**Cat #M300A**) or without antibiotics (**Cat #M300F**), but if used to culture NCM460 cells it must be supplemented with high quality, cell culture tested 10% v/v FBS (antibiotics may be optionally added to **M300F** medium). M3Base™ is recommended for international

¹ Initial characterization showed that NCM460 cells did not grow in soft agar and were non-tumorigenic (Moyer et al, 1996). Recent studies primarily done by INCELL collaborators have demonstrated that the NCM460 cell line and selected subpopulations have variable ability to grow in soft agar, display an abnormal karyotype and may be tumorigenic. The exact conditions and cell densities used in these assays are inconsistent between research groups. However, our current interpretation is that as a result of *in vitro* selection, the cell line expresses a transformed phenotype but retains many functional aspects of normal epithelial colon cells. Individual researchers should assess this information and experimental data for suitability of use in their individual studies or applications.

² SAFETY PRECAUTION: Wear gloves and eye protection when thawing cells. Never put vials into liquid nitrogen in the liquid phase as that will compromise the integrity of the vials and they may explode when thawed.

customers and collaborators because INCELL does not ship FBS-containing media overseas. Media are supplied as 100 mL, 500 mL and as custom volumes or packaging (with a 3-4 week lead time).

Other growth conditions. Temperature: 37°C; Gas and environment: 95% air, 5% CO₂; humidified.

Subculturing

Do not let the cells overgrow for long periods or the tight clusters of cells in suspension may be difficult to dissociate. The monolayers can be easily subcultured after removal with standard dissociating agents, such as trypsin:EDTA (T:E)³ or similar solutions. Keep the suspension cells and at least 25% of the spent medium (it contains undefined paracrine factors) upon subculturing.

Procedure. Plan the subculturing split ratio to new flasks or plates, etc. and the volume of spent medium to be retained (i.e., at least 25% of the final media volume). Rock the culture flask gently to release weakly adherent cells into the medium. Aseptically remove all of the spent culture medium (it contains cells in suspension) and transfer to a centrifuge tube. Gently pre-rinse the monolayer with a divalent cation-free buffer such as calcium and magnesium free phosphate buffered saline or with an isotonic saline solution. Save the rinses in another centrifuge tube. Pellet the cells in the tubes by centrifugation at 500 x g. Remove and discard 50 to 75% of the spent medium volume from the first tube and all of the saline from the second tube. Triturate the cell pellet in the spent medium, then transfer to the cell pellet from the rinses, then triturate to re-suspend the pooled cells in the spent medium.

Add 2 ml T:E to the cell monolayer in a 75-cm² flask and incubate at 37°C for 5-10 min. Tap the flask gently to remove the attached cells. Add complete medium to stop the action of the trypsin. Pool and resuspend all of the cells for counting. Counts can be done electronically (unless there is a lot of clumping) or by using a Hemocytometer with a dye exclusion assay such as Trypan blue (e.g., 0.4% dye; 1-2 minutes then count). Transfer the cells to new culture vessels or plates at split ratios that should not exceed 1:4. Seed at a density of 2 to 8 x 10⁵ cells per 10 to 20 mL complete medium volume in a 75-cm² flask (or a similar proportional cell number to surface area or volume ratio). The culture will increase in density over a period several days, with a somewhat slow population doubling time of 32-38 hrs.

Cryopreservation

Cells can be cryopreserved in INCELL's ready-to-use **CPZ™ (Cat # MCPZF)**, or when mixed in a 1:1 ratio of cells in M3:10™ and **EZ-CPZ™** medium (**Cat # EZCZ**). Use standard methods of slow-freeze (controlled rate freezer or isopropanol containers such as "Mr. Freezy"), and a rapid thaw (37°C water bath) for re-animation. The storage temperature should be below -120°C, preferably in the liquid nitrogen vapor phase.

Biohazard and Infectious Agent Considerations

All human cells should be handled according to International, NIH and CDC guidelines. This cell line was developed from a patient not positive for any known infectious agents, including HIV or hepatitis viruses, B or C. Although the line has not specifically been tested for other human viruses, it is negative for HIV. Bacterial, fungal and mycoplasma tests are negative.

Cell Line Distribution

Cells are distributed by INCELL to investigators either as an ACTIVE collaborative research option established with a Material Transfer Agreement (MTA) or as a Cell Licensing Agreement (CLA). Either form can be requested by email to mtacla@incell.com, or by FAX 210-877-0200.

Some References Using NCM460 Cells Grown in M3™ Media

1. Moyer MP, Stauffer JS, Manzano LA, Tanzer LR, Merriman RL. NCM460, A Normal Human Colon Mucosal Epithelial Cell Line. *In Vitro Cell Dev Biol: Animal* 32:315-317, 1996.
2. Kumar CK, Moyer MP, Dudeja PK, Said HM. A Protein Tyrosine Kinase Regulated, pH-Dependent Carrier-Mediated Uptake System for Folate by Human Normal Colonic Epithelial Cell Line NCM460. *JBC*, 272:6226-6231, 1997.
3. Ferris HA, Carroll RE, Rasenick MM, Benya RV. Constitutive activation of the gastrin-releasing peptide receptor expressed by the nonmalignant human colon epithelial cell line NCM460. *J Clin Invest* 100(10):2530-7, 1997.
4. Ferris HA, Carroll RE, Lorimer DL, Benya RV. Location and characterization of the human GRP receptor expressed by gastrointestinal epithelial cells. *Peptides* 18(5):663-72, 1997.

³ 0.05% trypsin:0.02% disodium ethylene diamine tetracetic acid; final concentrations)

5. Sahi J, Nataraja SG, Layden TJ, Goldstein JL, Moyer MP, Rao MC. Cl-Transport in an Immortalized Human Epithelial Cell Line (NCM460) Derived from the Normal Transverse Colon. *Am. J. Physiol.* 275:C1048-C1057, 1998.
6. Him EC, Zhu Y, Andersen V, Sciaky D, Cao HJ, Meekins H, Smith TJ, Lance P. Cytokine-mediated PGE2 expression in human colonic fibroblasts. *Amer J Physiol* 275(4 Pt 1):C988-94, 1998.
7. Said HM, Ortiz A, McCloud E, Dyer D, Moyer MP, Rubin S. Biotin Uptake by Human Colonic Epithelial NCM460 Cells: A Carrier-Mediated Process Shared with Pantothenic Acid. *Am J Physiol* 275(5 Pt 1):C1365-71, 1998.
8. Backert G, Gelos M, Kobalz U, Hanski ML, Bohm C, Mann B, Lovin N, Gratachev A, Mansmann U, Moyer MP, Riecken EO, Hanski C. Differential gene expression in colon carcinoma cells and tissues detected with a cDNA array. *Intl J Cancer* 82:868-74, 1999.
9. Rah SY, Izbicka E, Lawrence R, Davidson D, Sun D, Moyer MP, Roodman D, Hurley L, Von Hoff D. Effect of telomere and telomerase interactive agents on human tumor and normal cell lines. *Clin Cancer Res* 6:987-993, 2000.
10. McMasters RA, Wilbert TM, Jones KE, Pitlyk K, Saylor RL, Moyer MP, Chambers TC, Drake RR. Two-drug combinations that increase apoptosis and modulate bak and bcl-X(L) expression in human colon tumor cell lines transduced with herpes simplex virus thymidine kinase. *Cancer Gene Therapy* 7:563-573, 2000.
11. Sundaram U. Regulation of intestinal vitamin B(2) absorption. Focus on "Riboflavin uptake by human-derived colonic epithelial NCM460 cells". *Amer J Physiol-Cell Physiol* 278(2):C268-9, 2000.
12. Drake RR, Pitlyk K, McMasters RA, Mercer KE, Young H, Moyer MP. Connexin-independent ganciclovir-mediated killing conferred on bystander effect-resistant cell lines by a herpes simplex virus-thymidine kinase-expressing cell line. *Mol. Ther.* 2:515-523, 2000
13. Nimmrich I, Erdmann S, Melchers U, Finke U, Hentsch S, Moyer MP, Hoffman I, Mueller O. Seven genes that are differentially transcribed in colorectal tumor cell lines. *Cancer Lett.* 160:37-43, 2000.
14. Said HM, Ortiz A, Moyer MP, Yanagawa N. Riboflavin uptake by human-derived colonic epithelial NCM460 cells. *Am J Physiol Cell Physiol* 278:C270-276, 2000.
15. Zhao D, Keates AC, Kuhnt-Moore S, Moyer MP, Kelly CP, Pothoulakis C. Signal transduction pathways mediating neurotensin-stimulated interleukin-8 expression in human colonocytes. *J Biol Chem.* 276(48):44464-71, 2001.
16. Said HM, Ortiz A, Subramanian VS, Neufeld EJ, Moyer MP, Dudeja PK. Mechanism of thiamine uptake by human colonocytes: studies with cultured colonic epithelial cell line NCM460. *Am J Physiol Gastroint Liver Physiol* 281(1):G144-50, 2001.
17. Zhao D, Kuhnt-Moore S, Zeng H, Pan A, Wu JS, Simeonidis S, Moyer MP, Pothoulakis C. Substance P-stimulated interleukin-8 expression in human colonic epithelial cells involves Rho family small GTPases. *Bioch J.* 368:665-72, 2002.
18. Elmore E, Siddiqui S, Desai N, Moyer MP, Steele VE, Redpath JL. The human epithelial cell cytotoxicity assay for determining tissue specific toxicity: method modifications. *Methods Cell Sci.* 24:145-53, 2002.
19. Zhao D, Kuhnt-Moore S, Zeng H, Wu JS, Moyer MP, Pothoulakis C. Neurotensin stimulates interleukin-8 expression in human colonic epithelial cells through Rho GTPase-mediated NF- κ B pathways. *AJP-Cell Phys* 284:C1397-404, 2003.
20. Malik M, Zhao C, Schoene N, Guisti MM, Moyer MP, Magnuson B. Anthocyanin-rich extract from *Aronia Meloncarpa* E induced cell cycle block in colon cancer but not normal colonic cells. *Nutrit. Cancer*, 46:186-196, 2003.
21. Rhee SH, Keates AC, Moyer MP, Pothoulakis C. MEK is a key modulator for TLR5-induced interleukin-8 and MIP3 alpha gene expression in nont-transformed human colonic epithelial cells. *J Biol Chem.* 11:279(24):25179-88, 2004.
22. Huang XW, Lieber A, Tang ZY, Lawrence TS, Moyer MP, Zhang M. Gene expression in intrahepatic tumors through DNA recombination by a replication-activated adenovirus vector. *Cancer Gene Ther.* 11(6):450-456, 2004.
23. Zhao D, Zhan Y, Koon HW, Zeng H, Keates S, Moyer MP, Pothoulakis C. Metalloproteinase-dependent transforming growth factor-alpha release mediates Neurotensin-stimulated MAP kinase activation in human colonic epithelial cells. *J Biol Chem.* 279(42):43547-54, 2004.
24. Koon HW, Zhao D, Na X, Moyer MP, Pothoulakis C. Metalloproteinases and transforming growth factor-alpha mediate substance P-induced mitogen-activated protein kinase activation and proliferation in human colonocytes. *J Biol Chem.* 279(44):45519-27, 2004.
25. Zhao C, Giusti MM, Malik M, Moyer MP, Magnuson BA. Effects of commercial anthocyanin-rich extracts on colonic cancer and nontumorigenic colonic cell growth. *J Agric Food Chem* 52(20):6122-8, 2004.
26. Kim H, Rhee SH, Kokkotou E, Na X, Savidge T, Moyer MP, Pothoulakis C, Lamont JT. Clostridium difficile toxin A regulates inducible COX-2 and PGE2 synthesis in colonocytes via reactive oxygen species and activation of p38 MAPK. *J Biol Chem* 28(22):21237-45, 2005.
27. Zhao D, Zhan Y, Zeng H, Koon HW, Moyer MP, Pothoulakis C. Neurotensin stimulates interleukin-8 expression through modulation of I (kappa) B (alpha) phosphorylation and p65 transcriptional activity: involvement of protein kinase c (alpha). *Mol Pharmacol.* 67(6):2025-31, 2005.
28. Na X, Zhao D, Koon HW, Kim H, Husmark J, Moyer MP, Pothoulakis C, LaMont JT. Clostridium difficile toxin B activates the EGF receptor and the ERK/MAP kinase pathway in human colonocytes. *Gastroenterology* 128(4):1002-11, 2005.
29. Koon HW, Zhao D, Zhan Y, Simeonidis S, Moyer MP, Pothoulakis C. Substance P-stimulated interleukin-8 expression in human colonic epithelial cells involves protein kinase C delta activation. *J Pharmacol Exp Ther* 314(3):1393-400, 2005.
30. Kim H, Kokkotou E, Na X, Rhee SH, Moyer MP, Pothoulakis C, Lamont JT. Clostridium difficile toxin A-induced colonocyte apoptosis involves p53-dependent p21(WAF1/CIP1) induction via p38 mitogen-activated protein kinase. *Gastroenterology* 129(6):1875-88, 2005.
31. Rhee SH, Kim H, Moyer MP, Pothoulakis C. Role of MyD88 in phosphatidylinositol 3-kinase activation by flagellin/toll-like receptor 5 engagement in colonic epithelial cells. *J Biol Chem.* 281(27):18560-8, 2006.
32. Koon HW, Zhao D, Zhan Y, Rhee SH, Moyer MP, Pothoulakis C. Substance P stimulates cyclooxygenase-2 and prostaglandin E2 expression through JAK-STAT activation in human colonic epithelial cells. *J. Imm.* 176(8):5050-9, 2006.
33. Chen X, Kokkotou EG, Mustafa N, Bhaskar KR, Sougioultzis S, O'Brien M, Pothoulakis C, Kelly CP. Saccharomyces boulardii inhibits ERK1/2 mitogen-activated protein kinase activation both in vitro and in vivo and protects against Clostridium difficile toxin A-induced enteritis. *J Biol Chem.* 281(34):24449-54, 2006.

34. Zhao D, Zhan Y, Zeng H, Moyer MP, Mantzoros CS, Pothoulakis C. Ghrelin stimulates interleukin-8 gene expression through protein kinase C-mediated NF-kappaB pathway in human colonic epithelial cells. *J Cell Biochem*. 97:1317-27, 2006.
35. Chiu TT, Leung WY, Moyer MP, Strieter RM, Rozengurt E. Protein kinase D2 mediates lysophosphatidic acid-induced interleukin 8 production in nontransformed human colonic epithelial cells through NF-kappaB. *Am J Physiol Cell Physiol*. 292(2):C767-77, 2007.
36. Planoutis K, Plonoutene M, Moyer MP, Milovanovic T, Holcombe RF. Regulation of norrin receptor frizzled-4 by Wnt2 in colon derived cells. *BMC Cell Biol* 8(1):12, 2007.
37. Koon HW, Zhao D, Zhan Y, Moyer MP, Pothoulakis C. Substance P mediates antiapoptotic responses in human colonocytes by Akt activation. *Proc Natl Acad Sci USA* 104(6):2013-8, 2007.
38. Zhao D, Zhan Y, Zeng H, Koon HW, Moyer MP, Pothoulakis C. Neurotensin stimulates expression of early growth response gene-1 and EGF receptor through MAP kinase activation in human colonic epithelial cells. *Int J Cancer* 120(8):1652-6, 2007.
39. Minoo P, Moyer MP, Jass JR. Role of BRAF-V600E in the serrated pathway of colorectal tumorigenesis. *J Pathol*. 212(2):124-33, 2007.
40. Crott JW, Liu Z, Keyes MK, Choi SW, Jang H, Moyer MP, Mason JB. Moderate folate depletion modulates the expression of selected genes involved in cell cycle, intracellular signaling and folate uptake in human colonic epithelial cell lines. *J Nutr Biochem*. Aug 1, 2007.
41. Lea MA, Ibeh C, Shah N, Moyer MP. Induction of differentiation of colon cancer cells by combined inhibition of kinases and histone deacetylase. *Anticancer Res*. 2007 Mar-Apr;27(2):741-8, 2007.
42. Moss AC, Anton P, Savidge T, Newman P, Cheifetz AS, Gay J, Paraschos S, Winter MW, Moyer MP, Karalis K, Kokkotou E, Pothoulakis C. Urocortin II mediates pro-inflammatory effects in human colonocytes via corticotropin-releasing hormone receptor 2alpha. *Gut* Sep;56(9):1210-7, 2007. Epub 2007 Apr 5.
43. DeAngelo AB, Jones CP, Moyer MP. Development of normal human colon cell cultures to identify priority unregulated disinfection by-products with a carcinogenic potential. *Water Sci Technol*. 56(12):51-5, 2007.
44. Engelbrecht AM, Mattheyse M, Ellis B, Loos B, Thomas M, Smith R, Peters S, Smith C, Myburgh K. Proanthocyanid from grape seeds inactivates the P13-kinase/PKB pathway and induces apoptosis in a colon cancer cell line. *Cancer Lett* 258(1):144-53, 2007.
45. Kim H, Rhee SH, Pothoulakis C, Lamont JT. Inflammation and apoptosis in *Clostridium difficile* enteritis is mediated by PGE2 up-regulation of Fas ligand. *Gastroenterology*. 133(3):875-886, 2007.
46. Borthakur A, Bhattacharyya S, Dudeja PK, Tobacman JK. Carrageenan induces interleukin-8 production through distinct Bcl10 pathway in normal human colonic epithelial cells. *Am J Physiol-Gastrointest Liver Physiol* 292(3):G829-38, 2007.
47. Reidling JC, Said HM. Regulation of the human biotin transporter hSMVT promoter by KLF-4 and AP-2: confirmation of promoter activity in vivo. *Amer J Physiol-Cell Physiol*. 292(4):C1305-12, 2007.
48. Bhattacharyya S, Borthakur A, Dudeja PK, Tobacman JK. Carrageenan reduces bone morphogenetic protein-4 (BMP4) and activates the Wnt/beta-catenin pathway in normal human colonocytes. *Dig Dis Sci* 52(10):2766-74, 2007.
49. Bhattacharyya S, Borthakur A, Pant N, Dudeja PK, Tobacman JK. Bcl10 mediates LPS-induced activation of NF-kappaB and IL-8 in human intestinal epithelial cells. *Am J Physiol-Gastrointest Liver Physiol* 293(2):G429-37, 2007.
50. Vishnubhotia R, Sun S, Huq J, Bulic M, Ramesh A, Guzman G, Cho M, Glover SC. ROCK-II mediates colon cancer invasion via regulation of MMP-2 and MMP-13 at the site of invadopodia as revealed by multiphoton imaging. *Lab Invest* 87(11):1149-58, 2007.
51. Tansky M, Pothoulakis C, Leeman SE. Functional consequences of alteration of N-linked glycosylation sites on the neurokinin 1 receptor. *PNAS* 104(25):10691-10696, 2007.
52. Zimmermann D, Hartmann M, Moyer MP, Nolte J, Baumbach J. Determination of volatile products of human colon cell line metabolism by GC/MS analysis. *Metabolomics* 31:13-17, 2007.
53. Bhattacharyya S, Borthakur A, Dudeja PK, Tobacman JK. Carrageenan induces cell cycle arrest in human intestinal epithelial cells in vitro. *J Nutr* 135(3):469-75, 2008.
54. Bhattacharyya S, Dudeja PK, Tobacman JK. Lipopolysaccharide activates NF-B by TLR4-Bcl10-dependent and independent pathways in colonic epithelial cells. *Am J Physiol Gastrointest Liver Physiol* 295: G784-G790, 2008.
55. Circu ML, Rodriguez C, Maloney R, Moyer MP, Aw TY. Contribution of mitochondrial GSH transport to matrix GSH status and colonic epithelial cell apoptosis. *Free Radic Biol Med*. 44(5):768-78, 2008.
56. Duthie SJ, Mavrommatis Y, Rucklidge G, Reid M, Duncan G, Moyer MP, Bestwick CS, Pirie IP. The response of normal human colonocytes to folate deficiency in vitro: functional and proteomic analysis. *J. Proteome Res*. 7(8):3254-66, 2008.
57. Crott JW, Liu A, Keyes MK, Choi SW, Jang H, Moyer MP, Mason JB. Moderate folate depletion modulates the expression of selected genes involved in cell cycle, intracellular signaling and folate uptake in human colonic epithelial cell lines. *J Nutr Biochem*. 19(5):328-35, 2008.
58. Koon HW, Zhao D, Xu H, Bowe C, Moss A, Moyer MP, Pothoulakis C. Substance P-mediated expression of the pro-angiogenic factor CCN1 modulates the course of colitis. *Am J Pathol* 173(2):400-10, 2008. PMID: PMC2475777.
59. Papazyan R, Doche M, Waldron RT, Rozengurt E, Moyer MP, Rey O. Protein kinase D isozymes activation and localization during mitosis. *Exp Cell Res* 314(16):3057-68, 2008.
60. Lea MA, Obeh C, DesBordes C, Vizzotto M, Cosneros-Zevallos L, Byrne DH, Okie WR, Moyer MP. Inhibition of growth and induction of differentiation of colon cancer cells by peach and plum phenolic compounds. *Anticancer Res* 28: 2067-76, 2008.
61. Matos P, Oliveira C, Velho S, Goncalves V, daCosta LT, Moyer MP, Seruca R, Jordan P. B-Raf(V600E) cooperates with alternative spliced Rac1b to sustain colorectal cancer cell survival. *Gastroenterology* 135(3):899-906, 2008.
62. Na X, Kim H, Moyer MP, Pothoulakis C, Lamont JT. Gp96 is a human colonocyte plasma membrane binding protein for *clostridium difficile* toxin A. *Infect Immun* 76(7):2862-71, 2008. PMID: PMC2446715

63. Hope C, Planutkis K, Planutiene M, Moyer MP, Johal KS, Woo J, Santoso C, Hanson JA, Holcombe RF. Low concentrations of resveratrol inhibit Wnt signal throughput in colon-derived cells: implications for colon cancer prevention. *Mol Nutr Food Res* 52 Suppl 1:S52-61, 2008. PMID: PMC2519107
64. Wright KL, Robertson DA, Moyer MP, Ward SG. Long term cannabinoid receptor (CB1) blockade in obesity: implications for the development of colorectal cancer. *Int J. Cancer* 122(8):1920-1, 2008.
65. Circu ML, Stringer S, Rhoads CA, Moyer MP, Aw TY. The role of GSH efflux in staurosporine-induced apoptosis in colonic epithelial cells. *Biochem Pharmacol* 77(1):76-85, 2009.
66. Lefkimmiatis K, Srikanthan M, Maiellaro I, Moyer MP, Curci S, Hofer AM. Store-operated cyclic AMP signalling mediated by STIM1. *Nat Cell Biol.* 2009 Apr;11(4):433-42. Epub 2009 Mar 15.
67. Li TW, Zhang Q, Oh P, Xia M, Chen H, Bermanian S, Lastra N, Circu M, Moyer MP, Mato JM, Aw TY, Lu SC. S-adenosylmethionine and methylthioadenosine inhibit cellular FLICE inhibitory protein expression and induce apoptosis in colon cells. *Mol. Pharmacol.* 76(1): 192-200, 2009.
68. Arlt A, Bauer I, Schafmeyer C, Tepel J, Muerkoster S, Sebens S, Brosch M, Roder C, Kalthoff H, Hampe J, Moyer MP, Folsch UR, Schafer H. Increased proteasome subunit protein expression and proteasome activity in colon cancer relate to an enhanced activation of nuclear factor E2-related factor 2(Nrf2). *Oncogene* 28:3983-3996, 2009.
69. Lefkimmiatis K, Moyer MP, Curci S, Hofer AM. "cAMP Sponge": a buffer for cyclic adenosine 3', 5'-mono-phosphate. *PLoS ONE* 4 (11):e7649, 2009.
70. Circu ML, Moyer MP, Harrison L, Aw TY. Contribution of glutathione status to oxidant induced mitochondrial DNA damage in colonic epithelial cells. *Free Radical Biol Med* 47(8):1190-1198, 2009.
71. Dibra D, Cutreara JJ, Xia X, Birkenbach MP, Li S. Expression of WSX1 in tumors sensitizes IL27-signaling independent NK cell surveillance. *Cancer Res.* 2009 July 1; 69(13): 5505-5513. doi:10.1158/0008-5472.
72. Benavides MA, Hagen KL, Fang W, Du P, Lin S, Moyer MP, Yang W, Bland KI, Grizzle WE, Bosland MC. Suppression by L-Methionine of Cell Cycle Progression in LNCaP and MCF-7 Cells but not Benign Cells. *Anticanc. Res.* 30:1881-1885, 2010.
73. Chao C, Han X, Ives K, Park J, Kolokoltsov AA, Davey RA, Moyer MP, Hellmich MR. CCK2 receptor expression transforms non-tumorigenic NCM356 colonic epithelial cells into tumor forming cells. *Int J Canc* 126:864-875, 2010.
74. Zhang L, Ren X, Alt E, Bai X, Huang S, Xu Z, Lynch PM, Moyer MP, Wen XF, Wu X. Chemoprevention of colorectal cancer by targeting APC-deficient cells for apoptosis. *Nature* 464(7291):1058-1061, 2010.
75. Payne CM, Crowley-Skillicorn C, Holubec H, Dvorak K, Bernstein C, Moyer MP, Garewal H, Bernstein H. Deoxycholate, an Endogenous Cytotoxin/Genotoxin, Induces the Autophagic Stress-Survival Pathway: Implications for Colon Carcinogenesis. *J. Toxicology* Article ID 785907, 14 pages, 2009.
76. Cammareri P, Scopelliti A, Todaro M, Eterno V, Francescangeli F, Moyer MP, Agrusa A, Dieli F, Zeuner A, Stassi G. Aurora-a is essential for the tumorigenic capacity and chemoresistance of colorectal cancer stem cells. *Cancer Res.* 70 (11):4655-4665, 2010.
77. Zeng, H., Trujillo, O., Moyer, M.P., Botnen, J.H. 2010. Prolonged Sulforaphane Treatment Activates Extracellular-Regulated Kinase 1/2 Signaling in Nontumorigenic Colon Cells but not Colon Cancer Cells. *Journal of Federation of American Societies for Experimental Biology.* 24:928.4. (Abstract)
78. Roy J, Lefkimmiatis K, Moyer MP, Curci S, Hofer AM. The {omega}-3 fatty acid eicosapentaenoic acid elicits cAMP generation in colonic epithelial cells via a "store-operated" mechanism. *Am J Physiol Gastrointest Liver Physiol* 299: G715-G722, 2010. PMID: PMC2950681 [Available on 2011/9/1].
79. Payne CM, Crowley-Skillicorn C, Bernstein C, Holubec H, Moyer MP, Bernstein H. Hydrophobic bile acid-induced micronuclei formation, mitotic perturbations, and decreases in spindle checkpoint proteins: relevance to genomic instability in colon carcinogenesis. *Nutr Cancer.* 62(6):825-40, 2010 Aug.
80. Strillacci A, Griffoni C, Lazzarini G, Valerii MC, Di Molfetta S, Rizzello F, Campieri M, Moyer MP, Tomasi V, Spisni E. Selective cyclooxygenase-2 silencing mediated by engineered E. coli and RNA interference induces anti-tumour effects in human colon cancer cells. *Brit J Cancer.* 103(7):975-86, 2010 Sep 28. PMID: PMC2965869 [Available on 2011/9/28].
81. Rey O, Young SH, Jacamo R, Moyer MP, Rozengurt E. Extracellular calcium sensing receptor stimulation in human colonic epithelial cells induces intracellular calcium oscillations and proliferation inhibition. *J Cell Physiol.* 225(1):73-83, 2010 Oct. PMID: PMC3039886 [Available on 2011/10/1].
82. Ma YL, Zhang P, Wang F, Moyer MP, Yang JJ, Liu ZH, Peng JY, Chen HQ, Zhou YK, Liu WJ, Qin HL. Human embryonic stem cells and metastatic colorectal cancer cells shared the common endogenous human microRNA-26b. *J Cell Mol Med.* 2010 Sep 10. doi: 10.1111/j.1582-4934.2010.01170.x. [Epub ahead of print]
83. Liu ZH, Shen TY, Zhang P, Ma YL, Moyer MP, Qin HL. Protective effects of *Lactobacillus plantarum* against epithelial barrier dysfunction of human colon cell line NCM460. *World J Gastroenterol.* 16(45):5759-65, 2010 Dec 7. PMID: PMC2997994.
84. Zeng H, Trujillo ON, Moyer MP, Botnen JH. Prolonged sulforaphane treatment activates survival signaling in nontumorigenic NCM460 colon cells but apoptotic signaling in tumorigenic HCT116 colon cells. *Nutr Cancer.* 63(2):248-55, 2011.
85. Liu Z, Ma Y, Yang J, Zhang P, Moyer MP, Qin H. Expression of the *Lactobacillus plantarum* surface layer MIMP protein protected NCM460 epithelial cells from enteroinvasive *Escherichia coli* infection. *Cell Physiol Biochem.* 27(1):99-108, 2011. Epub 2011 Feb 11.