



1003 Messenger Lane

Moore, Oklahoma 73160

PROPERTY HIGHLIGHTS

- 1,900 SF Warehouse
- 600 SF Office
- 1 Grade Level Door



TOTAL SF	10,000 SF MOL
VACANT SF	2,500 SF MOL
ZONING	I-1
GENERAL USE	Industrial

www.naisullivangroup.com

NO WARRANTY OR REPRESENTATION, EXPRESS OR IMPLIED, IS MADE AS TO THE ACCURACY OF THE INFORMATION CONTAINED HEREIN, AND THE SAME IS SUBMITTED SUBJECT TO ERRORS, OMISSIONS, CHANGE OF PRICE, RENTAL OR OTHER CONDITIONS, PRIOR SALE, LEASE OR FINANCING, OR WITHDRAWAL WITHOUT NOTICE, AND OF ANY SPECIAL LISTING CONDITIONS IMPOSED BY OUR PRINCIPALS NO WARRANTIES OR REPRESENTATIONS ARE MADE AS TO THE CONDITION OF THE PROPERTY OR ANY HAZARDS CONTAINED THEREIN ARE ANY TO BE IMPLIED.

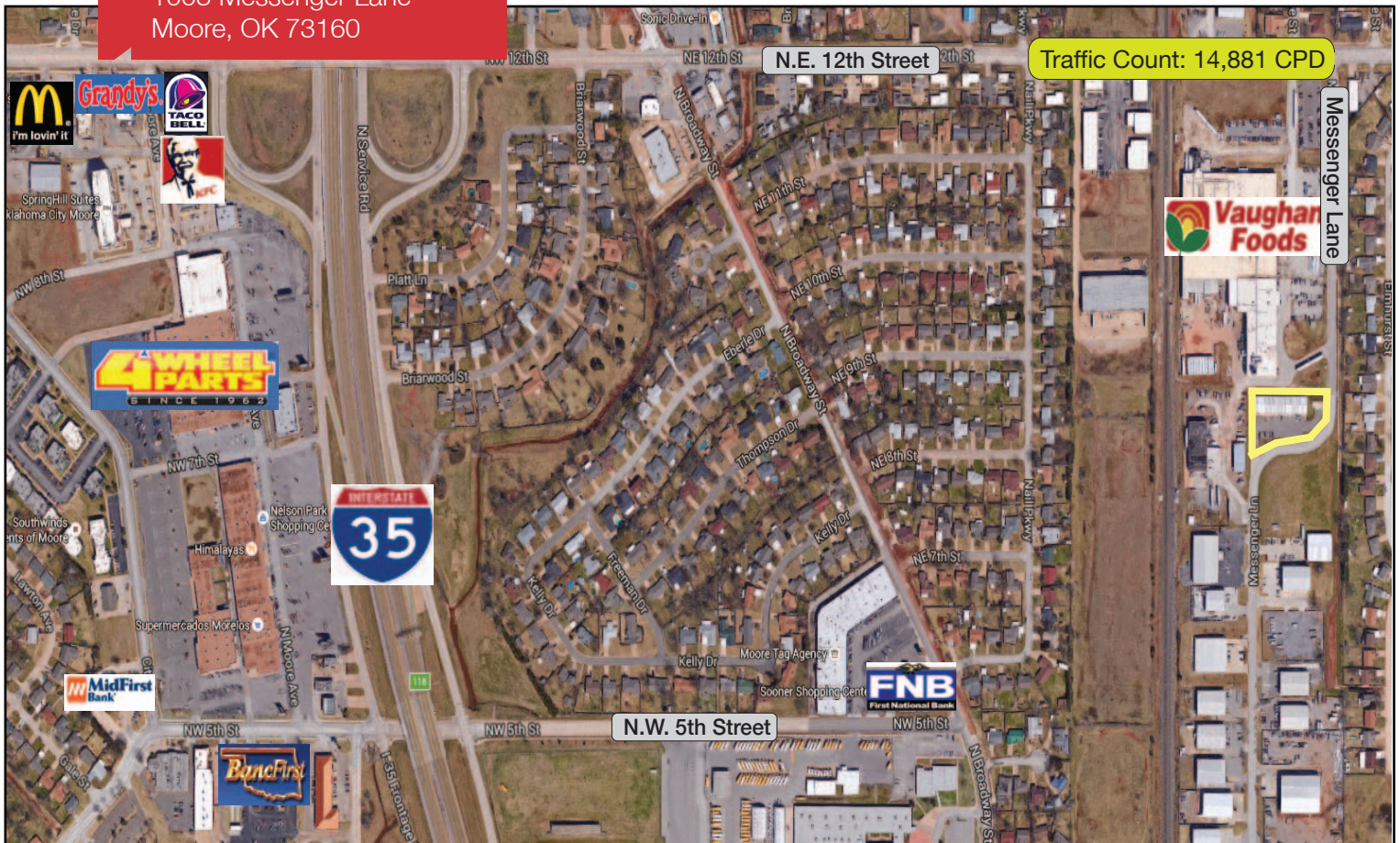
For more information:

Bob Sullivan, CCIM

Cell: 1 405 641 9798
rsullivan@ccim.net

4045 N.W. 64th Street, Suite 340
Oklahoma City, Oklahoma 73116
Office: 1 405 840 0600
Fax: 1 405 840 0610

1003 Messenger Lane
Moore, OK 73160



DEMOGRAPHICS

Population

1 Mile:	3 Mile:	5 Mile:
11,635	73,644	150,392

Average Household Income

1 Mile:	3 Mile:	5 Mile:
\$48,614	\$55,845	\$56,492

Total Households

1 Mile:	3 Mile:	5 Mile:
4,509	28,397	57,657

LOCATION HIGHLIGHTS

- Industrial Area
- Just East of I-35

For more information:

Bob Sullivan, CCIM

Cell: 1 405 641 9798

rsullivan@ccim.net

www.naisullivangroup.com

NAI Sullivan Group

4045 N.W. 64th Street, Suite 340
Oklahoma City, Oklahoma 73116
Office: 1 405 840 0600
Fax: 1 405 840 0610