

Industrial Building For Sale

20,000 SF MOL

3.6 Acres MOL

**PRICE REDUCED!**  
Sales Price: \$135,000



## 207 E. Main Street

Purcell, Oklahoma 73080

### PROPERTY HIGHLIGHTS

- Historic Building across from Rail Station
- Access to I-35 & Highway 77
- Ready for Re-Development
- Investment Priced at \$6.75/SF
- Includes Acreage for Expansion
- 3 Grade Level Doors
- Opportunities for a Wide Range of Business & Redevelopment Ideas



TOTAL SF	20,000 SF MOL
LAND IN ACRES	3.6 MOL
ZONING	Industrial
GENERAL USE	Industrial
2013 TAXES	\$952

[www.naisullivangroup.com](http://www.naisullivangroup.com)

NO WARRANTY OR REPRESENTATION, EXPRESS OR IMPLIED, IS MADE AS TO THE ACCURACY OF THE INFORMATION CONTAINED HEREIN, AND THE SAME IS SUBMITTED SUBJECT TO ERRORS, OMISSIONS, CHANGE OF PRICE, RENTAL OR OTHER CONDITIONS, PRIOR SALE, LEASE OR FINANCING, OR WITHDRAWAL WITHOUT NOTICE, AND OF ANY SPECIAL LISTING CONDITIONS IMPOSED BY OUR PRINCIPALS NO WARRANTIES OR REPRESENTATIONS ARE MADE AS TO THE CONDITION OF THE PROPERTY OR ANY HAZARDS CONTAINED THEREIN ARE ANY TO BE IMPLIED.

For more information:

**Irmon Gray**

**Darryl Meason**

Irmon's Cell: 1 405 474 7286

Darryl's Cell: 1 405 205 9440

irmon@naisullivangroup.com

darryl@naisullivangroup.com

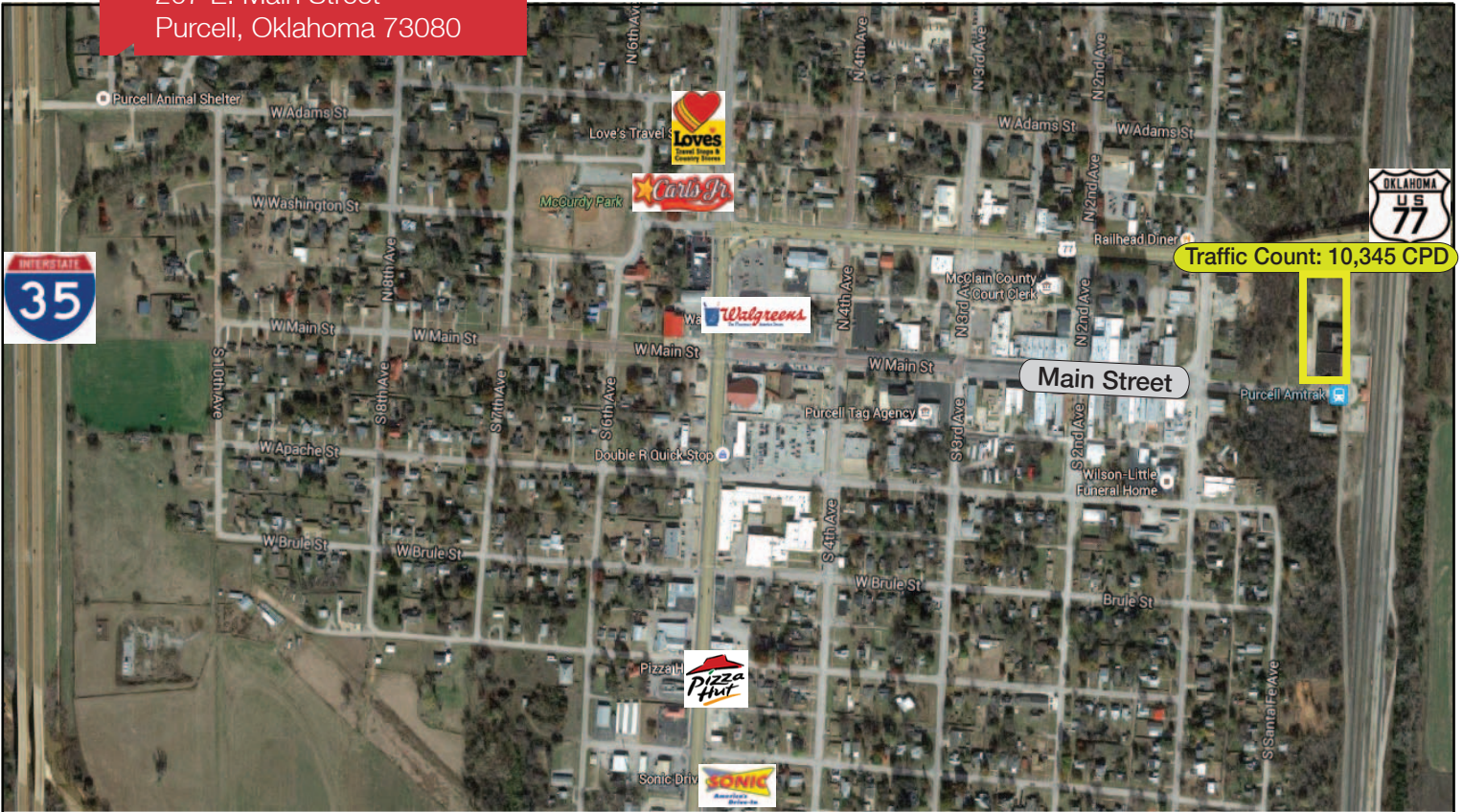
4045 N.W. 64th Street, Suite 340

Oklahoma City, Oklahoma 73116

Office: 1 405 840 0600

Fax: 1 405 840 0610

207 E. Main Street  
Purcell, Oklahoma 73080



## DEMOGRAPHICS

Population		
1 Mile: 3,700	3 Mile: 9,064	5 Mile: 11,422
Average Household Income		
1 Mile: \$47,363	3 Mile: \$45,016	5 Mile: \$45,800
Total Households		
1 Mile: 1,422	3 Mile: 3,403	5 Mile: 4,282

## LOCATION HIGHLIGHTS

- Dimensions: 100' x 200'
- Frontage: 100' on Main Street

For more information:

**Irmon Gray**  
**Darryl Meason**

Irmon's Cell: 1 405 474 7286  
Darryl's Cell: 1 405 205 9440  
irmon@naisullivangroup.com  
darryl@naisullivangroup.com

[www.naisullivangroup.com](http://www.naisullivangroup.com)

4045 N.W. 64th Street, Suite 340  
Oklahoma City, Oklahoma 73116  
Office: 1 405 840 0600  
Fax: 1 405 840 0610

**NAISullivan Group**