

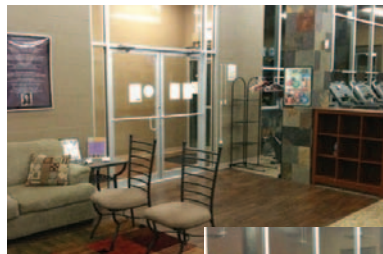


6414 N.W. Cache Road

Lawton, Oklahoma 73505

PROPERTY HIGHLIGHTS

- Bright & Open Space
- Space Being Leased to Anytime Fitness
- Quality Inside & Out
- Reception Area
- Just Remodeled
- Plenty of Parking
- Excellent Location
- Open 24 Hours
- 28,862 Cars Per Day



| | |
|----------|--------------|
| TOTAL SF | 6,000 SF MOL |
|----------|--------------|

| | |
|--------|-----|
| ZONING | I-2 |
|--------|-----|

| | |
|-------|------|
| BUILT | 2007 |
|-------|------|

www.naisullivangroup.com

For more information:

Irmon Gray

Cell: 1 405 474 7286

irmon@naisullivangroup.com

4045 N.W. 64th Street, Suite 340

Oklahoma City, Oklahoma 73116

Office: 1 405 840 0600

Fax: 1 405 840 0610

NO WARRANTY OR REPRESENTATION, EXPRESS OR IMPLIED, IS MADE AS TO THE ACCURACY OF THE INFORMATION CONTAINED HEREIN, AND THE SAME IS SUBMITTED SUBJECT TO ERRORS, OMISSIONS, CHANGE OF PRICE, RENTAL OR OTHER CONDITIONS, PRIOR SALE, LEASE OR FINANCING, OR WITHDRAWAL WITHOUT NOTICE, AND OF ANY SPECIAL LISTING CONDITIONS IMPOSED BY OUR PRINCIPALS NO WARRANTIES OR REPRESENTATIONS ARE MADE AS TO THE CONDITION OF THE PROPERTY OR ANY HAZARDS CONTAINED THEREIN ARE ANY TO BE IMPLIED.

6414 N.W. Cache Road
Lawton, Oklahoma 73505



DEMOGRAPHICS

Population

| | | |
|-------------------|-------------------|-------------------|
| 1 Mile: 12,780 | 3 Mile: 32,075 | 5 Mile: 47,121 |
|-------------------|-------------------|-------------------|

Average Household Income

| | | |
|---------------------|---------------------|---------------------|
| 1 Mile: \$58,914 | 3 Mile: \$59,821 | 5 Mile: \$55,688 |
|---------------------|---------------------|---------------------|

Total Households

| | | |
|------------------|-------------------|-------------------|
| 1 Mile: 5,164 | 3 Mile: 13,022 | 5 Mile: 18,836 |
|------------------|-------------------|-------------------|

LOCATION HIGHLIGHTS

- On Cache Road, a Main Artery of Lawton for Retail & Services
- Close to Major Shopping Area

For more information:

Irmon Gray

Cell: 1 405 474 7286

irmon@naisullivangroup.com

www.naisullivangroup.com

NAI Sullivan Group

4045 N.W. 64th Street, Suite 340
Oklahoma City, Oklahoma 73116
Office: 1 405 840 0600
Fax: 1 405 840 0610