



5705 N.W. 132nd Street

Oklahoma City, Oklahoma 73142

PROPERTY HIGHLIGHTS

- Beautiful Office Building with Very Functional Floor Plan
- High End Finishes Throughout
- 2 Large Executive Offices with Seating Area
- 3 Regular Offices
- Conference Room
- Lobby/Reception Area
- Kitchen
- 2 Restrooms
- Copy Room
- Fully Finished Bonus Room Upstairs Not Included in SF
- 10 Parking Spaces



TOTAL SF	2,520 SF MOL
ZONING	PUD-811
GENERAL USE	Office
PARKING RATIO	3.97/1,000 SF
BUILT	2003
TAXES	\$5,845.54

www.naisullivangroup.com

NO WARRANTY OR REPRESENTATION, EXPRESS OR IMPLIED, IS MADE AS TO THE ACCURACY OF THE INFORMATION CONTAINED HEREIN, AND THE SAME IS SUBMITTED SUBJECT TO ERRORS, OMISSIONS, CHANGE OF PRICE, RENTAL OR OTHER CONDITIONS, PRIOR SALE, LEASE OR FINANCING, OR WITHDRAWAL WITHOUT NOTICE, AND OF ANY SPECIAL LISTING CONDITIONS IMPOSED BY OUR PRINCIPALS NO WARRANTIES OR REPRESENTATIONS ARE MADE AS TO THE CONDITION OF THE PROPERTY OR ANY HAZARDS CONTAINED THEREIN ARE ANY TO BE IMPLIED.

For more information:

Nicole Mayes

Cell: 1 405 209 3992

nicole@naisullivangroup.com

4045 N.W. 64th Street, Suite 340

Oklahoma City, Oklahoma 73116

Office: 1 405 840 0600

Fax: 1 405 840 0610

5705 N.W. 132nd Street
Oklahoma City, OK 73142

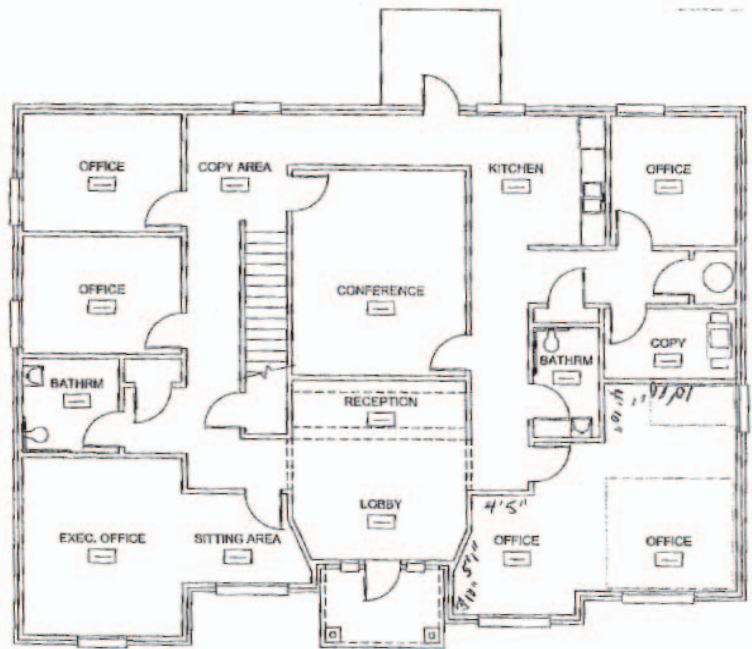


LOCATION HIGHLIGHTS

- Easy Access to Kilpatrick Turnpike
- Well Maintained Office Park
- Near Restaurants & Retails
- Surrounded by Residential Communities

DEMOGRAPHICS

Population		
1 Mile: 7,792	3 Mile: 50,410	5 Mile: 136,819
Average Household Income		
1 Mile: \$68,068	3 Mile: \$74,482	5 Mile: \$59,410
Total Households		
1 Mile: 3,799	3 Mile: 22,192	5 Mile: 60,082



For more information:

Nicole Mayes

Cell: 1 405 209 3992

nicole@naisullivangroup.com

www.naisullivangroup.com

NAI Sullivan Group

4045 N.W. 64th Street, Suite 340
Oklahoma City, Oklahoma 73116
Office: 1 405 840 0600
Fax: 1 405 840 0610