

12700 N. Luther Road

Luther, Oklahoma 73054

PROPERTY HIGHLIGHTS

- 76 Acres MOL with Option to Buy Barn & House on 4 Acres for \$50,000 once Seller no Longer needs it
- Pond
- Fenced
- No Mineral Rights Sold with Transaction
- 2.5 Miles North of New East Bypass at Britton Road
- 3 Miles South of Turnpike Interchange

LAND IN ACRES	76 ACRES MOL
ZONING	Agricultural
GENERAL USE	Agricultural

www.naisullivangroup.com

Bob Sullivan, CCIM

Cell: 1 405 641 9798

rsullivan@ccim.net

4045 N.W. 64th Street, Suite 340

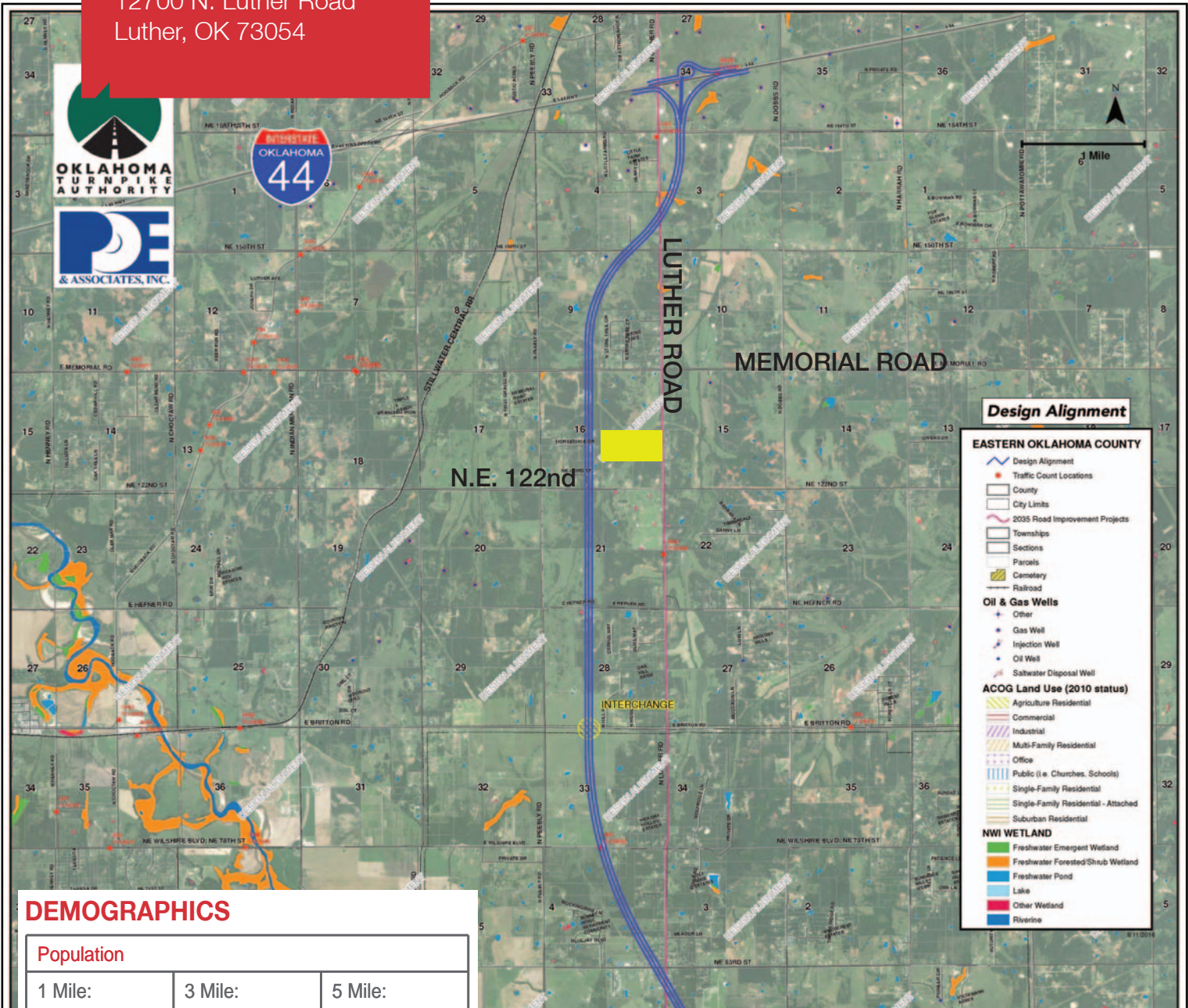
Oklahoma City, Oklahoma 73116

Office: 1 405 840 0600

Fax: 1 405 840 0610

NO WARRANTY OR REPRESENTATION, EXPRESS OR IMPLIED, IS MADE AS TO THE ACCURACY OF THE INFORMATION CONTAINED HEREIN, AND THE SAME IS SUBMITTED SUBJECT TO ERRORS, OMISSIONS, CHANGE OF PRICE, RENTAL OR OTHER CONDITIONS, PRIOR SALE, LEASE OR FINANCING, OR WITHDRAWAL WITHOUT NOTICE, AND OF ANY SPECIAL LISTING CONDITIONS IMPOSED BY OUR PRINCIPALS NO WARRANTIES OR REPRESENTATIONS ARE MADE AS TO THE CONDITION OF THE PROPERTY OR ANY HAZARDS CONTAINED THEREIN ARE ANY TO BE IMPLIED.

12700 N. Luther Road
Luther, OK 73054



DEMOGRAPHICS

Population		
1 Mile: 222	3 Mile: 1,902	5 Mile: 6,322
Average Household Income		
1 Mile: \$78,088	3 Mile: \$81,018	5 Mile: \$69,963
Total Households		
1 Mile: 82	3 Mile: 706	5 Mile: 2,328

Bob Sullivan, CCIM

Cell: 1 405 641 9798

rsullivan@ccim.net

www.naisullivangroup.com

4045 N.W. 64th Street, Suite 340
Oklahoma City, Oklahoma 73116
Office: 1 405 840 0600
Fax: 1 405 840 0610

NAISullivan Group