



## Velma Mobile Home Park 1512 E. First

Velma, Oklahoma 73491

### PROPERTY HIGHLIGHTS

- (27) Space Mobile Home Park
- 5 Acres MOL
- Close to 3 Recreational Lakes
- Area Wide Oil & Gas Activity means a Steady Demand for Affordable Housing
- Street Lights & Fire Hydrants
- New Gravel Road & Mix Gravel & Cement Pads
- Sites have City Utilities with Individual Meters
- Great Upside Potential for the Resourceful Investor



TOTAL ACRES	5 ACRES MOL
ZONING	Commercial
2014 TAXES	\$672

[www.naisullivangroup.com](http://www.naisullivangroup.com)

NO WARRANTY OR REPRESENTATION, EXPRESS OR IMPLIED, IS MADE AS TO THE ACCURACY OF THE INFORMATION CONTAINED HEREIN, AND THE SAME IS SUBMITTED SUBJECT TO ERRORS, OMISSIONS, CHANGE OF PRICE, RENTAL OR OTHER CONDITIONS, PRIOR SALE, LEASE OR FINANCING, OR WITHDRAWAL WITHOUT NOTICE, AND OF ANY SPECIAL LISTING CONDITIONS IMPOSED BY OUR PRINCIPALS NO WARRANTIES OR REPRESENTATIONS ARE MADE AS TO THE CONDITION OF THE PROPERTY OR ANY HAZARDS CONTAINED THEREIN ARE ANY TO BE IMPLIED.

For more information:

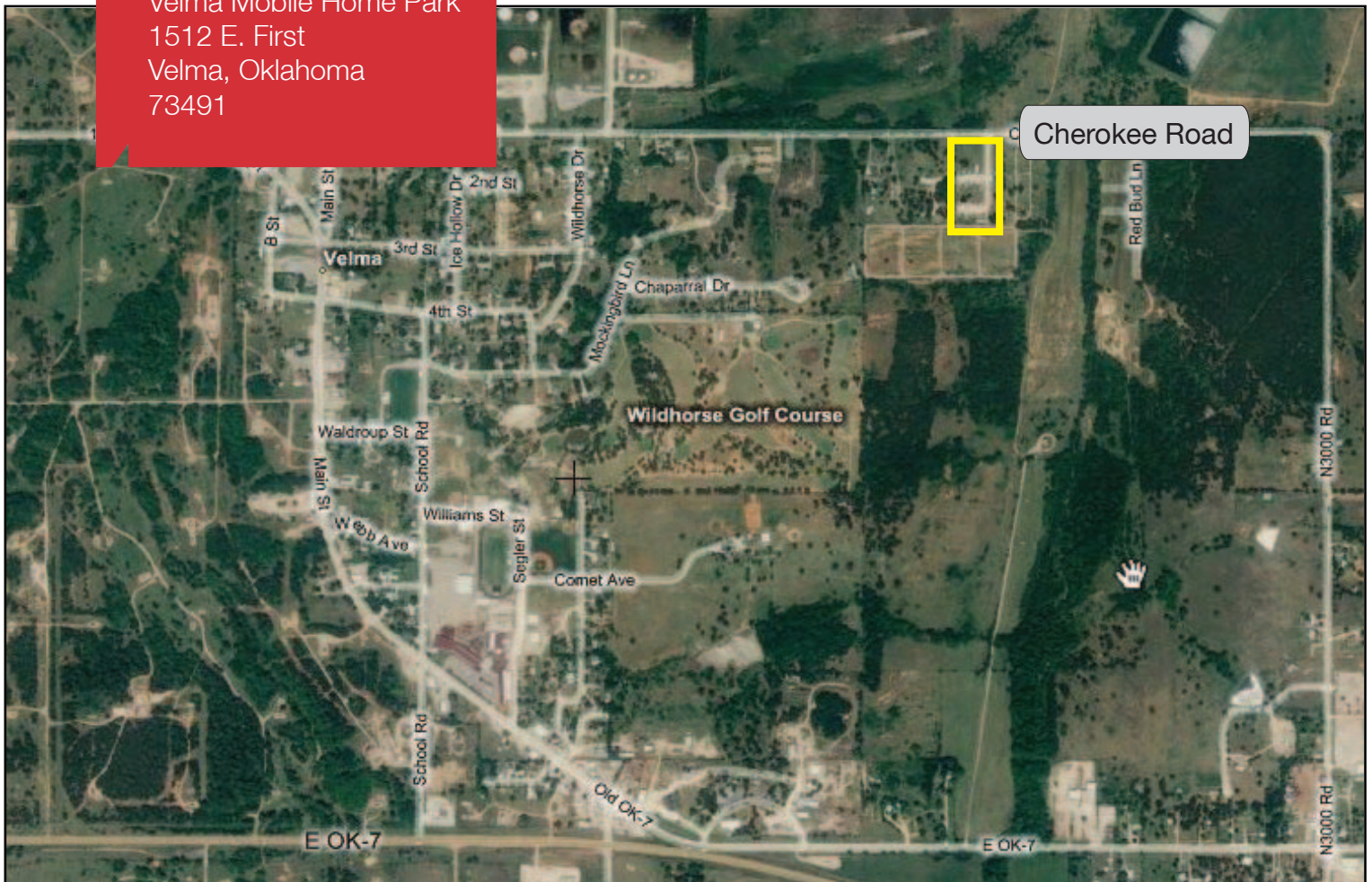
**Darryl Meason**

Cell: 1 405 205 9440

[darryl@naisullivangroup.com](mailto:darryl@naisullivangroup.com)

4045 N.W. 64th Street, Suite 340  
Oklahoma City, Oklahoma 73116  
Office: 1 405 840 0600  
Fax: 1 405 840 0610

Velma Mobile Home Park  
1512 E. First  
Velma, Oklahoma  
73491



## DEMOGRAPHICS

### Population

1 Mile: 570	3 Mile: 982	5 Mile: 1,407
----------------	----------------	------------------

### Average Household Income

1 Mile: \$61,843	3 Mile: \$59,263	5 Mile: \$57,128
---------------------	---------------------	---------------------

### Total Households

1 Mile: 225	3 Mile: 404	5 Mile: 578
----------------	----------------	----------------

## LOCATION HIGHLIGHTS

- 16 Miles East of Duncan, Oklahoma Near Highway 7

For more information:

**Darryl Meason**

Cell: 1 405 205 9440

darryl@naisullivangroup.com

[www.naisullivangroup.com](http://www.naisullivangroup.com)

**NA**Sullivan Group

4045 N.W. 64th Street, Suite 340  
Oklahoma City, Oklahoma 73116  
Office: 1 405 840 0600  
Fax: 1 405 840 0610